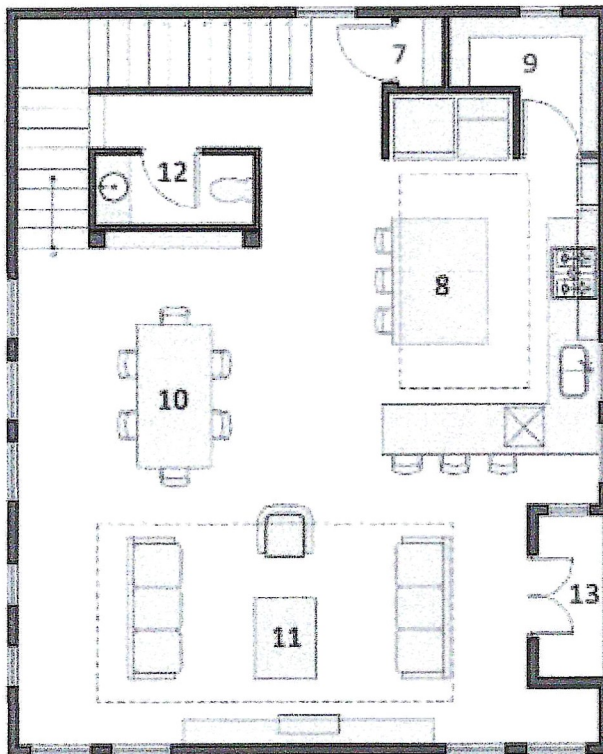
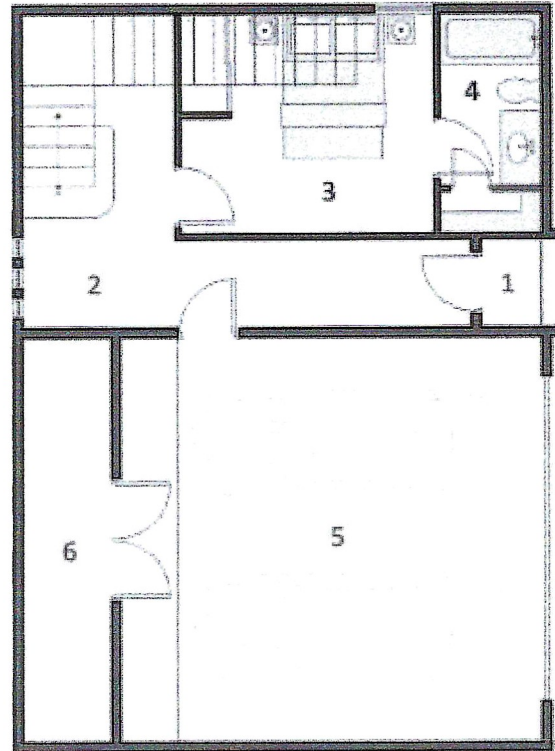


## MODEL B

### FIRST FLOOR

- 1.- Porch
- 2.- Vestibule 8'x5'
- 3.- Bedroom No.1 12'x11'
- 4.- Bathroom No.1 10'x5'
- 5.- 2 Car Garage
- 6.- Storage 20'x4'



### SECOND FLOOR

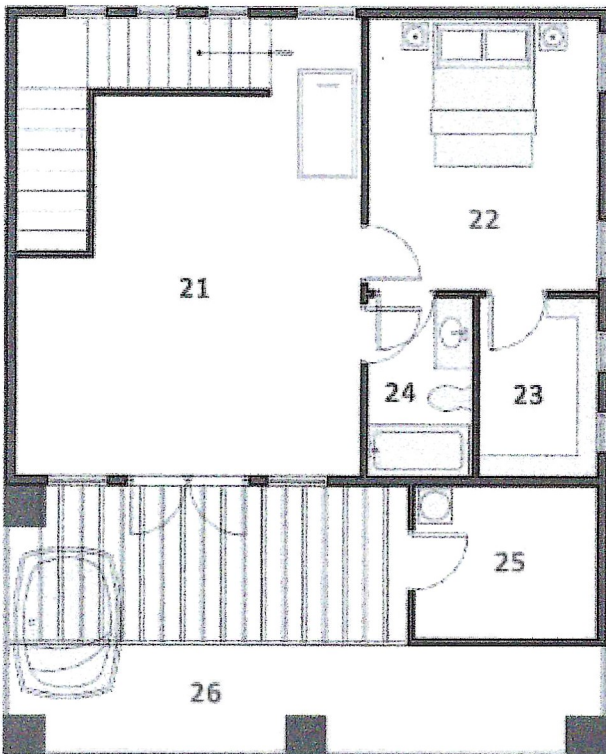
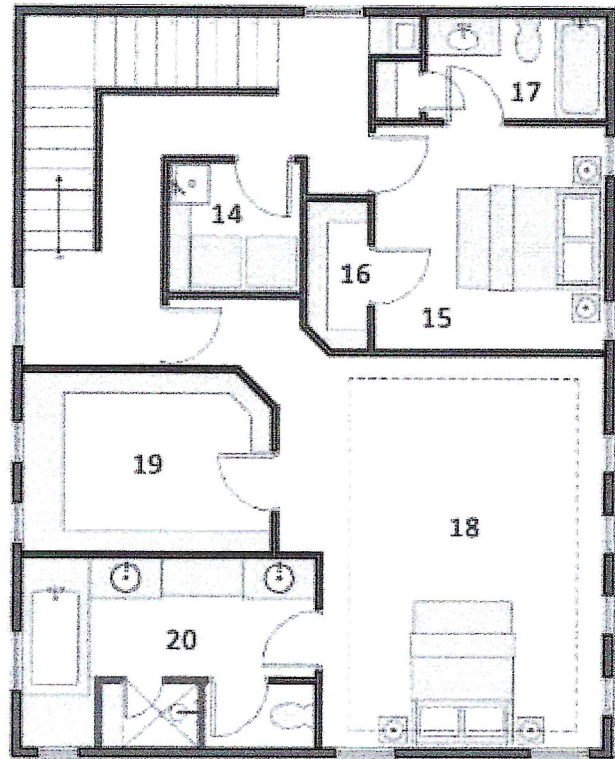
- 7.- Closet 3'x2'
- 8.- Kitchen 20'x10'
- 9.- Pantry 7'x6'
- 10.- Dining 18'x11'
- 11.- Living 25'x12'
- 12.- Powder 7'x3'
- 13.- Balcony 8'x4'





**THIRD FLOOR**

- 14.- Utility 6'x6'
- 15.- Bedroom No.2 12'x11'
- 16.- W.I.C. 7'X3'
- 17.- Bathroom No.2 11'x5'
- 18.- Master Bedroom 19'x16'
- 19.- Master Closet 12'x9'
- 20.- Master Bathroom 14'x9'



**FOURTH FLOOR**

- 21.- Game Room 19'x17'
- 22.- Bedroom No.3 13'x11'
- 23.- W.I.C. 6'X6'
- 24.- Bathroom No.3 8'x5'
- 25.- Mechanical Attic 9'x7'
- 26.- Roof Deck 19'x13'



Prices, plans, dimensions, features, specifications, materials, and availability of homes or communities are subject to change without subject or obligation. Illustrations are artist's depictions only and may differ from completed improvements. Copy Right © 2017 Build My Residence – All Rights Reserved.





## DELANO COURT FEATURES

### EXTERIOR AESTHETICS

- R2 Design Studio® Custom Architecture.
- Stucco and Hardi Panel Exteriors.
- Brick Accents.
- Insulated Patio Doors.
- Eight foot Wood Entry Door.
- Underground Drainage.
- 2- Car Garage with Wood Garage Door.
- Garage door opener with Remotes.
- Architect Designed Landscape Plan.
- Double Insulated Windows (See Plan).

### INTERIOR AESTHETICS

- Wide Plank Oak Floors (See Plan).
- Iron Stair Railing and Spindles (Per Plan).
- Living, Dining, Kitchen, and Master Suite, Living Area Balcony.
- Recessed Panel Interior Doors.
- Staircases with Wood Treads.
- Brushed Nickel & Bronze Door Hardware.
- Gas fireplace with Electric Start.
- 12 ft. & 10 ft. Ceilings (See Plans).
- Architecturally designed Plans, and Professionally assembled Design Schemes.
- Roof Deck with Gas/ Plumbing connections available.
- Smart plugs, outlets, dimmers available.

### MASTER SUITE SPECIFICATIONS

- Kohler® Plumbing Fixtures.
- Glass Encased Shower.
- Double Vanity with Under-mount Sinks.
- Walk-in Closets.

### KITCHEN SPECIFICATIONS

- Quartz Countertops.
- Painted Shaker Style Cabinets.
- Thermador® Gas Cooktop, hood, dishwasher and microwave are standard. Thermador® refrigerator available (upgrade).
- Single Bowl Under-mount Sink.
- Subway Tile Backsplash Standard, multiple upgrade options available.
- American Standard Faucet standard Kohler® faucet available with upgrade.
- LED Under Cabinet Lighting.

### CONSTRUCTION SPECIFICATIONS

- 14+ SEER HVAC unit.
- Engineered Wood Floors.
- Alarm Pre-Wire (1 Key Pad and All Doors).
- RG6 and CAT5 Data Cables.
- Structural Slab.
- StrucSure 1 yr, 2 yr, 10 yr Home Warranty



All specifications and materials are subject to change or substitution of similar quality without notice. Features may vary per plan. Copyright 2017 Cantera Homes – All rights reserved.

# HOMEOWNER CONTACT SHEET & WARRANTY INFORMATION

<b>Neighborhood Management District - East Downtown Management District</b>	7135912014
<b>Delano Court Homeowners Association</b>	<u>281-840-0808</u>
<b>CenterPoint Gas Customer Service(Gas Leaks / Customer Service)</b>	612-372-5050 or 800-296-9815
<b>Centerpoint Electric Customer Service ( Power Outage / Customer Service)</b>	713-207-2222 or 800-332-7143
<b>Pest Control - Home Team</b>  <i>- Home Team Pest Defense</i>	832-478-1300
<b>Alarm and Low Voltage Prewire - Duncan Security &amp; Data Smart Appliances (Thermador) customer service</b>	713-466-4999  1-800-735-4328
<b>Fire Alarm &amp; Sprinkler System - Phoenix Suppression Systems</b>	713-614-8971
<b>Heating &amp; Cooling - Houston Pure Air</b>	832 4057449
<b>Plumbing - Mayorga Plumbing</b>	832-245-1507
<b>Local Fire Station 18</b>	8323946700
<b>Local Police</b>	8323940200
<b>EMERGENCY</b>	911



# AirRenew®



## Indoor Air Quality Drywall

*— installed in bedrooms*



### Good. Clean. Living.

**AirRenew® Indoor Air Quality Drywall** is the first-of-its-kind, patent-pending drywall that actively cleans the air by permanently removing formaldehyde. When airborne formaldehyde comes in contact with the board through normal air circulation, AirRenew drywall captures and converts it into a safe, inert compound, and never releases it back into the air.

### Enjoy a Healthier Living Environment

**Breathe easier** – AirRenew protects your loved ones from potentially harmful VOCs, contributing positively to your home's indoor air quality by permanently removing formaldehyde from the air.

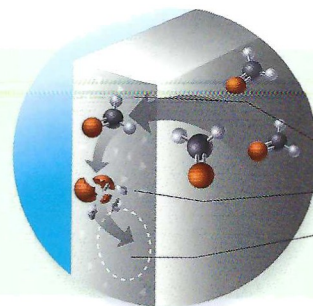
**Improve indoor air quality for generations** – AirRenew will continue to clean your home's air even through paint and wallpaper,\* for up to 75 years based on tests and analysis.

**Add value** – Upgrading to AirRenew for your new home is a smart, long-term investment.

**Protection you can count on** – You get the added confidence of a wall product from CertainTeed, a leading North American manufacturer of building materials.

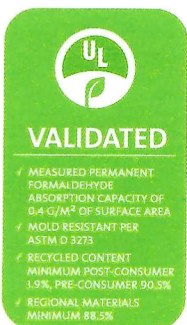
#### Did you know?

Formaldehyde, a volatile organic compound (VOC), can enter a home through products like engineered wood furniture, computers, carpeting, treated fabrics, hair sprays and cleaning materials.\*\* These potentially harmful VOCs can circulate throughout indoor living spaces and affect the air you breathe.



#### How does it work?

1. Captures VOCs
2. Converts VOCs into inert compounds
3. Inert compounds remain safely within the drywall



UL Environment works to advance global sustainability and environmental health. UL Environment Claim Validations are independent proof that environmentally friendly products are exactly what they claim to be.

\* AirRenew works through water-based acrylic and epoxy paints, primers, textures and breathable wallpapers

\*\* According to the U.S. EPA (Details at EPA.gov/iaq/voc.html)



[www.AirRenew.com](http://www.AirRenew.com)  
800-233-8990

**CertainTeed**  
SAINT-GOBAIN

StrucSure Home Warranty provides third-party, insurance-backed new-home warranties to builders across the United States. Those builders then include our warranty protection on the homes they sell to reinforce their commitment to quality and service, build buyer confidence, and offer peace-of-mind to homeowners. Like many types of insurance, the hope is you will never need it, but if a problem emerges, you'll be glad you're covered.

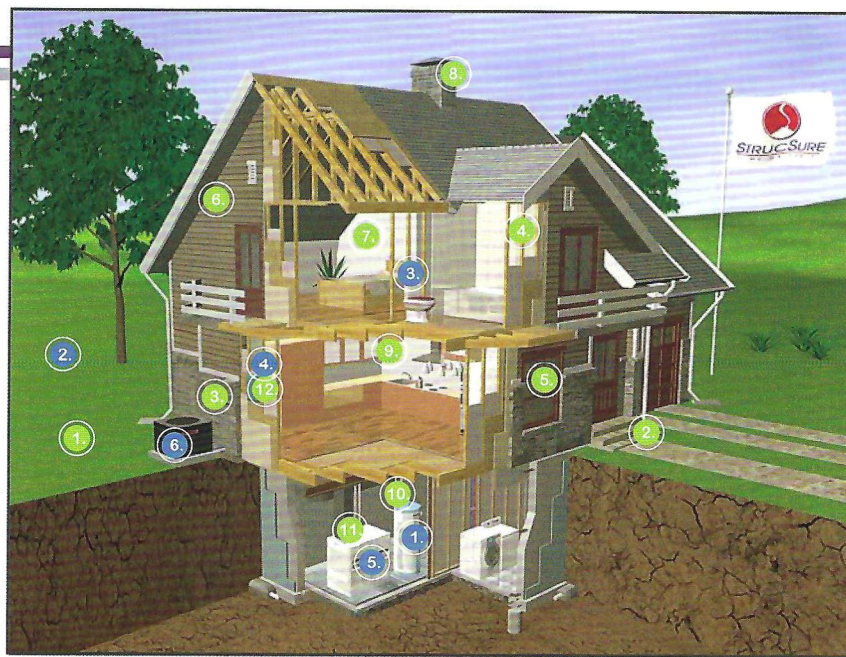
## 1, 2, & 10-YEAR WARRANTY

This multi-part warranty program includes the following components:

- The **one-year warranty** provides surety coverage and backs the builder's warranty on **defects in workmanship and materials**. Covered components of a home that do not meet established Performance Standards during the first year will be repaired, replaced, or paid for under our warranty in the event the builder is unwilling or unable to do so.
- The **two-year warranty** provides surety coverage and backs the builder's warranty on **defects in the wiring, piping, and ductwork in the electrical, plumbing, heating, cooling, ventilating, and mechanical systems**. Covered components of a home that do not meet the established Performance Standards during the first two years will be repaired, replaced, or paid for under our warranty in the event the builder is unwilling or unable to do so.
- The **10-year structural warranty** provides direct coverage from the day of closing for **major structural defects**. If a major structural defect occurs within the 10-year warranty term, it will be repaired, replaced, or paid for by StrucSure Home Warranty.

### COMPONENTS COVERED UNDER THE ONE-YEAR WORKMANSHIP & MATERIALS WARRANTY\*

1. Site work
2. Concrete
3. Masonry
4. Carpentry
5. Doors & windows
6. Siding & roofing
7. Finishes
8. Specialties  
(e.g., fireplaces)
9. Equipment  
(e.g., cabinets)
10. Mechanical systems  
(e.g., plumbing)
11. Heating, air conditioning, & ductwork
12. Electrical systems



### COMPONENTS COVERED UNDER THE TWO-YEAR WIRING, PIPING, AND DUCTWORK WARRANTY\*

1. Water supply system
2. Septic tank system
3. Plumbing
4. Electrical
5. Heating
6. Air conditioning

\*Please reference your Warranty Coverage Booklet for specific terms, conditions, and exclusions.

