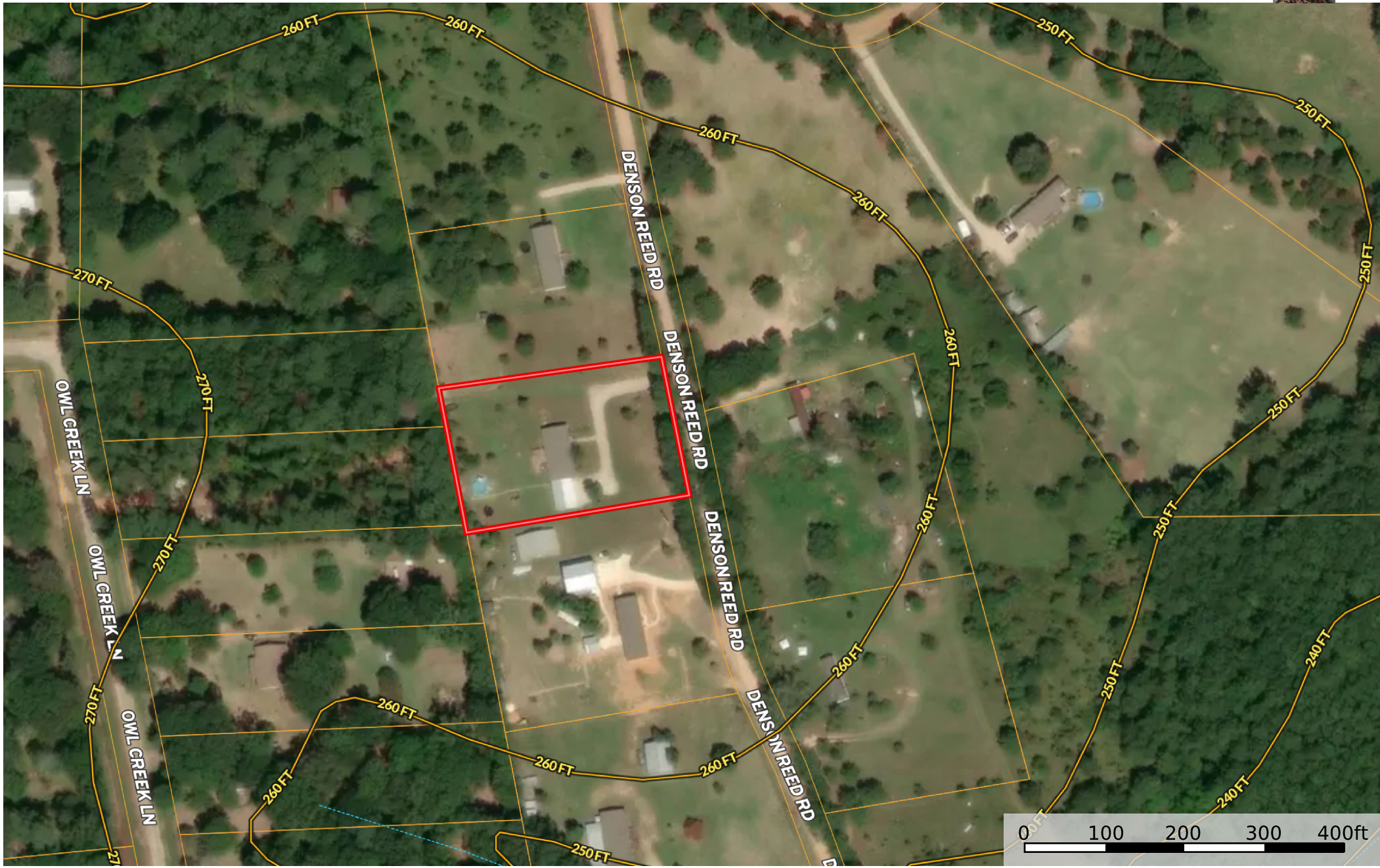


521 Denson Reed Rd.
Texas, AC +/-



Boundary	Stream, Intermittent	River/Creek	Water Body	100 Year Floodplain	500 Year Floodplain	Floodway	Special	Unmapped/ Not Included	Voltage Unavailable	Voltage 0 - 99 KV	Voltage 100 - 161 KV	Voltage 220 - 287 KV	Voltage 345 KV
Voltage 500 KV	Voltage 735 KV+	Crude Oil	Natural Gas	Other									