

**FERGUSON**<sup>®</sup>  
*Bath, Kitchen & Lighting Gallery*



## Showroom Selections

KURK MCGINLEY ENTERPRISES INC  
SANNINO - Specifications

REBECCA ARRINGTON  
16590 I-45 South  
Conroe, TX 77384  
(936) 273-0205 Ext. 8806  
REBECCA.ARRINGTON@FERG

# Table of Contents

Table of Contents	2
Appliances	3
Wolf Rangetop SRT484DG	3
Wolf Wall Mount Range Hood WPW542718	5
Wolf Blower 814423	7
Sub-Zero French Door Refrigerator BI-42UFD/O	8
Wolf Single Electric Wall Oven SO30PM/S/PH	11
Wolf Countertop Microwave MS24	13
Wolf Installation Kit 827870	15
Cove Built-In Dishwasher DW2450	16
Sub-Zero Ice Maker UC-15-IP	18
Kitchen	20
Franke Apron Front / Specialty Kitchen Sink FFHK710-33WH	20
Rohl Disposal Stopper/Flange ISE10082WH	21

### 48" SEALED BURNER RANGETOP - 4 BURNERS AND INFRARED DUAL GRIDDLE



SRT484DG



#### FEATURES

- 4 burners plus 30,000 Btu dual griddle
- Dual-stacked burners go from 20,000 Btu down to a mere breath of flame
- Continuous cast-iron grates for easy movement of pots and pans
- Heavy-gauge stainless steel
- Rigorously tested in our U.S. manufacturing facilities for decades of use
- Exceptional 24/7 support from our Customer Care team in Madison
- Signature red infinite control knobs
- Spark ignition system re-ignites if flame goes out

#### ACCESSORIES

- 2-Burner Wok Grate
- 22" Cutting Board
- Filler Trim
- Griddle Cleaning Pads
- Griddle Cleaning Kit
- Griddle Cleaning Solution
- S-Grates
- Stainless steel, brass or chrome bezels
- High altitude conversion kit
- Signature red, black or stainless steel control knobs
- 5" and 10" stainless steel risers, and 20" riser with shelf

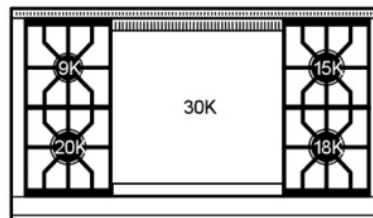
Accessories available through an authorized dealer.  
For local dealer information, visit [subzero-wolf.com/locator](http://subzero-wolf.com/locator).



#### KNOB OPTIONS



#### TOP CONFIGURATION



#### RANGETOP SPECIFICATIONS

- 1 - 9,200 Btu Burner
- 1 - 15,000 Btu Burner
- 1 - 18,000 Btu Burner
- 1 - 20,000 Btu Burner
- 1 - 30,000 Btu (26,000 Btu LP) Double Griddle

Specifications are subject to change without notice. This information was generated on February 22, 2019. Verify specifications prior to finalizing your cabinetry/enclosures.

### 48" SEALED BURNER RANGETOP - 4 BURNERS AND INFRARED DUAL GRIDDLE

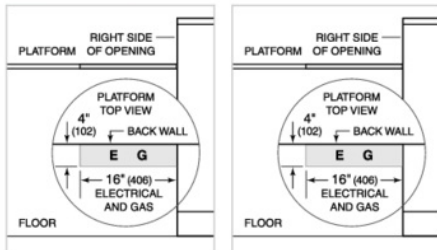


#### PRODUCT SPECIFICATIONS

Model	SRT484DG
Dimensions	47 7/8"W x 8 1/2"H x 28 1/2"D
Weight	280 lbs
Electrical Supply	110/120 VAC, 60 Hz
Electrical Service	15 amp dedicated circuit
Gas Supply	3/4" ID line
Gas Inlet	1/2" NPT female
Receptacle	3-prong grounding-type

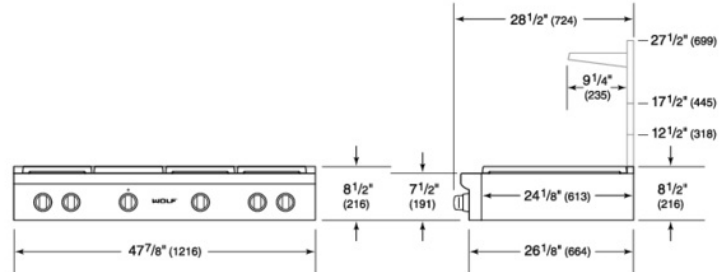
#### ELECTRICAL

#### GAS

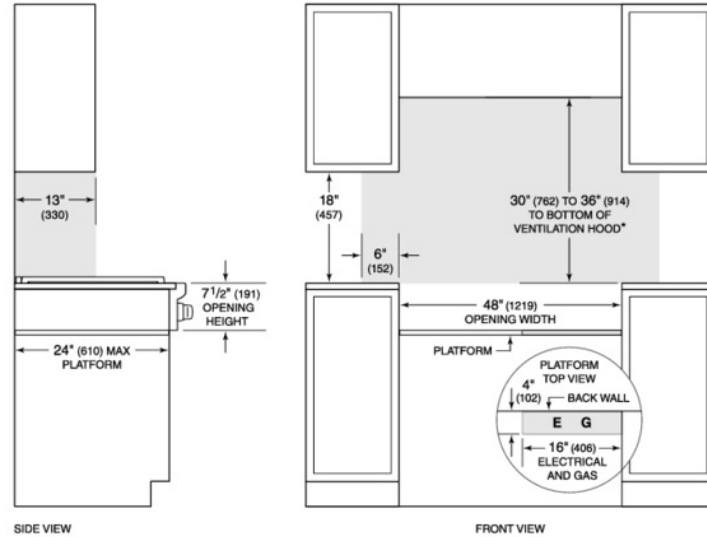


NOTE: Dimensions in parenthesis are in millimeters unless otherwise specified

#### DIMENSIONS



#### STANDARD INSTALLATION



\*Without ventilation hood, 36" (914) minimum clearance countertop to combustible materials, 44" (118) for charbroiler.  
 NOTE: Shaded area above countertop indicates minimum clearance to combustible surfaces, combustible materials cannot be located within this area.  
 Electrical and gas supply located through bottom of platform.  
 For island installation, 12" (305) minimum clearance back of range to combustible rear wall above countertop.

Specifications are subject to change without notice. This information was generated on February 22, 2019. Verify specifications prior to finalizing your cabinetry/enclosures.

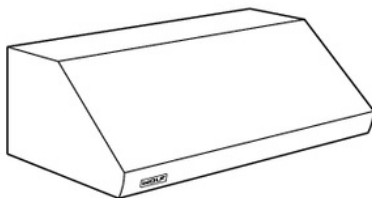
### Pro 27" Deep Wall Hood



wolfappliance.com

#### FEATURES

- Heavy-duty, brushed stainless steel exterior with enclosed liner, available in multiple widths.
- Internal, in-line or remote blower required.
- Welded seams, hemmed edges and hand-finished craftsmanship.
- Recessed easy-access controls.
- Infinite-speed blower control.
- Heat sentry to automatically turn unit on when heat is sensed and adjust blower speed.
- Halogen lighting with two settings.
- Heat lamp receptacles (bulbs not included).
- Removable, dishwasher-safe stainless steel baffle filters.
- Transition with backdraft damper.
- Horizontal discharge with accessory kit.



Model PW482718

MODEL OPTIONS	
30" Width	PW302718
36" Width	PW362718
42" Width	PW422718
48" Width	PW482718
54" Width	PW542718
60" Width	PW602718
66" Width	PW662718

#### ACCESSORIES

- Internal, in-line and remote blowers (refer to chart).
- 38" high stainless steel backsplash with or without warming racks.
- 6", 12", 18", 24" and 30" high stainless steel duct covers.
- Horizontal discharge kit.
- Make-up air damper.

Accessories available through an authorized Wolf dealer. For local dealer information, visit the find a showroom section of our website, wolfappliance.com.

BLOWER OPTIONS	INTERNAL					IN-LINE		REMOTE			
CFM	300*	450*	600	900	1200	600	1100	600	900	1200	1500
PW302718	•	•	•	•	•	•	•	•	•	•	•
PW362718, PW422718	•	•	•	•	•	•	•	•	•	•	•
PW482718, PW542718	•	•	•	•	•	•	•	•	•	•	•
PW602718, PW662718	•	•	•	•	•	•	•	•	•	•	•

\*For make-up air restricted applications.

### Pro 27" Deep Wall Hood

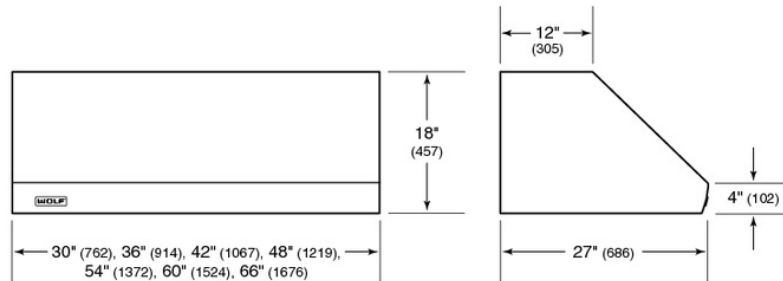


wolfappliance.com

#### SPECIFICATIONS

PRODUCT	
Width	30", 36", 42", 48", 54", 60", 66"
Height	18"
Depth	27"
Weight	69–128 lb
DISCHARGE	
Vertical	10" Round
ELECTRICAL	
Supply	120 VAC, 60 Hz
Service	15 amp circuit
INSTALLATION	
Bottom of Hood to Countertop	30–36"

#### DIMENSIONS

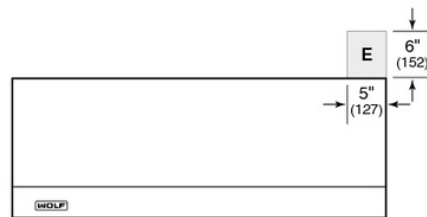


Pro ventilation hoods are sold as a shell only. An internal, in-line or remote blower is required. For blower recommendations, visit our website, [wolfappliance.com](http://wolfappliance.com).

Specifications are subject to change without notice. Visit [wolfappliance.com/specs](http://wolfappliance.com/specs) for the most up-to-date information.

Dimensions may vary  $\pm 1/8"$  (3). Dimensions in parentheses are millimeters unless otherwise specified.

#### ELECTRICAL LOCATION



30" (762) TO 36" (914) BOTTOM EDGE TO COUNTERTOP

### Product Details and Dimensions



### Wolf 814423 Blower



#### Details and Dimensions

CFM	1200 CFM
CEC Approved	Yes
Features	◆ Internal Blower

Fits These Models	PL462212 PI663418 PW662718 PW542418 PW482718 PWC482418 PW542718 PL522212 PW602718 PWC542418 PL582212 PI423418 PI543418 PI363418 PW482418 PW602418
-------------------	--

Disclaimer -- This is not an actual Manufacturer's Specification Sheet. The details and dimensions listed are accurate to the best of our knowledge at the time this document was produced. For an official specification sheet, please contact the manufacturer directly.

### 42" CLASSIC FRENCH DOOR REFRIGERATOR/FREEZER - PANEL READY



BI-42UFD/O



#### FEATURES

Monitor and control remotely with Wi-Fi connectivity

Accepts custom panels for an integrated look within cabinetry or stainless-steel accessory panels and handles to match other Sub-Zero, Wolf, and Cove products

Preserves refrigerated foods with cool, moist air and frozen foods with frigid, dry air

Fight spoilage and odors with a NASA-inspired air purification system

Locks in cold air to ensure freshness with magnetic door seals

Keeps produce fresher with high-humidity, sealed crisper and deli drawers, kept cooler than the rest of the unit

Controls temperature within one degree of setpoint

Filters water and ice, removing contaminants, chlorine taste, and odor

Yields ice automatically and \*max ice\* for additional production

Ensures excellent visibility with bright halogen lights

Refer to freshness cards for tips on food preservation, use, and care

#### ACCESSORIES

42" Stainless Steel Kickplate

90° Door Stop

Air Purification Cartridge

Custom Front Panel Mounting Kit

Custom Side Panel Mounting Kit

Egg Container

Extended Framed Handle Kit

Framed Louvered Grille Insert

Pro Louvered Flush Inset Grille - 84"

Stainless Steel Flush Inset Door Panel with Pro Handle

Stainless Steel Flush Inset Door Panel with Tubular Handle

Stainless Steel Flush Inset Drawer Panel with Pro Handle

Stainless Steel Flush Inset Drawer Panel with Tubular Handle

Stainless Steel Flush Inset Grille Panel

Stainless Steel Side Panel

Water Filter 4204490

White Side Panel

Stainless Steel Pro Handles

Stainless Steel Tubular Handles

Built-In Louvered Grilles

Built-In Overlay or Flush Inset Grille Frames

Accessories are available through an authorized dealer.  
For local dealer information, visit [subzero-wolf.com/locator](http://subzero-wolf.com/locator)



#### HANDLE ACCESSORIES

PRO



TUBULAR



#### PRODUCT DETAILS

##### REFRIGERATOR

- 1 refrigerator storage drawers with adjustable dividers
- 1 high-humidity crisper drawer with adjustable dividers
- 2 adjustable dairy compartments
- 4 glass refrigerator shelves (3 adjustable; 1 stationary)
- 5 refrigerator door bins (3 adjustable; 2 stationary)
- LED refrigerator and freezer lights

##### FREEZER

- 1 full-extension roll-out freezer drawer
- Automatic ice maker with removable ice container

# Appliances

## Sub-Zero French Door Refrigerator BI-42UFD/O (continued)

Specifications are subject to change without notice. This information was generated on March 28, 2019. Verify specifications prior to finalizing your cabinetry/enclosures.

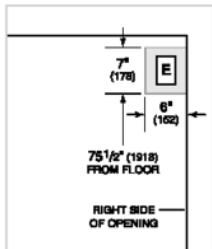
### 42" CLASSIC FRENCH DOOR REFRIGERATOR/FREEZER - PANEL READY



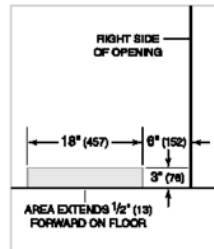
#### PRODUCT SPECIFICATIONS

Model	BI-42UFD/O
Dimensions	42"W x 84"H x 24"D
Door Clearance	22 1/4"
Drawer Clearance	23 5/8"
Weight	582 lbs
Refrigerator Capacity	17.9 cu. ft.
Freezer Capacity	6.3 cu. ft.
Electrical Supply	115 VAC, 60 Hz
Electrical Service	15 amp dedicated circuit
Receptacle	3-prong grounding-type

#### ELECTRICAL



#### PLUMBING



**PANEL SPECIFICATIONS** For complete panels specifications including width/height, weight requirements, thickness requirements and offset details visit [subzero-wolf.com/builtinconfigurator](http://subzero-wolf.com/builtinconfigurator)

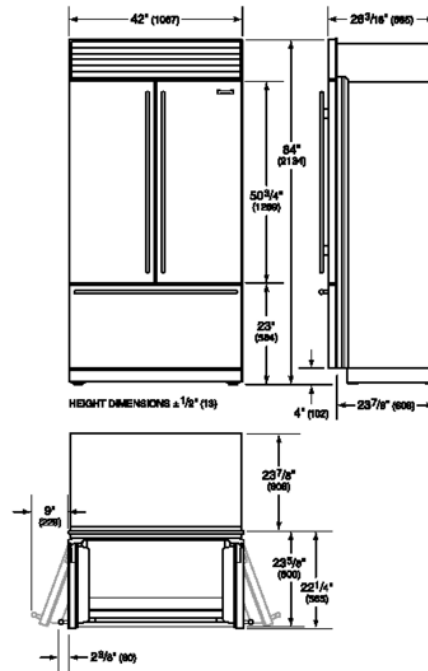
**NOTE:** Dimensions in parenthesis are in millimeters unless otherwise specified

#### INTERIOR VIEW

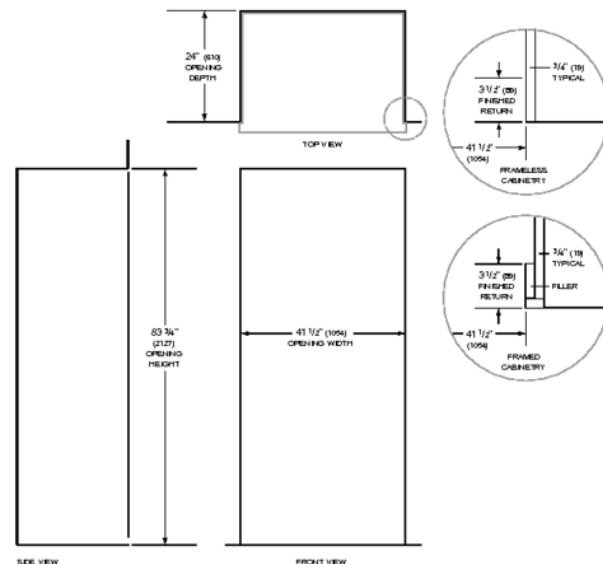


This illustration is intended for interior reference only and may not represent the exterior of the model being specified.

#### DIMENSIONS



#### STANDARD INSTALLATION



**NOTE:** 3 1/2" (89mm) finished returns will be visible and should be finished to match cabinetry. Shaded line represents profile of unit.

Specifications are subject to change without notice. This information was generated on March 28, 2019. Verify specifications prior to finalizing your cabinetry/enclosures.

### 30" M Series Professional Single Oven



wolfappliance.com

#### FEATURES

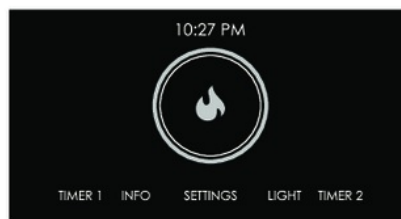
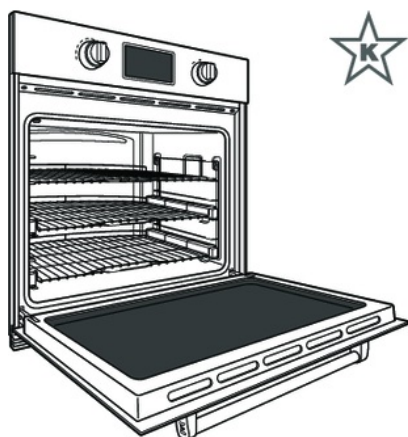
- Advanced Dual VertiCross convection system for faster preheats and consistent cooking across all racks.
- Ten cooking modes for predictably delicious results (convection, roast, bake, broil, convection roast, baking stone, Gourmet, warm, proof and dehydration).
- Gourmet feature has menu of presets that automatically controls cooking of popular meals.
- Interactive color touchscreen for advanced cooking control.
- Heavy-duty stainless steel construction for decades of dependable service.
- Cobalt blue porcelain oven interior.
- Large viewing, triple-pane window and three halogen interior lights.
- Three adjustable oven racks; two full extension and one standard.
- Hidden bake element and recessed broil element.
- Temperature probe and broiler pan.
- Self-clean, delayed start, timed cook and Sabbath features.
- Quiet-close door with spring and damper hinge system.
- Standard or flush installation.
- Pro handle and signature red control knobs.



MODEL	
Professional	SO30PM/S/PH

#### ACCESSORIES

- Signature red, black or stainless steel control knobs.
- Bake stone kit (stone, rack and peel).
- Dehydration kit (racks and door stop).
- Single or set of three standard oven racks.
- Full-extension easy glide oven rack.
- 30" baking sheet.
- Temperature probe and broiler pan.
- Dual installation kit.



Interactive control panel.

Accessories available through an authorized Wolf dealer. For local dealer information, visit the find a showroom section of our website, wolfappliance.com.

Model SO30PM/S/PH

# Appliances

## Wolf Single Electric Wall Oven SO30PM/S/PH (continued)

### 30" M Series Professional Single Oven



wolfappliance.com

#### SPECIFICATIONS

##### PRODUCT

Dimensions 29<sup>7</sup>/<sub>8</sub>" W x 28<sup>1</sup>/<sub>2</sub>" H x 23" D  
 Door Clearance 21<sup>3</sup>/<sub>8</sub>"  
 Weight 273 lb

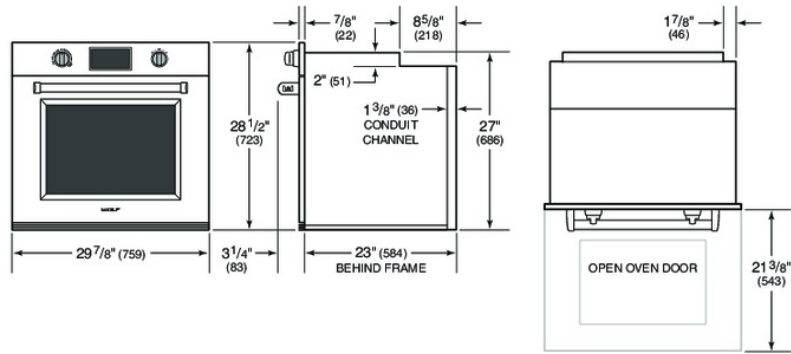
##### OVEN INTERIOR

Interior 25<sup>1</sup>/<sub>4</sub>" W x 17<sup>1</sup>/<sub>2</sub>" H x 19<sup>7</sup>/<sub>8</sub>" D  
 AHAM Overall Capacity 5.1 cu ft  
 AHAM Usable Capacity 3.2 cu ft

##### ELECTRICAL

Supply 240/208 VAC, 60 Hz  
 Service 30 amp circuit  
 Conduit 4"

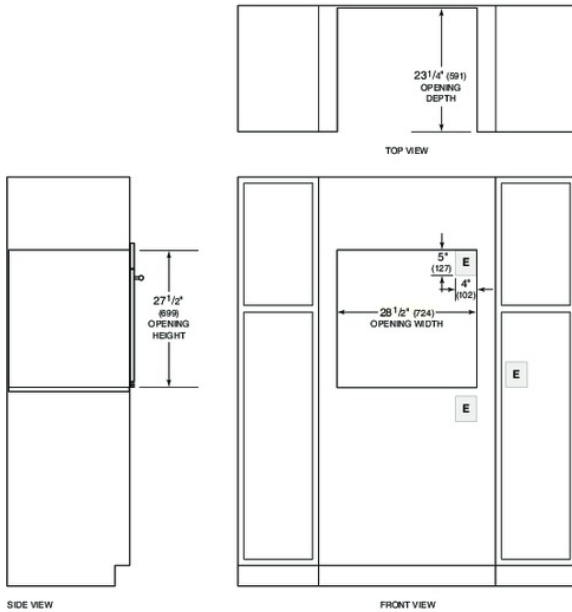
#### DIMENSIONS



Specifications are subject to change without notice. Visit [wolfappliance.com/specs](http://wolfappliance.com/specs) for the most up-to-date information.

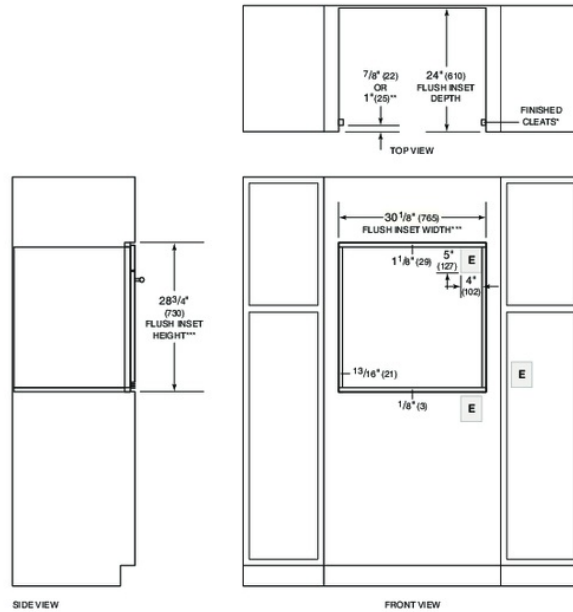
Dimensions may vary  $\pm 1/8"$  (3). Dimensions in parentheses are millimeters unless otherwise specified.

#### STANDARD INSTALLATION



NOTE: Location of electrical supply within opening may require additional cabinet depth.

#### FLUSH INSET INSTALLATION



\*1" (25) minimum depth. Shaded areas will be visible and should be finished to match cabinetry.  
 \*\*7<sup>7</sup>/<sub>8</sub>" (222) for professional and transitional models and 1" (25) for contemporary model.  
 \*\*\*Dimension provides minimum reveals.  
 NOTE: Location of electrical supply within opening may require additional cabinet depth.

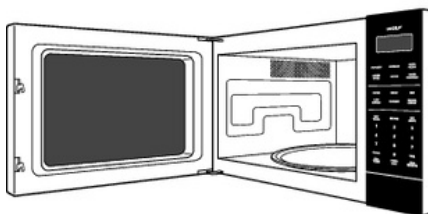


wolfappliance.com

### Standard Microwave Oven

#### FEATURES

- Built-in or freestanding option for design versatility.
- Built-in trim kits available to match Wolf L and E series ovens.
- Large-capacity interior.
- Easy-to-operate control panel and programmable power options.
- Sensor cooking to monitor and adjust settings.
- Warming feature for gentle heating.
- Turntable is removable for easy cleaning.
- Interactive display with timer up to 99 minutes.
- English, French and Spanish language options.
- Menu label and food guide.
- Interior light and window in door.
- One-touch door open pad.
- Safety door latches will not allow oven to operate unless door is closed.



#### MODEL OPTIONS

##### STANDARD MICROWAVE

Model

MS24

#### BUILT-IN TRIM KITS

- 27" E series.
- 30" E series.
- 30" L series.

Optional trim kits are available through an authorized Wolf dealer. For local dealer information, visit the find a showroom section of our website, [wolfappliance.com](http://wolfappliance.com).



wolfappliance.com

### Standard Microwave Oven

#### SPECIFICATIONS

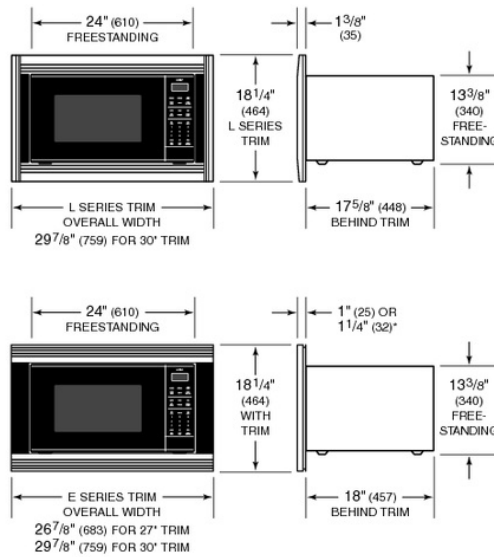
PRODUCT	
Dimensions	24"W x 13 <sup>3</sup> / <sub>8</sub> "H x 19 <sup>1</sup> / <sub>8</sub> "D
Weight	50 lb
OVEN INTERIOR	
Capacity	2.0 cu ft
Dimensions	17 <sup>3</sup> / <sub>8</sub> "W x 10 <sup>1</sup> / <sub>2</sub> "H x 18 <sup>5</sup> / <sub>8</sub> "D
ELECTRICAL	
Power	1200 W
Supply	120 VAC, 60 Hz
Service	15 amp circuit
Power Cord	4 ft

If the microwave oven is built in, a trim kit is required for proper ventilation.

Specifications are subject to change without notice. Visit [wolfappliance.com/specs](http://wolfappliance.com/specs) for the most up-to-date information.

Dimensions may vary ±1/8" (3). Dimensions in parentheses are millimeters unless otherwise specified.

#### DIMENSIONS

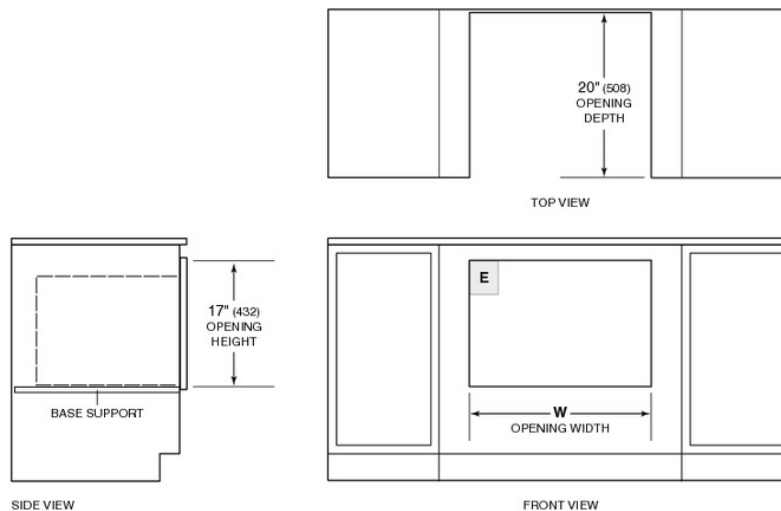


\*1<sup>1</sup>/<sub>4</sub>" (32) for contemporary E series trim only.

#### OPENING WIDTH

TRIM	W
27" Trim	25 <sup>1</sup> / <sub>4</sub> " (641)
30" Trim	27 <sup>1</sup> / <sub>2</sub> " (699)

#### INSTALLATION WITH TRIM



NOTE: Dashed line represents profile of unit.

## Product Details and Dimensions



### Wolf 827870 "M Series" Installation Kit



#### Details and Dimensions

Additional  
Information

◆ Standard Microwave 30" Stainless Trim-M  
Series

Disclaimer -- This is not an actual Manufacturer's Specification Sheet. The details and dimensions listed are accurate to the best of our knowledge at the time this document was produced. For an official specification sheet, please contact the manufacturer directly.

24" DISHWASHER - PANEL READY



DW2450



### FEATURES

Custom wash and dry options and three separate spray arms to ensure optimal cleaning performance

Height-adjustable middle rack and fold-down tines adjust to any size or combination of dishes

Accepts cabinet panels for a custom look or stainless panels and handles to match Sub-Zero and Wolf products

Near-silent operation never interrupts the conversation

Easy-to-use, touch controls and display are hidden to maintain clean lines and a status floor light indicates cycle status

LED lit interior for better interior visibility

Rigorously tested in our U.S. manufacturing facilities to ensure decades of use

Exceptional 24/7 support from Madison, WI-based Customer Care team

### ACCESSORIES

Pro Handle

Tubular Handle

24" Stainless Steel Door Panels

60cm Stainless Steel Door Panels

24" Stainless Steel Kickplates

60cm Stainless Steel Kickplates

Accessories are available through an authorized dealer.  
For local dealer information, visit [subzero-wolf.com/locator](http://subzero-wolf.com/locator).



### HANDLE ACCESSORIES

PRO



TUBULAR



Specifications are subject to change without notice. This information was generated on November 26, 2018. Verify specifications prior to finalizing your cabinetry/enclosures.

### 24" DISHWASHER - PANEL READY

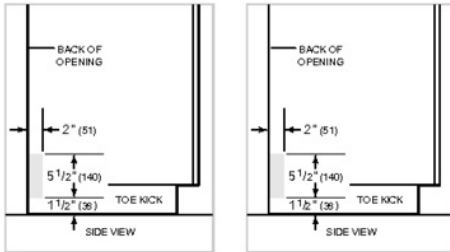


#### PRODUCT SPECIFICATIONS

Model	DW2450
Dimensions	23 5/8"W x 34 1/2"H x 23 1/4"D
Door Clearance	26 3/4"
Electrical Supply	115 VAC, 60 Hz
Electrical Service	15 amp dedicated circuit
Receptacle	3-prong grounding-type
Cord Length	3'
Water Connection	5' braided tubing with 3/8" female compression fitting
Drain Connection	5' (1.5 m) corrugated tubing
Plumbing Pressure	30–140 psi

#### ELECTRICAL

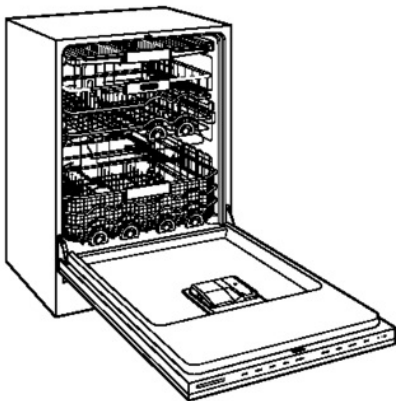
#### PLUMBING



NOTE: Dimensions in parenthesis are in millimeters unless otherwise specified

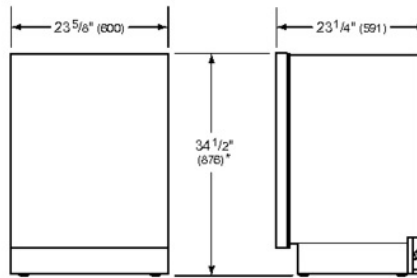
PANEL SPECIFICATIONS For complete panels specifications including width/height, weight requirements and thickness requirements visit [subzero-wolf.com/reveal](http://subzero-wolf.com/reveal)

#### INTERIOR VIEW

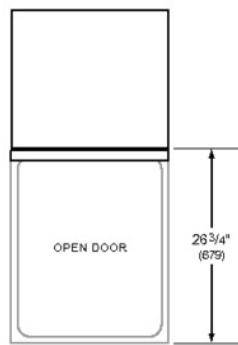


This illustration is intended for interior reference only and may not represent the exterior of the model being specified.

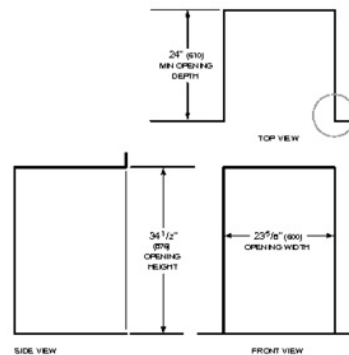
#### DIMENSIONS



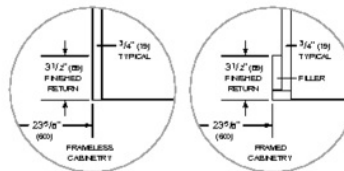
\*34" (864) MIN TO 34 5/8" (880) MAX



#### STANDARD INSTALLATION



NOTE: 3/4" (19) finished returns will be visible and should be finished to match cabin



Specifications are subject to change without notice. This information was generated on November 26, 2018. Verify specifications prior to finalizing your cabinetry/enclosures.

### 15" ICE MAKER WITH PUMP - PANEL READY



#### UC-15IP

#### FEATURES

Accepts custom panels for an integrated look within cabinetry or stainless-steel accessory panels and handles to match other Sub-Zero, Wolf, and Cove products

Pump allows for more flexible install. Unit does not need to be immediately next to drain, a hose can be run and the pump assists the water removal in those situations

Produces up to 50 pounds of octagonal-shaped ice per day; stores 25 pounds at a time

Locks in cold air to ensure freshness with magnetic door seals

Set the two, four, and eight-hour delay to temporarily stop ice production, or pause ice production at the same time every day with auto-delay

Holds built-in ice scoop neatly in the door so it is there when you need it

#### ACCESSORIES

15" Stainless Door Panel with Pro Handle

15" Stainless Door Panel with Tubular Handle

15" to 18" Filler

18" Stainless Door Panel with Pro Handle

18" Stainless Door Panel with Tubular Handle

Cleaner For Undercounter Ice Maker

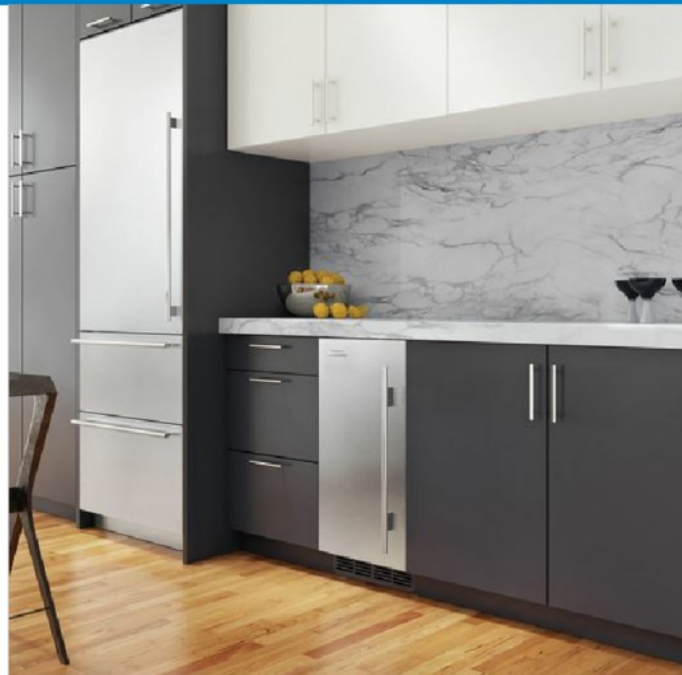
Sanitizer For Undercounter Ice Maker

Stainless Steel Kickplate

Stainless Steel Pro Handles

Stainless Steel Tubular Handles

Accessories are available through an authorized dealer. For local dealer information, visit [subzero-wolf.com/locator](http://subzero-wolf.com/locator).



#### HANDLE ACCESSORIES

PRO



TUBULAR



#### PRODUCT DETAILS

##### FREEZER

- Halogen lighting
- Built-in ice scoop

Specifications are subject to change without notice. This information was generated on March 29, 2019. Verify specifications prior to finalizing your cabinetry/enclosures.

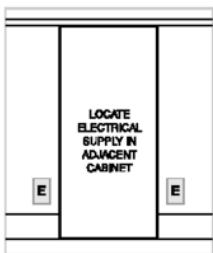
### 15" ICE MAKER WITH PUMP - PANEL READY



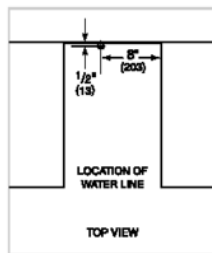
#### PRODUCT SPECIFICATIONS

Model	UC-15IP
Dimensions	14 3/4"W x 33 5/8"H x 23"D
Door Clearance	18"
Weight	117 lbs
Electrical Supply	115 VAC, 60 Hz
Electrical Service	15 amp dedicated circuit

#### ELECTRICAL



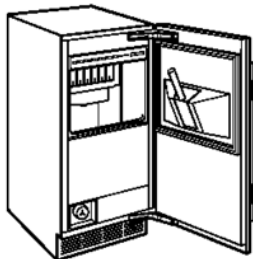
#### PLUMBING



**ICE MACHINE DRAIN** Ice machine models can be ordered with or without a drain pump. Models without a pump will drain water by gravity. A drain must be provided for all models.

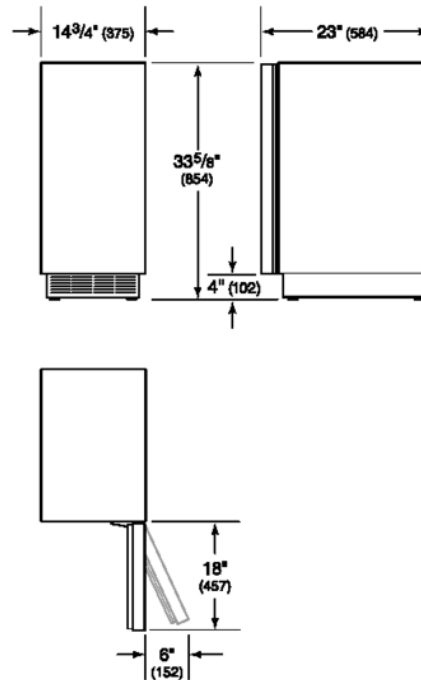
**NOTE:** Dimensions in parenthesis are in millimeters unless otherwise specified

#### INTERIOR VIEW

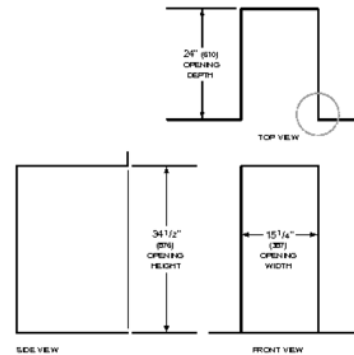


This illustration is intended for interior reference only and may not represent the exterior of the model being specified.

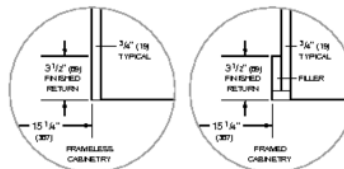
#### DIMENSIONS



#### STANDARD INSTALLATION



**NOTE:** 3/2" (81) finished returns will be visible and should be finished to match cabin



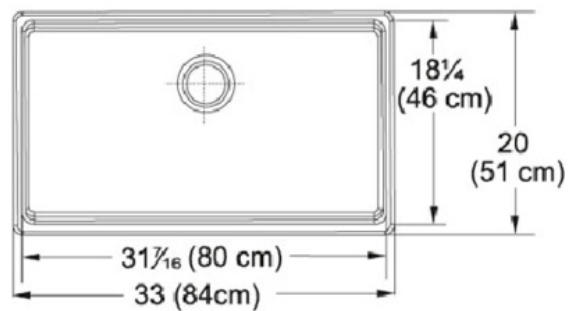
Specifications are subject to change without notice. This information was generated on March 29, 2019. Verify specifications prior to finalizing your cabinetry/enclosures.

KITCHEN  
SYSTEMS



# SPECIFICATION SHEET

PRODUCT FAMILY: Sinks FINISH: Fireclay White SERIES: FARM HOUSE MODEL: FHK710-33



### Product Information

<b>FUN#</b>	130.0079.634
<b>US Part Number</b>	FHK710-33WH
<b>Minimum Cabinet Size</b>	33"
<b>Drain Opening</b>	3 1/2"
<b>Outer Dimensions</b>	33"x20"
<b>Bowl Size</b>	31 7/16"x18 1/4"x9 1/16"
<b>Number of Bowls</b>	1
<b>*</b>	Dimensions may vary by 2% (plus or minus) due to material attributes and firing process.
<b>Type of Material</b>	Fireclay

# ROHL

Authentic Luxury for Kitchen and Bath®

[www.rohlhome.com](http://www.rohlhome.com)



### Extended Disposal Flange

ROHL Kitchen Accessories

## ISE10082

#### FEATURES

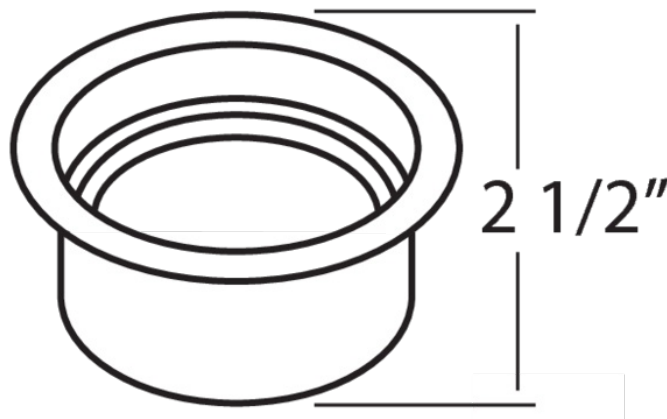
- For use with Allia and Shaws Original sinks
- Works with ISE batch feed and continuous feed disposals including Sears, KitchenAid, Whirlpool and fits ISE Evolution Series
- Custom made for ROHL
- For standard 3 1/2" drains
- Brass construction except stainless steel model
- Matches ROHL finishes

#### COLORS/FINISHES

- Polished Chrome
- Polished Nickel
- Satin Nickel
- Tuscan Brass
- English Bronze
- Inca Brass
- Stainless Steel
- White
- Biscuit
- Black
- Matte Black

#### WARRANTY

- 2 years on manufacturer defects\*
- \*No warranty on Tuscan Brass Finish (TCB)



Consult your local ROHL showroom for additional information and specifications. For complete warranty details and a list of showrooms, go to [www.rohlhome.com](http://www.rohlhome.com).