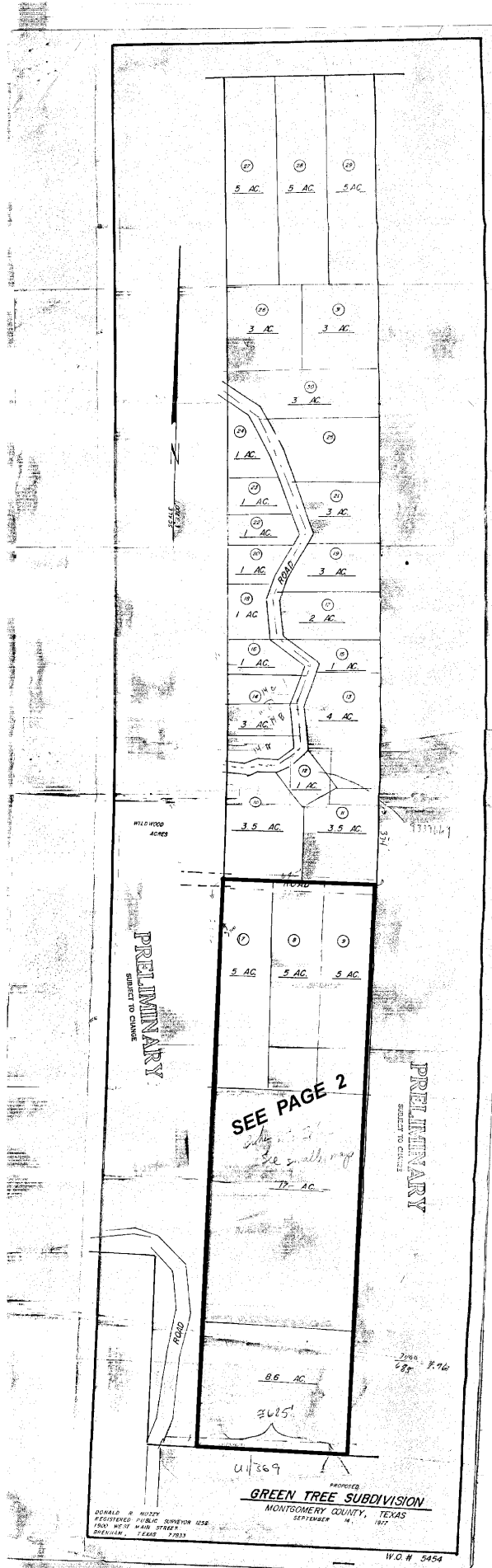


Copyright 2026 The Data, Inc. All Rights Reserved. Warning: This is also trade secret material.



SEE PAGE 2
Subdiv. 2
See small map

PRELIMINARY
SUBJECT TO CHANGE

PRELIMINARY
SUBJECT TO CHANGE

GREEN TREE SUBDIVISION
MONTGOMERY COUNTY, TEXAS

RESERVED PUBLIC SUPERVISOR USE
1907
MONTGOMERY COUNTY, TEXAS

W.O.N. 5454

▲ SUMMERS ESTATES
MZ3394 7.372 AC
08-11-2015

