



3223 Longhorn Circle, Manvel, Texas 77578

Welcome to this beautifully maintained home where pride of ownership is evident throughout! Featuring fresh paint, updated tile flooring, and an exceptional layout, this spacious 4–5 bedroom, 3.5 bath home offers the perfect blend of comfort, functionality, and versatility.

Step inside to soaring ceilings, engineered wood flooring, a cozy gas fireplace, and a wall of windows that fills the living space with natural light. The open-concept kitchen is designed for entertaining with granite countertops, 42" cabinetry, gas cooktop, breakfast bar, pantry, and seamless flow into the family room.

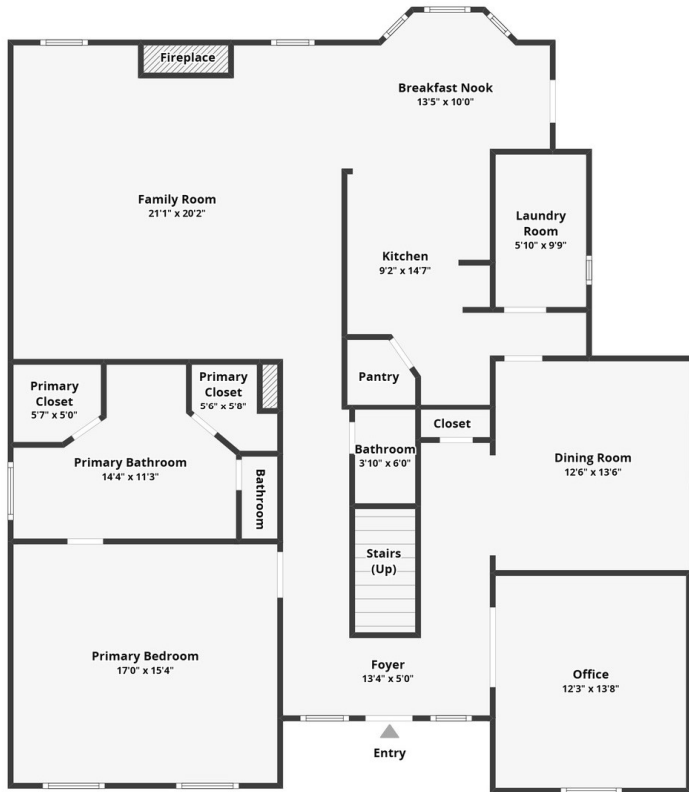
The thoughtfully designed floor plan includes a private guest suite with en-suite bath, a serene primary retreat with dual walk-in closets, jetted tub, separate shower, and split-bedroom layout for added privacy. Upstairs features an enormous game room plus spacious secondary bedrooms connected by a convenient Hollywood-style bath. A huge flex room offers endless possibilities as a home office, second living area, media room, or optional fifth bedroom.

Car enthusiasts, hobbyists, or anyone needing extra storage will love the impressive 4-car oversized garage, complete with a massive unfinished attic space ready for storage, workshop space, or future garage apartment conversion. The double-wide driveway and 2-car porte-cochere provide parking for up to 10 vehicles.

Enjoy peaceful evenings in the private backyard with no rear neighbors, plus access to neighborhood amenities including parks, trails, and clubhouse. Conveniently located near Pearland shopping, dining, and entertainment, and zoned to highly acclaimed Alvin ISD schools including Shadow Creek High School.

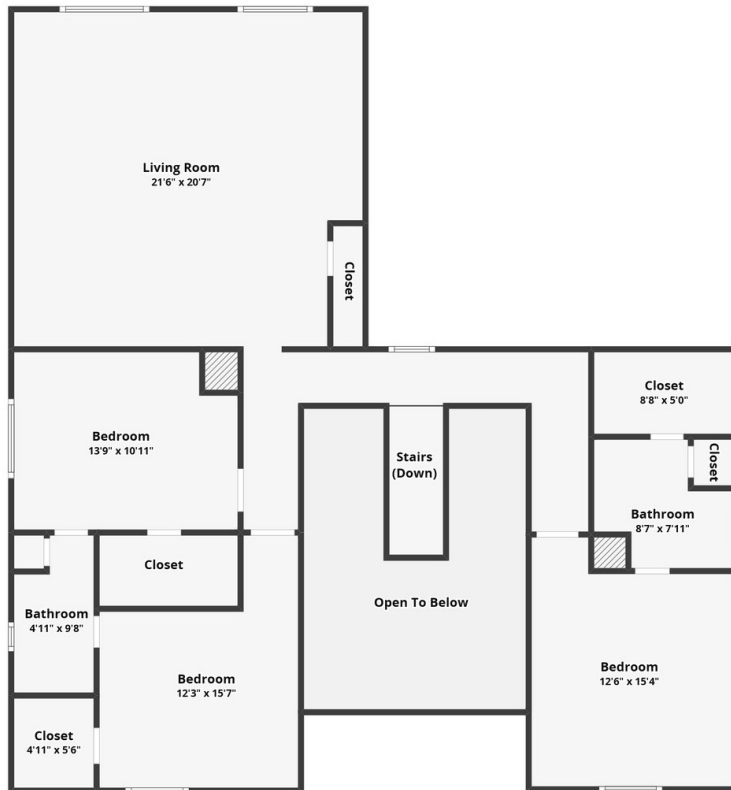
This one truly checks every box — space, storage, flexibility, and location all in one exceptional property.





All dimensions are approximate and subject to independent verification.

1st Level



All dimensions are approximate and subject to independent verification.

2nd Level