



TEALPOINTE
Lake Estates

20318 TEALPOINTE
RIDGE LN



5,033 SQUARE FEET OF CUSTOM LIVING

- Stunning 1-Story Design with 4 Bedrooms, 4.1 Baths, and a 4-Car Garage
- Enter through the Grand Foyer into the Living Area, featuring a gas fireplace and views of the Back Porches (36 x 13 and 14 x 23)
- Chef's Kitchen with high-end appliances including a 48" range with double ovens, walk-in Pantry, oversized island with space for seating and storage, and a Butler's Pantry connecting to the Formal Dining Room
- Breakfast Area, off Kitchen, has access to Back Porches - perfect for Indoor/Outdoor Entertaining!
- Primary Suite with separate entrance to Back Porch, overlooks Backyard. Primary Bath with dual vanities, deep soaking bathtub, walk-in shower, and 2 walk-in closets
- All Jamestown Estate Homes in the Tealpointe Lake Estate community have Spray Foam Attic Insulation, Tankless Water Heater(s) and Uponor PEX Water Lines



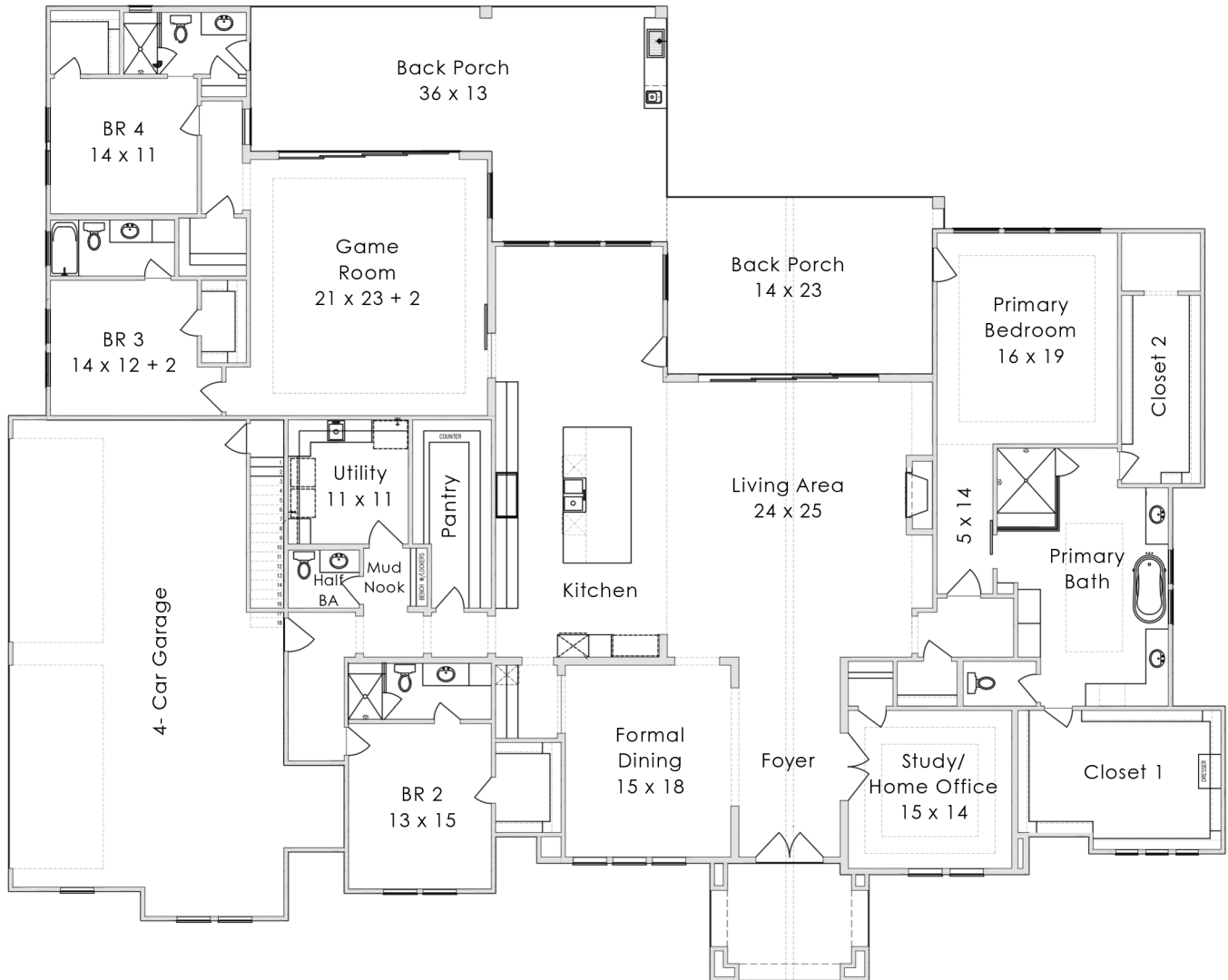
Greg Miller

Greg.Miller@JamestownEstateHomes.com

832.651.7487

Jamestown
ESTATE • HOMES

**5,033 SQUARE FEET, 4 BEDROOM/4.1 BATH,
WITH 4-CAR GARAGE**



Copyright Jamestown Estate Homes 2025 and subject to change. Photographs, renderings, and floor plans are intended to represent the overall design concept. Final home details, materials, and dimensions may vary.

