



150 Autumn Way
Huntsville, TX





Modern prairie-influenced transitional style and timeless luxury come together in this exceptional custom home on a private 2.56-acre setting, where every detail reflects elevated craftsmanship and intentional design. Thoughtfully created for both refined living and effortless entertaining, the home blends warm architectural character with functional luxury throughout.

The interior showcases soaring ceilings, expansive windows, rich wood flooring, and curated architectural details that create a light-filled and inviting atmosphere. A dramatic custom entry opens to the formal dining room accented by a climate-controlled wine room, while a handsome study with library-style feature wall adds both sophistication and functionality. A striking wood staircase further enhances the architectural presence.

At the heart of the home, the open living area is anchored by a gas fireplace framed by custom built-ins and by walls of windows overlooking the outdoor living spaces and pool. Seamlessly connected, the beautifully appointed island kitchen was designed for both everyday living and entertaining, featuring custom shaker-style cabinetry, abundant storage, and a well-appointed butler's pantry.

The downstairs primary suite serves as a luxurious private retreat features an inviting bath highlighting premium finishes with separate vanities, soaking tub, walk-in shower, linen storage, and generous closet space. Upstairs, spacious secondary bedrooms, two baths, and additional media/living area provide exceptional flexibility for gatherings, guests, or multi-purpose living.

Designed to embrace indoor-outdoor living, the expansive covered back porch features soaring ceilings, a fireplace, outdoor kitchen, and beautiful views of the rectangular pool and surrounding property — creating an ideal setting for entertaining or quiet evenings at home.

Prairie-inspired architecture, strong horizontal lines, and thoughtfully balanced materials subtly reflect Frank Lloyd Wright influences while maintaining a timeless transitional aesthetic. Additional highlights include exceptional storage throughout, a covered breezeway leading to the oversized 3-car garage, whole-house generator, and an impressive 25x40 shop.

AGENT CONTACT

Cindy Markham

REALTOR®

936-661-4427

cindy@markhamrealty.com



DESIGN & CRAFTSMANSHIP

- Modern prairie-inspired transitional design with Frank Lloyd Wright influences
- Striking symmetrical arrangement of large dark-framed windows with vertical groupings
- Elevated craftsmanship throughout
- Wide trim, clean lines without excessive ornamentation
- Timeless finishes paired with functionality for comfort, entertaining, and flexibility
- Shaker style cabinetry and doors
- 12' and 14' ceilings
- Open flowing spaces
- Warm yet refined design aesthetic featuring brick, stucco and stacked rock



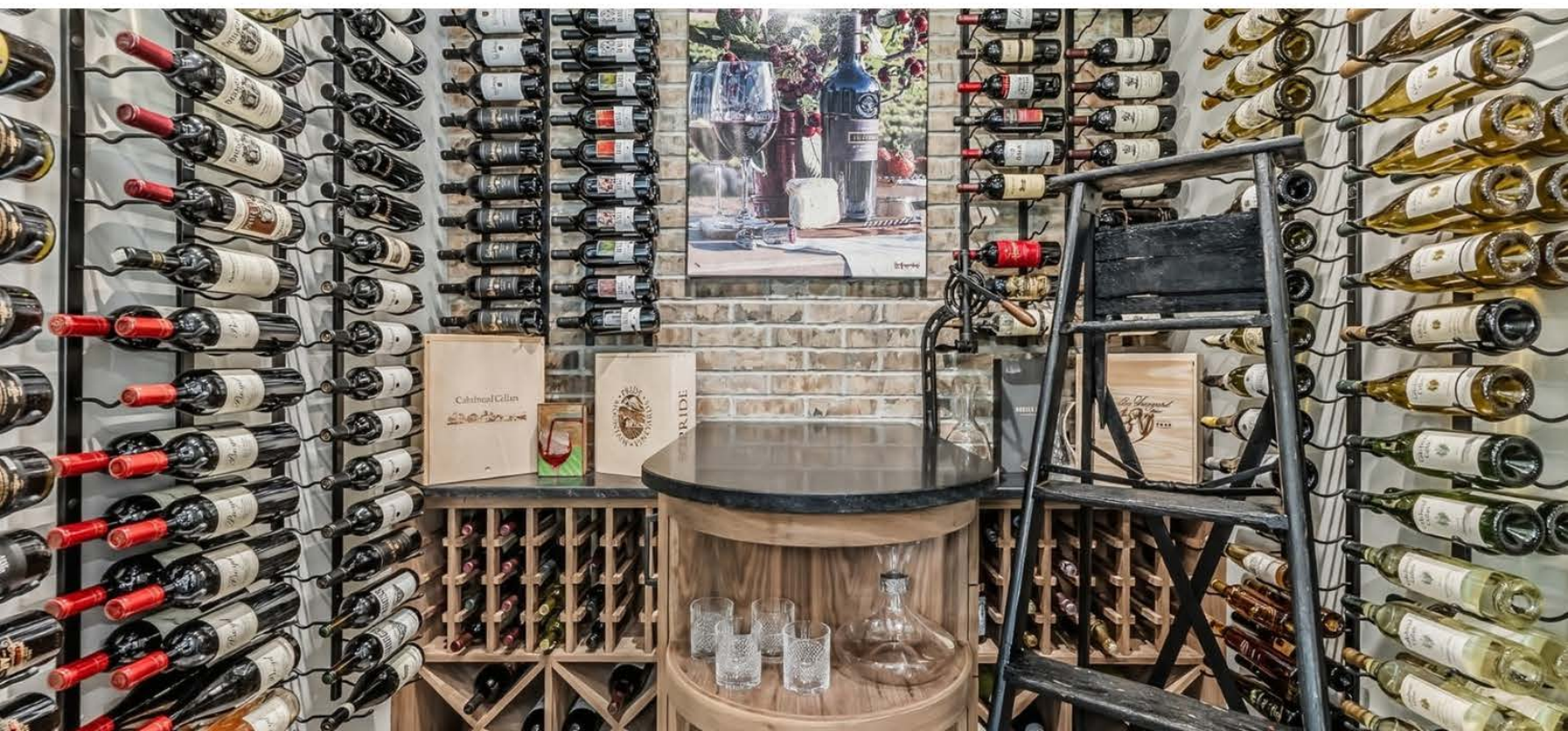
INTERIOR FEATURES

- 4,062 square feet
- Custom front door creating a dramatic entry experience
- Beautiful wood flooring throughout
- Formal dining room off entry with climate-controlled wine room
- High ceilings throughout home
- Expansive picture windows with backyard and pool views
- Gas log fireplace in living room
- Open-concept living and kitchen design
- Large island kitchen with butler's pantry
- Downstairs primary suite
- Beautiful study with custom library-style bookcase wall and wall for art or photo gallery
- Statement wood staircase
- 3 bedrooms, each with own bath
- Spacious secondary bedrooms
- Additional half bath
- Large laundry room with sink and ample counter and storage space
- Storage nook with bench and built ins
- Exceptional storage throughout home



KITCHEN & ENTERTAINING

- Open-concept kitchen designed to flow seamlessly into living and entertaining spaces
- Clean shaker-style cabinetry
- Quartz countertops paired with clean subway tile backsplash
- Sculptural circular island bar area creating both function and visual impact
- Solid granite farmhouse-style sink
- Additional storage in island
- Soft closing cabinets and drawers
- Under counter lighting
- Premium KitchenAid appliance package including:
 - 6-burner gas cooktop
 - Two ovens
 - Microwave with convection oven option
 - Warming drawer
- Ice maker located in bar/coffee area between kitchen and dining room
- Butler's pantry with abundant storage and windows
- Light fixtures with mixed metal finishes and designer globe pendant lighting





PRIMARY SUITE

- Spacious downstairs primary bedroom
- Walk-in shower with bench seating
- Separate freestanding soaking tub
- Dual vanities
- Linen closet
- Oversized walk-in closet with additional closet space
- Remote-controlled Hunter Douglas blinds in primary bedroom and bath

UPSTAIRS LIVING/GUEST SPACE

- Two large bedrooms and two bathrooms
- Additional upstairs media/living area - ideal for flexible guest or entertainment space
- Two Murphy beds built into cabinetry
- Living space currently accommodates sectional with queen pull-out







LOCATION

Spanning 2.65 +/- acres on the west side of Huntsville, minutes from downtown.

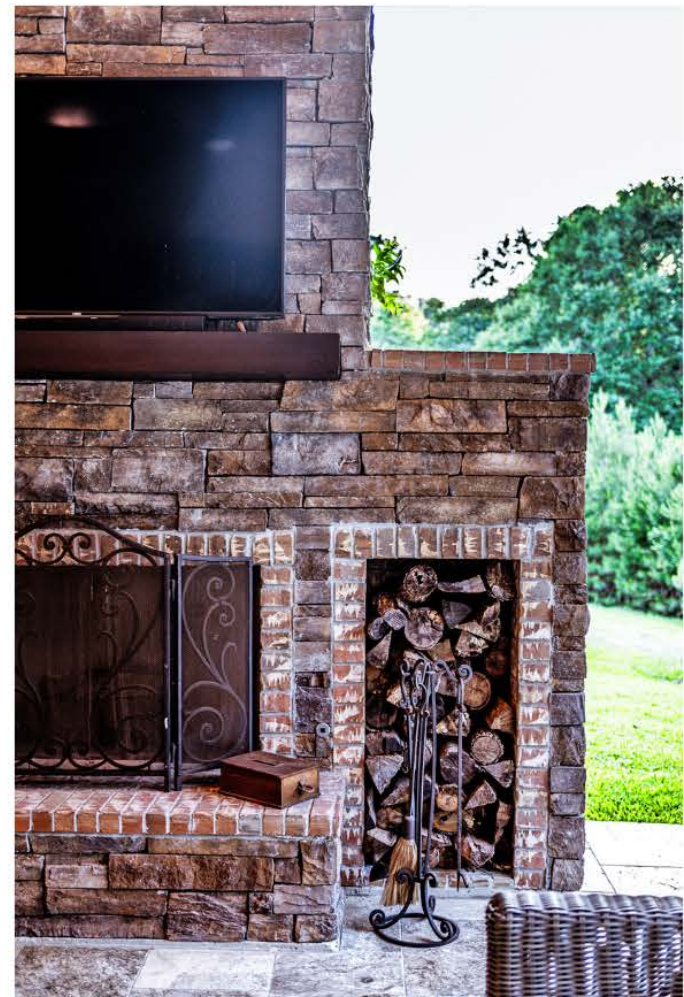


OUTDOOR LIVING

- Expansive covered porches with soaring ceilings and gas light fixture on front
- Covered outdoor living area
- Outdoor kitchen with pellet grill
- Outdoor rock fireplace with gas starter and wood storage
- Beautiful rectangular pool with shelf and pool bubblers
- Covered breezeway connecting home and garage

TECHNOLOGY & UTILITIES

- 3 main HVAC units – 1 up, 2 down with primary suite on its own system (plus separate AC unit for wine room)
- App-controlled HVAC systems
- Hunter Douglas blinds throughout home; remote controlled blinds in primary bedroom
- Fully insulated and climate-controlled wine room with its own AC
- 500-gallon buried propane tank
- Whole house generator
- Sprinkler system
- Exterior insect repellent system
- City of Huntsville water
- Aerobic septic system
- Speakers in kitchen, living room, outdoor back porch, pool area, primary bath
- IT closet upstairs
- Alarm system
- Security cameras accessible by app

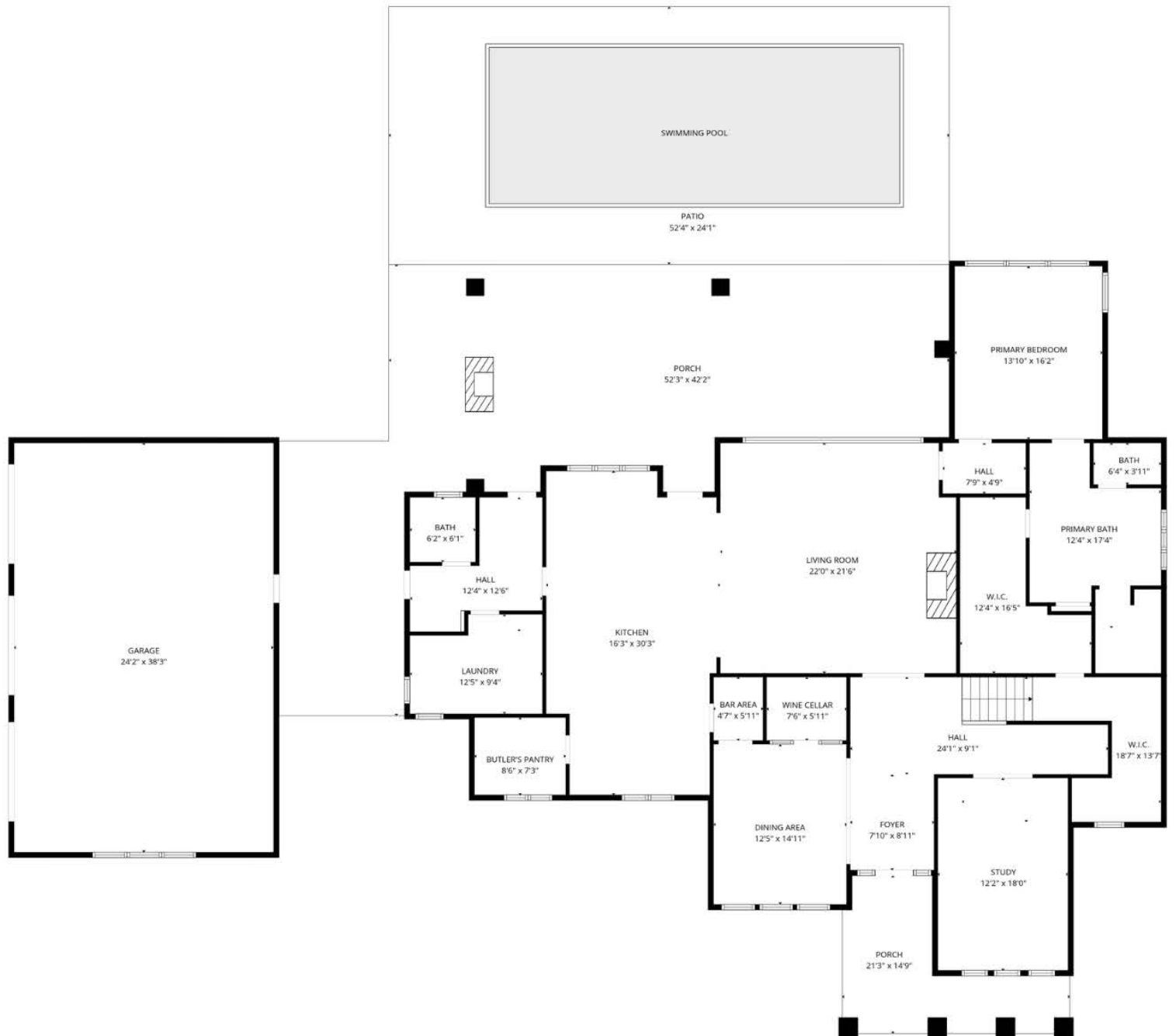
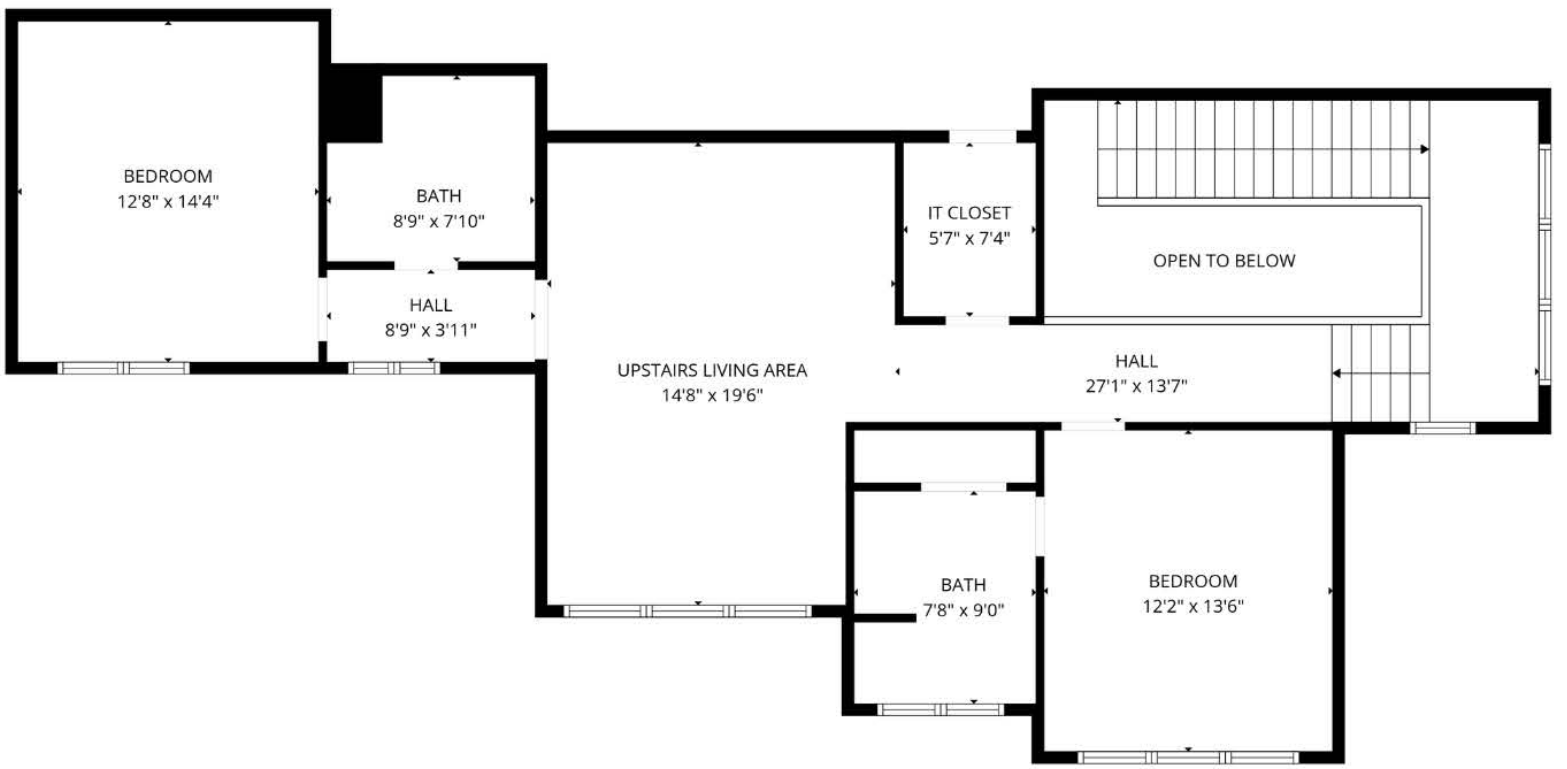




GARAGE & SHOP

- Oversized 3-car garage
- 25x40 shop with stacked rock accents
- 12x40 covered porch at shop
- Two roll-up doors
- Built-in shelving
- Air compressor system installed in shop
- Additional storage on back side of shop





Markham Realty



2715 11th Street, Huntsville, Texas

(936) 295-5989

markhamrealty.com