

3302 Saint Charles Court

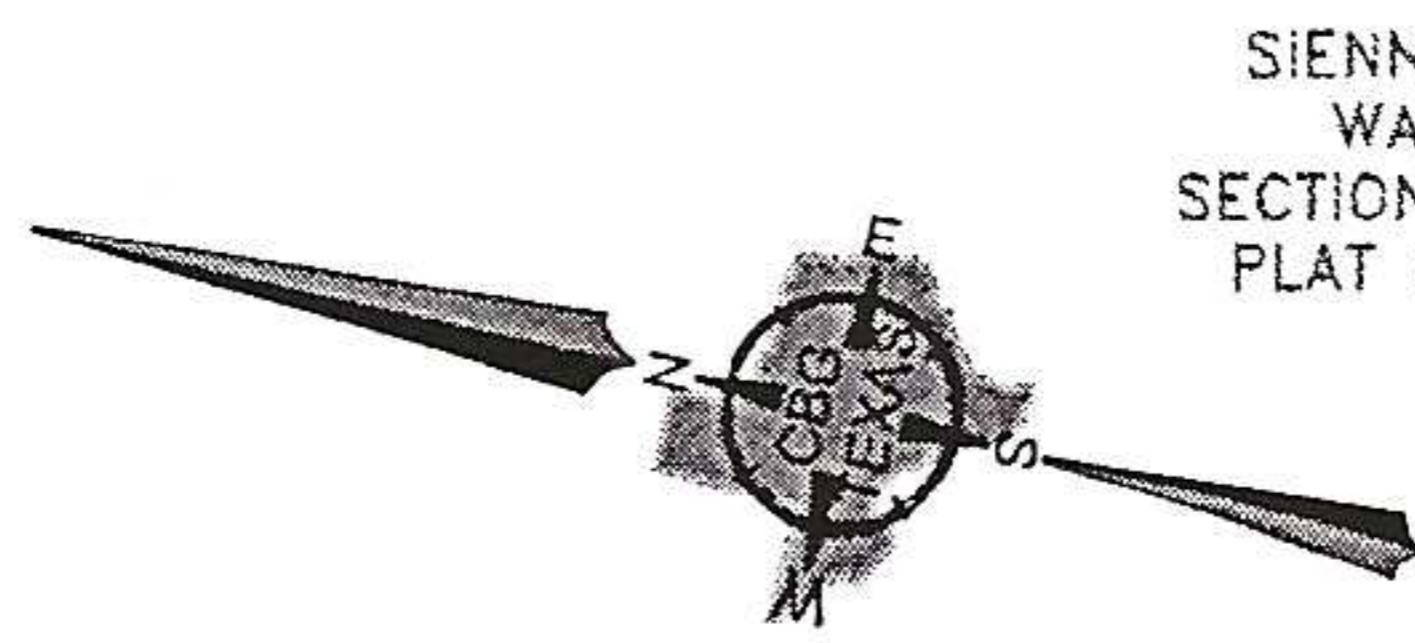
Lot 19, Block 2, SIENNA VILLAGE OF WATERS LAKE SECTION TWENTY-SIX B, Fort Bend County, Texas, according to the map or plat thereof recorded in Plat No. 20050227, Plat Records, Fort Bend County, Texas.



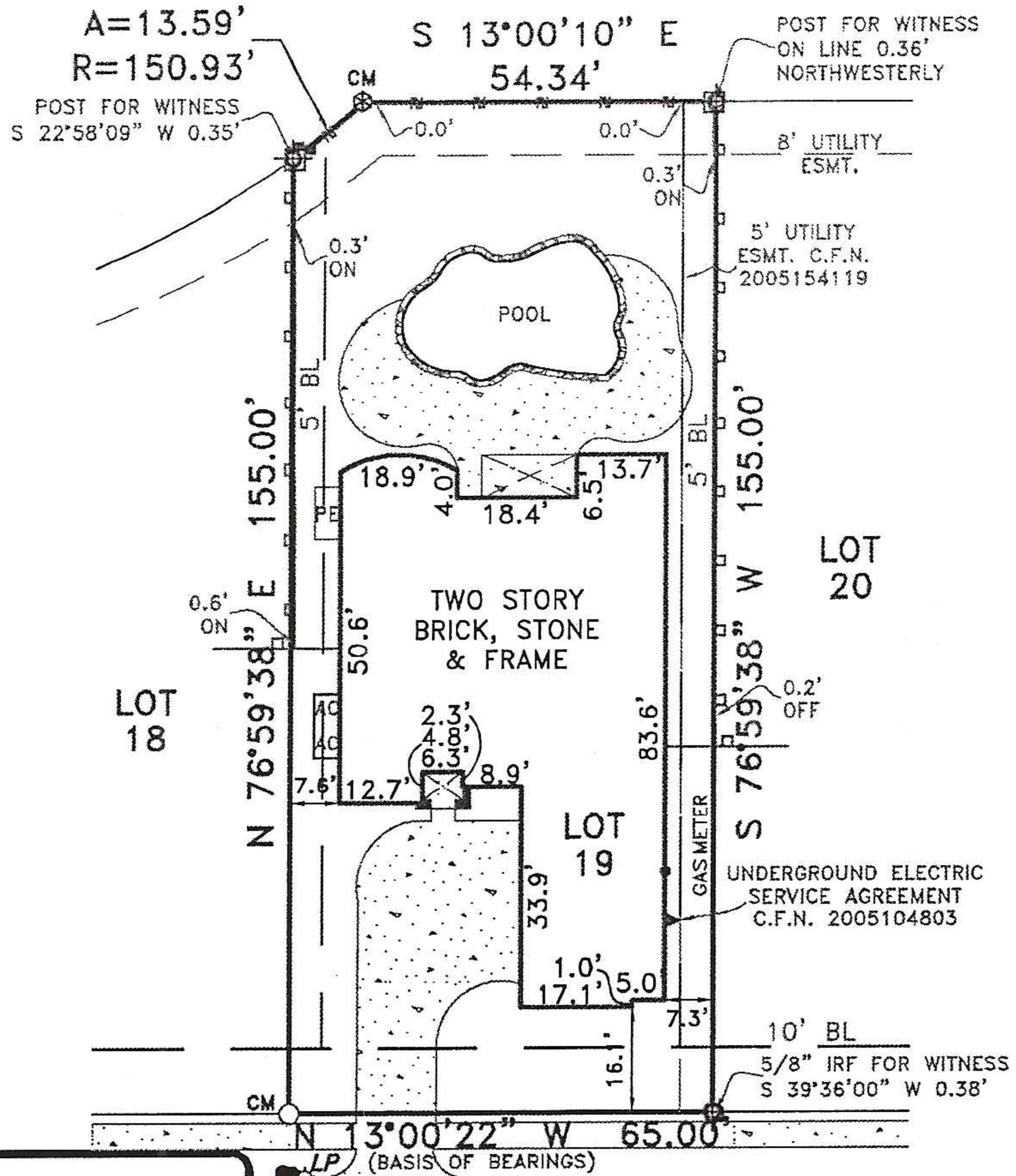
TITLE PARTNERS, LLC

LEGEND

- 1/2" ROD FOUND
- ⊗ 1/2" ROD SET
- 1" PIPE FOUND
- ⊗ "X" FOUND/SET
- ⊗ 5/8" ROD FOUND
- ◆ POINT FOR CORNER
- FENCE POST FOR CORNER
- CM CONTROLLING MONUMENT
- AC AIR CONDITIONER
- PE POOL EQUIPMENT
- TE TRANSFORMER PAD
- COLUMN
- POWER POLE
- ▲ UNDERGROUND ELECTRIC
- △ OVERHEAD ELECTRIC
- OHP— OVERHEAD ELECTRIC POWER
- OES— OVERHEAD ELECTRIC SERVICE
- CHAIN LINK
- WOOD FENCE 0.5' WIDE TYPICAL
- IRON FENCE
- X— BARBED WIRE
- DOUBLE SIDED WOOD FENCE
- /— EDGE OF ASPHALT
- /— EDGE OF GRAVEL
- CONCRETE
- COVERED AREA
- BRICK
- STONE



SIENNA VILLAGE OF WATERS LAKE SECTION TWENTY-SIX A PLAT NO. 20040016



EXCEPTIONS:

NOTE: PROPERTY SUBJECT TO TERMS, CONDITIONS, AND EASEMENTS CONTAINED IN INSTRUMENTS RECORDED IN PLAT NO. 20050227, CLERK'S FILE NO.

- 9670899, 9734406, 9891628, 2005130313, 2005130314, 2008045613,
- 2008128378, 2008128379, 2008128380, 2008128381, 2008128665,
- 2008128666, 2008128667, 2008129701, 2008129702, 2008129703,
- 2008129704, 2008129705, 2009036639, 2009036640, 2009105473,
- 2009105474, 2009105475, 2009105476, 2009109289, 2009109534,
- 2009109899, 2009111351, 2009111352, 2009111353, 2009113149,
- 2009121550, 2010005329, 2010005330, 2010005331, 2010005332,
- 2010005333, 2010013818, 2010013819, 2010013820, 2010013821,
- 2010014021, 2010018605, 2010018606, 2010018607, 2010018608,
- 2010018609, 2010018610, 2010020727, 2010022398, 2010023687,
- 2010027283, 2010027284, 2010062664, 2010070649, 2010070650,
- 2010070651, 2011036647, 2011041634, 2011041635, 2011045829,
- 2011096814, 2011121945, 2011121946, 2011121947, 2011121948,
- 2011121949, 2011121950, 2011121951, 2011129834, 2012007980,
- 2012008812, 2012057858, 2012104699, 2012122754, 2012122755,
- 2012122756, 2012128814, 2013002163, 2013002164, 2013002165,
- 2013014852, 2013014853, 2013014854, 2013034837, 2013034838,
- 2013034840, 2013091797, 2013110971, 2013120038, 2013120039,
- 2013120040, 2013120041, 2013120042, 2013135966, 2013142340,
- 2014010579, 2014010580, 2014010581, 2014010582, 2014030568,
- 2014030570, 2014030571, 2014030572, 2014030573, 2014037081,
- 2014037082, 2014037083, 2014037084, 2014037085, 2014074984,
- 2014074985, 2014074986, 2014074987, 2014074988, 2014118372,
- 2014124161, 2015004251, 2015009905, 2015016074, 2015044353,
- 2015045574, 2015055675, 2015097227, 2015097228, 2015097229,
- 2015097230, 2015097231, 2015097232, 2015097233, 2015097234,
- 2015097235, 2015097237, 2105101431, 2015126154, 2015127211,
- 2016007454, 2016007455, 2016007456, 2016009179, 2016009180,
- 2016030489, 2016116885, 2016116886, 2016138286, 2017004716,
- 2017004937, 2017010526, 2017010527, 2017010528, 2017010529,
- 2017010530, 2017010531, 2017031275, 2017031276, 2017031277,
- 2017035115, 2017035116, 2017045642, 2017045643, 2017045644,
- 2017068343, 2017068344, 2017068345, 2017068346, 2017068347,
- 2017087709, 2017116208, 2017116209, 2017116210, 2017116211,
- 2017116212, 2018008982, 2018008983, 2018009033, 2018014374,
- 2018015439, 2018016965, 2018019061, 2018019063, 2018019064,
- 2018036534, 2018043062, 2018045881, 2018045882, 2018045883,
- 2018049713, 2018093314, 2018082886, 2018082887, 2018125798,
- 2018125799, 2018125800, 2018125801, 2018127289, 2018127290,
- 2018127291, 2018127292, 2019002037, 2019002038, 2019006028,
- 2019010088, 2019017112, 2019035843, 2019036032, 2019036033,
- 2019036034, 2019043416, 2019043417, 2019043418, 2019043419,
- 2019043420, 2019124416, 2020060464, 2020060465, 2020067542,
- 2020067543, 2020067544, 2020070988, 2020070990, 2020096754,
- 2020104787, 2005154119, 2005104803, 9614054

NOTES:

NOTE: BEARINGS, EASEMENTS AND BUILDING LINES ARE BY RECORDED PLAT UNLESS OTHERWISE NOTED.

FLOOD NOTE: According to the F.I.R.M. No. 48157C0435L, this property does lie in Zone X-500 year Levee and DOES NOT lie within the 100 year flood zone.

This survey is made in conjunction with the information provided by Title Partners. Use of this survey by any other parties and/or for other purposes shall be at user's own risk and any loss resulting from other use shall not be the responsibility of the undersigned. This is to certify that I have on this date made a careful and accurate survey on the ground of the subject property. The plat hereon is a correct and accurate representation of the property lines and dimensions as indicated; location and type of buildings are as shown; and EXCEPT AS SHOWN, there are no visible and apparent encroachments or protrusions on the ground.

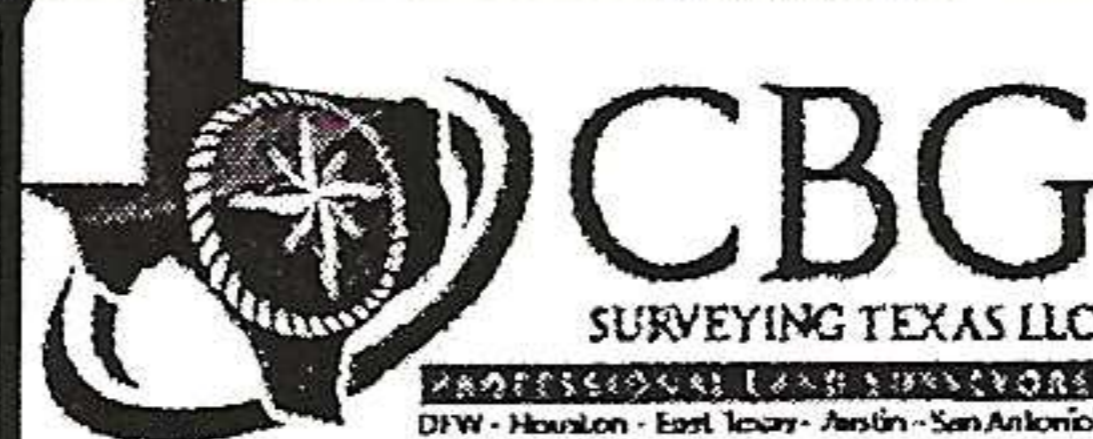
Drawn By: JM/CM

Scale: 1" = 30'

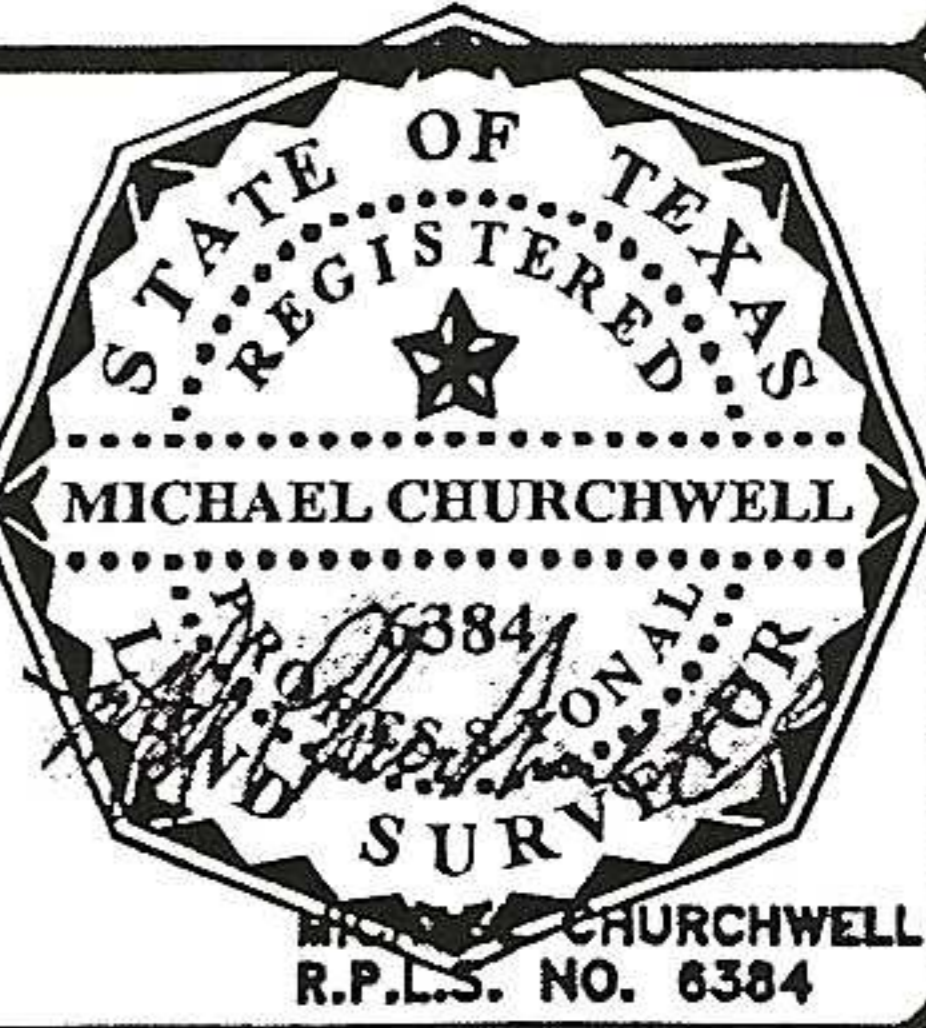
Date: 12-11-2020

GF No.: 4012843T

Job No.: 2024118



12025 Shiloh Road, Ste. 240
Dallas, TX 75228
P 214.349.9485
F 214.349.2216
Firm No. 10168800
www.cbgtllc.com



Accepted by: [Signature]
Purchaser
Date: _____
Purchaser