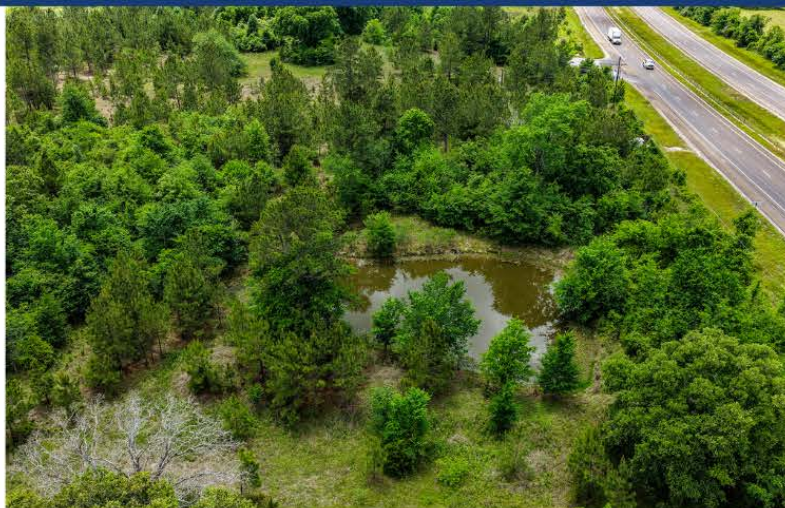




STATE HIGHWAY 19
HUNTSVILLE, TEXAS | 20.49 +/- ACRES



STATE HIGHWAY 19



Just over 20 acres with exceptional potential, ideally located just north of Huntsville. This versatile tract features approximately 518 feet of highway frontage, along with additional road frontage on two sides, offering excellent visibility and multiple access points. The property includes a pond and is equipped with available electricity and public water, making it ready for a variety of uses. With easy accessibility and strong frontage exposure, this site is well-suited for a rural homesite, commercial venture, or mixed-use development. Situated in an area with no known restrictions and outside of zoning regulations, the possibilities are wide open (subject to standard county development requirements). This is a rare opportunity to secure a highly accessible, unrestricted tract in a growing area with increasing development interest.



Markham Realty
Selling Quality Texas Properties Since 1970
contact@markhamrealty.com
936-295-5989 | markhamrealty.com



Scan here for additional information & photos.



Information furnished is from sources deemed reliable, but is not guaranteed by Markham Realty, Inc. The offerings are subject to change in price, errors, omissions, prior sales, or withdrawal without notice. Square footage, acreage size and lot dimensions are approximate. All persons and firms named in this brochure are licensed brokers or salespersons. Markham Realty, Inc. will co-broker with any licensed Broker if Broker and/or agent accompanies his or her prospective buyer from the first (1st) showing forward.

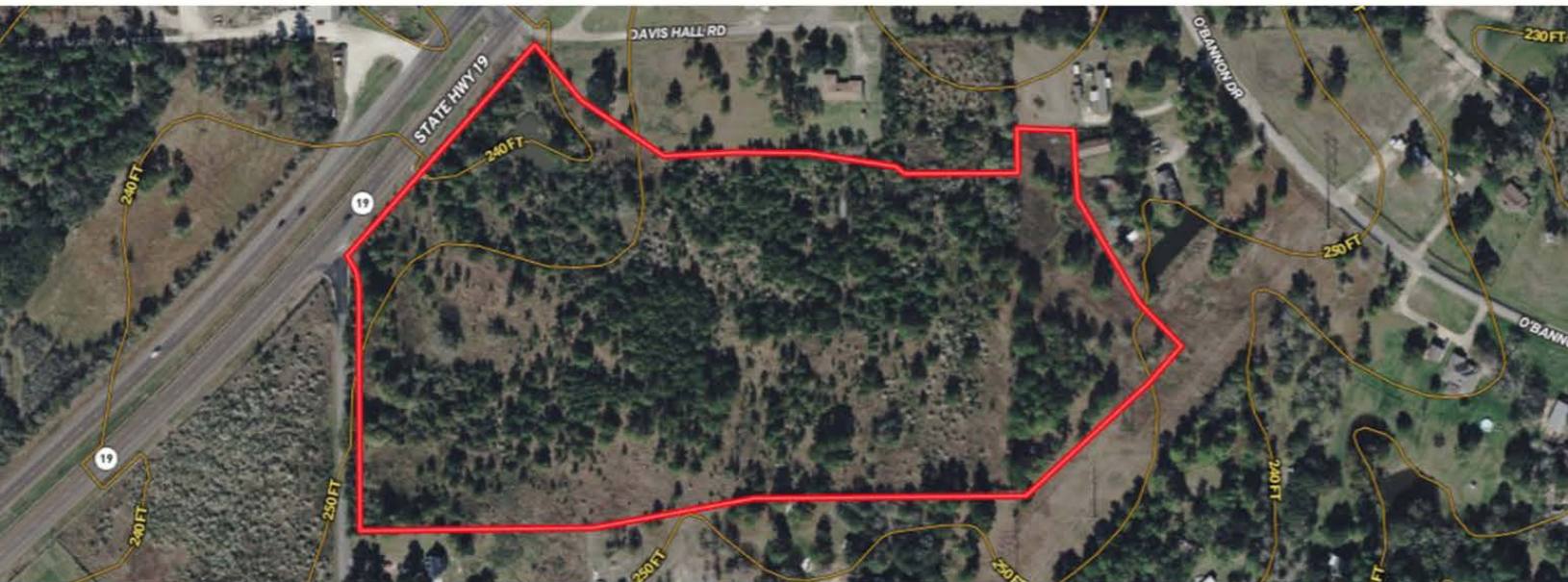
STATE HIGHWAY 19

HUNTSVILLE, TEXAS

Markham
Realty



Directions: From Huntsville, take SH 19 N, property on the right at the corner of Julia Justice and SH 19.



Markham
Realty

Markham Realty
Selling Quality Texas Properties Since 1970
contact@markhamrealty.com
936-295-5989 | markhamrealty.com



Scan here for additional information & photos.



Information furnished is from sources deemed reliable, but is not guaranteed by Markham Realty, Inc. The offerings are subject to change in price, errors, omissions, prior sales, or withdrawal without notice. Square footage, acreage size and lot dimensions are approximate. All persons and firms named in this brochure are licensed brokers or salespersons. Markham Realty, Inc. will co-broker with any licensed Broker if Broker and/or agent accompanies his or her prospective buyer from the first (1st) showing forward.