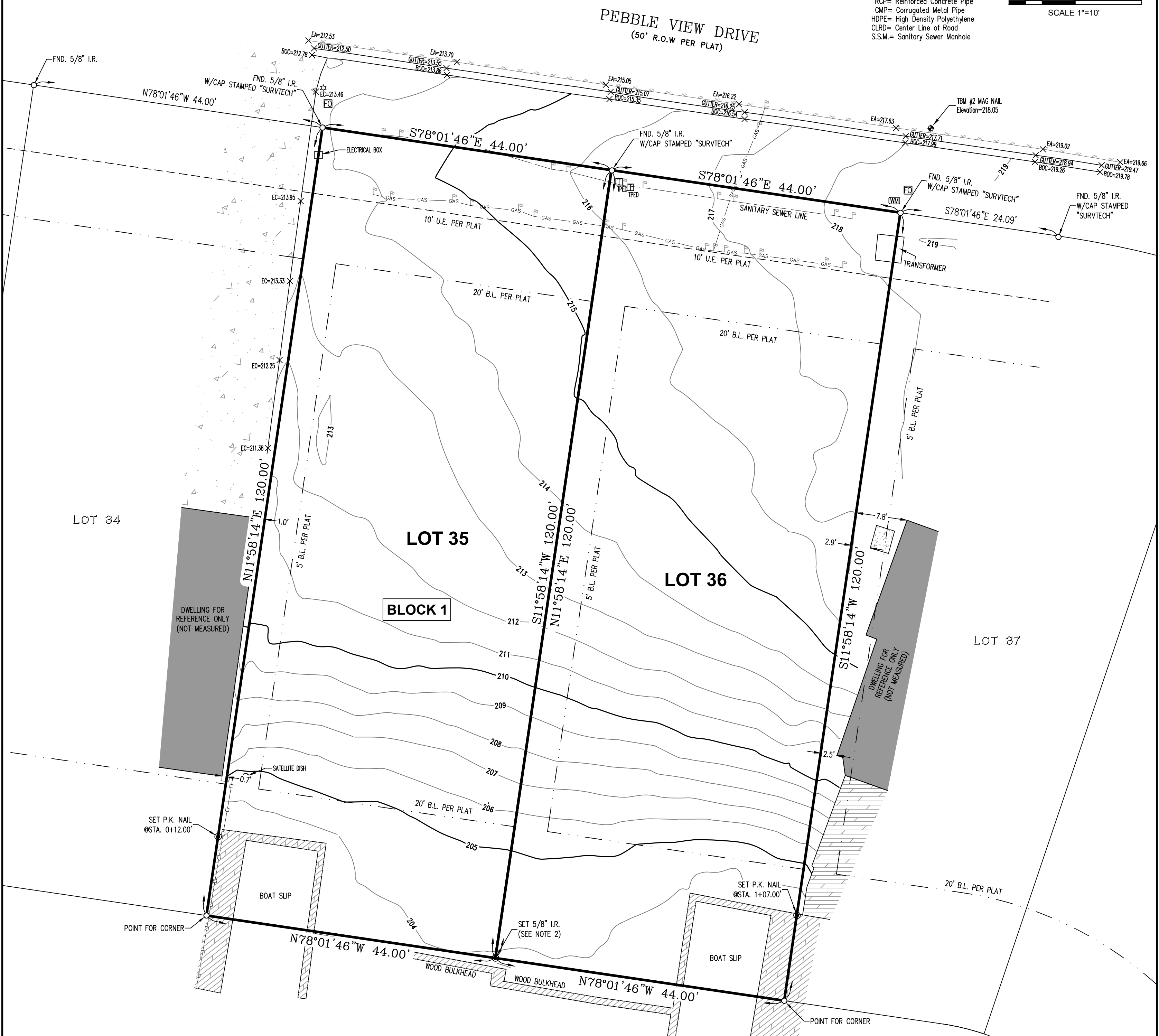
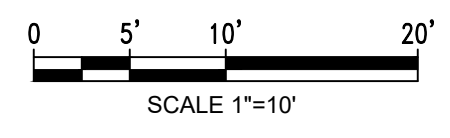


NORTHWEST MANHOLE	
SANITARY MANHOLE Rim Elevation=210.50 NW FL 8" PVC: 204.98' SE FL 8" PVC: 205.09'	

SOUTHEAST MANHOLE	
SANITARY MANHOLE Rim Elevation=220.58 NW FL 8" PVC: 213.89' SE FL 8" PVC: 214.00' SW FL 8" PVC: 214.11'	

**ABBREVIATIONS**

- F.L.= Flow Line
- I.R.= Iron Rod
- OE= Overhead Electric
- TB= Top of Bank
- NG= Natural Ground
- EA= Edge of Asphalt
- EG= Edge of Gravel
- EC= Edge of Concrete
- CC= Corner of Concrete
- CB= Cable Box
- ET= Electrical Transformer
- Toe= Toe of Slope
- TOC= Top of Concrete
- PVC= Polyvinyl Chloride
- RCP= Reinforced Concrete Pipe
- CMP= Corrugated Metal Pipe
- HDPE= High Density Polyethylene
- CLR= Center Line of Road
- S.S.M.= Sanitary Sewer Manhole



**LAKE CONROE**  
SAN JACINTO RIVER AUTHORITY  
C.C.F.N. 2000-014141 R.P.R.M.C.T.

- Notes:
- THE BEARINGS SHOWN HEREON ARE BASED ON THE RECORDED PLAT OF PEBBLE GLEN ON LAKE CONROE & COORDINATES ARE BASED ON TEXAS CENTRAL ZONE NO. 4203 STATE PLANE COORDINATES (NAD83) 2002 ADJUSTMENT. DISTANCE SHOWN ON SURVEY ARE GRID.
  - 5/8 INCH IRON RODS 36 INCHES IN LENGTH WITH SURVEY CAP MARKED "JEFF MOON R.P.L.S. 4639" FOUND OR SET AT ALL BLOCK CORNERS, ANGLE POINTS AND POINTS OF CURVATURE UNLESS OTHERWISE NOTE
  - THIS SURVEY WAS DONE WITHOUT THE BENEFIT OF A TITLE REPORT THAT WOULD REFLECT ANY EASEMENTS, BUILDING LINES, OR OTHER RESTRICTIONS.
  - SURVEYOR HAS NOT ABSTRACTED THIS TRACT OF LAND FOR OWNERSHIP, EASEMENTS, RESTRICTIONS, ETC.
  - ELEVATIONS ARE BASED UPON GPS OBSERVATIONS, AND ARE ADJUSTED TO NAVD '88, GEOID 18 DATUM.
  - TEMPORARY BENCHMARK NO 1 SET ON THIS TRACT OF LAND IS A P.K. NAIL SET IN PEBBLE VIEW DRIVE NEAR THE NORTHWEST CORNER OF THE SUBJECT TRACT. (SEE NOTE 5)  
NORTHING: 10133451.5121  
EASTING: 3805797.8654  
ELEVATION= 210.16
  - TEMPORARY BENCHMARK NO 2 SET ON THIS TRACT OF LAND IS P.K. NAIL SET IN PEBBLE VIEW DRIVE NEAR THE NORTHEAST CORNER OF THE SUBJECT TRACT.. (SEE NOTE 5)  
NORTHING: 10133404.6948  
EASTING: 3805954.6674  
ELEVATION= 218.05

**LEGEND & SYMBOLS**

<ul style="list-style-type: none"> <li> Power Pole</li> <li> Meter Loop</li> <li> Guy Anchor</li> <li> Telephone Pedestal</li> <li> Electric Box</li> <li> Electrical Transformer</li> <li> Cable Box</li> <li> Cable Pedestal</li> <li> Pull Box</li> <li> Gas Meter</li> <li> Gas Valve</li> <li> Water Meter</li> <li> Water Valve</li> <li> Fire Hydrant</li> <li> Buried Cable Marker</li> <li> Pipeline Marker</li> <li> Septic Lid</li> <li> Cleanout</li> <li> Irrigation Control Valve</li> <li> Vault Box</li> <li> Culvert</li> <li> Handicap Space</li> </ul>	<ul style="list-style-type: none"> <li> Propane Tank</li> <li> Benchmark</li> <li> Mailbox</li> <li> Meter Pole</li> <li> Utility Pole</li> <li> Underground Utility Flag</li> <li> Telephone Manhole</li> <li> Sanitary Sewer Manhole</li> <li> Storm Sewer Manhole</li> <li> Inlet Grate</li> <li> Well</li> <li> Water Tank</li> <li> Street Sign</li> <li> Sign</li> <li> Light Pole</li> <li> Traffic Signal</li> <li> Monitor Well</li> <li> Pressure Valve</li> <li> Sample Well</li> <li> Bollard</li> <li> Brick Column</li> <li> Metal Fence Post</li> <li> Wood Fence Post</li> </ul>	<ul style="list-style-type: none"> <li> Concrete</li> <li> Covered Area</li> <li> Wood Deck</li> <li> Gravel</li> <li> Asphalt</li> <li> Stairs</li> <li> Elevated Wood Deck</li> <li> Wood Ramp</li> <li> Brick</li> <li> Stone</li> <li> Rock</li> <li> Rip Rap</li> <li> Tile</li> <li> Water</li> <li> 2nd Floor Only</li> <li> Adjoining Structure</li> <li> Wood Bulkhead</li> <li> Stucco Wall</li> <li> Brick Wall</li> </ul>	<ul style="list-style-type: none"> <li> Approximate Location of Sanitary Sewer Line</li> <li> Approximate Location of Storm Sewer Line</li> <li> Approximate Location of Buried Cable TV</li> <li> Approximate Location of Buried Gas Line</li> <li> Approximate Location of Buried Fiber Optic Cable</li> <li> Approximate Location of Buried Water Line</li> <li> Approximate Location of Pipeline</li> <li> Top Bank</li> <li> Flowline</li> <li> Building Line (B.L.)</li> <li> Easement Line</li> <li> Overhead Electric</li> <li> Barbwire Fence</li> <li> Chainlink Fence</li> <li> Wood Fence</li> <li> Rip Wire Fence</li> <li> Wrought Iron Fence</li> <li> Asphalt Road</li> </ul>
---	--	---	---

**LAND & TOPOGRAPHIC SURVEY**  
LOT 35 & 36, BLOCK 1 OF PEBBLE GLEN ON THE LAKE  
A SUBDIVISION IN THE JAMES EDWARDS SURVEY, A-190

MONTGOMERY COUNTY, TEXAS REF: CAB, N, SHT, 125, MAP RECORDS  
Scale: 1" = 10' Date: March 6, 2025  
Address: 12346 Pebble View Drive Conroe, TX 77304  
To: Scott Fendrick Exclusively,

I hereby state that this survey substantially complies with current Texas Society of Professional Surveyors Manual of Practice requirements for a Category 1B, Condition II, TSPS Standard Land Survey & for a Category 6, Condition II, TSPS Topographic Survey.

Jeffrey Moon  
Registered Professional  
Land Surveyor No. 4639

GF# N/A File # 25-T-038 (JTL) Book LL Pg. -  
JEFFREY MOON & ASSOC., INC., P.O. Box 2501, Conroe, TX 77305  
T.B.P.E.L.S. Firm No. 10112200 (936) 756-5266 Fax (936) 756-5281  
All rights reserved Copyright 2024 Jeffrey Moon & Assoc., Inc. ©

