



# Notable Features + Amenities

5-6 Bedrooms | 4 Full & 1 Half Baths | 5,024 Building Sq. Ft. (Per HCAD) | 24,900 Lot Sq. Ft. (Per HCAD) | Built in 1934 (Per HCAD)

## Home Miscellaneous

- Generator installed
- Private drive with circular motor court
- 3-car attached carport (36' x 28') with built-in storage and storage closets
- Private courtyard with pool and covered patio
- Crown moulding and baseboards throughout
- Antique hardwood flooring in all rooms unless noted
- Gated front yard with mature trees and gardens
- Two staircases
- Basement (23' x 10') with wine cellar (13' x 4')
- Entry foyer (20' x 10') with solid wood front door, 21' ceiling, access to formal living and dining rooms, parquet hardwood floors

## Formal Living – 27' x 15'

- 10' ceiling
- Four 24-lite windows with shades
- Gas-powered fireplace with solid marble mantle and hearth
- Six sets of built-in bookshelves

## Formal Dining – 23' x 15'

- 10' ceiling
- Hand-painted wallpaper wall covering
- Open to Sunroom
- Built-in wine display cabinet
- Parquet hardwood floors

## Sunroom – 23' x 5'

- 10' ceiling
- Three full lite floor-to-ceiling windows
  - One is a sliding glass door
- Floor-to-ceiling brick wall
- Two wall sconces
- Stone tile floors

## Library – 16' x 15'

- 10' ceiling
- One 24-lite window with shade
- 15-lite door to garden
- Gas-powered fireplace with marble surround and hearth, wood mantle
- Six sets of built-in bookshelves
- Floor-to-ceiling millwork wall coverings

## Kitchen – 20' x 18'

- 8' ceiling
- Three 12-lite windows
- Two closets containing washer & dryer
- Corian countertops
- Stainless steel dual basin sink
- Dual ovens, dishwasher, fridge/freezer combo, trash compactor
- Built-in cabinetry
- Island with gas cooktop
- Service window to family room
- 9-lite door to pool courtyard
- 2-lite arched door to motor court

## Family Room – 18' x 17'

- 8' ceiling
- Set of 10-lite sliding glass double doors to pool courtyard, flanked by two 15-lite windows
- Two full lite octagonal windows
- Recessed lighting
- Octagonal tile floors

## Powder Room – 8' x 3'

- 8' ceiling
- 3-lite window
- Vanity with marble countertop and decorative sink
- Parquet hardwood floors

## Primary Bedroom – 17' x 15'

- 9' ceiling
- Two 24-lite windows with shades
- One 18-lite window
- Gas-powered fireplace with marble mantle and hearth
- Double door linen closet
- 4-candle chandelier
- Hallway closet with hanging storage

## Primary Bath – 11' x 10'

- 9' ceiling
- 24-lite window
- Tub/shower combo with stone tile surround
- Dual sink vanity with stone countertop
- Built-in cabinetry
- Closet with clothing storage
- Recessed lighting
- Tile floors

## Bedroom 2 – 17' x 15'

- 9' ceiling
- Two 18-lite windows
- Closet with hanging rods
- Flush mount light fixture

## Bedroom 2 Bath – 11' x 6'

- 18-lite window
- Vanity with sink and separate makeup station
- Bathtub with mirrored backsplash
- Tile floors

## Bedroom 3 – 15' x 10'

- 9' ceiling
- Two 24-lite windows with shades
- One 18-lite window
- Single bulb chandelier

## Bedroom 3 Bath – 11' x 6'

- 6-lite window
- Vanity with marble countertop, sink, and makeup station
- Shower with tile surround
- Closet with clothing storage
- Hollywood lighting
- Tile flooring

## Bedroom 4 – 13' x 12'

- 8' ceiling
- Three 12-lite windows
- 4-bulb chandelier
- Closet with clothing storage

## Bedroom 4 and Bedroom 5

### Shared Bath – 8' x 6'

- 9-lite octagonal window
- Dual sink vanity with cabinet storage
- Shower with tile surround
- Hollywood lighting
- Tile floors

## Bedroom 5 / Potential Media

### Room – 17' x 16'

- 13' cathedral vaulted ceiling with exposed beams
- Four 12-lite windows with shades
- One 20-lite window
- 6-candle chandelier
- Built-in book shelving
- Carpet floors
- Two closets with hanging storage

## 3rd Floor Game Room / Potential

### Bedroom 6 – 16' x 16'

- 8' ceiling
- Three 8-lite windows
- Built-in cabinetry with drawers and book shelving
- Double door closet with clothing storage
- Access to storage room (14' x 11') with built-in shelving and additional storage closets
- Carpet flooring

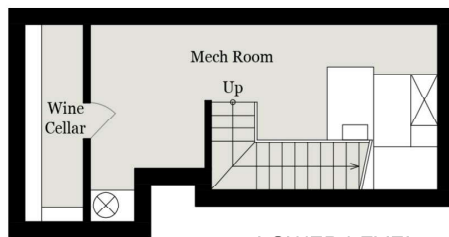
## 3rd Floor Bath – 10' x 4'

- 9-lite window
- Sink
- Bathtub
- Tile floors

# Floor Plans



MAIN LEVEL



LOWER LEVEL

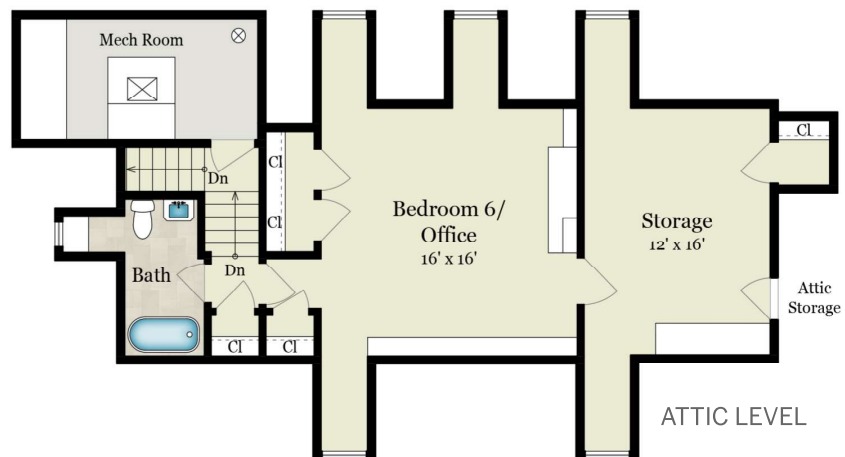


The measurements in the drawings provided are approximate and should be independently verified.

# Floor Plans



UPPER LEVEL

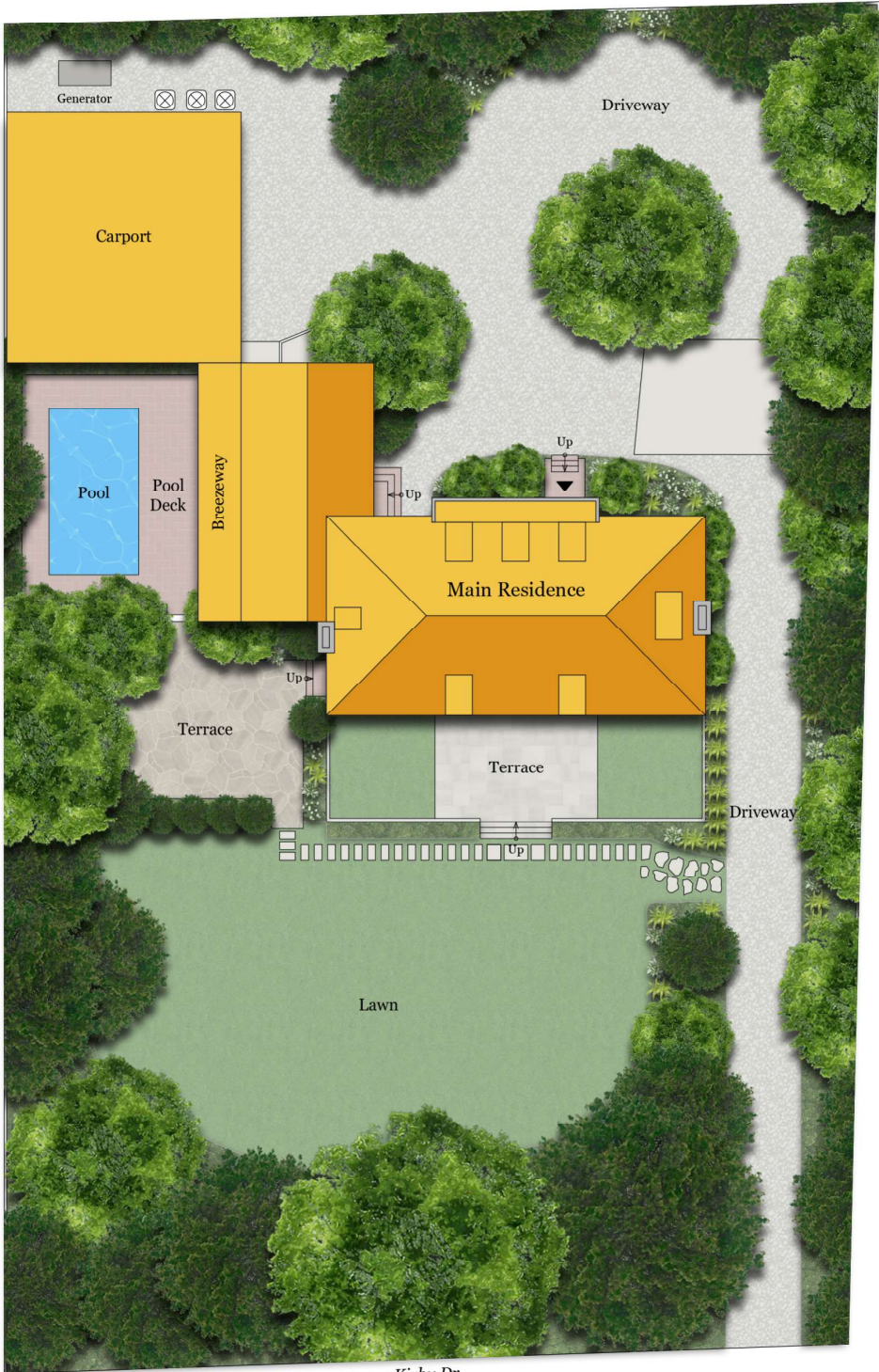


ATTIC LEVEL



The measurements in the drawings provided are approximate and should be independently verified.

# Site Plan



The measurements in the drawings provided are approximate and should be independently verified.