

* CITY ORDINANCES
 ** RESTRICTIVE COVENANTS
 *** BUILDER GUIDELINES
 () RECORD INFORMATION

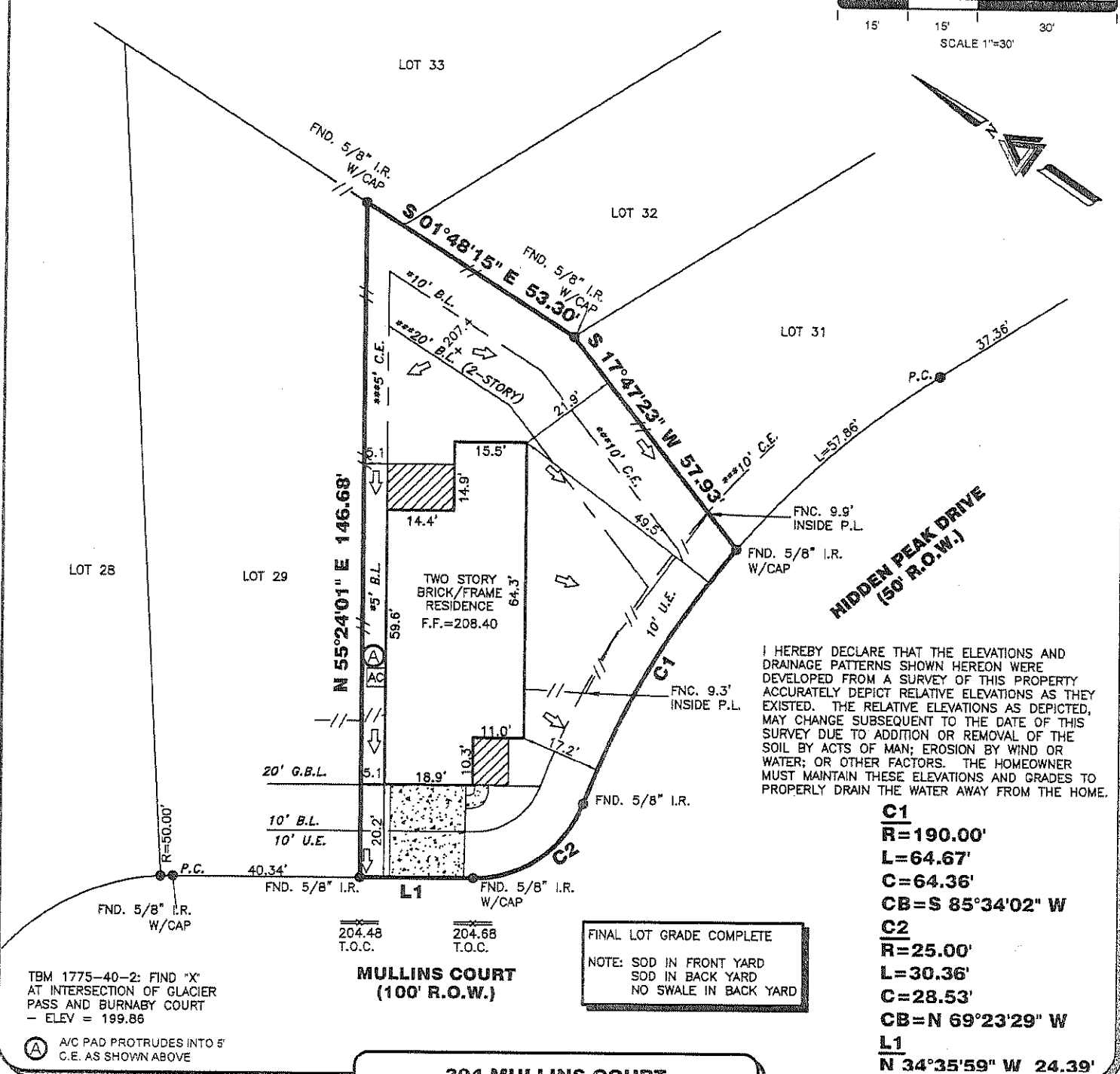
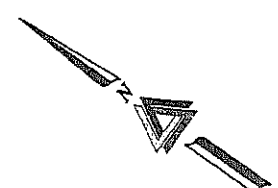
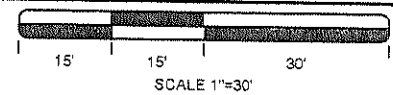
I.R. = IRON ROD
 I.P. = IRON PIPE
 P.L. = PROPERTY LINE
 U.E. = UTILITY EASEMENT

FND. = FOUND
 FNC. = FENCE
 C.E. = COVENANT ESMT.
 P.A.E. = PERMANENT ACCESS ESMT.
 W.S.E. = WATER SEWER EASEMENT

LEGEND
 M.U.E. = MUNICIPAL UTILITY ESMT.
 S.S.E. = SANITARY SEWER ESMT.
 W.L.E. = WATERLINE EASEMENT
 S.T.M.S.E. = STORM SEWER EASEMENT
 R.O.W. = RIGHT-OF-WAY

CONCRETE
 COVERED
 SOD
 BRICK
 A/C PAD
 ELEC. BOX
 UTIL. PED.
 MANHOLE
 WATER METER

IRON FENCE
 WIRE FENCE
 WOOD FENCE
 CHAIN LINK FENCE
 BUILDING LINE (B.L.)
 EASEMENT LINE
 AERIAL EASEMENT (A.E.)



I HEREBY DECLARE THAT THE ELEVATIONS AND DRAINAGE PATTERNS SHOWN HEREON WERE DEVELOPED FROM A SURVEY OF THIS PROPERTY ACCURATELY DEPICT RELATIVE ELEVATIONS AS THEY EXISTED. THE RELATIVE ELEVATIONS AS DEPICTED, MAY CHANGE SUBSEQUENT TO THE DATE OF THIS SURVEY DUE TO ADDITION OR REMOVAL OF THE SOIL BY ACTS OF MAN; EROSION BY WIND OR WATER; OR OTHER FACTORS. THE HOMEOWNER MUST MAINTAIN THESE ELEVATIONS AND GRADES TO PROPERLY DRAIN THE WATER AWAY FROM THE HOME.

- C1**
R=190.00'
L=64.67'
C=64.36'
CB=S 85°34'02" W
- C2**
R=25.00'
L=30.36'
C=28.53'
CB=N 69°23'29" W
- L1**
N 34°35'59" W 24.39'

FINAL LOT GRADE COMPLETE
 NOTE: SOD IN FRONT YARD
 SOD IN BACK YARD
 NO SWALE IN BACK YARD

TBM 1775-40-2: FIND 'X' AT INTERSECTION OF GLACIER PASS AND BURNABY COURT - ELEV = 199.86
 A/C PAD PROTRUDES INTO 5' C.E. AS SHOWN ABOVE

MULLINS COURT (100' R.O.W.)
 204.48 T.O.C.
 204.68 T.O.C.

304 MULLINS COURT

PROPERTY INFORMATION

LOT 30 BLOCK 1

SUBDIVISION: WOODFOREST SECTION 79

RECORDING INFO: CAB. Z, SHT. 8520, MAP RECORDS MONTGOMERY COUNTY, TEXAS

BORROWER: JACOB GRIFFITH AND KARA GRIFFITH

TITLE CO. CHICAGO TITLE/EXECUTIVE TITLE CO., LTD.

G.F.# ETH2304205 G.F. DATE: 06-28-23

SURVEYED FOR: PERRY HOMES, LLC

DRAWING INFORMATION

TRI-TECH JOB NO: Y38465-23

CLIENT JOB NO: N/A

DRAWN BY: PV

BEARING BASE: REFERRED TO PLAT NORTH

FIELD DATE: 05-10-23

FLOOD INFORMATION

F.I.R.M. NO: 48339C PANEL: 0375G

REVISED DATE: 08-18-14 ZONE: "X"

FLOOD INFORMATION PROVIDED HEREON IS BASED ON SCALING THE LOCATION OF THE SUBJECT TRACT ON THE FLOOD INSURANCE RATE MAPS. THE INFORMATION SHOULD BE USED TO DETERMINE FLOOD INSURANCE RATES ONLY AND IS NOT INTENDED TO IDENTIFY SPECIFIC FLOODING CONDITIONS. WE ARE NOT RESPONSIBLE FOR THE F.I.R.M.'S ACCURACY. FLOOD INFORMATION IS SUBJECT TO LETTER OF MAP CHANGES.

NOTES:

ALL EASEMENTS AND BUILDING LINES SHOWN ARE PER THE RECORDED PLAT UNLESS OTHERWISE NOTED.

RESTRICTIVE COVENANTS AND EASEMENTS AS DEFINED PER CAB. Z, SHT. 8520, H.R. & C. FILE NOS. 2008-091292, 2008-116357, 2011087821, 2011103268, 201103262, 2011103264, 2011103265, 2011103266, 201103267, 201103268, 201103269, 201103270, 201103271, 201103272, 201103273, 201103274, 201103275, 201103276, 201103277, 201103278, 201103279, 201103280, 201103281, 201103282, 201103283, 201103284, 201103285, 201103286, 201103287, 201103288, 201103289, 201103290, 201103291, 201103292, 201103293, 201103294, 201103295, 201103296, 201103297, 201103298, 201103299, 201103300, 201103301, 201103302, 201103303, 201103304, 201103305, 201103306, 201103307, 201103308, 201103309, 201103310, 201103311, 201103312, 201103313, 201103314, 201103315, 201103316, 201103317, 201103318, 201103319, 201103320, 201103321, 201103322, 201103323, 201103324, 201103325, 201103326, 201103327, 201103328, 201103329, 201103330, 201103331, 201103332, 201103333, 201103334, 201103335, 201103336, 201103337, 201103338, 201103339, 201103340, 201103341, 201103342, 201103343, 201103344, 201103345, 201103346, 201103347, 201103348, 201103349, 201103350, 201103351, 201103352, 201103353, 201103354, 201103355, 201103356, 201103357, 201103358, 201103359, 201103360, 201103361, 201103362, 201103363, 201103364, 201103365, 201103366, 201103367, 201103368, 201103369, 201103370, 201103371, 201103372, 201103373, 201103374, 201103375, 201103376, 201103377, 201103378, 201103379, 201103380, 201103381, 201103382, 201103383, 201103384, 201103385, 201103386, 201103387, 201103388, 201103389, 201103390, 201103391, 201103392, 201103393, 201103394, 201103395, 201103396, 201103397, 201103398, 201103399, 201103400, 201103401, 201103402, 201103403, 201103404, 201103405, 201103406, 201103407, 201103408, 201103409, 201103410, 201103411, 201103412, 201103413, 201103414, 201103415, 201103416, 201103417, 201103418, 201103419, 201103420, 201103421, 201103422, 201103423, 201103424, 201103425, 201103426, 201103427, 201103428, 201103429, 201103430, 201103431, 201103432, 201103433, 201103434, 201103435, 201103436, 201103437, 201103438, 201103439, 201103440, 201103441, 201103442, 201103443, 201103444, 201103445, 201103446, 201103447, 201103448, 201103449, 201103450, 201103451, 201103452, 201103453, 201103454, 201103455, 201103456, 201103457, 201103458, 201103459, 201103460, 201103461, 201103462, 201103463, 201103464, 201103465, 201103466, 201103467, 201103468, 201103469, 201103470, 201103471, 201103472, 201103473, 201103474, 201103475, 201103476, 201103477, 201103478, 201103479, 201103480, 201103481, 201103482, 201103483, 201103484, 201103485, 201103486, 201103487, 201103488, 201103489, 201103490, 201103491, 201103492, 201103493, 201103494, 201103495, 201103496, 201103497, 201103498, 201103499, 201103500, 201103501, 201103502, 201103503, 201103504, 201103505, 201103506, 201103507, 201103508, 201103509, 201103510, 201103511, 201103512, 201103513, 201103514, 201103515, 201103516, 201103517, 201103518, 201103519, 201103520, 201103521, 201103522, 201103523, 201103524, 201103525, 201103526, 201103527, 201103528, 201103529, 201103530, 201103531, 201103532, 201103533, 201103534, 201103535, 201103536, 201103537, 201103538, 201103539, 201103540, 201103541, 201103542, 201103543, 201103544, 201103545, 201103546, 201103547, 201103548, 201103549, 201103550, 201103551, 201103552, 201103553, 201103554, 201103555, 201103556, 201103557, 201103558, 201103559, 201103560, 201103561, 201103562, 201103563, 201103564, 201103565, 201103566, 201103567, 201103568, 201103569, 201103570, 201103571, 201103572, 201103573, 201103574, 201103575, 201103576, 201103577, 201103578, 201103579, 201103580, 201103581, 201103582, 201103583, 201103584, 201103585, 201103586, 201103587, 201103588, 201103589, 201103590, 201103591, 201103592, 201103593, 201103594, 201103595, 201103596, 201103597, 201103598, 201103599, 201103600, 201103601, 201103602, 201103603, 201103604, 201103605, 201103606, 201103607, 201103608, 201103609, 201103610, 201103611, 201103612, 201103613, 201103614, 201103615, 201103616, 201103617, 201103618, 201103619, 201103620, 201103621, 201103622, 201103623, 201103624, 201103625, 201103626, 201103627, 201103628, 201103629, 201103630, 201103631, 201103632, 201103633, 201103634, 201103635, 201103636, 201103637, 201103638, 201103639, 201103640, 201103641, 201103642, 201103643, 201103644, 201103645, 201103646, 201103647, 201103648, 201103649, 201103650, 201103651, 201103652, 201103653, 201103654, 201103655, 201103656, 201103657, 201103658, 201103659, 201103660, 201103661, 201103662, 201103663, 201103664, 201103665, 201103666, 201103667, 201103668, 201103669, 201103670, 201103671, 201103672, 201103673, 201103674, 201103675, 201103676, 201103677, 201103678, 201103679, 201103680, 201103681, 201103682, 201103683, 201103684, 201103685, 201103686, 201103687, 201103688, 201103689, 201103690, 201103691, 201103692, 201103693, 201103694, 201103695, 201103696, 201103697, 201103698, 201103699, 201103700, 201103701, 201103702, 201103703, 201103704, 201103705, 201103706, 201103707, 201103708, 201103709, 201103710, 201103711, 201103712, 201103713, 201103714, 201103715, 201103716, 201103717, 201103718, 201103719, 201103720, 201103721, 201103722, 201103723, 201103724, 201103725, 201103726, 201103727, 201103728, 201103729, 201103730, 201103731, 201103732, 201103733, 201103734, 201103735, 201103736, 201103737, 201103738, 201103739, 201103740, 201103741, 201103742, 201103743, 201103744, 201103745, 201103746, 201103747, 201103748, 201103749, 201103750, 201103751, 201103752, 201103753, 201103754, 201103755, 201103756, 201103757, 201103758, 201103759, 201103760, 201103761, 201103762, 201103763, 201103764, 201103765, 201103766, 201103767, 201103768, 201103769, 201103770, 201103771, 201103772, 201103773, 201103774, 201103775, 201103776, 201103777, 201103778, 201103779, 201103780, 201103781, 201103782, 201103783, 201103784, 201103785, 201103786, 201103787, 201103788, 201103789, 201103790, 201103791, 201103792, 201103793, 201103794, 201103795, 201103796, 201103797, 201103798, 201103799, 201103800, 201103801, 201103802, 201103803, 201103804, 201103805, 201103806, 201103807, 201103808, 201103809, 201103810, 201103811, 201103812, 201103813, 201103814, 201103815, 201103816, 201103817, 201103818, 201103819, 201103820, 201103821, 201103822, 201103823, 201103824, 201103825, 201103826, 201103827, 201103828, 201103829, 201103830, 201103831, 201103832, 201103833, 201103834, 201103835, 201103836, 201103837, 201103838, 201103839, 201103840, 201103841, 201103842, 201103843, 201103844, 201103845, 201103846, 201103847, 201103848, 201103849, 201103850, 201103851, 201103852, 201103853, 201103854, 201103855, 201103856, 201103857, 201103858, 201103859, 201103860, 201103861, 201103862, 201103863, 201103864, 201103865, 201103866, 201103867, 201103868, 201103869, 201103870, 201103871, 201103872, 201103873, 201103874, 201103875, 201103876, 201103877, 201103878, 201103879, 201103880, 201103881, 201103882, 201103883, 201103884, 201103885, 201103886, 201103887, 201103888, 201103889, 201103890, 201103891, 201103892, 201103893, 201103894, 201103895, 201103896, 201103897, 201103898, 201103899, 201103900, 201103901, 201103902, 201103903, 201103904, 201103905, 201103906, 201103907, 201103908, 201103909, 201103910, 201103911, 201103912, 201103913, 201103914, 201103915, 201103916, 201103917, 201103918, 201103919, 201103920, 201103921, 201103922, 201103923, 201103924, 201103925, 201103926, 201103927, 201103928, 201103929, 201103930, 201103931, 201103932, 201103933, 201103934, 201103935, 201103936, 201103937, 201103938, 201103939, 201103940, 201103941, 201103942, 201103943, 201103944, 201103945, 201103946, 201103947, 201103948, 201103949, 201103950, 201103951, 201103952, 201103953, 201103954, 201103955, 201103956, 201103957, 201103958, 201103959, 201103960, 201103961, 201103962, 201103963, 201103964, 201103965, 201103966, 201103967, 201103968, 201103969, 201103970, 201103971, 201103972, 201103973, 201103974, 201103975, 201103976, 201103977, 201103978, 201103979, 201103980, 201103981, 201103982, 201103983, 201103984, 201103985, 201103986, 201103987, 201103988, 201103989, 201103990, 201103991, 201103992, 201103993, 201103994, 201103995, 201103996, 201103997, 201103998, 201103999, 201104000, 201104001, 201104002, 201104003, 201104004, 201104005, 201104006, 201104007, 201104008, 201104009, 201104010, 201104011, 201104012, 201104013, 201104014, 201104015, 201104016, 201104017, 201104018, 201104019, 201104020, 201104021, 201104022, 201104023, 201104024, 201104025, 201104026, 201104027, 201104028, 201104029, 201104030, 201104031, 201104032, 201104033, 201104034, 201104035, 201104036, 201104037, 201104038, 201104039, 201104040, 201104041, 201104042, 201104043, 201104044, 201104045, 201104046, 201104047, 201104048, 201104049, 201104050, 201104051, 201104052, 201104053, 201104054, 201104055, 201104056, 201104057, 201104058, 201104059, 201104060, 201104061, 201104062, 201104063, 201104064, 201104065, 201104066, 201104067, 201104068, 201104069, 201104070, 201104071, 201104072, 201104073, 201104074, 201104075, 201104076, 201104077, 201104078, 201104079, 201104080, 201104081, 201104082, 201104083, 201104084, 201104085, 201104086, 201104087, 201104088, 201104089, 201104090, 201104091, 201104092, 201104093, 201104094, 201104095, 201104096, 201104097, 201104098, 201104099, 201104100, 201104101, 201104102, 201104103, 201104104, 201104105, 201104106, 201104107, 201104108, 201104109, 201104110, 201104111, 201104112, 201104113, 201104114, 201104115, 201104116, 201104117, 201104118, 201104119, 201104120, 201104121, 201104122, 201104123, 201104124, 201104125, 201104126, 201104127, 201104128, 201104129, 201104130, 201104131, 201104132, 201104133, 201104134, 201104135, 201104136, 201104137, 201104138, 201104139, 201104140, 201104141, 201104142, 201104143, 201104144, 201104145, 201104146, 201104147, 201104148, 201104149, 201104150, 201104151, 201104152, 201104153, 201104154, 201104155, 201104156, 201104157, 201104158, 201104159, 201104160, 201104161, 201104162, 201104163, 201104164, 201104165, 201104166, 201104167, 201104168, 201104169, 201104170, 201104171, 201104172, 201104173, 201104174, 201104175, 201104176, 201104177, 201104178, 201104179, 201104180, 201104181, 201104182, 201104183, 201104184, 201104185, 201104186, 201104187, 201104188, 201104189, 201104190, 201104191, 201104192, 201104193, 20110419