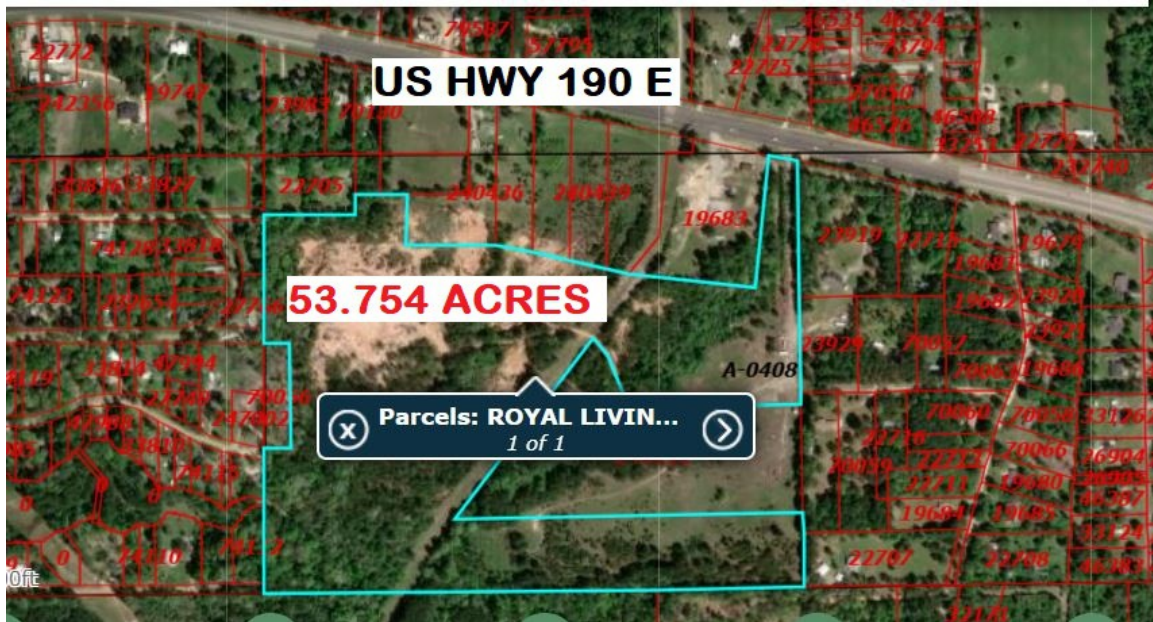


# SOUTHWEST PROPERTIES

COMMERCIAL & RESIDENTIAL REAL ESTATE



53.754 ACRES AT 4116 US HWY 190E, LIVINGSTON. OWNER CAN FINANCE. LISTED AT \$30K/ACRE



WALLACE EVERITT, BROKER  
281-375-5575

[INFO@SOUTHWESTPROPERTIES.US](mailto:INFO@SOUTHWESTPROPERTIES.US)  
[WWW.SOUTHWESTPROPERTIES.US](http://WWW.SOUTHWESTPROPERTIES.US)