



1881 N/E Clayton Features & Highlights



The Cabin

- 2 Beds, 2.5 Baths
- Interior stair rails are black walnut
- Front porch rail accents from N Carolina wood
- Beams made from treated reclaimed wood
- Pier & Beam Foundation w/slab underneath for stability & easy access



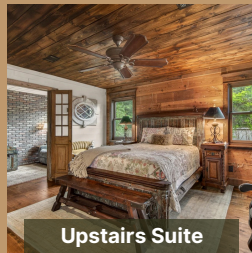
Downstairs Living

- Large Butler's Pantry and utility room combination
- Formal Living Room
- Impressive Great Room
- Two beautiful fireplaces
- Kitchen: custom cabinetry with pull-out drawers



Downstairs Primary Suite

- Private entrance and porch
- Shiplap is reclaimed wood from Texas homes
- Luxurious bathroom suite
- Double Vanities
- Clawfoot Soaking Tub
- Walk In Shower



Upstairs Suite

- Reclaimed wood ceilings
- TV room w/brick accent wall, separated by French doors
- Full ensuite bath with 2 sinks, tile shower, Travertine flooring
- Custom Walk-In closets



Outdoor Living

- Pond with large pier
- Expansive covered patio off the back of the home
- Additional covered pavilion ideal for entertaining
- Storage shed currently used as the "cat house"



Garage w/Studio

- Hallway walls to garage crafted from reclaimed fence posts
- Climate-controlled two-car attached garage
- Full bathroom with tiled shower
- Two spacious storage rooms & Workshop Area
- Attached kennels and dog run (heated and cooled)
- Full upstairs flex space for office, gym, guest quarters, or studio



New Shop

- Built in 2026
- Double-pane windows
- Two large shop doors
- Covered patio
- Space for living quarters, office, or custom use
- Large workshop area