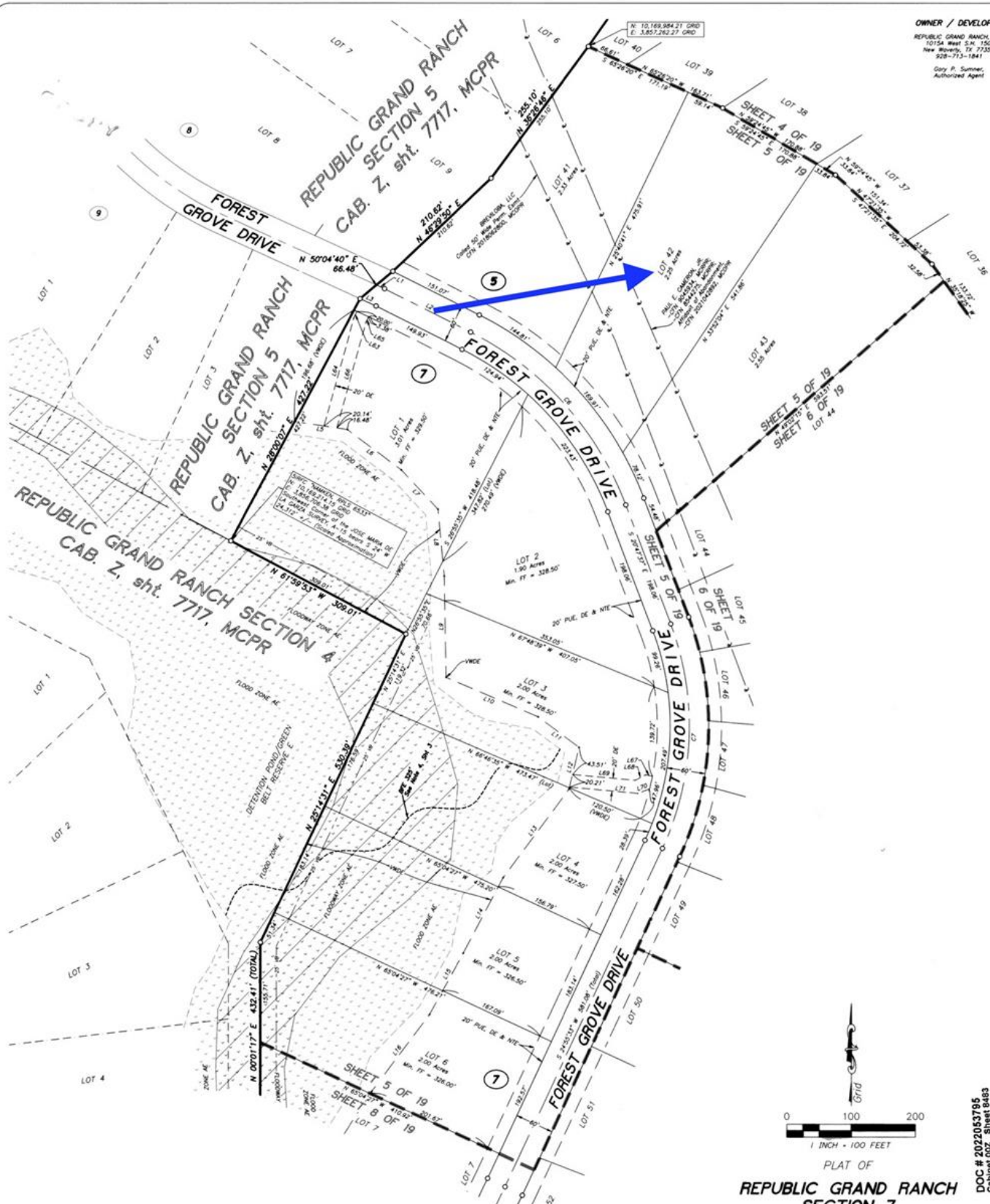


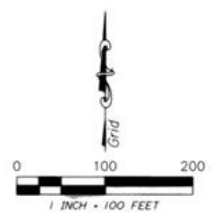
OWNER / DEVELOPER
 REPUBLIC GRAND RANCH, LLC
 10158 West S.H. 150
 New Beverly, TX 77358
 928-713-1841
 Gary R. Sumner,
 Authorized Agent



- LEGEND**
- ⊙ Block Number
 - 3/4" Found Iron Pipe, size and cap as noted
 - 1/2" Found Iron Rod, size and cap as noted
 - Found/Set 5/8" Iron Rod with 1-3/4" blue plastic cap mid.
 - MICHAEL A. NAMKEN RPLD 65531, UNLESS otherwise noted
 - ⊙ Point for Corner
 - ▨ Floodway Areas in Zone AE
 - ▨ Flood Zone AE
 - CFN Clerk's File Number
 - MCOR Montgomery County Deed Records
 - MCOPR Montgomery County Official Public Records
 - MOPRR Montgomery County Real Property Records
 - MOPR Montgomery County Plat Records
 - Min. FF Minimum Finished Floor Elevation
 - P.U.C. DE & NTE Public Utility Easement, Drainage Easement & Nature Trail Easement
 - VWDE Variable Width Private Drainage Easement
 - VB Vegetative Buffer

INDIVIDUAL SHEETS INDEX

1	Sheet Number Layout	11	Block 5, 6 and 7
2	Certifications, Dedications and Vicinity Map	12	Blocks 4 and 5
3	Notes, Line and Curve Tables	13	Block 4
4	Blocks 4 and 5	14	Blocks 5 and 6
5	Blocks 5 and 7	15	Blocks 5 and 6
6	Block 5	16	Blocks 4, 5 and 6
7	Block 4	17	Blocks 2 and 3
8	Blocks 5 and 7	18	Blocks 1 and 6, Site Bench Mark
9	Blocks 4 and 5	19	Block 6
10	Block 4		



PLAT OF
REPUBLIC GRAND RANCH SECTION 7
 CONTAINING 7 BLOCKS, 220 LOTS, 3 RESERVES

A SUBDIVISION CONTAINING 456.83 ACRES OF LAND, OUT OF THE RESIDUE OF 4818.84 ACRE REPUBLIC GRAND RANCH, LLC TRACT, CLERK'S FILE No. 201913827, MONTGOMERY COUNTY OFFICIAL PUBLIC RECORDS
JOSE MARIA DE LA GARZA SURVEY, A-15
 MONTGOMERY COUNTY, TEXAS

FEBRUARY 2022
 Namken, Inc.
 P.O. Box 1058, New Beverly, TX 77358
 TSPR19 Form No. 1029-0090
 936-661-3325

DOC # 2022053795
 Cabinet 02Z Sheet 06a3