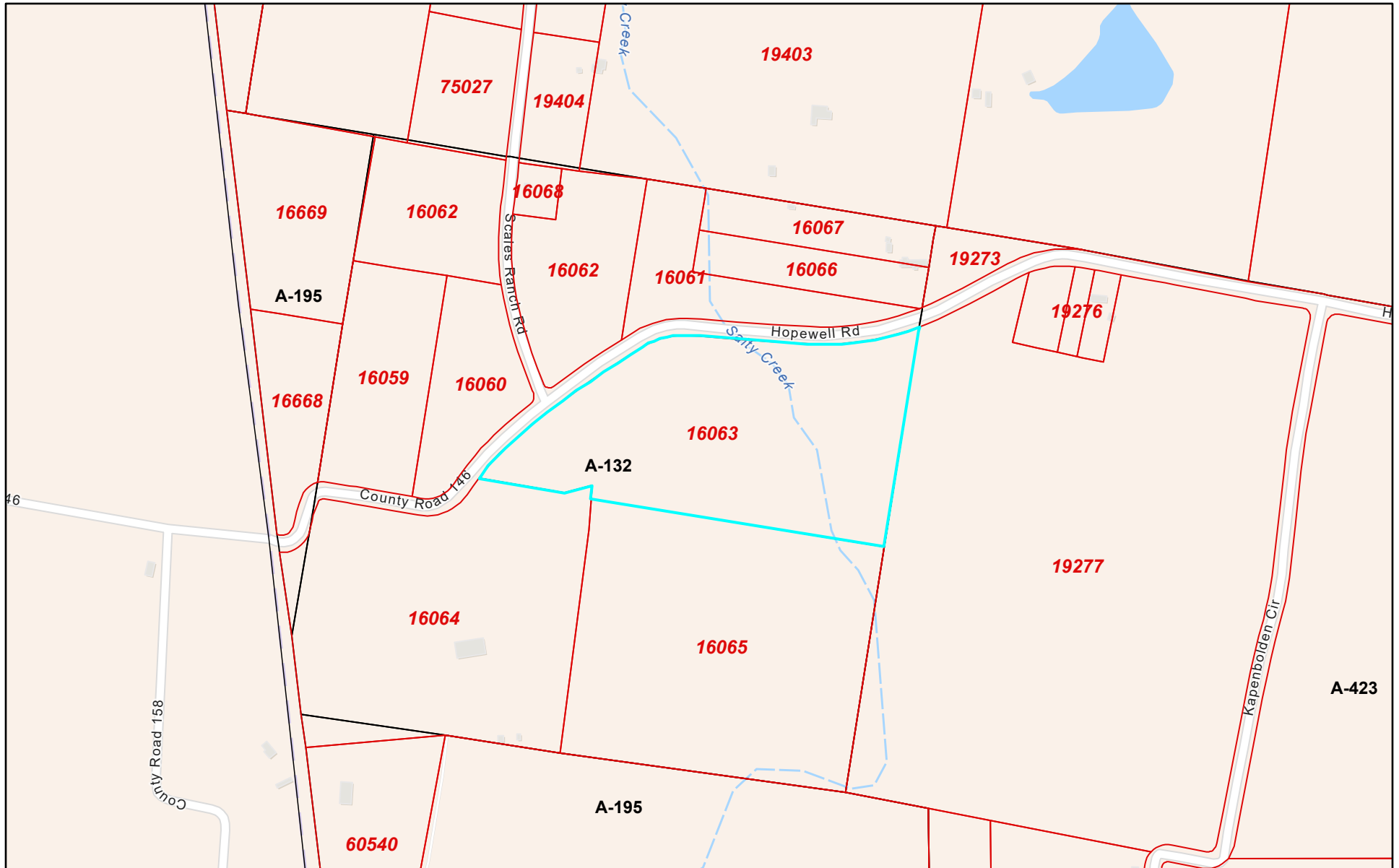

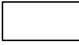
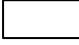
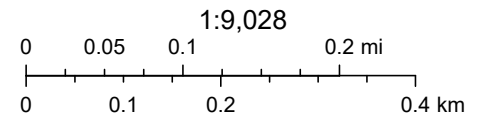


# Walker CAD Web Map



4/16/2026, 6:48:33 AM

-  Parcels
-  Texas Counties
-  Abstracts



Sources: Esri, TomTom, Garmin, FAO, NOAA, USGS, © OpenStreetMap contributors, and the GIS User Community

Walker County Appraisal District, BIS Consulting - [www.bisconsulting.com](http://www.bisconsulting.com)

Disclaimer: This product is for informational purposes only and has not been prepared for or be suitable for legal, engineering, or surveying purposes. It does not represent an on-the-ground survey and represents only the approximate relative location of boundaries.