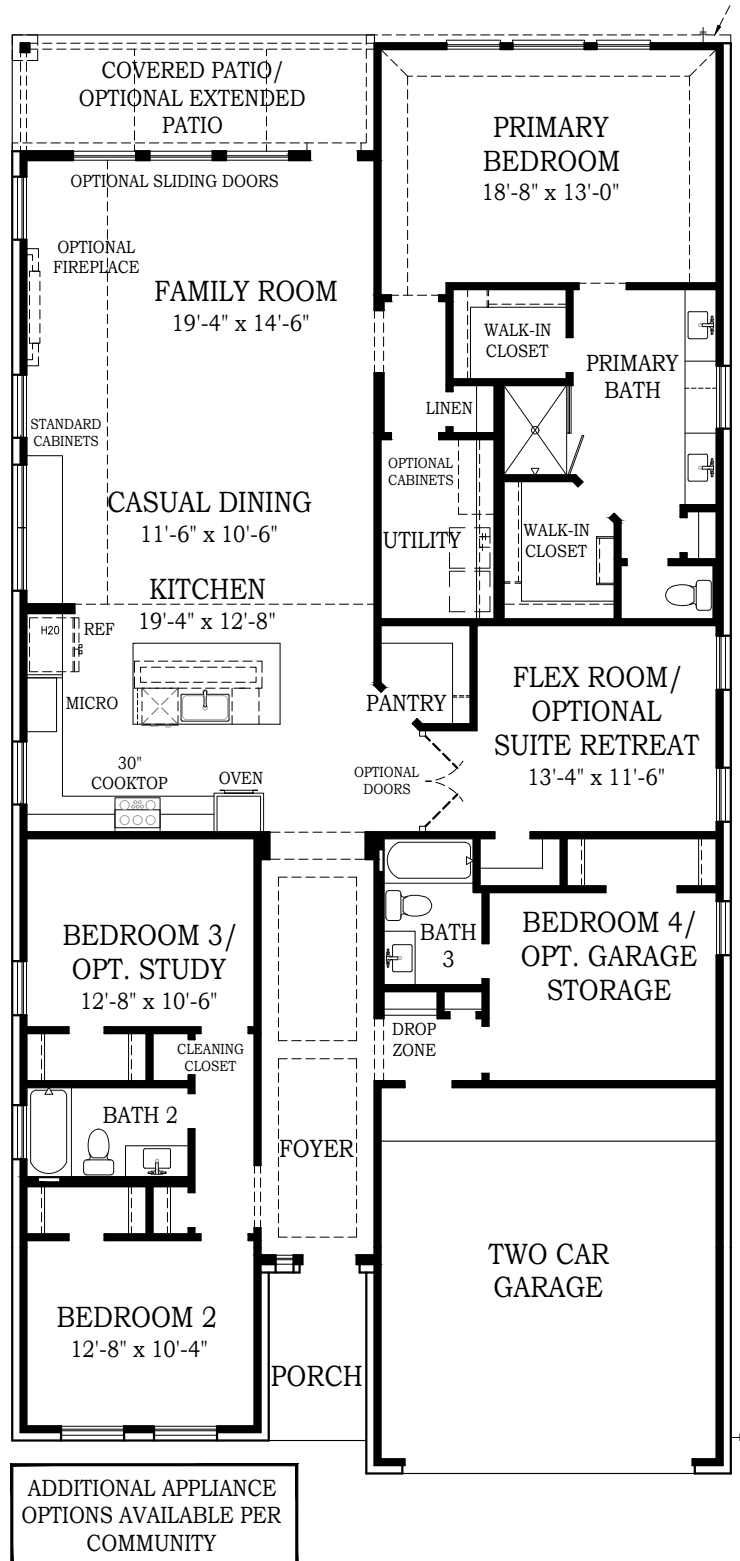




LAUREN

CHESMAR.com

Plan 253840 | 2538 Square Footage | 4 Bedrooms | 3 Baths | 2-Car Garage

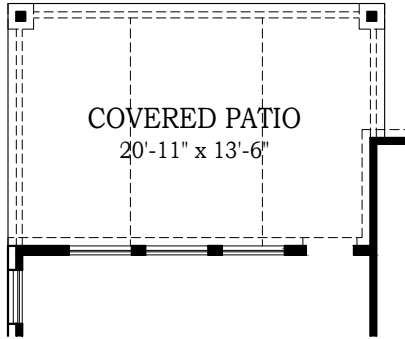




LAUREN

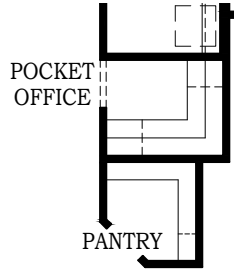
CHESMAR.com

Plan 253840 | 2538 Square Footage | 4 Bedrooms | 3 Baths | 2-Car Garage



COVERED PATIO
20'-11" x 13'-6"

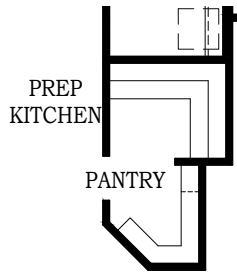
OPTIONAL
EXTENDED PATIO



POCKET
OFFICE

PANTRY

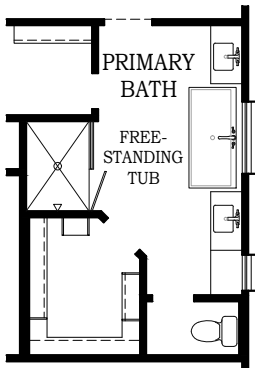
OPTIONAL POCKET
OFFICE AT PANTRY



PREP
KITCHEN

PANTRY

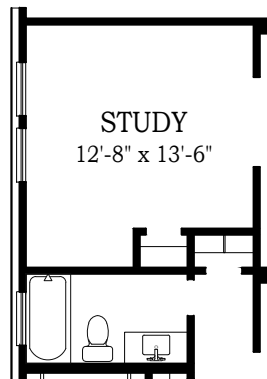
OPTIONAL PREP
KITCHEN AT PANTRY



PRIMARY
BATH

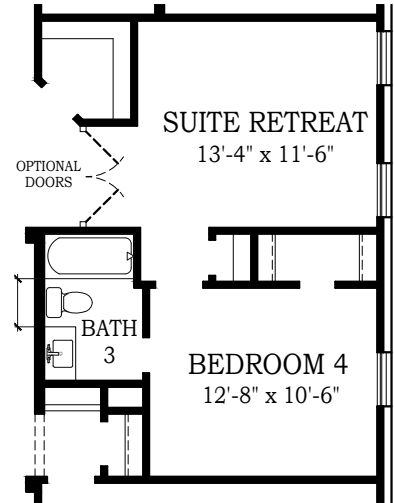
FREE-
STANDING
TUB

OPTIONAL
FREESTANDING TUB
AT PRIMARY BATH



STUDY
12'-8" x 13'-6"

OPTIONAL STUDY AT
BEDROOM 3



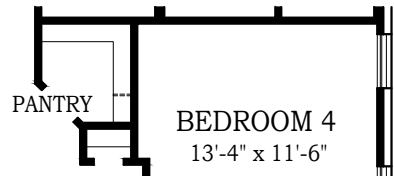
SUITE RETREAT
13'-4" x 11'-6"

OPTIONAL
DOORS

BATH
3

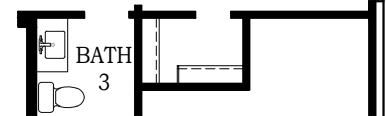
BEDROOM 4
12'-8" x 10'-6"

OPTIONAL SUITE RETREAT
AT FLEX ROOM



PANTRY

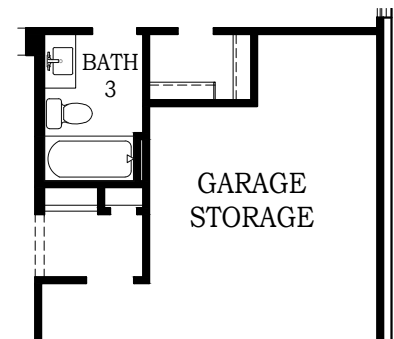
BEDROOM 4
13'-4" x 11'-6"



BATH
3

OPTIONAL BEDROOM 4
AT FLEX ROOM

(WITH GARAGE STORAGE OPTION ONLY)



BATH
3

GARAGE
STORAGE

OPTIONAL GARAGE
STORAGE AT BEDROOM 4





LAUREN

CHESMAR.com

Plan 253840 | 2538 Square Footage | 4 Bedrooms | 3 Baths | 2-Car Garage



FRONT ELEVATION 'A1'



FRONT ELEVATION 'A1'
STONE OPTION



FRONT ELEVATION 'A1'
FULL BRICK OPTION



FRONT ELEVATION 'B1'



Square footage and room dimensions are approximate and may vary per elevation. Window placement, roof line and porches may also vary by elevation. Plans, features, prices and availability are subject to change without notice. 8/12/24

**CHESMAR
HOMES**
Setting a Higher Standard