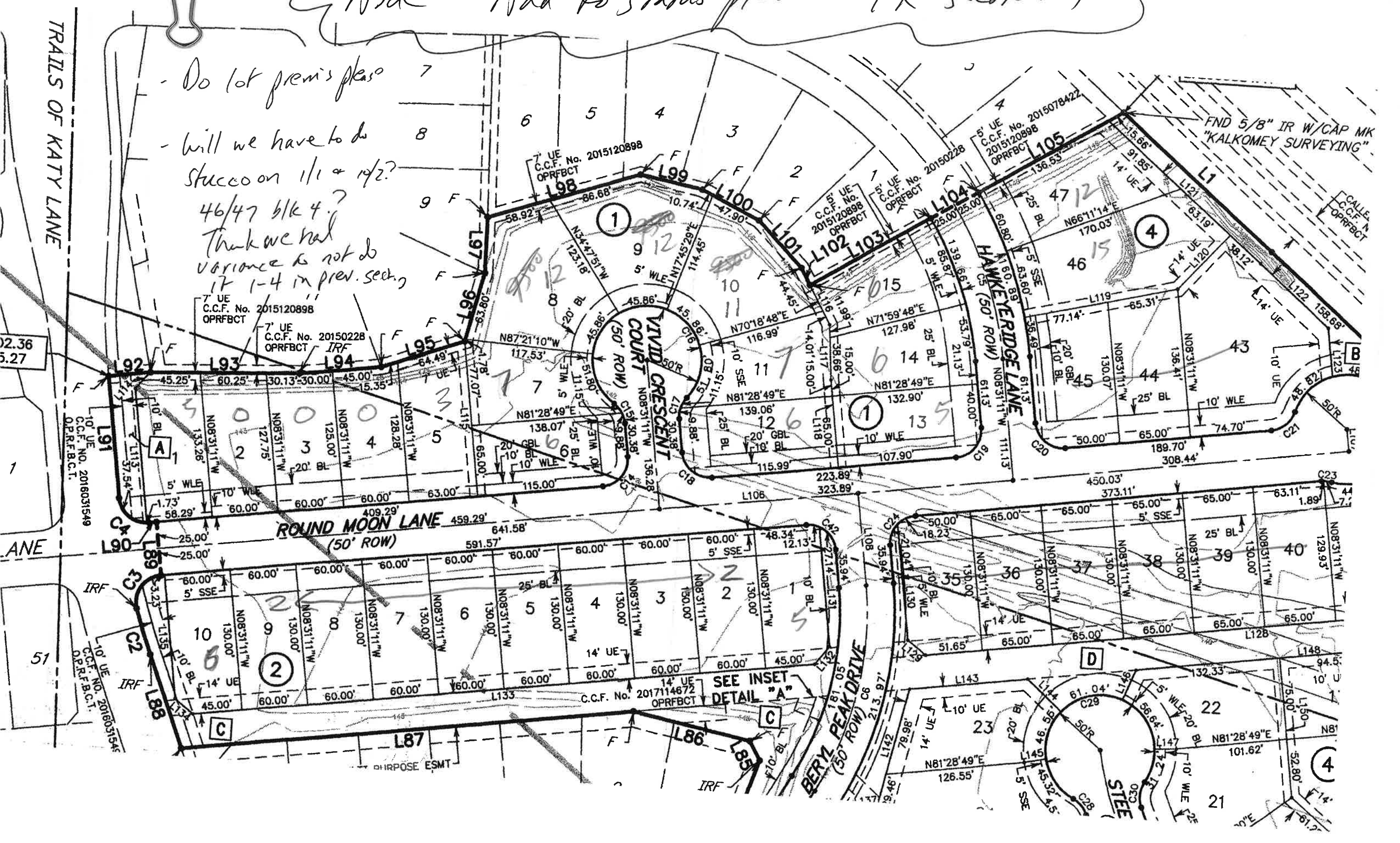


G Aid - Add to status please - TK section 4

- Do lot premises
- Will we have to do
Stucco on 1/1 & 1/2?
46/47 blk 4?
Think we had
variance to not do
17 1-4 in prev. sect.



7' UE
C.C.F. No. 2015120898
OPRFBCT

7' UE
C.C.F. No. 20150228
OPRFBCT

7' UE
C.C.F. No. 2015120898
OPRFBCT

5' UE
C.C.F. No. 2015120898
OPRFBCT

5' UE
C.C.F. No. 2015078422
C.C.F. No. 2015120898
OPRFBCT

10' UE
C.C.F. No. 2016031549
OPRFBCT

10' UE
C.C.F. No. 2016031549
OPRFBCT

14' UE
C.C.F. No. 2017114672
OPRFBCT

FND 5/8" IR W/CAP MK
"KALKOMEY SURVEYING"

CALLE
C.C.F. No.
OPRFBCT

SEE INSET
DETAIL "A"

DIRPOSE ESMT