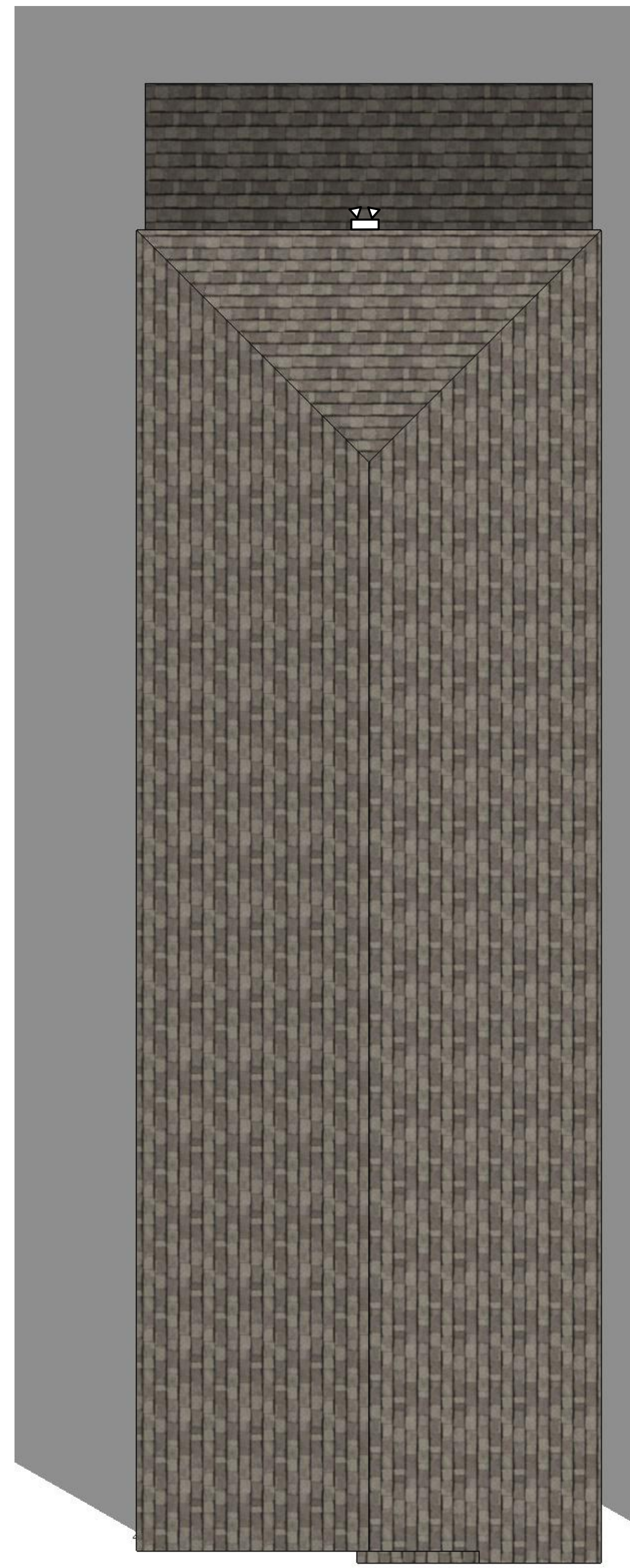
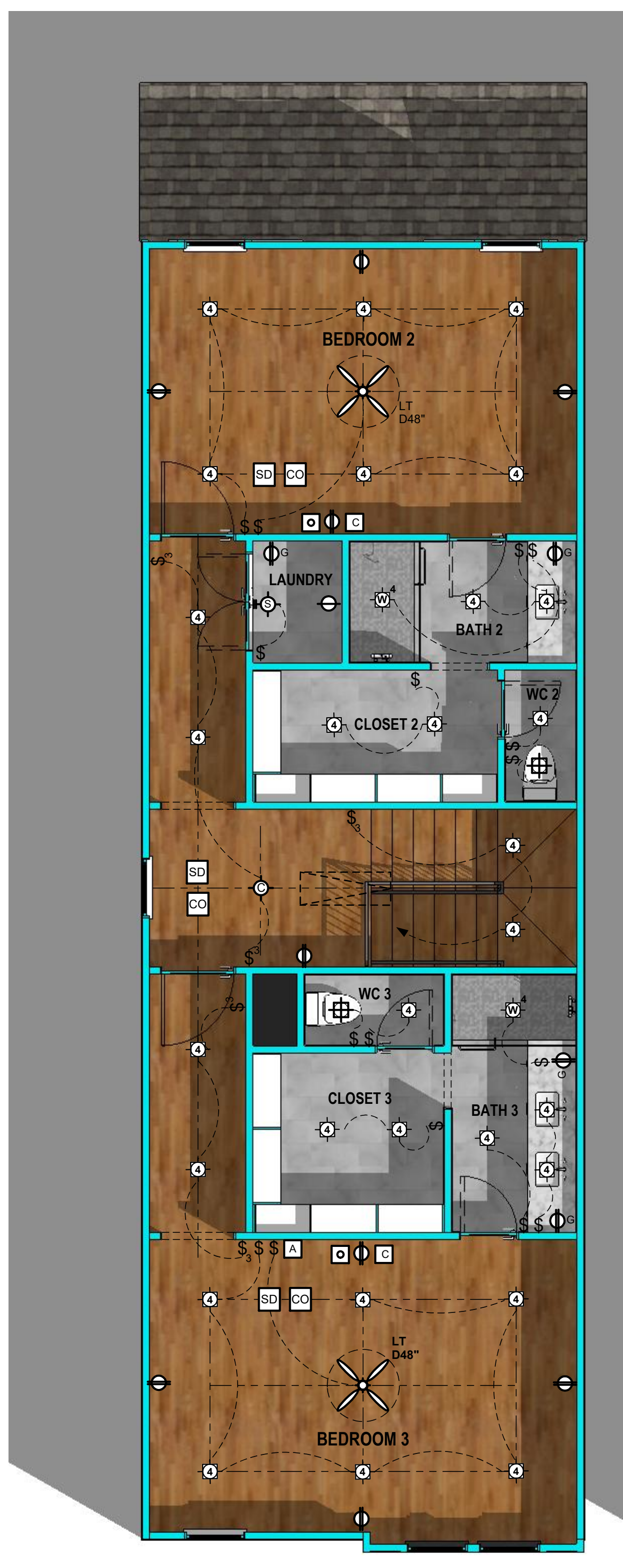


# LIGHTING LEGEND

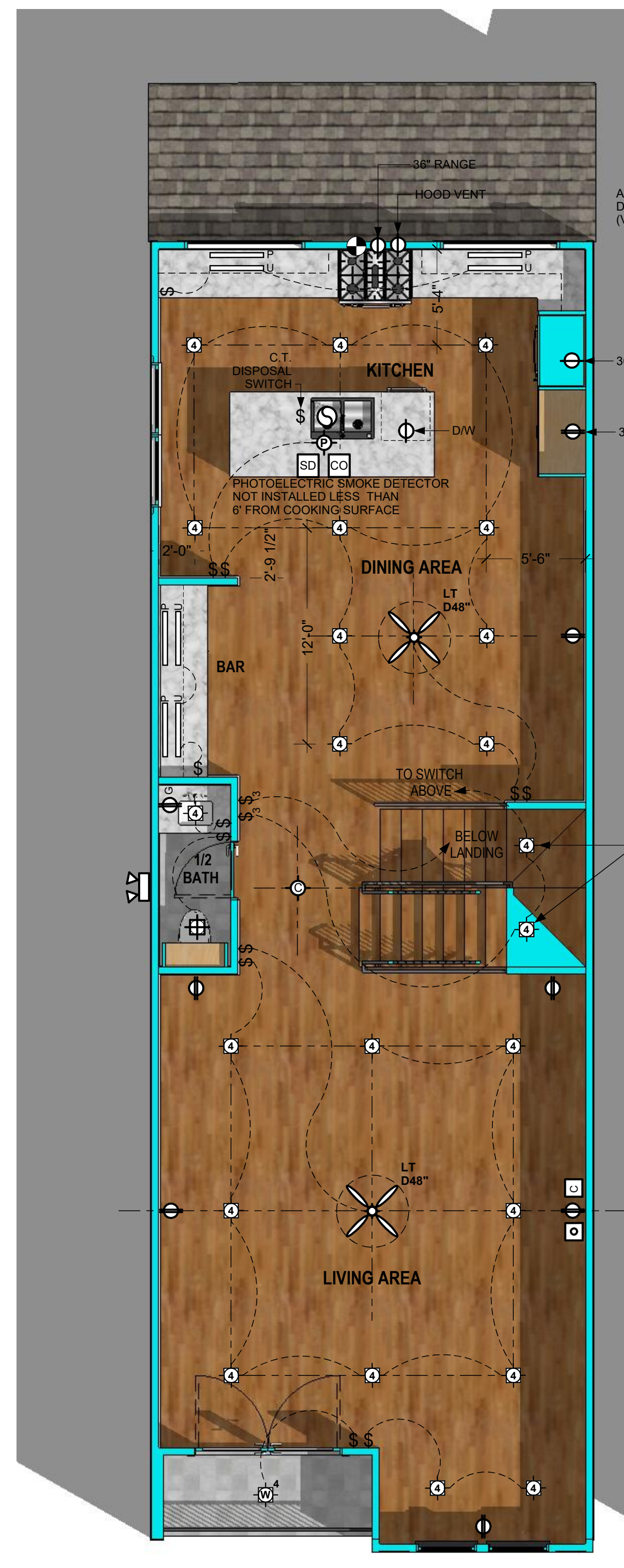
	PENDANT LIGHT FIXTURE		ADJUSTABLE #\"/>
--	-----------------------	--	------------------



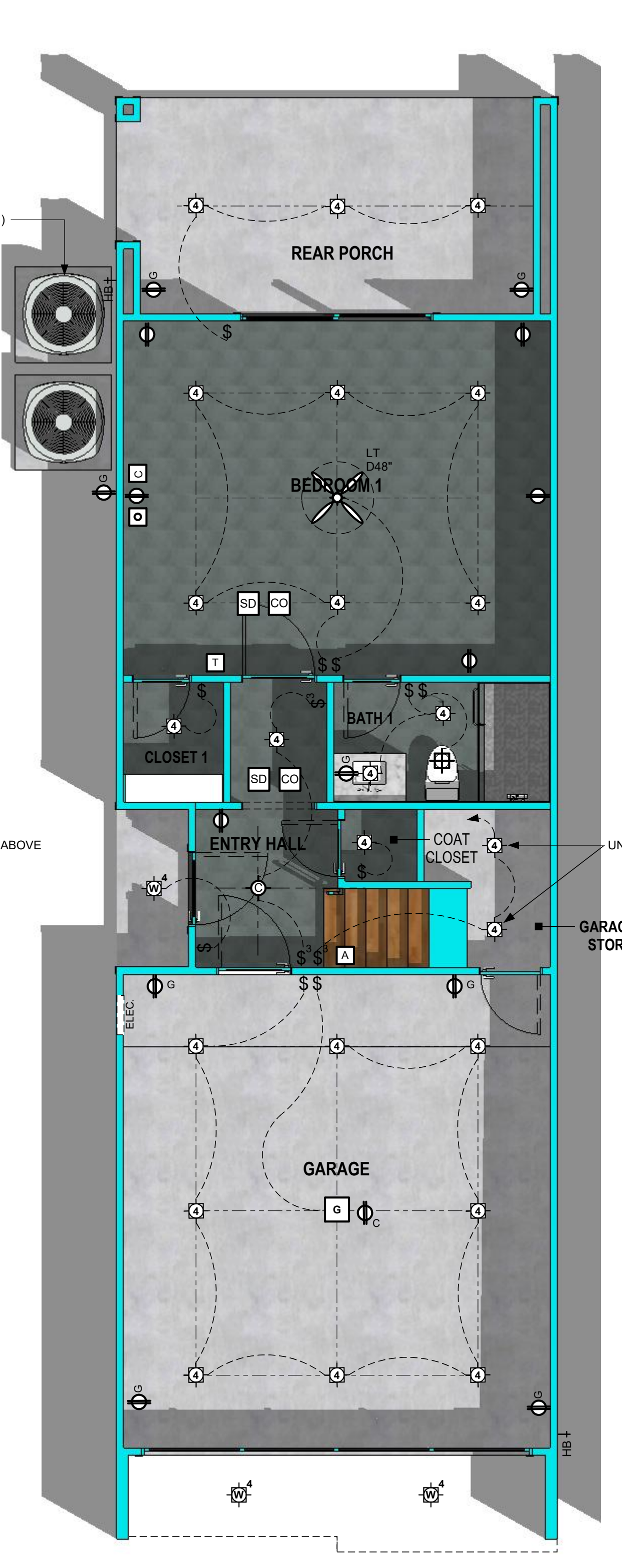
13 Roof Plan  
A2.6 1/4" = 1'-0"



9 Third Floor Plan  
A2.6 1/4" = 1'-0"



5 Second Floor Plan  
A2.6 1/4" = 1'-0"



1 First Floor Plan  
A2.6 1/4" = 1'-0"

- NOTE:
1. SMOKE DETECTORS REQUIRE 110V CONNECTION TO HOUSE WIRING AND BATTERY BACKUP. MULTIPLE UNITS SHALL BE INTERCONNECTED TO ACTIVATE ALL ALARMS. CONSULT MANUF. RECOMMENDATIONS FOR DISTANCE FROM R/A LOCATION TP COMPLY WITH R315 IRC.
  2. VENT ALL EXHAUST FANS TO THE OUTSIDE.
  3. PROVIDE GFI PROTECTION AS REQUIRED.
  4. PROVIDE LIGHT FIXTURE AND SMOKE DETECTORS AT EACH WATER HEATER AND A/C UNIT LOCATION IN ATTIC.
  5. PROVIDE ELECTRIC DISCONNECT AT EACH A/C UNIT.
  6. ALLOW FOR A/C UNITS PER MECH. ENGINEER.
  7. PROVIDE LOW VOLTAGE CIRCUITS FOR SECURITY SYSTEM
  8. PROVIDE LOW VOLTAGE CIRCUITS FOR AUDIO SYSTEM AND SPEAKER LOCATIONS BY OWNER.
  9. PROVIDE CIRCUITS FOR FRONT AND REAR YARD LIGHTING

NOTE:  
ALL EXTERIOR LIGHTS SHOWN WITHOUT A SWITCH SOURCE SHALL BE CONNECTED TO A MOTION / PHOTOSENSOR OR TIMER.

