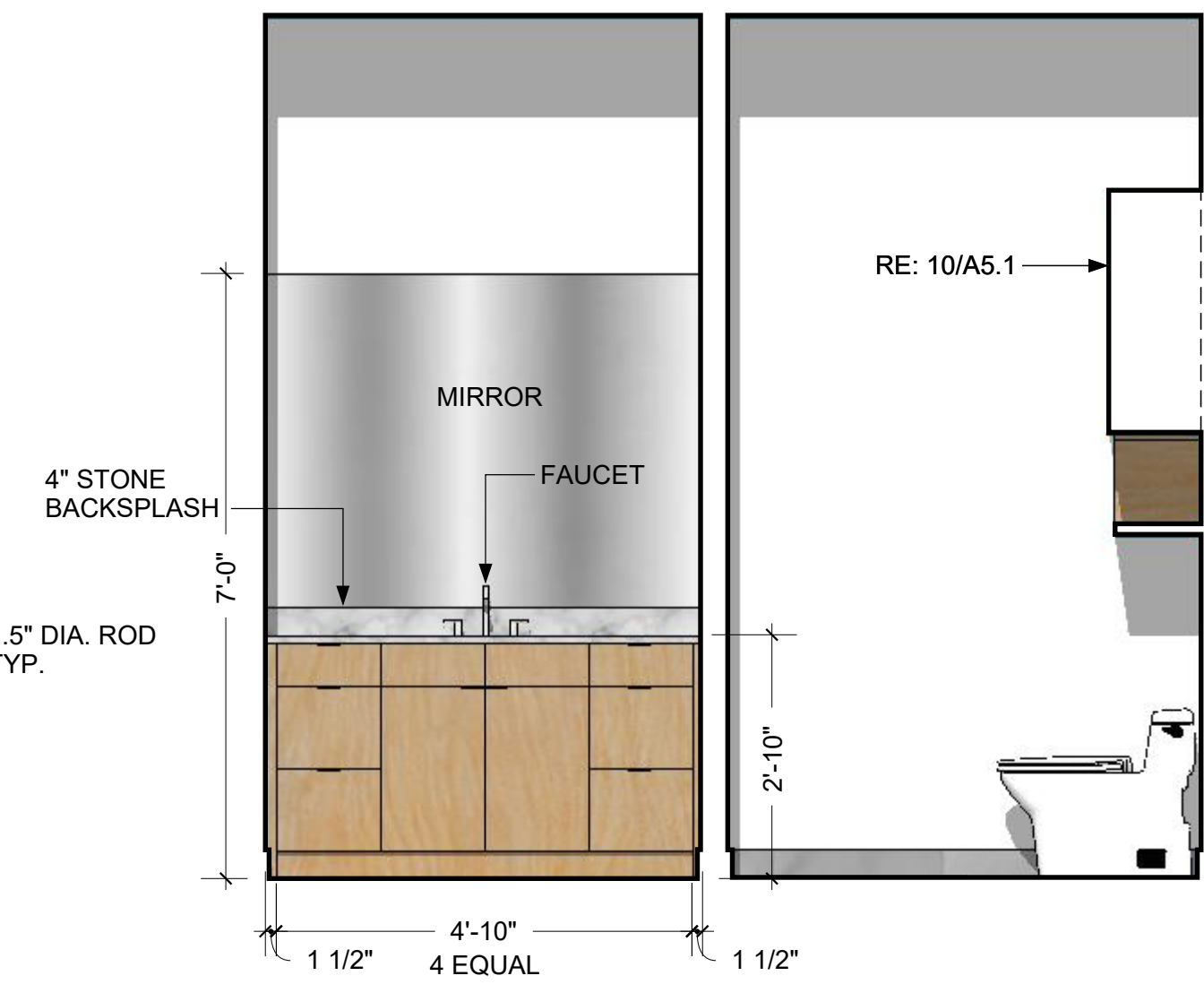
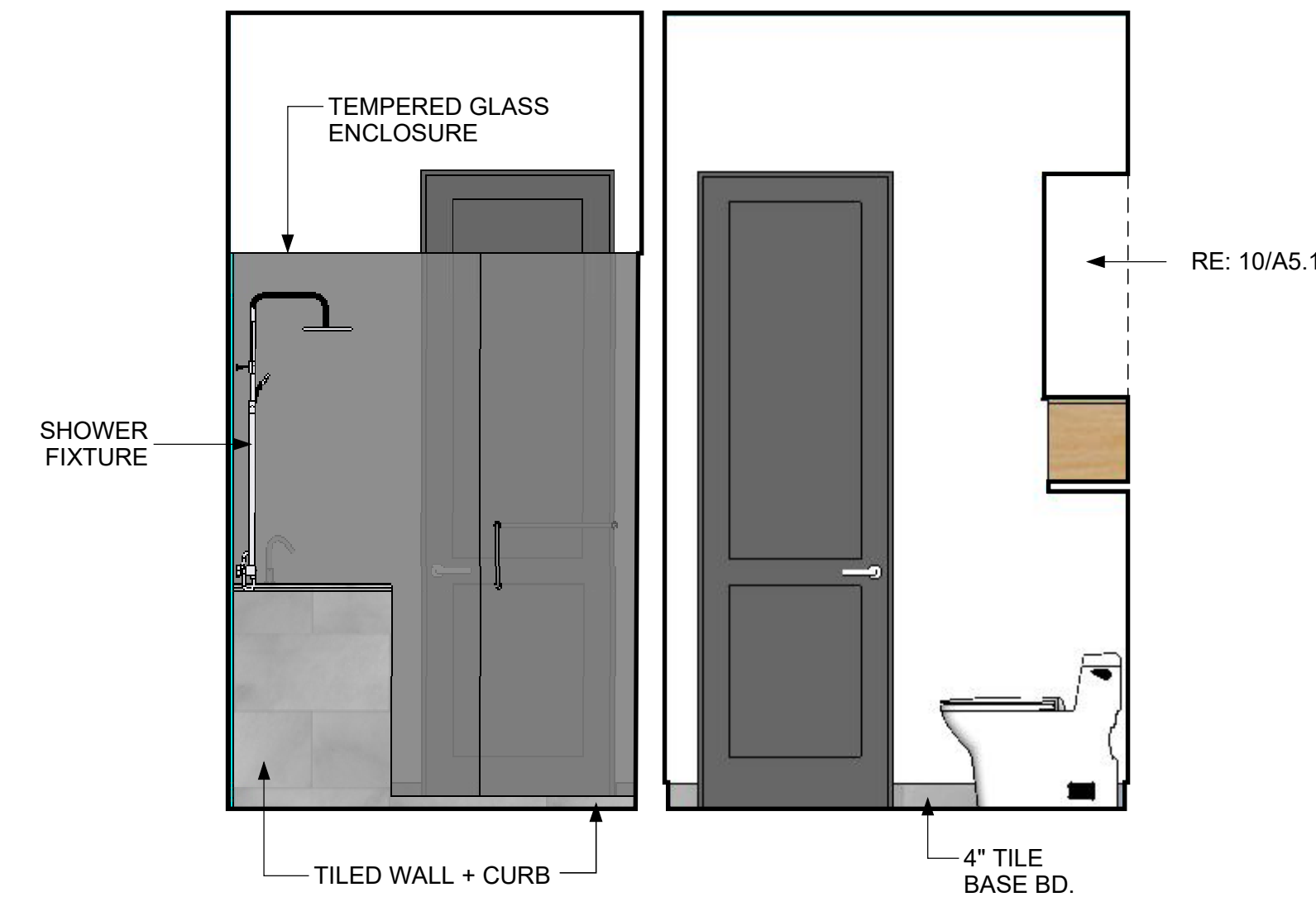


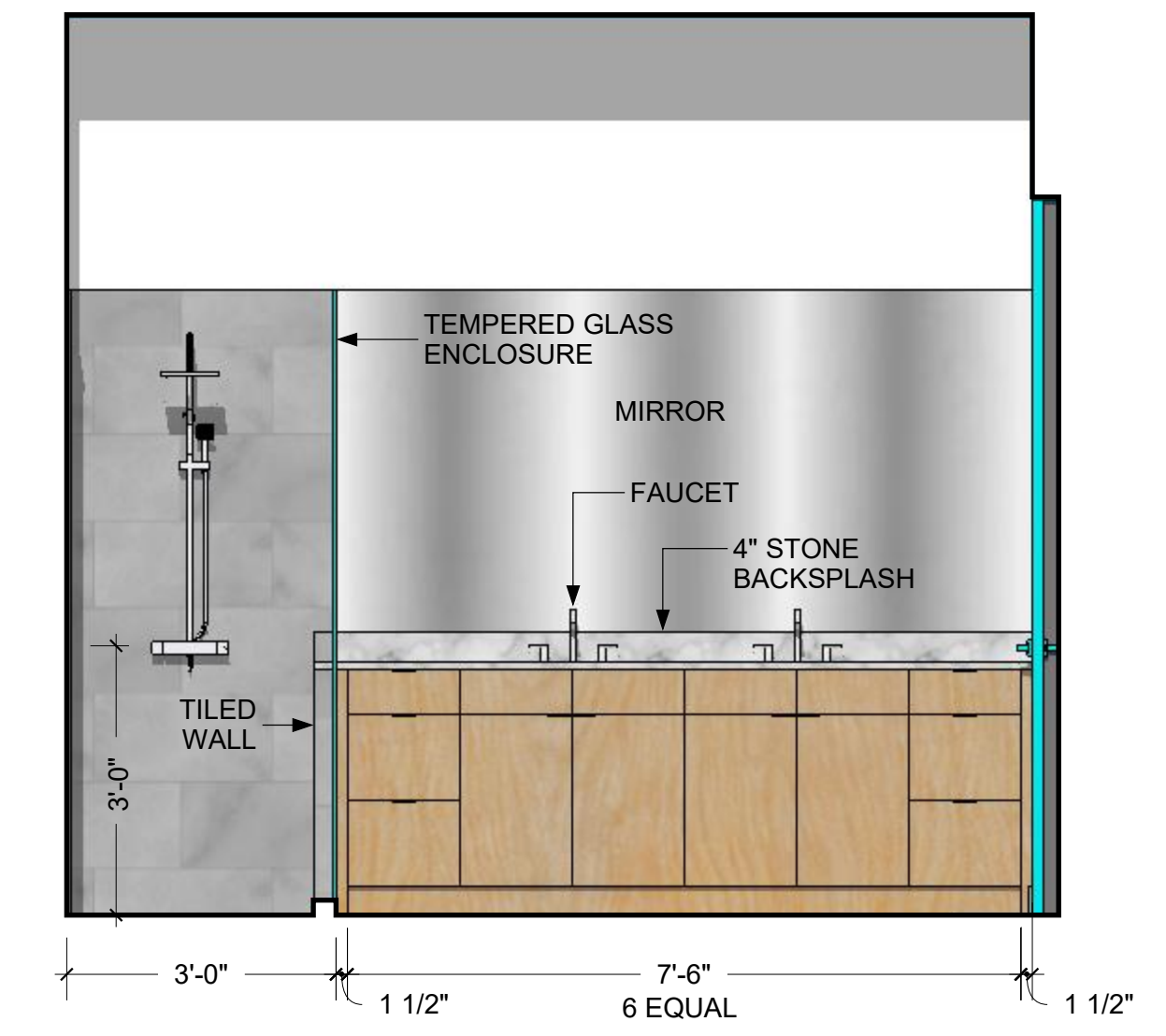
15 CLOSET 2 + WC2 SOUTH ELEVATION  
A5.1 1/2" = 1'-0"



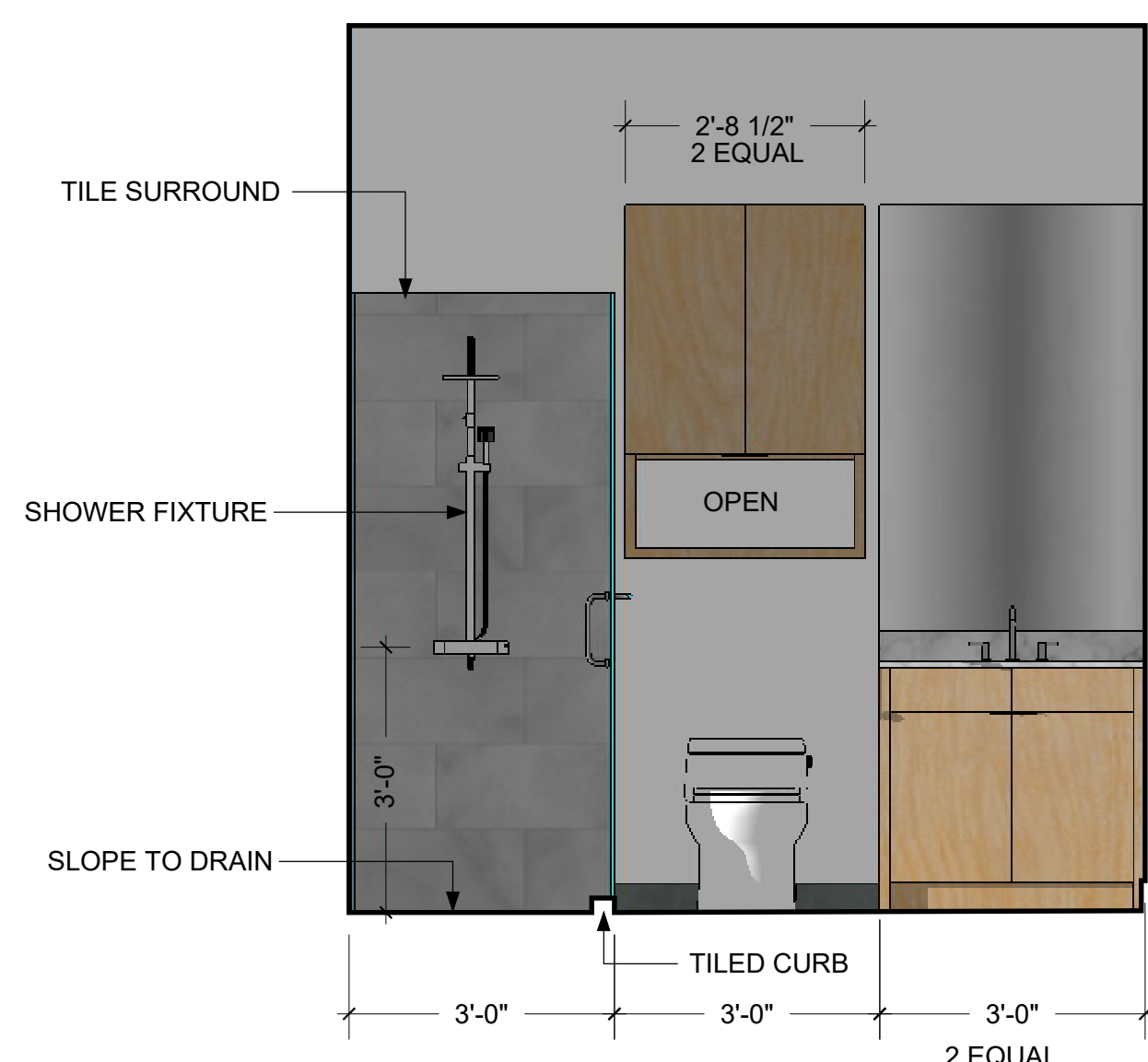
12 BATH 2 + WC2 EAST ELEVATION  
A5.1 1/2" = 1'-0"



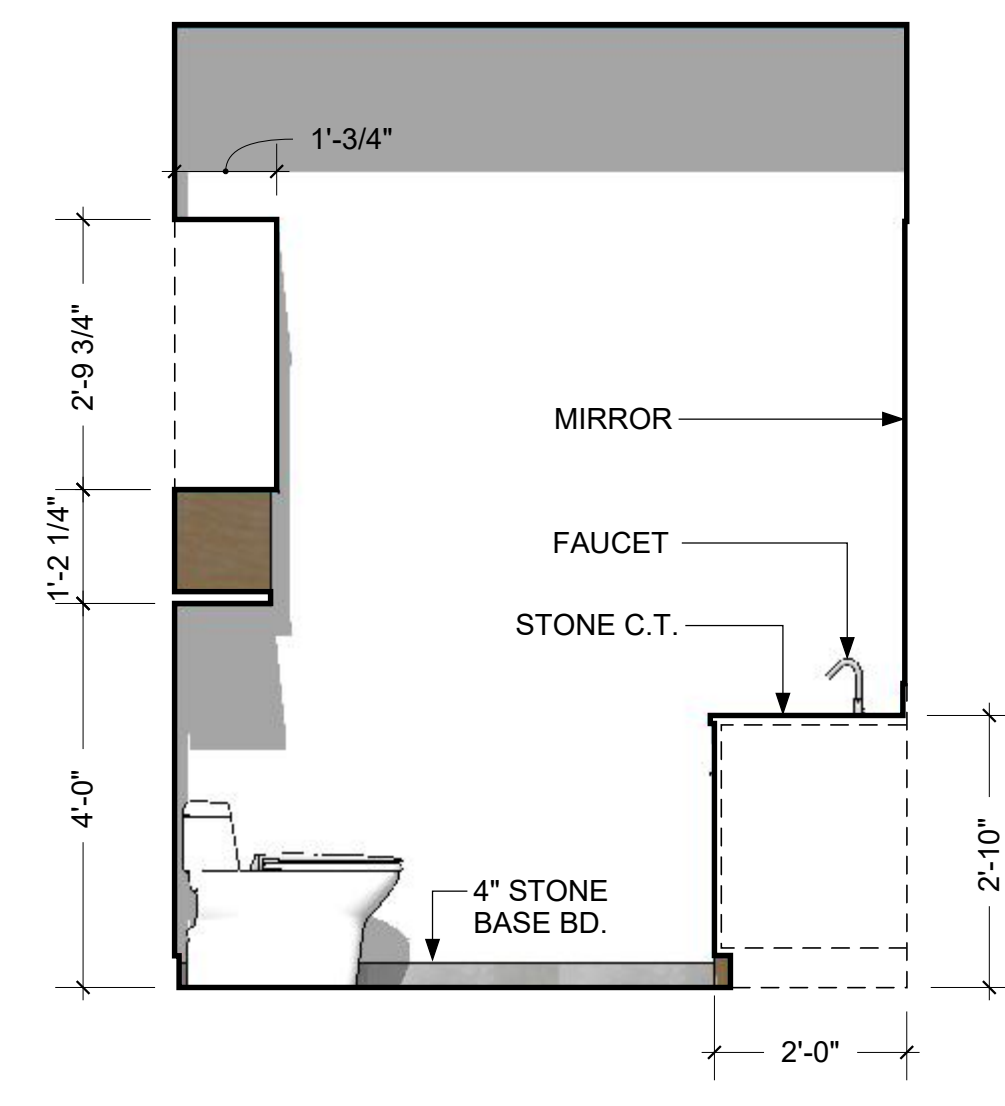
7 SHOWER + WC3 SOUTH ELEVATION  
A5.1 1/2" = 1'-0"



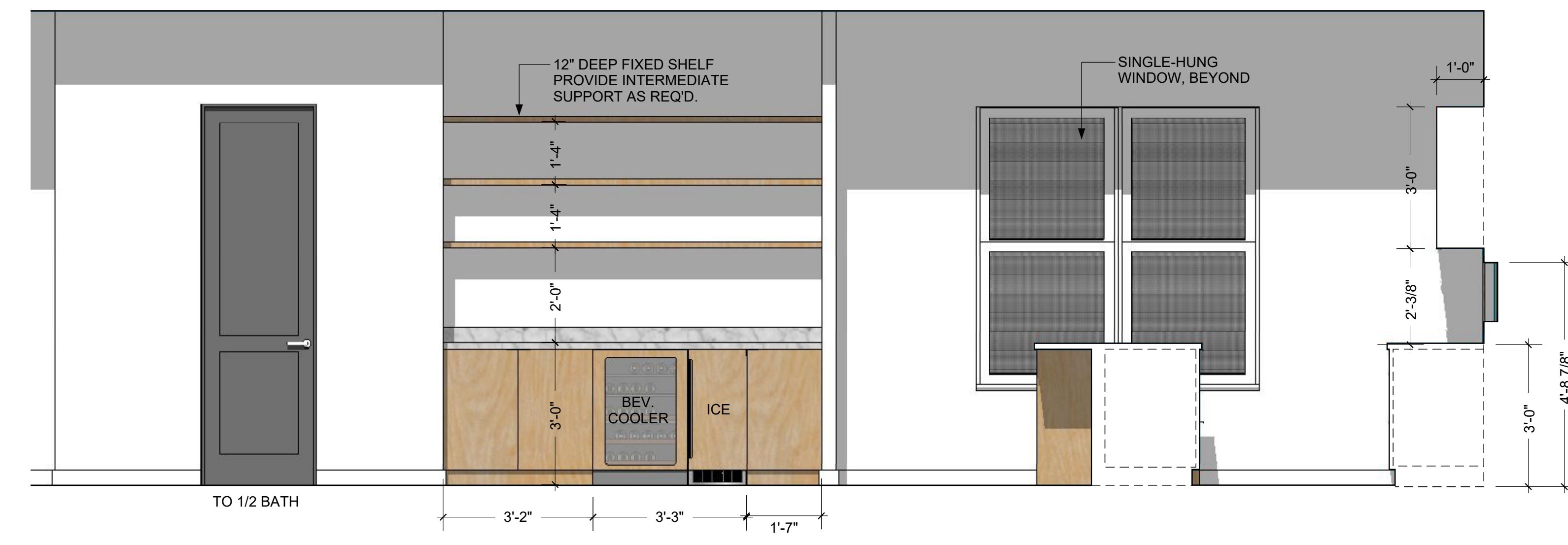
3 BATH 3 EAST ELEVATION  
A5.1 1/4" = 1'-0"



14 KITCHEN SOUTH ELEVATION  
A5.1 1/4" = 1'-0"

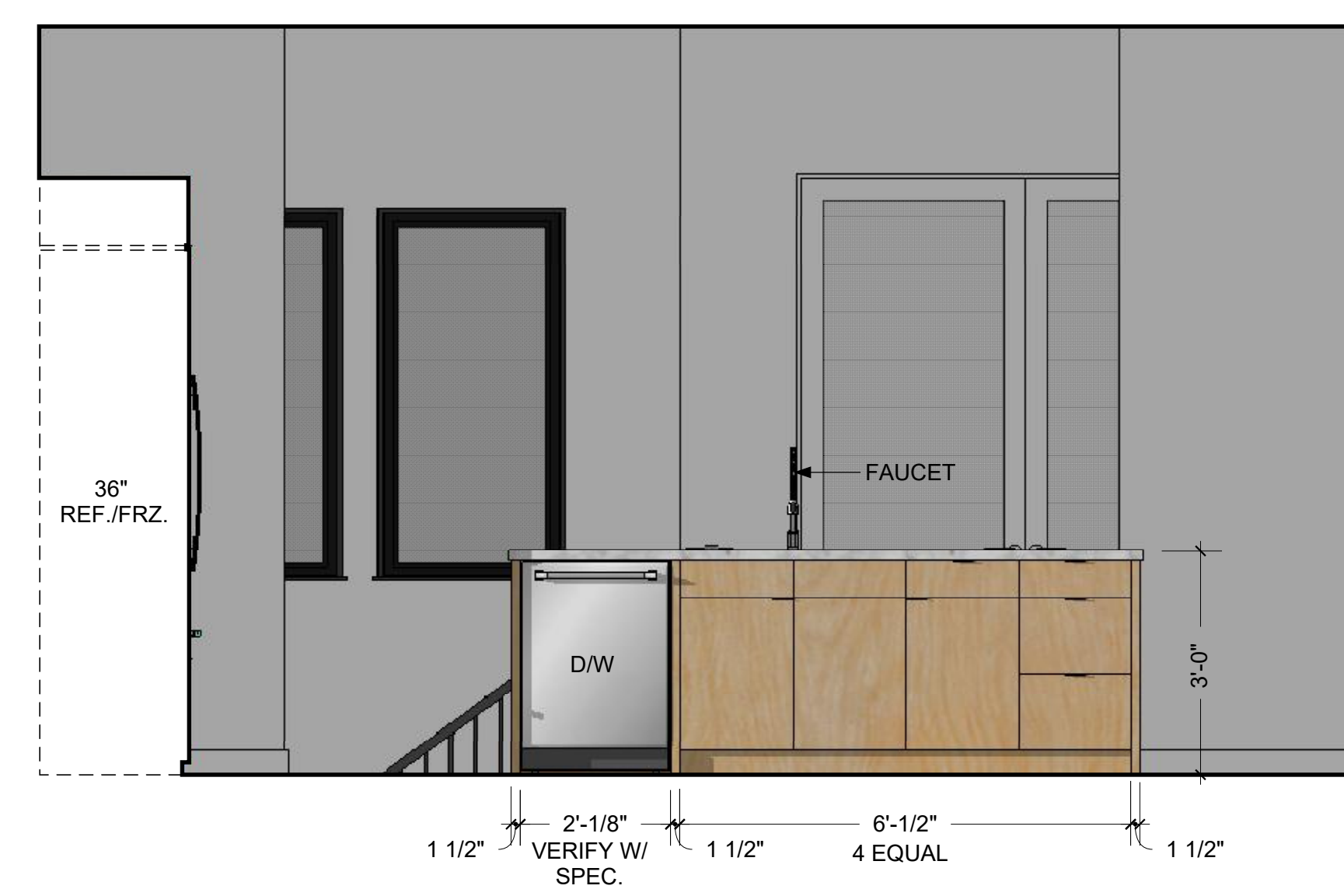


10 1/2 BATH WEST ELEVATION  
A5.1 1/4" = 1'-0"

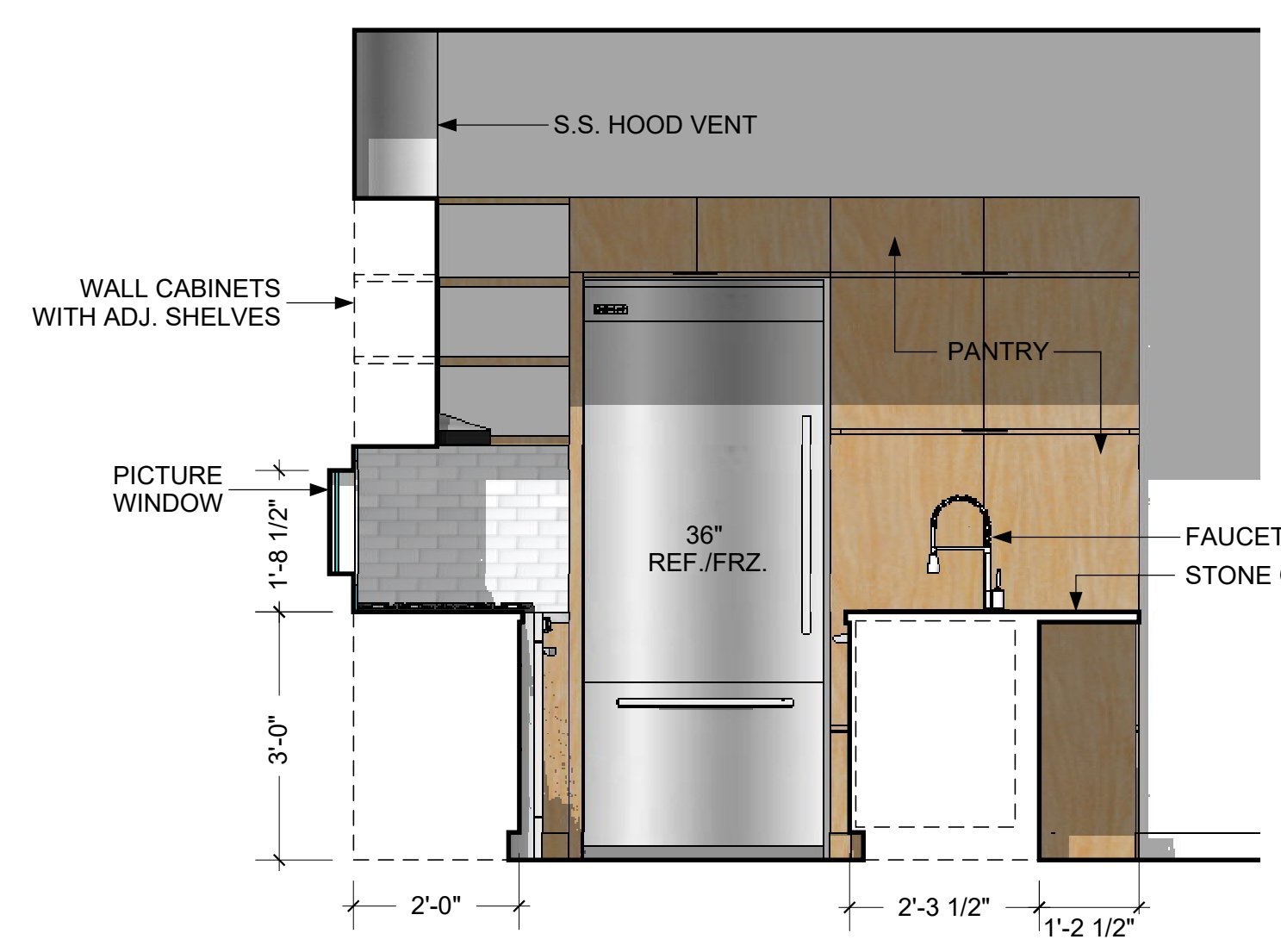


6 BAR WEST ELEVATION  
A5.1 1/4" = 1'-0"

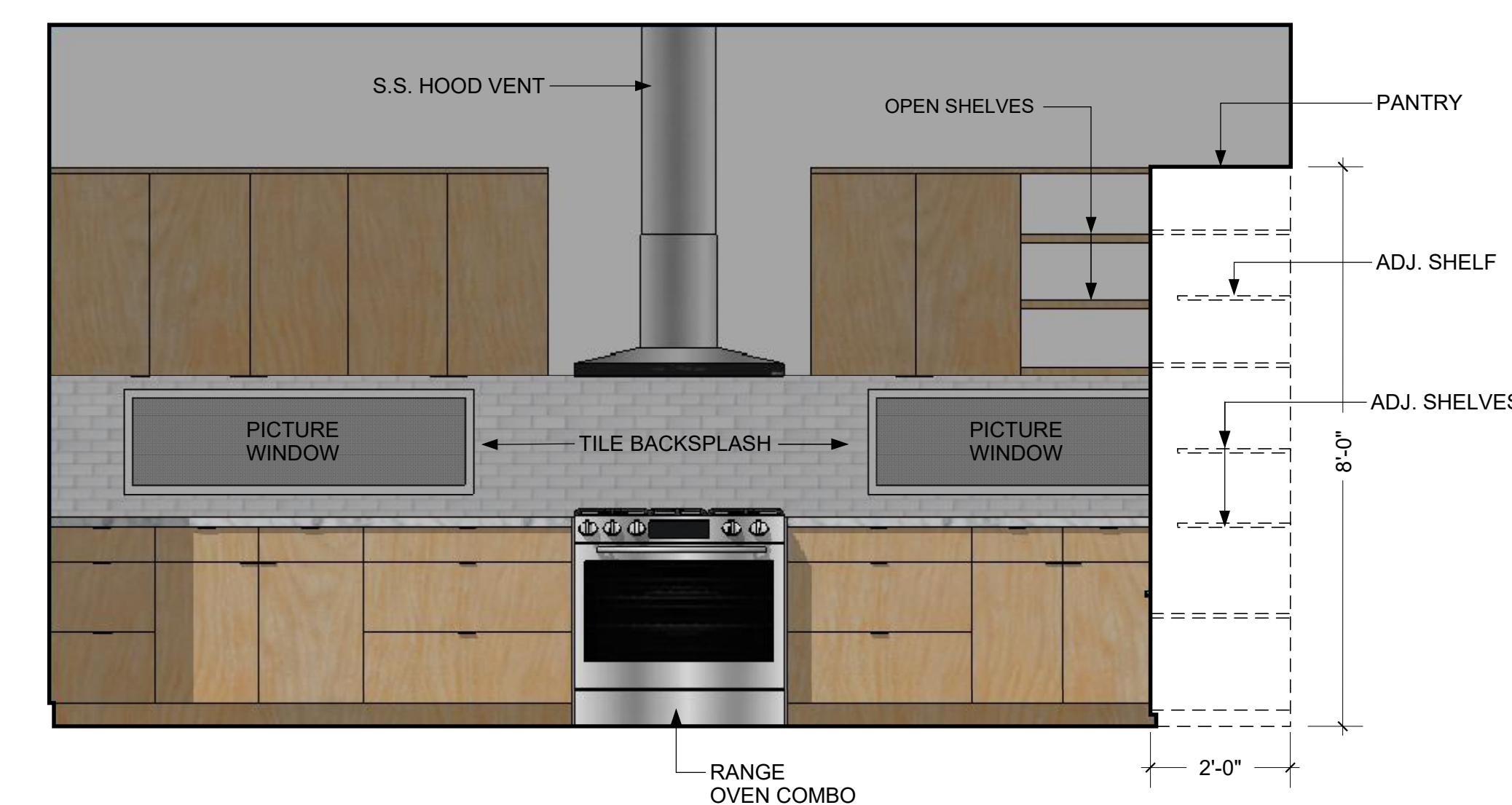
2 KITCHEN WEST ELEVATION  
A5.1 1/2" = 1'-0"



13 ISLAND NORTH FACE  
A5.1 1/2" = 1'-0"



9 KITCHEN EAST ELEVATION  
A5.1 1/2" = 1'-0"



1 KITCHEN NORTH ELEVATION  
A5.1 1/2" = 1'-0"