

S

AUTOMATIC OR GRAVITY DAMPERS ARE TO BE INSTALLED ON ALL OUTDOOR AIR INTAKES AND EXHAUSTS.

ALL ACCESS HATCH AND DOOR INSULATION VALUE GREATER THAN OR EQUAL TO THE ADJACENT ASSEMBLY.

LOWER DOOR TEST @ 50 PA. TO BE LESS THAN OR EQUAL TO 5 ACH FOR CLIMATE ZONE 1 AND 2.

DUCT TIGHTNESS TEST RESULT OF LESS THAN OR EQUAL TO 4 CFM @ 100 FT2 WITHOUT AIR HANDLER @ 25 PA. FOR ROUGH-IN TESTS.

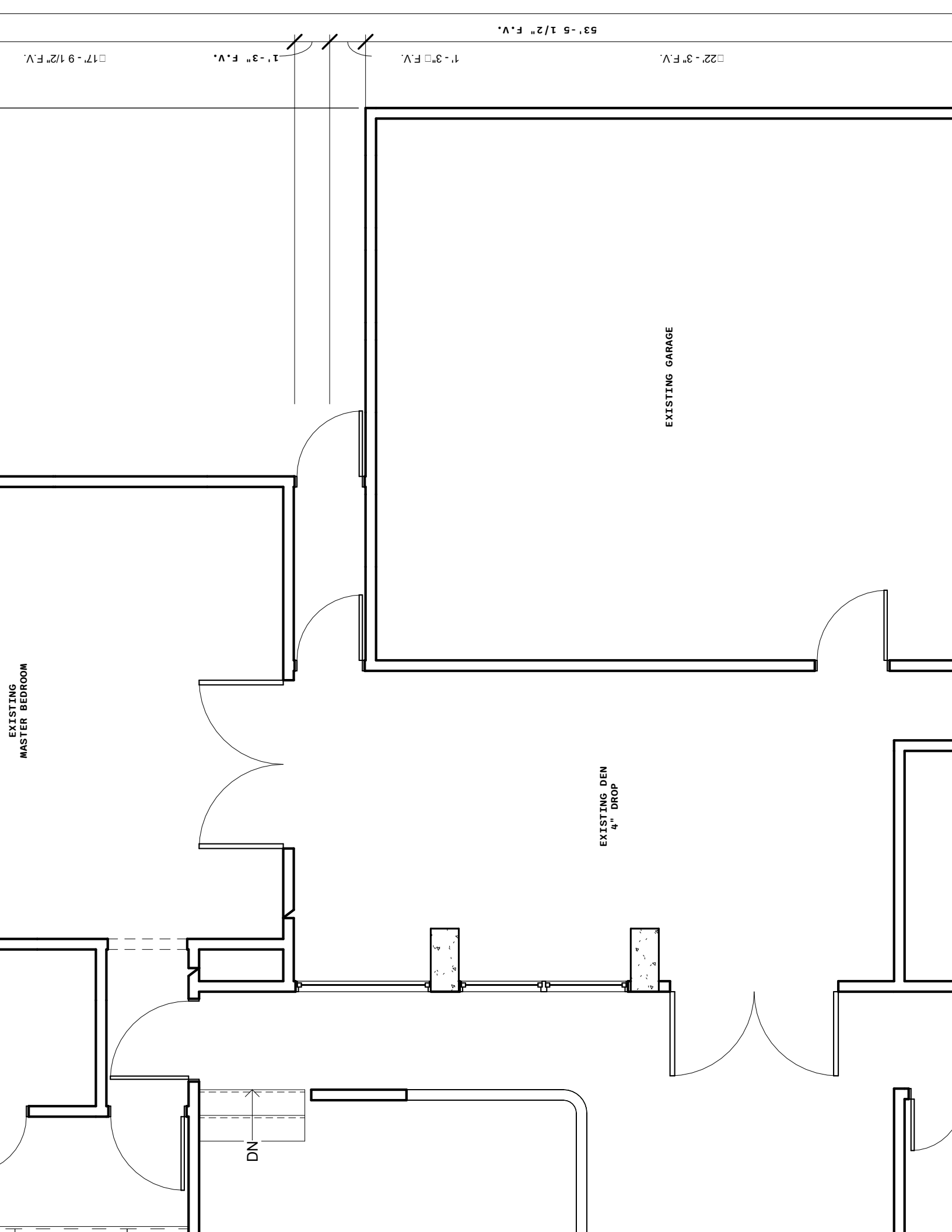
DUCTS ARE TO BE PRESSURE TESTED TO DETERMINE AIR LEAKAGE WITH EITHER: ROUGH-IN TEST: TOTAL LEAKAGE MEASURED WITH A PRESSURE DIFFERENTIAL OF 0.1 INCH W.G. ACROSS THE SYSTEM INCLUDING THE MANUFACTURER'S AIR HANDLER ENCLOSURE IF INSTALLED AT TIME OF TEST. OR, POST CONSTRUCTION TEST: TOTAL LEAKAGE MEASURED WITH PRESSURE DIFFERENTIAL OF 0.1 W.G. ACROSS THE ENTIRE SYSTEM INCLUDING THE MANUFACTURER'S AIR HANDLER ENCLOSURE.

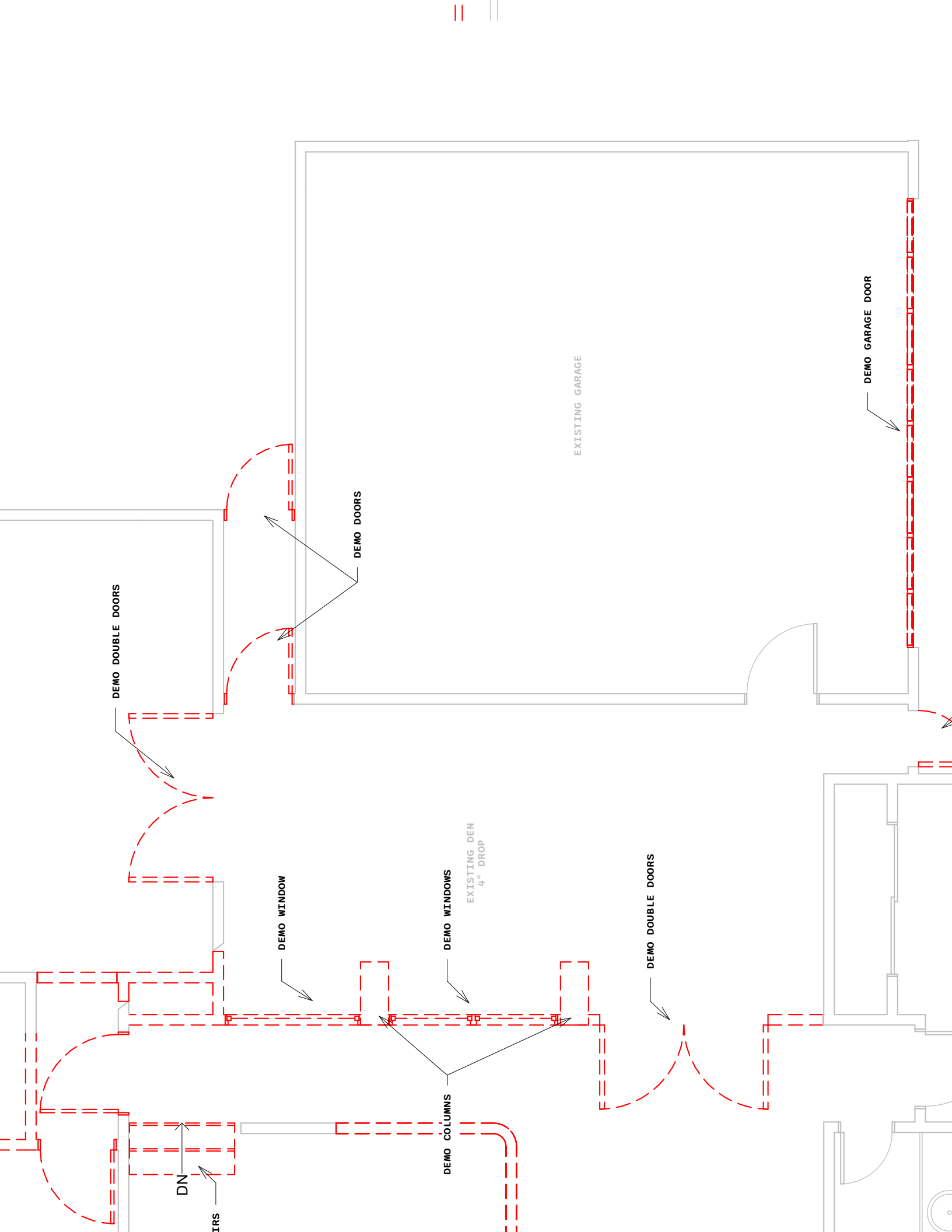
PROGRAMMABLE THERMOSTAT TO BE INSTALLED FOR CONTROL OF PRIMARY HEATING AND COOLING SYSTEMS AND INITIALLY SET BY MANUFACTURER TO CODE SPECIFICATIONS.

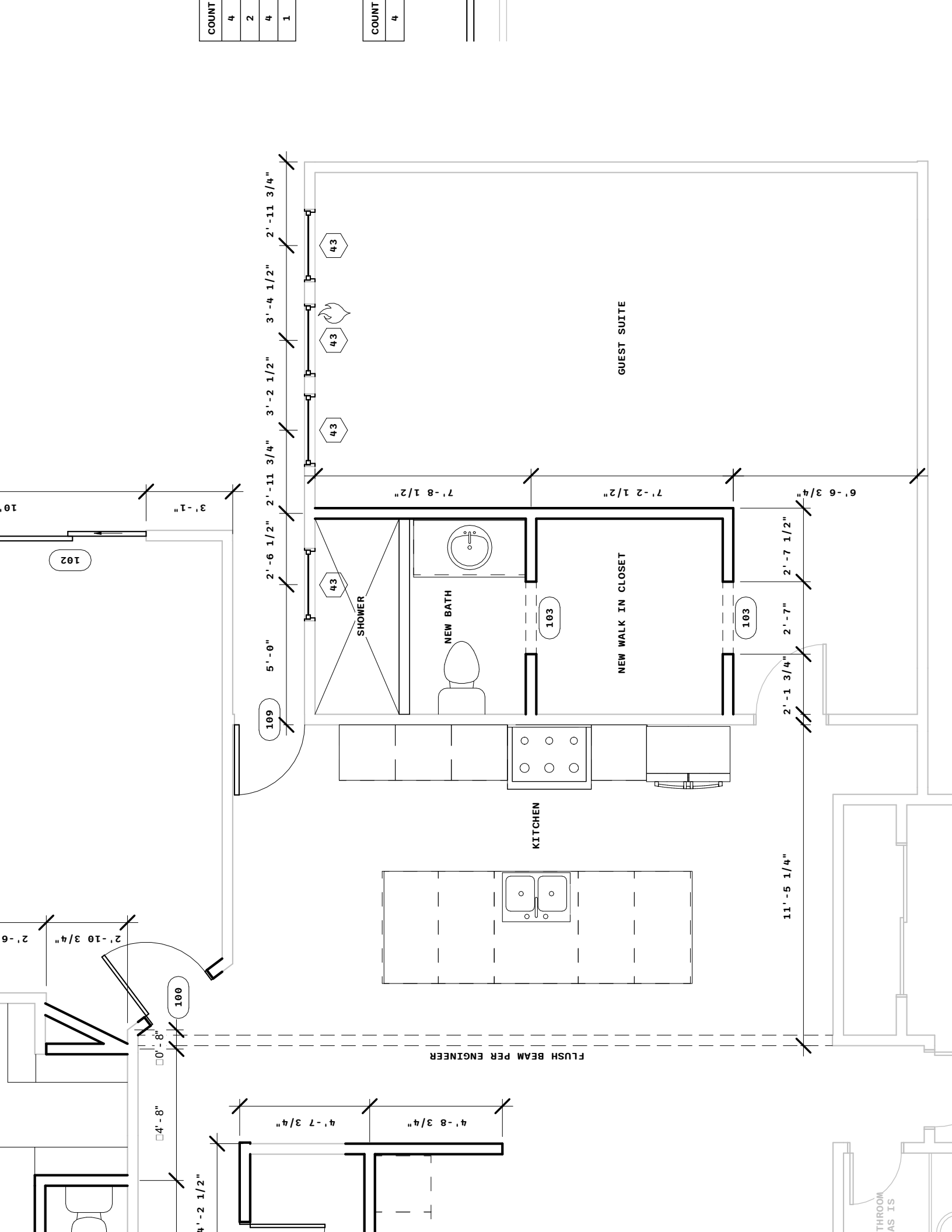
ALL MECHANICAL VENTILATION SYSTEM FANS NOT PART OF TESTED AND LISTED HVAC EQUIPMENT ARE TO MEET EFFICACY AND AIR FLOW LIMITS.

ELECTRIC HEAT TRACE SYSTEMS ARE TO COMPLY WITH IEEE 515.1 OR 515. CONTROLS AUTOMATICALLY ADJUST THE ENERGY INPUT TO THE HEAT TRACING TO MAINTAIN THE DESIRED WATER TEMPERATURE IN THE PIPING.

WHEN USED, A WATER DISTRIBUTION SYSTEMS THAT HAVE RECIRCULATION PUMPS THAT PUMP WATER FROM A HEATED WATER SUPPLY PIPE BACK TO THE HEATED WATER SOURCE THROUGH A COLD WATER SUPPLY PIPE HAVE A DEMAND RECIRCULATION WATER SYSTEM. PUMPS ARE TO HAVE CONTROLS THAT MANAGE OPERATION OF THE PUMP AND LIMIT THE TEMPERATURE OF THE WATER ENTERING THE COLD WATER PIPING TO 104 DEGREES FAHRENHEIT.







COUNT	4
	2
	4
	1

COUNT	4
-------	---

FLUSH BEAM PER ENGINEER

THROUGH AS IS

BONUS ROOM TO BE EXTENDED  
ACROSS FIRST LEVEL DINING ROOM

DEMO

EXISTING

