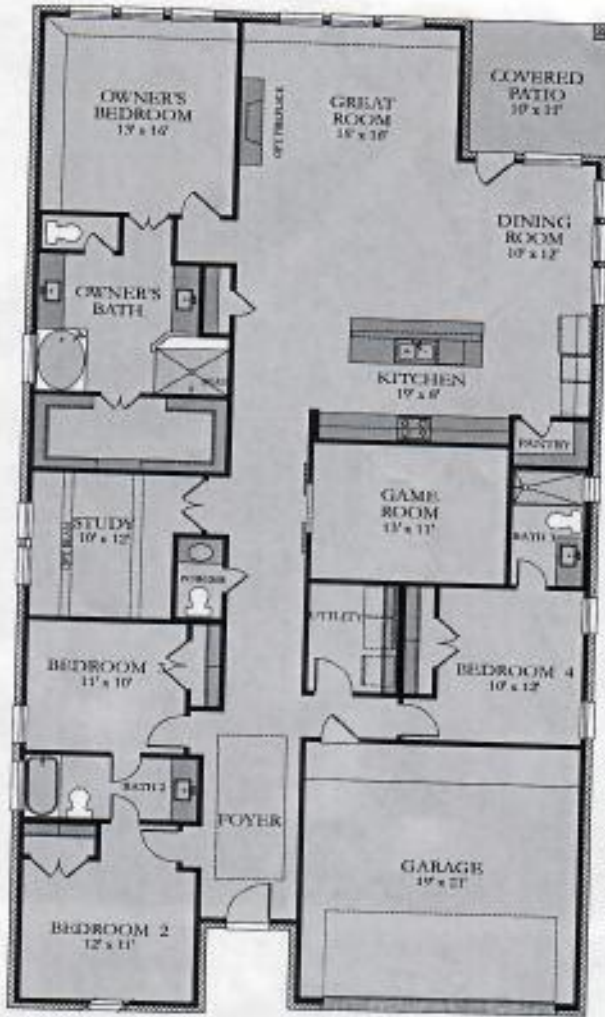


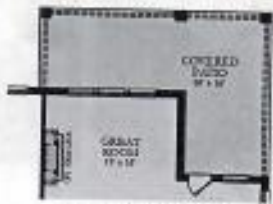
The Beechwood THE ICON V3 COLLECTION

PLAN: 4472 | 2,640 SQ. FT. | 4 BEDROOMS | 3.5 BATHS | 2 CAR GARAGE

FIRST FLOOR



OPTIONS



VILLAGEBUILDERS.COM

FEATURES, AMENITIES, FLOOR PLANS, ELEVATIONS, AND FINISHES SHOWN ARE SUBJECT TO CHANGE OR SUBSTITUTION WITHOUT NOTICE. ITEMS SHOWN ARE ARTIST'S RENDERINGS AND MAY CONTAIN OPTIONS THAT ARE NOT STANDARD OR NOT INCLUDED IN THE PURCHASE PRICE. AVAILABILITY MAY VARY. CERTAIN PRODUCTS OR SERVICES ARE PROVIDED BY THIRD PARTIES, AND NOT LEGAL. LENNAR DOES NOT GUARANTEE ANY EQUIPMENT OR SERVICES PROVIDED BY THIRD PARTIES. COPYRIGHT © 2014 LENNAR CORPORATION, VILLAGE BUILDERS AND THE VILLAGE BUILDERS LOGO ARE U.S. REGISTERED SERVICE MARKS OR SERVICE MARKS OF LENNAR CORPORATION AND/OR ITS AFFILIATES. 01/14



Luxury Included Features THE ICON V3 COLLECTION

INSIDE YOUR NEW VILLAGE BUILDERS® HOME:

- **Designer tile throughout first floor living spaces, kitchen and utility room**
- Nickel door hardware
- Performance carpet with stainguard and 1/2" nominal pad
- **Energy efficient LED lighting throughout home**
- **8' raised panel interior doors on first floor**
- **Iron stair balusters**
- Security system with motion detector, 1 keypad, and sensors at front door, garage entry door, to main home, and patio door

EXTERIOR KEY FEATURES:

- Moisture-resistant fiber-cement siding
- **Landscaping package with full front and back sod and automatic irrigation system**
- **Front gutters**
- **8' Designer front door & full lite patio door**
- Brick front porch
- 30-Year high quality dimensional shingles
- Designer coach lamps on front elevation
- **Covered concrete rear patio**
- Hose bibbs at front and rear of home
- Two-tone exterior designer paint package
- Insulated garage door with decorative hardware, automatic opener and 2 remotes

THE KITCHEN OF YOUR DREAMS INCLUDES:

- **Built-in Frigidaire® energy-efficient stainless steel appliances**
 - 36" 5-burner, stainless steel cooktop
 - Quiet dishwasher with Orbit Clean® technology
 - Microwave with soft touch panel
- **46" Designer cabinets**
- **Subway style backsplash with numerous design choices**
- Designer selection of solid surface countertops
- Spacious, single bowl stainless steel undermount sink
- **Contemporary Moen® chrome pullout faucet**
- Under cabinet lighting
- Spacious walk-in pantry *on select designs

LUXURIOUS OWNERS BATH:

- **Designer tile on floor, shower walls, and tub surround *where applicable**
- Recessed shower with mesh tile flooring
- **Semi-Frameless glass shower enclosure**
- Opaque window at tub, on select designs
- **Designer vanity cabinets**
- **Quartz countertops with rectangular undermount sink**
- **Contemporary Moen® chrome faucets and rain shower head with matching bath accessories**
- Elongated commode with slow-close seat
- **Spacious, climate controlled walk-in owners closet with shelving**

SECONDARY BATHS:

- **Designer tile on floor and shower walls**
- **Designer vanity cabinets**
- **Quartz countertops with rectangular undermount sinks**
- **Contemporary Moen® chrome faucets and rain showerhead with matching bath accessories**
- Elongated commode with slow-close seat

POWDER ROOM

- **Designer tile flooring**
- Cabinet with rectangular undermount sink
- **Contemporary Moen® chrome faucet and accessories**
- Elongated commode with slow-close seat
- **Decorative framed mirror**

Luxury Included Features THE ICON V3 COLLECTION

YOUR LAUNDRY ROOM INCLUDES:

- **Designer tile flooring**
- **Overhead Rod and Shelf for Storage**
- Freezer space with water line *on select designs

ENERGY EFFICIENT FEATURES:

- **Programmable Honeywell® Wi-Fi thermostat with humidity control**
- **Lennox® 16-SEER two stage air conditioning system**
- High-performance, insulated multi-layer vinyl windows
- Tilt-out sash on all operable windows
- *The Village Builders® Comfort Advantage System:*
- **Honeywell® T10 Pro Smart Wi-Fi Thermostat**
- **Advanced media air cleaner for optimally clean air**

QUALITY CONSTRUCTION:

- **3,000-PSI, post-tension foundation certified by an Independent Engineer**
- Rigorous inspection process conducted at all critical stages of construction
- Quality assurance inspection prior to New Home Orientation
- Personal New Home Orientation and delivery by Village Builders® Construction Manager and/or Customer Care Representative

PREMIER HOUSTON DESIGN STUDIO:

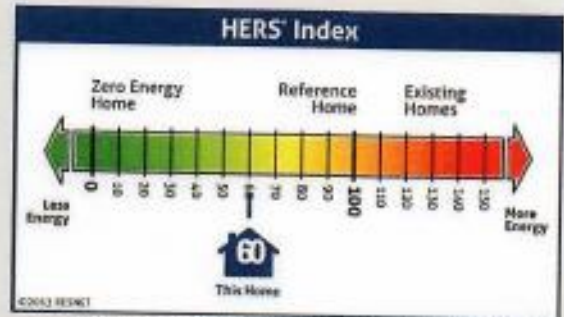
- **Complimentary two-hour consultation with a professional designer at The Design Studio, for pre-construction customers**
- Unlimited time to get inspired at The Design Studio during business hours
- For customer purchasing an inventory home, enjoy hand-selected finishes by a professional Village Builders® designer

* Features, amenities, floor plans, elevations, and designs vary and are subject to changes or substitution without notice. Items shown are artist's renderings and may contain options that are not standard on all models or not included in the purchase price. Availability may vary. See a Village Builders New Home Consultant for more information. Copyright © 2020 Lennar Corporation. Village Builders and the Village Builders logo are U.S. registered service marks or service marks of Lennar Corporation and/or its subsidiaries. 9/29/21



ENERGY STAR® CERTIFIED NEW CONSTRUCTION

Builder/Developer: Lennar / Village Builders
Permit Date/Number:
Home/Unit Address: 5109 Andorra Bend Lane, Porter, TX 77365
Rating Company: ARCXIS Builder Services
Rater ID Number: 6156387
Rating Date: 03/16/2022
Oversight By: RESNET
Program/Version Number: 3.1



Standard Features of ENERGY STAR Certified New Homes and Apartments

Your ENERGY STAR certified new home or apartment has been designed, constructed, and independently verified to meet rigorous requirements for energy efficiency set by the U.S. Environmental Protection Agency (EPA), including:

Thermal Enclosure System

A complete thermal enclosure system that includes comprehensive air sealing, quality-installed insulation, and high-performing windows to deliver improved comfort and lower utility bills.



Air Infiltration Test: 1942 CFM50 (4.33 ACH50)

Primary Insulation Levels:

Ceiling: R-38	Floor: N/A
Wall: R-13	Slab: R-0

Primary Window Efficiency:

U-Value: 0.34 SHGC: 0.22

Water Management System

A comprehensive water management system to protect roofs, walls, and foundations.



Flashing, a drainage plane, and site grading to move water from the roof to the ground and then away from the home or building.

Water-resistant materials on below-grade walls and underneath slabs to reduce the potential for water entering the home or building.

Management of moisture levels in building materials during construction.

Heating, Cooling, and Ventilation System

A high-efficiency heating, cooling, and ventilation system that is designed and installed for optimal performance.



Total Duct Leakage: 169 CFM @ 25Pa (Post-Construction)
Duct Leakage to Outdoors: 71 CFM @ 25Pa (2.79 / 100 ft²)

Primary Heating (System Type • Fuel Type • Efficiency):
Furnace • Natural Gas • 80 AFUE

Primary Cooling (System Type • Fuel Type • Efficiency):
Air Conditioner • Electric • 16 SEER

Whole-House Ventilation Type (System Type):
Supply Only

Energy Efficient Lighting and Appliances

Energy efficient products to help reduce utility bills, while providing high-quality performance.



Energy Efficient Lighting: 100%

ENERGY STAR Certified Appliances and Fans:

Refrigerators: 1	Dishwashers: 1
Ceiling Fans: 5	Exhaust Fans: 4

Primary Water Heater (System Type • Fuel Type • Efficiency):
Residential Water Heater • Natural Gas • 0.63 Energy Factor

About this certificate

The certificate provides a summary of the major energy efficiency and other construction features that contribute to this home or apartment earning the ENERGY STAR, as determined through independent inspection and verification performed by a trained professional. The Energy Rating Index or HERS Index for this home, if reported, is calculated in accordance with ANSI/RESNET/ICC Standard 301, with any exceptions

approved by EPA. Because the version of Standard 301 used to calculate this index may not align with the version referenced by code, this value is not intended to be used to demonstrate compliance with code. Note that when a home or apartment contains multiple performance levels for a particular feature (e.g., window efficiency or insulation levels), the predominant value is shown. Also, homes and apartments may be certified

to earn the ENERGY STAR using a sampling protocol, whereby one home or apartment is randomly selected from a set for representative inspections and testing. In such cases, the features found in each home or apartment within the set are intended to meet or exceed the values presented on this certificate. The actual values for your home or apartment may differ, but offer equivalent or better performance.

