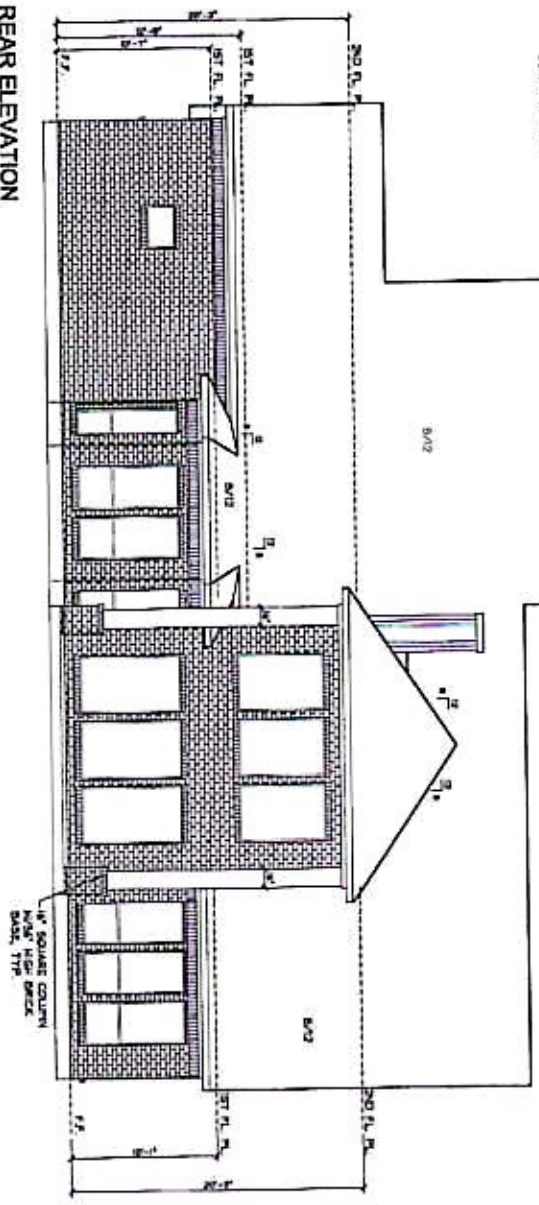


REAR ELEVATION



FRONT ELEVATION

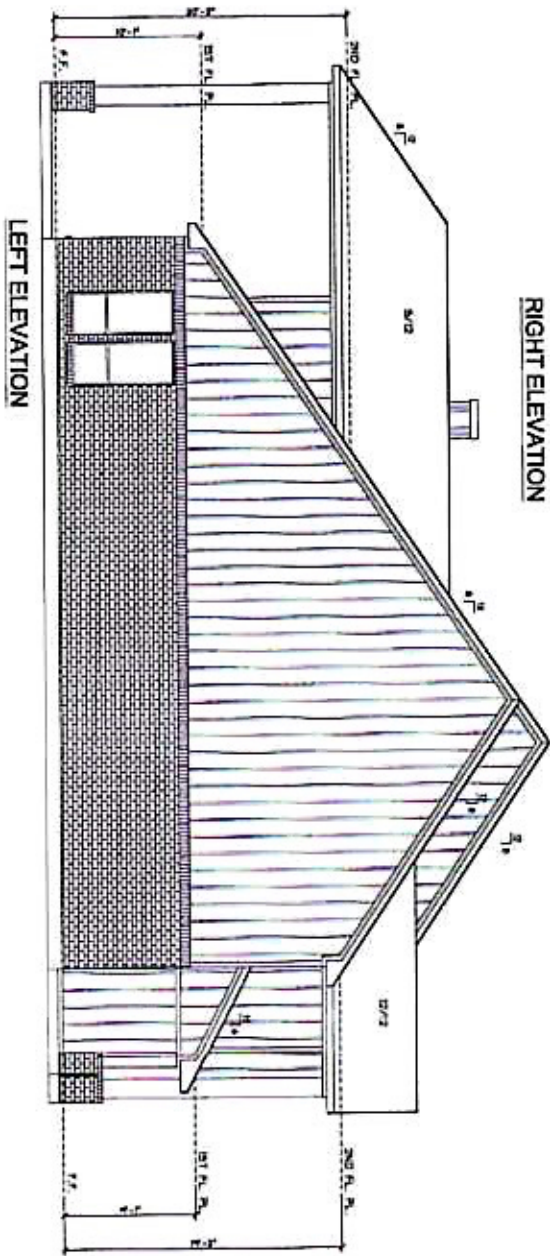


FINISH MATERIAL X
BRICK: 2312 S.F.
SIDING: 2227 S.F.
TOTAL: 4539 S.F.
BRICK: 51%
SIDING: 49%

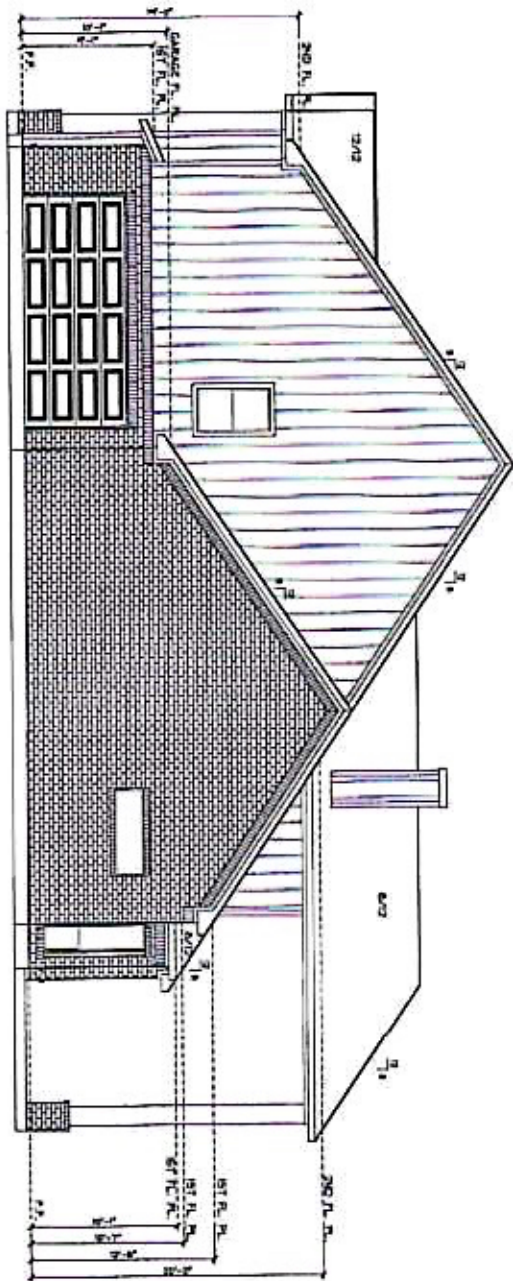
HARRISBURG HOMES
DESIGNER
DATE
PROJECT NO.
TERMINATION
REVISIONS
DATE
BY
9 OF 14

HARRISBURG HOMES

REVISION



LEFT ELEVATION



RIGHT ELEVATION

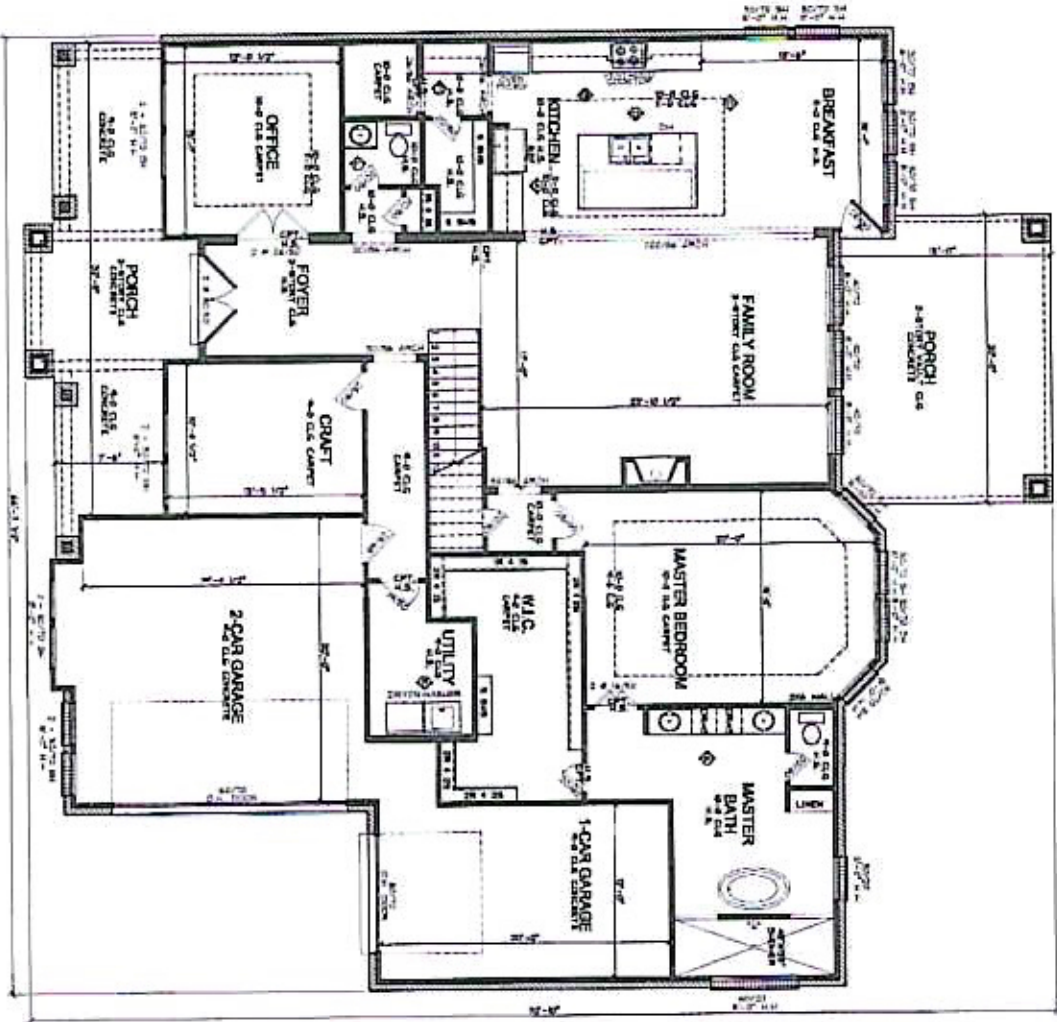
FINISH MATERIAL X
BRICK: 2312 S.F.
SIDING: 2227 S.F.
TOTAL: 4539 S.F.
BRICK: 51%
SIDING: 49%

MANUFACTURED
BY
DATE
SCALE
PROJECT
NO.
18-07-14



REVISION

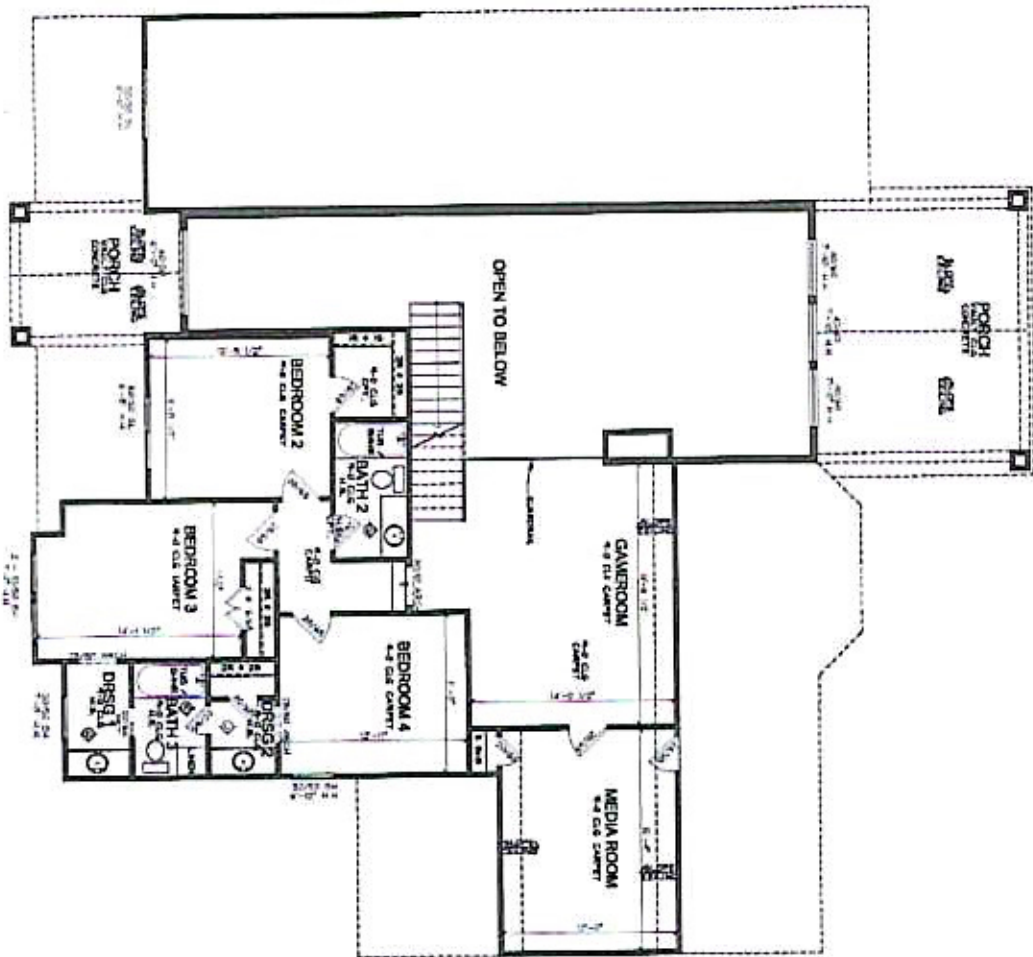
SQUARE FOOTAGES	
1st FLOOR LIVING	1824
2nd FLOOR LIVING	1824
TOTAL LIVING	3648
1st FLOOR KITCHEN	1073
2nd FLOOR KITCHEN	1073
TOTAL KITCHEN	2146
1st FLOOR BATH	512
2nd FLOOR BATH	512
TOTAL BATH	1024
1st FLOOR BEDRM	1152
2nd FLOOR BEDRM	1152
TOTAL BEDRM	2304
1st FLOOR OFFICE	1073
2nd FLOOR OFFICE	1073
TOTAL OFFICE	2146
1st FLOOR PORCH	424
2nd FLOOR PORCH	424
TOTAL PORCH	848
1st FLOOR GARAGE	1073
2nd FLOOR GARAGE	1073
TOTAL GARAGE	2146
TOTAL SQUARE FOOTAGE	14112



DATE	11/14/21
BY	11/14/21
SCALE	1/8" = 1'-0"
REVISIONS	
PROJECT	HARRISBURG HOMES
PLAN	FLOOR PLAN
SHEET NO.	1 OF 14



REVISIONS	



PLAN NUMBER	12014
DATE	12/14
SCALE	1/8" = 1'-0"
REVISIONS	
DATE	
BY	
CHECKED	
DATE	



NO.	1
DATE	
BY	
DESCRIPTION	
NO.	2
DATE	
BY	
DESCRIPTION	