

Features

11729 Jelicoe Drive
Houston, TX 77047

Modern Comfort & Peace of Mind

- Newer big-ticket improvements including a 2024 roof, 2022 solar panels, and a 2019 AC system
- Fresh interior paint in multiple spaces, creating a clean, move-in-ready feel
- Detached garage with alley access for easy parking and storage
- Washer and dryer included

Standout Spaces

- Rare second-floor balcony plus a welcoming covered front porch—two great spots to unwind or enjoy a morning coffee
- A comfortable, well-designed layout that flows naturally from room to room
- Flexible front room that works beautifully as an office, playroom, hobby space, or quiet den
- Upstairs game room offering extra living space for relaxing or entertaining

Kitchen & Dining

- Bright kitchen with a breakfast bar for casual meals
- Charming breakfast nook plus a separate formal dining area for gatherings
- Walk-in pantry for easy organization and extra storage

Primary Suite & Storage

- Spacious primary bedroom with access to the balcony
- Large walk-in closet
- Bathroom with an oversized vanity, providing plenty of counter space and daily convenience

Lifestyle & Location Perks

- Playground just steps away across the sidewalk
- Peaceful neighborhood with convenient access to Houston, Pearland, and nearby restaurants, coffee spots, and essentials like QT and Starbucks

UPDATES:

2025:

- Fresh Interior Paint
- New carpet throughout second floor

2024: New roof on house and garage

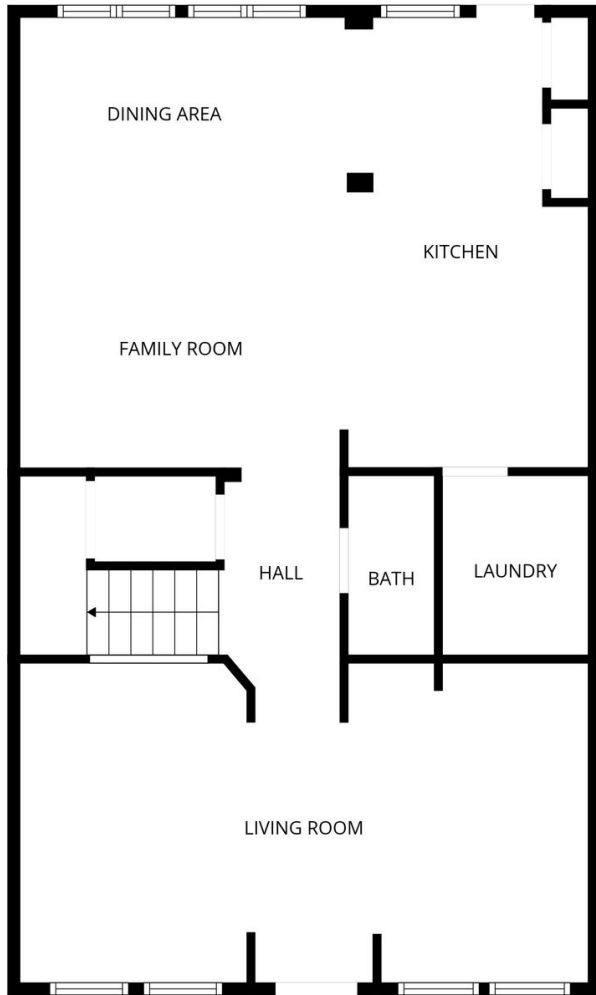
2023: Exterior re-caulked and painted

2022: Solar panels installed

2019: New AC installed

Floorplan

11729 Jelicoe Drive
Houston, TX 77047



FLOOR 1



FLOOR 2

FLOOR PLAN CREATED BY CUBICASA APP. MEASUREMENTS DEEMED HIGHLY RELIABLE BUT NOT GUARANTEED.

We've asked the sellers a few questions to get to know their community...

11729 Jelicoe Drive
Houston, TX 77047

How would you describe the area, and what it's like living here?

Very quiet and peaceful neighborhood. There's a little playground just outside the front door, which brings a lively, family-friendly feel. Neighbors are friendly and keep to themselves, creating a comfortable, welcoming atmosphere.

What has been your favorite thing about living in this community?

Convenient access to the Med Center area for work and a sense of safety and peace of mind.

What are your favorite places to eat, shop, visit in the neighborhood?

Nearby options include Domino's, Chipotle, Whataburger, Starbucks, and QT. The location is convenient to both Houston and Pearland, making shopping and dining easy.

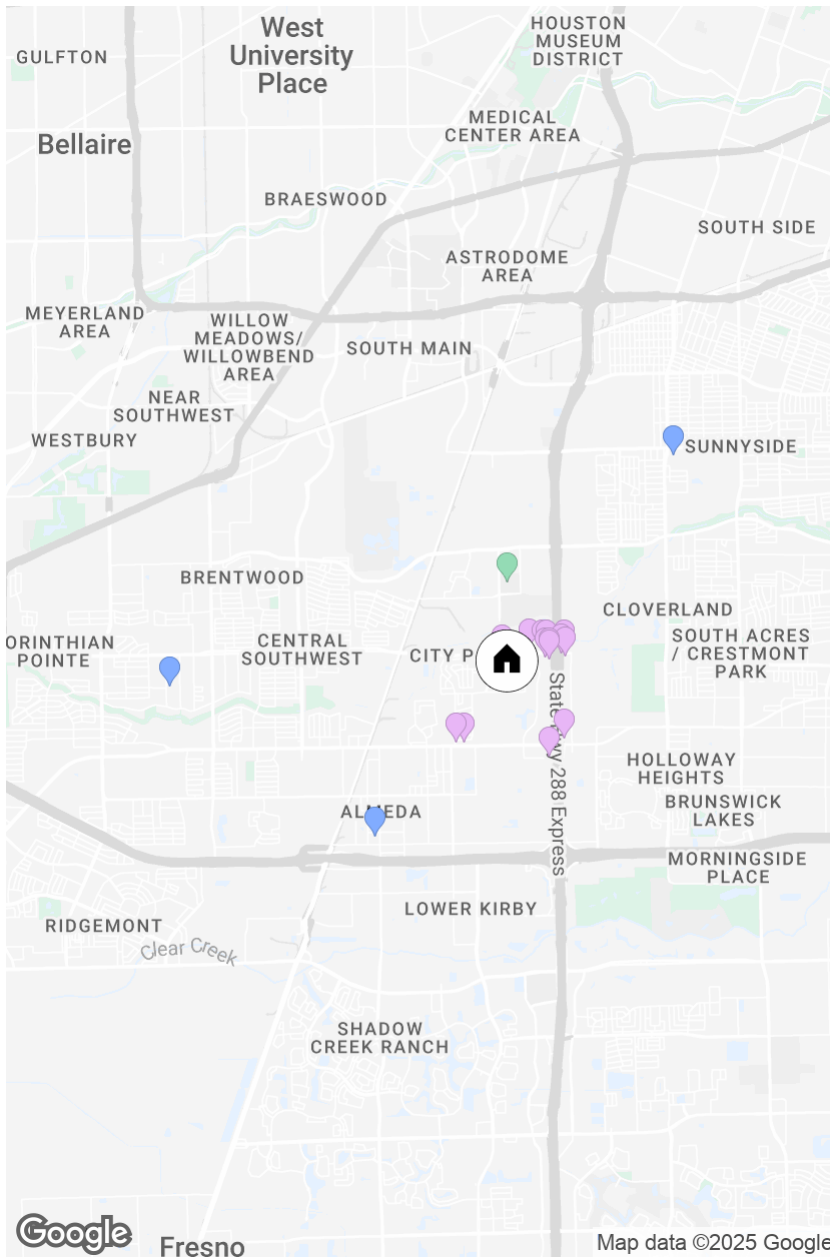
What else can you share with future buyers?

It's a great house that's been lovingly cared for. I hope it continues to be a happy home for its next owners.

11729 Jelicoe Drive

City Park

3 BD 2.5 BA 2132 SF



RESTAURANTS

- Mad Tacos Birria and More LLC, 0.09mi
- Domino's Pizza, 0.26mi
- Jack in the Box, 0.37mi
- Laredo Taco Company, 0.39mi
- Taco Bell, 0.41mi
- Whataburger, 0.43mi
- Chipotle Mexican Grill, 0.43mi
- Wingstop, 0.56mi
- QuikTrip, 0.60mi
- Starbucks, 0.60mi
- Red's Snow Wagon & More, 0.95mi

- McDonald's, 0.98mi
- Pardis (Food Truck), 0.99mi
- Subway, 1.07mi

PARKS

- Houston Sports Park, 0.81mi

SCHOOLS

- Almeda Elementary School, 2.26mi
- Worthing High School, 2.72mi
- Lawson Middle School, 3.49mi