

# WAVERLY TRAIL

710 Waverly Street



WYNNWOOD  
PROPERTIES



This beautifully renovated single-story home offers modern upgrades, spacious living, and a versatile backyard structure. With 3 bedrooms and 1/1 Bathrooms, it's move-in ready and ideal for families, professionals, or investors. Inside, hardwood flooring enhances the living room, hallway, and three bedrooms.

The updated kitchen includes new stainless steel appliances, granite countertops, white shaker-style cabinets, a pantry, and a breakfast bar. A key highlight is the bonus structure in the backyard, which includes electricity and a functioning bathroom and sink. Although not included in the total square footage, it offers endless possibilities as a home office, guest house, or storage space. Located near I-610, I-45, I-69, and Hardy Toll Road.



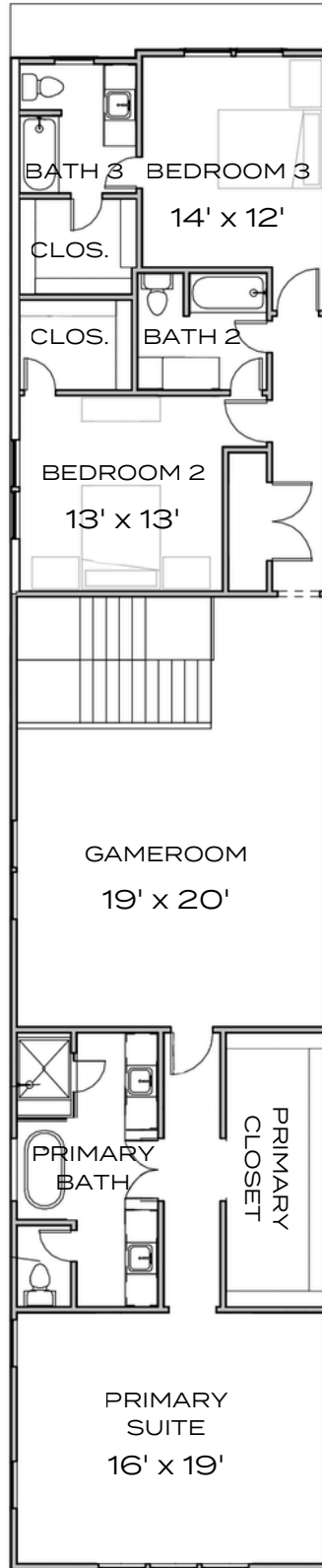
# FLOOR PLANS

---

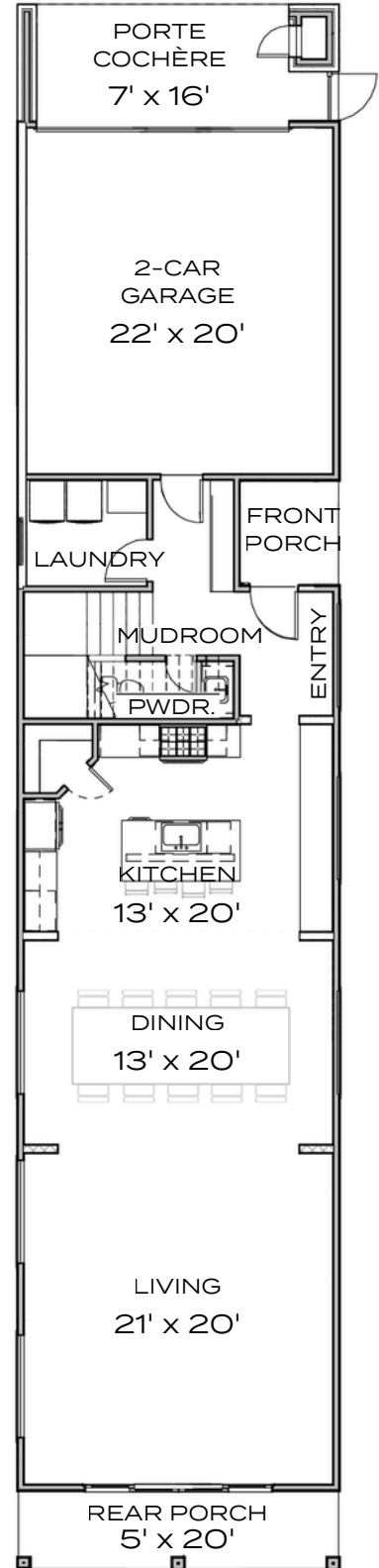
# Plan 1

3,103 sqft  
3 Bed, 3.5 Bath

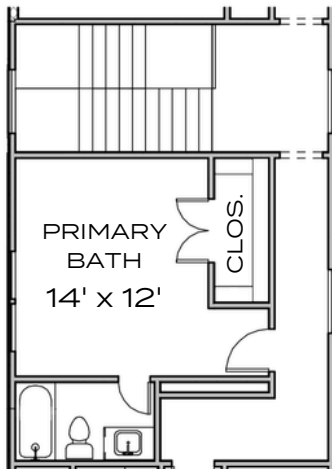
### Floor 2



### Floor 1



### 4th Bedroom Option



# SITEMAP

---

Waverly Trail



710 E

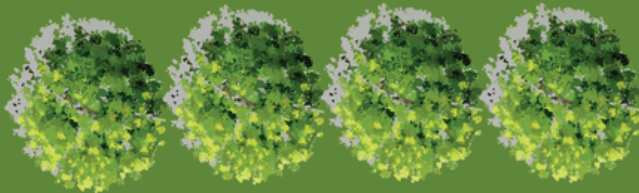
710 D

710 C

710 B

710 A

HIKE AND BIKE TRAIL



# SELECTIONS PACKAGE

---

# FINISH SELECTIONS

---

## Kitchen



- Kitchen Faucet
  - Kohler
  - Vibrant Brushed Moderne Brass



- Kitchen Pot Filler
  - Kohler
  - Vibrant Brushed Moderne Brass



- Refrigerator
  - Bertazzoni
  - Stainless Steel



- Range
  - Bertazzoni
  - Stainless Steel



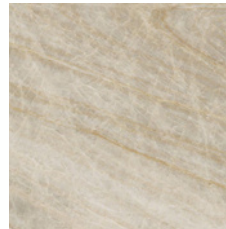
- Microwave
  - Bertazzoni
  - Stainless Steel



- Refrigerator
  - Bertazzoni
  - Stainless Steel



- Hood
  - Bertazzoni
  - Stainless Steel



- Kitchen Countertop
  - Natural Quartzite
  - Natural stone slab
  - Polished, Leather or Honed

# FINISH SELECTIONS

---

## Primary Bathroom



- Primary Bath Faucet
  - Kohler
  - Vibrant Brushed Moderne Brass



- Primary Bath Shower Package
  - Kohler
  - Kohler
  - Vibrant Brushed Moderne Brass



- Primary Bath Tub
  - Royal Paloma 67"



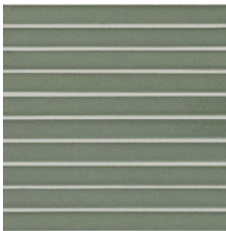
- Primary Bath Tub Filler
  - Kohler
  - Kohler
  - Vibrant Brushed Moderne Brass



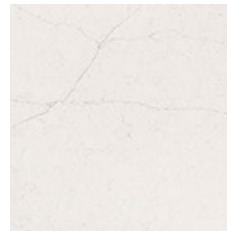
- Primary Bath Floor
  - Daltile



- Primary Bath Shower Floor
  - Floor and Décor



- Primary Bath Shower Wall
  - Floor and Décor



- Primary Bath Countertop
  - One Quartz
  - Marble look
  - Valor White

# FINISH SELECTIONS

---

## Bathrooms and Powder Rooms



- Bath 2 & 3 Shower Package
  - Kohler
  - Vibrant Polished Nickel



- Bath 2 & 3 Faucet
  - Kohler
  - Vibrant Polished Nickel



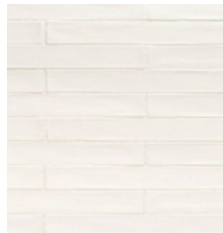
- Powder Faucet
  - Kohler
  - Vibrant Brushed Moderne Brass



- Utility Faucet
  - Kohler
  - Vibrant Brushed Moderne Brass



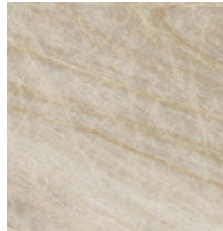
- Bath 2 & 3 Floor
  - Daltile



- Bath 2 & 3 Bath Wall
  - Floor and Décor



- Bath 2 & 3 Countertop
  - Marble look
  - Chateau
  - Polished



- Powder Room Countertop
  - Natural Quartzite
  - Natural stone slab
  - Polished, Leather or Honed



- Powder Sink

# FINISH SELECTIONS

---

## Lighting



- Kitchen Island Pendant
  - Hinkley
  - Heritage Brass
  - Etched Opal Glass



- Dining Room Chandelier
  - Hinkley
  - Wide 8 Light
  - Heritage Brass



- Primary Bath Vanity Light
  - Crue 4 Light 31" Wide
  - Kohler
  - Brushed Moderne Brass



- Bath 2 and Bath 3 Vanity Light
  - Kyra 4 Light
  - Hinkley
  - Polished Nickel



- Powder Room Vanity Light
  - Painted Glass Shades
  - Kohler
  - Brushed Moderne Brass



- Outdoor Wall Sconce
  - Light 18" Tall
  - Hinkley
  - Light Antique Brass



- Living Room Ceiling Fan
  - Hampton 56" 5 Blade Indoor Smart LED
  - Hinkley
  - Heritage Brass



- Primary Bedroom Ceiling Fan
  - Blade Smart LED Indoor
  - Hinkley
  - Heritage Brass



- Bedroom 2, Bedroom 3, and Gameroom Ceiling Fan
  - Blade Smart LED Indoor
  - Hinkley
  - Brushed Nickel

# FINISH SELECTIONS

## Hardware



- Front Door Handle
  - Emttek
  - Polished Nickel



- Amazon Closet
  - Schlage
  - Satin Nickel



- Interior Door Handles
  - Schlage
  - Polished Nickel



- Kitchen Knobs
  - Emttek
  - Polished Nickel
  - Satin Brass
  - Knurled



- Kitchen Pulls
  - Emttek
  - Polished Nickel
  - Satin Brass
  - Knurled



- Powder Bath Pulls
  - Emttek
  - Polished Nickel
  - Satin Brass
  - Knurled



- Powder Bath Toilet Paper Holder
  - Kohler
  - Vibrant Brushed
  - Moderne Brass



- Powder Bath Towel Ring
  - Kohler
  - Vibrant Brushed Moderne Brass



- Utility Room Pulls
  - Top Knobs
  - Polished Nickel



- Primary Bath Pulls
  - Emttek
  - Polished Nickel
  - Satin Brass
  - Knurled



- Primary Bath Knobs
  - Emttek
  - Polished Nickel
  - Satin Brass
  - Knurled



- Primary Bath Towel Bar
  - Kohler
  - Vibrant Brushed Moderne Brass



- Primary Bath Toilet Paper Holder
  - Kohler
  - Vibrant Brushed Moderne Brass



- Primary Bath Towel Ring
  - Kohler
  - Vibrant Brushed Moderne Brass



- Primary Bath Towel Hooks
  - Kohler
  - Vibrant Brushed Moderne Brass



- Bath 2 Pulls
  - Polished Nickel

# FINISH SELECTIONS

---

## Hardware



- Bath 2 Towel Bar
  - Polished Nickel



- Bath 2 Pulls
  - Polished Nickel



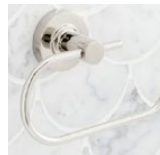
- Bath 2 Towel Ring
  - Polished Nickel



- Bath 2 Toilet Paper Holder
  - Polished Nickel



- Bath 3 Pulls
  - Top Knobs
  - Polished Nickel



- Bath 3 Toilet Paper Holder
  - Polished Nickel



- Bath 3 Towel Bar
  - Polished Nickel



- Bath 3 Toilet Paper Holder
  - Polished Nickel

# FINISH SELECTIONS

---

## Flooring

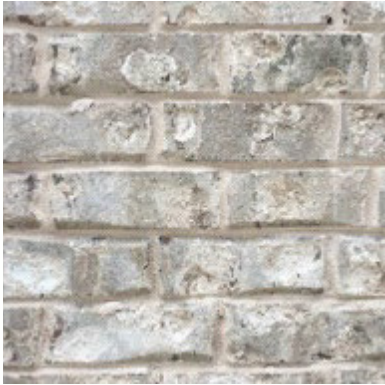


- Everywhere Except Bath Areas
  - Palladio Whiskey #58754T

# FINISH SELECTIONS

---

## Exterior



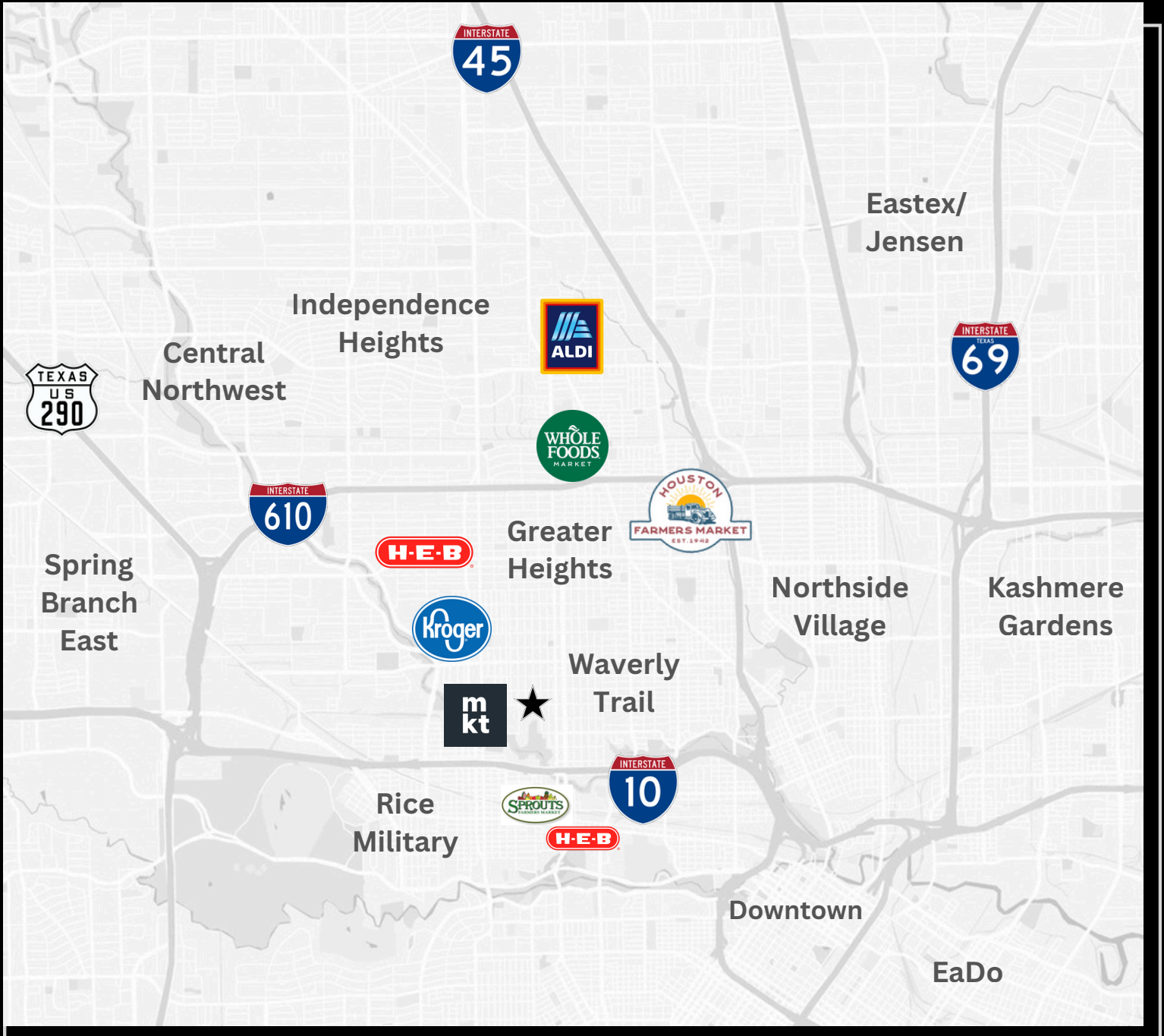
- Cherokee Brick
  - Georgia Classic
  - Ansley Park
  - White



- Exterior Roof Shingles
  - Atlas
  - ProLam
  - Hearthstone

# COMMUNITY

---



# LOCATION AMENITIES

---

## Entertainment/Shopping

MKT Heights

600 N Shepherd Dr

Heights Marketplace

428-516 W 19th St

## Groceries

HEB

2300 N Shepherd Dr

Kroger

1035 N Shepherd Dr

Whole Foods

101 N Loop W

Sprouts Farmers Market

195 Yale St Ste 100

## Parks

Stude Park

1031 Stude St

Lawrence Park

725 Lawrence St

West 11<sup>th</sup> Park

2400 W 11<sup>th</sup> St

# LOCATION AMENITIES

---

## Schools

HISD De Chaumes Elementary School  
Fonville Middle School  
Houston Math, Science, and Technology  
Center High School

155 Cooper Rd  
725 E Little York Rd  
9400 Irvington Blvd

## Community Utilities

Police  
Fire  
Post Office  
Telephone and Cable (AT&T)  
Telephone and Cable (Xfinity)

61 Riesner St  
460 T C Jester Blvd  
1300 W 19th St #7265  
1533 N Shepherd Dr Ste 140  
1901 Taylor St B

## Hospital

The Heights Hospital  
Waverly Trail is 20 mins from Med Center

1917 Ashland St

# LOCATION AMENITIES

---

## **Taxes**

Tax rate

2.0924%



# SALES INFORMATION



Natalie Garza

REALTOR

CELL: 713.344.8764

OFFICE: 832.696.5779

SALES@WYNNWOODGROUP.COM

---

Preferred Lender:  
Mitchell Mortgage Group

Paul Mitchell  
281.687.1014  
paul@paulmitchellmortgage.com

Click Below to  
Pre-Qualify:

[\*\*CLICK HERE!\*\*](#)

# Submit an offer today!

## 1. Click the Link

Open the link to the form provided.

## 2. Enter Your Information

Fill in the required details (name, email, project info, etc.)

## 3. Submit the Form

Tap the “Submit” or “Send” button at the bottom.

## 4. Wait for the Offer

After submitting, the contract writer will review your info and send you an offer to consider.

**[CLICK HERE!](#)**





Transforming Lives  
and Communities  
Through Real Estate

# WYNNWOOD

PROPERTIES



[www.wynnwoodgroup.com](http://www.wynnwoodgroup.com)

Disclaimer: Buyer acknowledges that selections may not represent exactly the Property. Selections are subject to change depending on availability, changes in design and components made after the construction of the property. Seller, at seller's discretion, reserves the right to change selections and specifications without notification. The Selection package supersedes any property description including but not limited to property websites, floor plans, marketing campaigns, multiple listing services, social media campaigns, etc.