



ARTAVIA

BY AIRIA DEVELOPMENT® COMPANY

18414 MADRIGAL MORNING



4,000 SQ. FT. ON OVER 11,000 SQ. FT. LOT

- Dynamic 1-Story Design with 4 Bedrooms, 3.1 Baths, and a split 3-Car Garage
- Home backs to a Greenbelt - offering privacy
- Dramatic Living Area with vaulted ceiling, linear gas fireplace and Entertaining Bar
- Well-appointed Kitchen with high-end appliances including a drop-in 5-burner cooktop with single oven/microwave combo, walk-in pantry with proximity to Storage Room
- Dining Area has views of the Backyard and access to Back Porch - perfect for Indoor/Outdoor Entertaining!
- Primary Bedroom with gambrel ceiling, Bath with separate vanities, deep soaking bathtub, and grand closet with convenient access to Utility Room
- All Jamestown Homes in the ARTAVIA Community have Spray Foam Attic Insulation, Tankless Water Heater(s) and Uponor PEX Water Lines

Tauny Prejeant, CSP

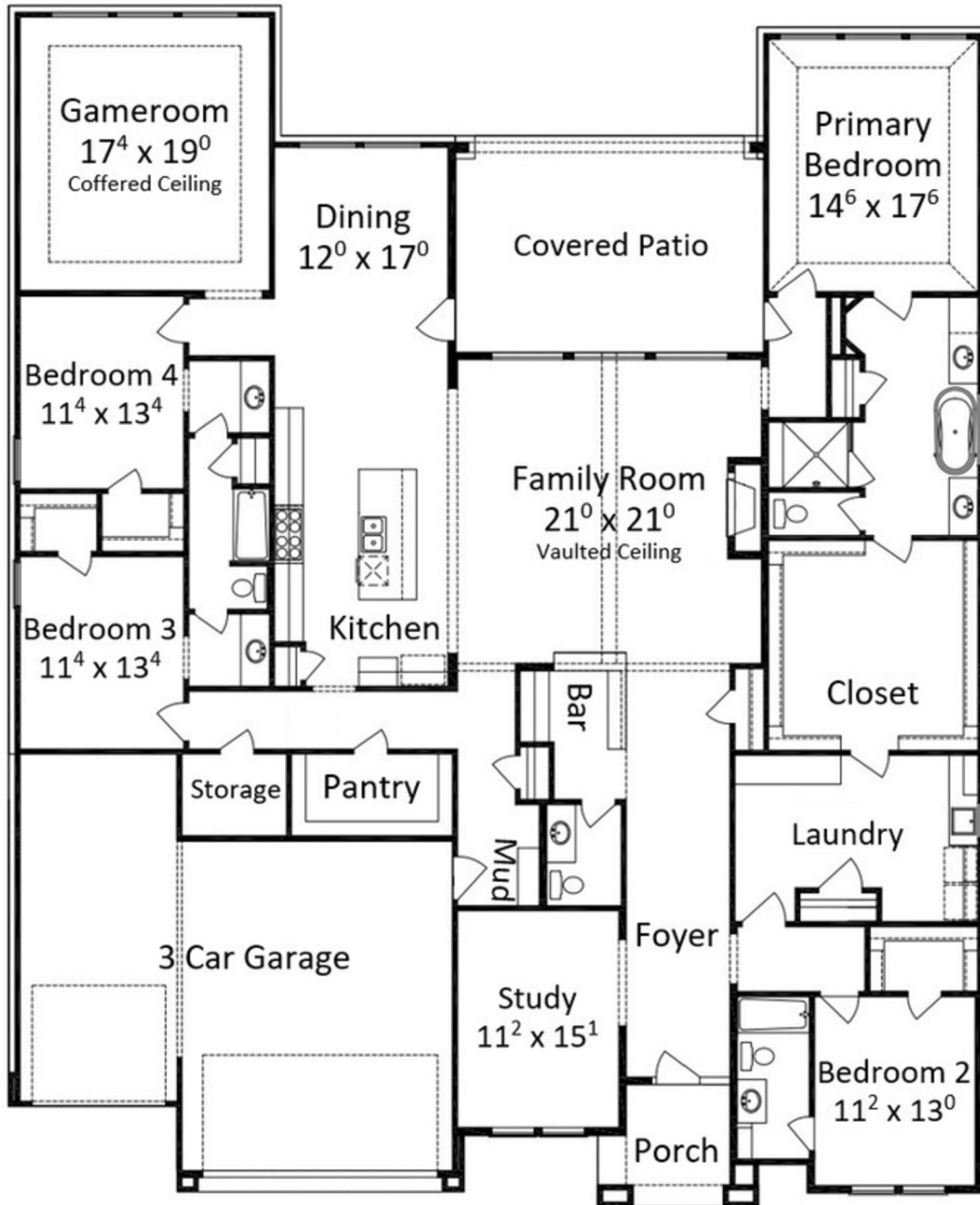
Tauny.Prejeant@JamestownEstateHomes.com

832.568.4649

Jamestown
ESTATE • HOMES

18414 Madrigal Morning ♦ Conroe, TX 77302

4,000 SQUARE FEET 4 BEDROOM/3.1 BATH, WITH SPLIT 3-CAR GARAGE



Copyright Jamestown Estate Homes 2025. Subject to change. Photographs, renderings, and floor plans are intended to represent the overall design concept. Final home details, materials, and dimensions may vary.

