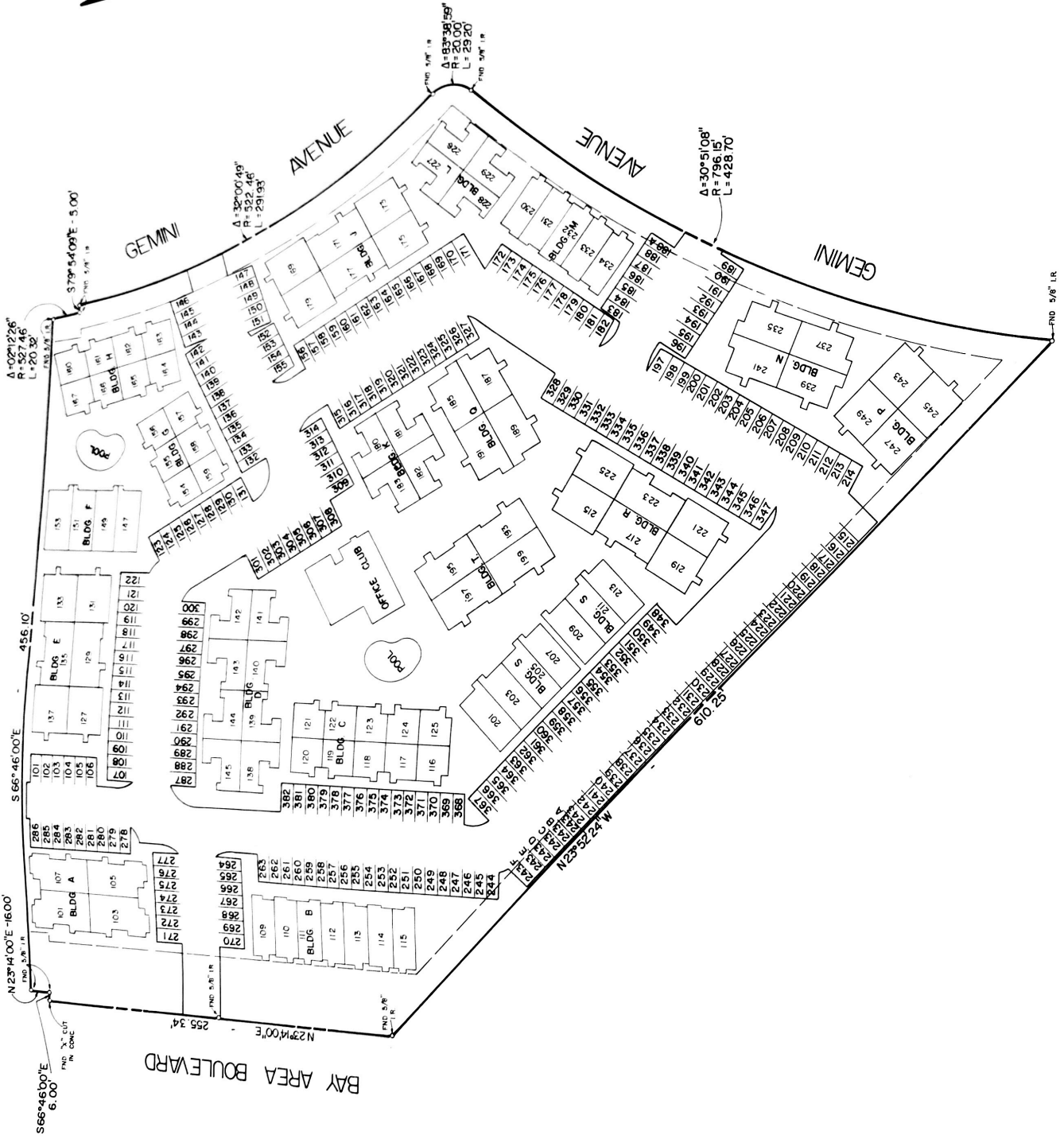
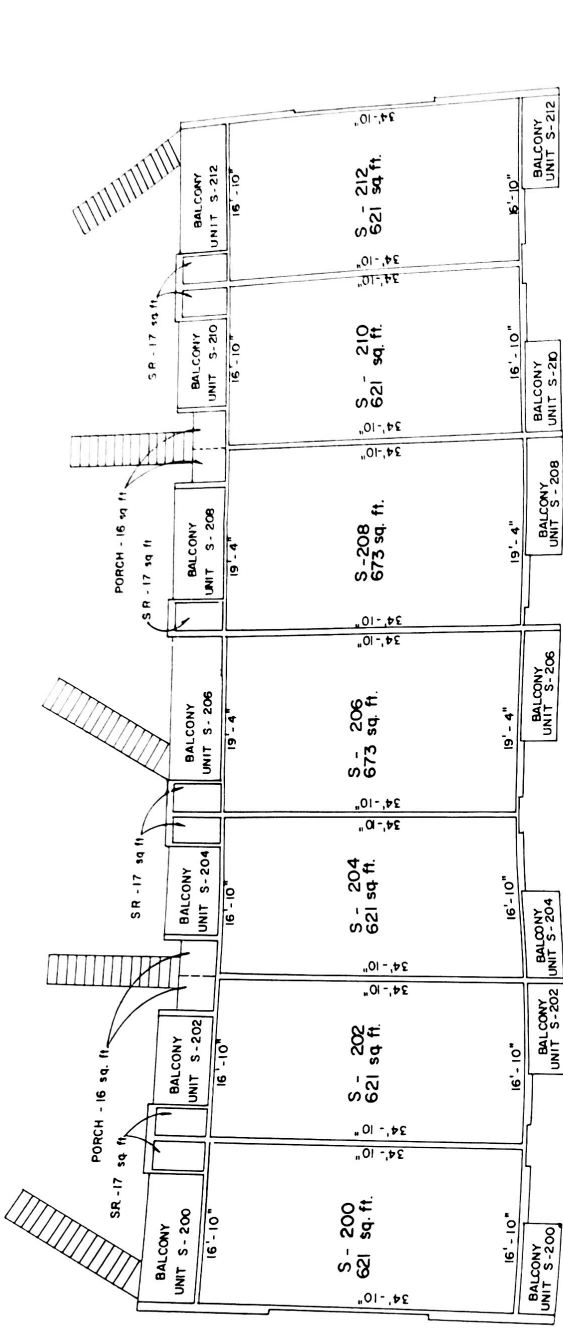


UNIVERSITY GREEN BOULEVARD

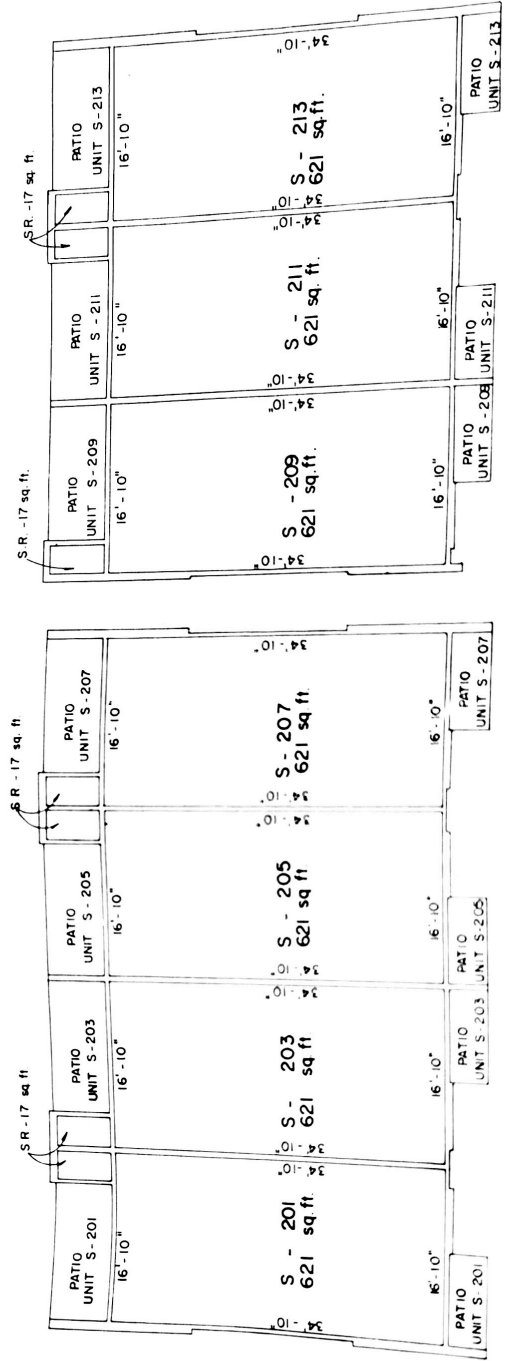


UNIVERSITY TRACE
 OF 6.0355 ACRES
 LYING IN: SARAH DEEL LEAGUE, A-13
 LOCATED: AT THE INTERSECTION OF
 UNIVERSITY GREEN BOULEVARD
 AND BAY AREA BOULEVARD.
 BEING IN: CLEAR LAKE CITY INDUSTRIAL
 PARK, SECTION "A", HARRIS
 COUNTY, TEXAS.

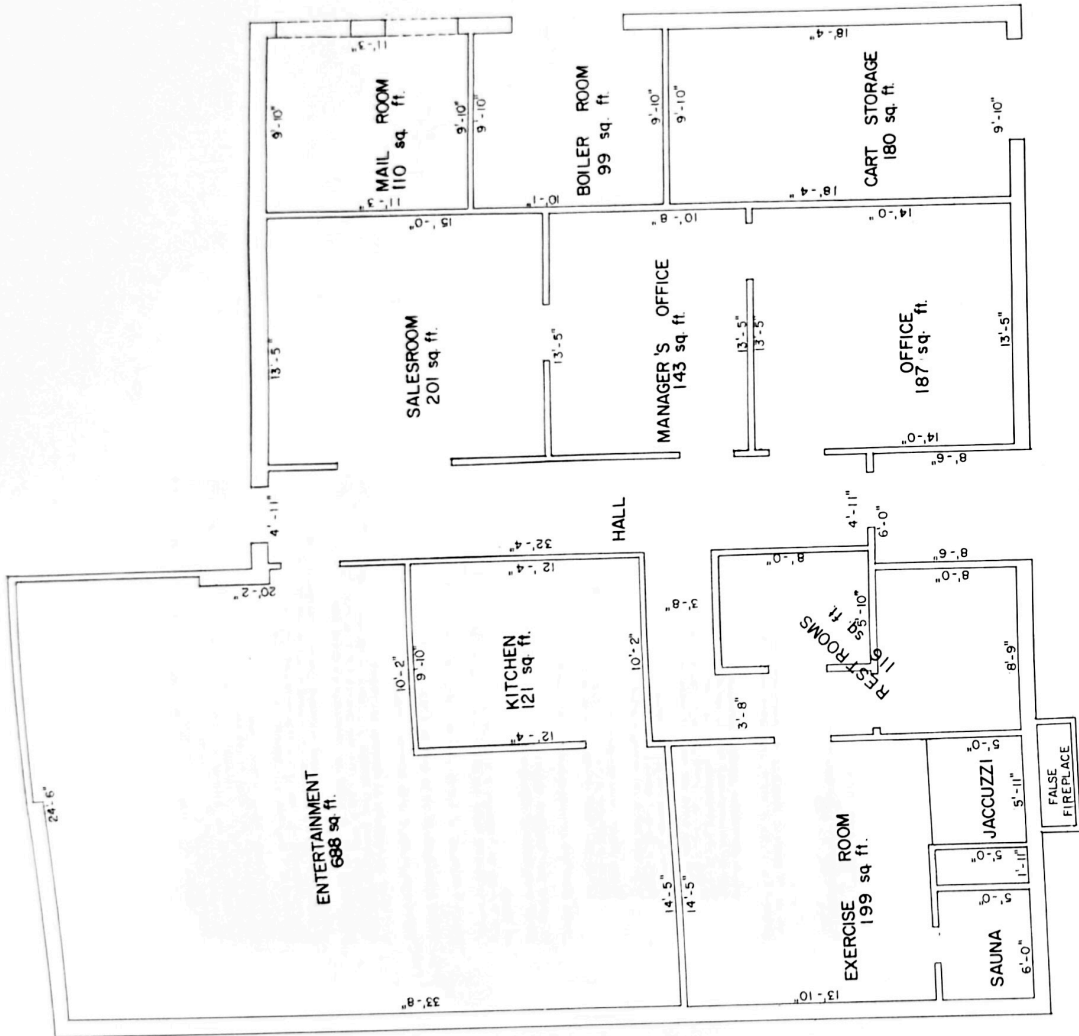
PHD 5/8" I.R.



SECOND FLOOR BUILDING S



FIRST FLOOR BUILDING S



CLUB 8 OFFICE



UNIVERSITY TRACE
 CLUB 8 OFFICE
POWERS ENGINEERING
 CONROE, TEXAS 77385
 435 CYPRESS PROJECT NO. T-30009
 SCALE 1/4" = 1'-0"
 DATE 11-1-79 SHEET 18 OF 20