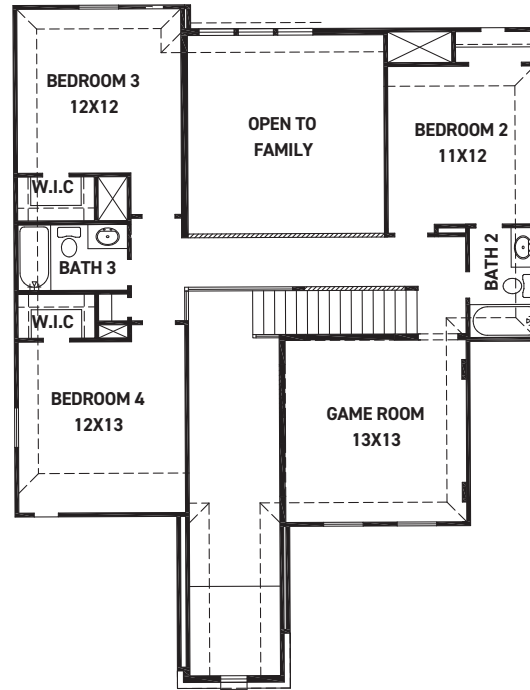
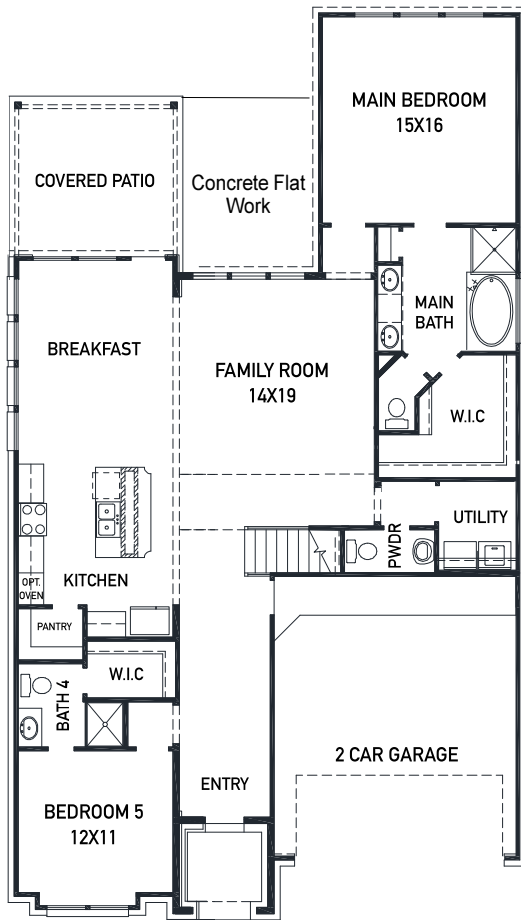


N

31127 Marlow Manor Ct. - Heidelberg Plan Cross Creek West 50'



FIRST FLOOR PLAN

SECOND FLOOR PLAN

FEATURES

- 2 Story - Apx: 2833 sqft.
- 5 Bedrooms - 4.5 Bathrooms
- 2 Car Garage

- Professionally designed w/ a modern appeal
- Upgraded front elevation with brick & stucco
- Built in appliances w/ a 36" gas cook-top
- 42" stacked kitchen cabinetry w/ hardware
- Porcelain counter tops in the kitchen
- Elegant hardwoods in the main living areas
- Fridge, washer, dryer, blinds included!

- THE NEWMARK STANDARD IN CROSS CREEK WEST
- Open cell spray foam insulation
- 16 seer duel stage HVAC system
- Full sprinkler system & sod
- Full rain gutters
- 3rd party inspections (Foundation, frame, energy, final)
- 2 year Energy Ogre Membership

Andrew Turco
713-825-4914

aturco@newmarkhomes.com



These drawings are conceptual only and are for the convenience of reference. They should not be relied upon as representations, express or implied, of the final detail of the residences. The builder expressly reserves the right to make modifications, revisions, and changes it deems desirable in its sole and absolute discretion. Dimensions and square footages are approximate and may vary with actual construction.