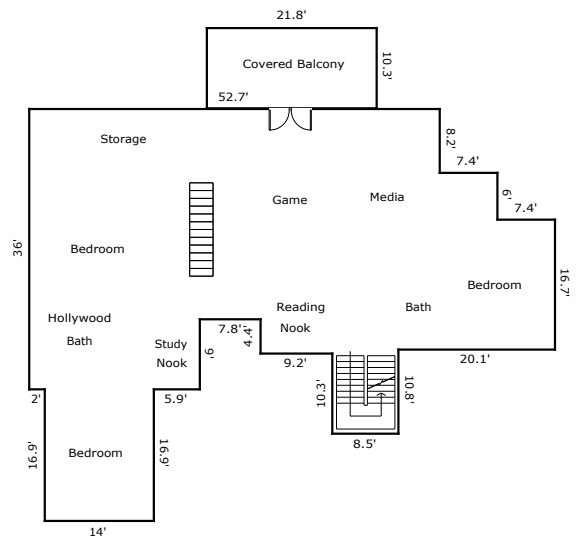
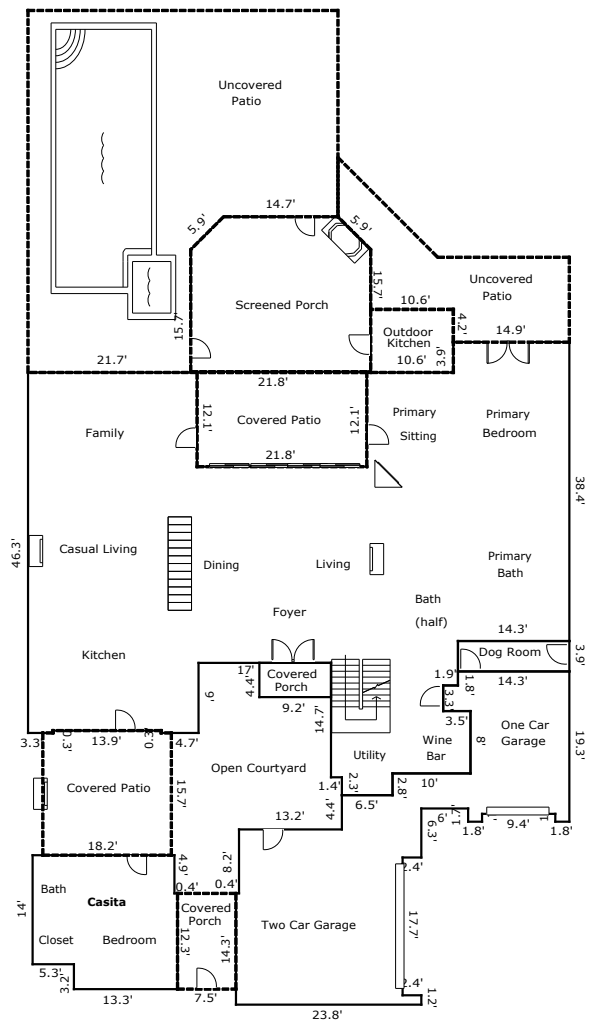


Building Sketch (Page - 1)

Borrower				
Property Address 146 Bauer Point Cir				
City	Spring	County	State	TX
Lender/Client			Zip Code	77389



TOTAL Sketch by a la mode

Building Sketch (Page - 2)

Borrower				
Property Address 146 Bauer Point Cir				
City	Spring	County	State TX	Zip Code 77389
Lender/Client				

TOTAL Sketch by a la mode

Area Calculations Summary

Living Area	Calculation Details		
First Floor	2796.5 Sq ft		
		38.4×14.3	= 549.1
		8×3.5	= 28
		6.5×2.3	= 15
		0.6×3.9	= 2.3
		21.7×12.1	= 262.6
		11.7×12.1	= 141.6
		55.2×25.2	= 1391
		9×4.7	= 42.3
		8.7×13.9	= 120.9
		3.3×9	= 29.7
		2.9×1.9	= 5.5
		14.4×14.2	= 204.5
		7.9×0.5	= 4
Second Floor	2334.3 Sq ft		
		14×16.9	= 236.6
		16.7×7.4	= 123.6
		22.7×7.4	= 168
		30.9×5.3	= 163.8
		41.7×8.5	= 354.4
		31.4×9.2	= 288.9
		27×7.8	= 210.6
		36×21.9	= 788.4
Total Living Area (Rounded):	5131 Sq ft		
Non-living Area			
Covered Patio	92.3 Sq ft	12.3×7.5	= 92.2
Casita	301 Sq ft	14×5.3	= 74.2
		13.3×12.3	= 163.6
		12.9×4.9	= 63.2
Covered Patio	263.2 Sq ft	16.5×15.7	= 259
		0.3×13.9	= 4.2
Covered Patio	85.9 Sq ft	10.6×8.1	= 85.9
Screened Porch	442 Sq ft	23.1×15.7	= 362.7
		14.7×4.2	= 61.7
		$0.5 \times 4.2 \times 4.2$	= 8.8
		$0.5 \times 4.2 \times 4.2$	= 8.8
3 Car Attached	824 Sq ft	14.3×1.8	= 25.7
		16.2×3.3	= 53.5
		12.7×8	= 101.6
		6.2×1.8	= 11.2
		5.2×9.4	= 48.9
		6.2×1.8	= 11.2
		4.5×6	= 27
		3.7×2.8	= 10.4
		8×2.4	= 19.2
		1.2×2.4	= 2.9
		21.4×14.3	= 306
		8.2×13.2	= 108.2
		7.8×12.6	= 98.3
Open Porch	40.5 Sq ft	9.2×4.4	= 40.5
Covered Patio	263.8 Sq ft	12.1×21.8	= 263.8
Dog Room	55.8 Sq ft	3.9×14.3	= 55.8
Covered Balcony	224.5 Sq ft	21.8×10.3	= 224.5