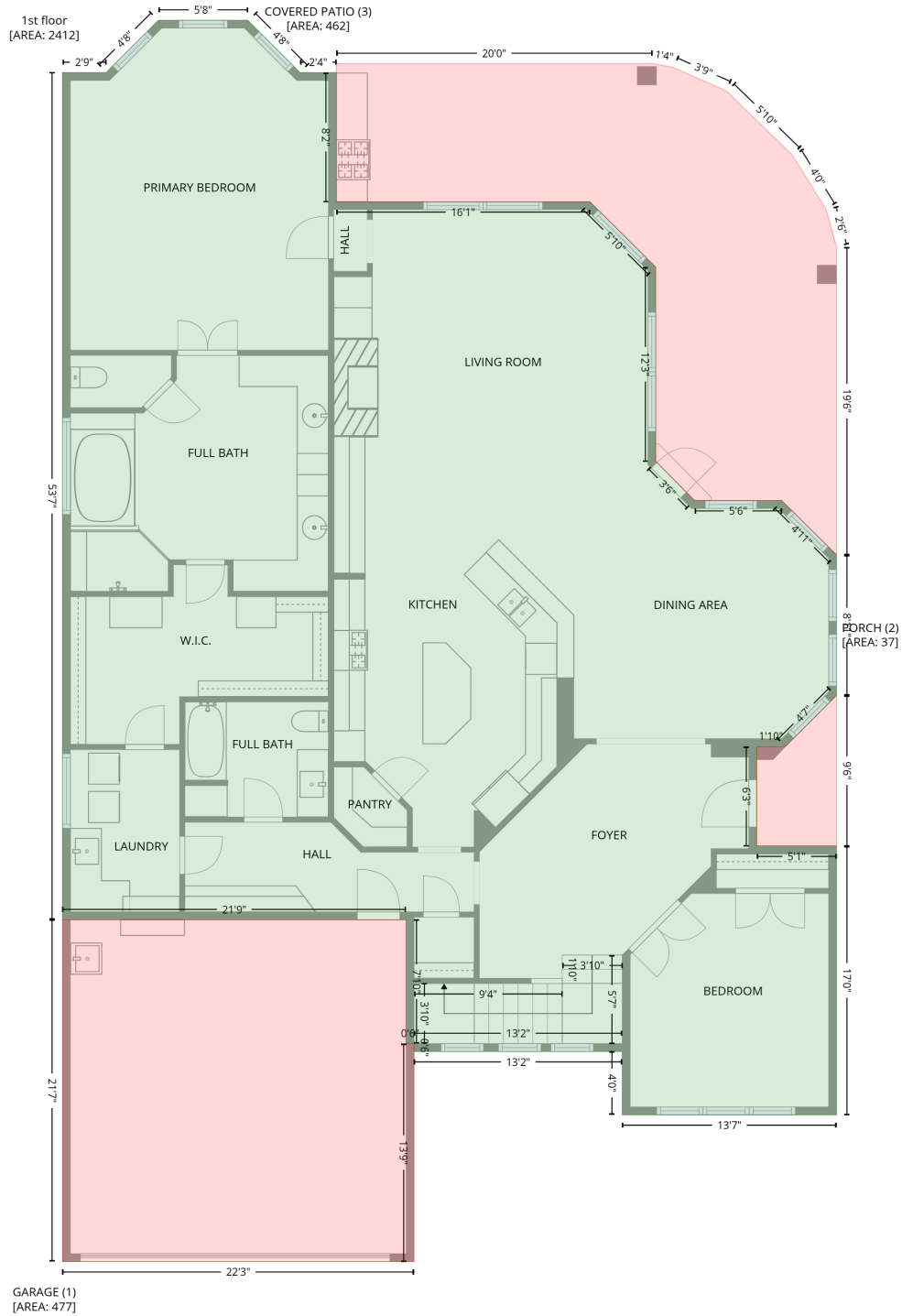


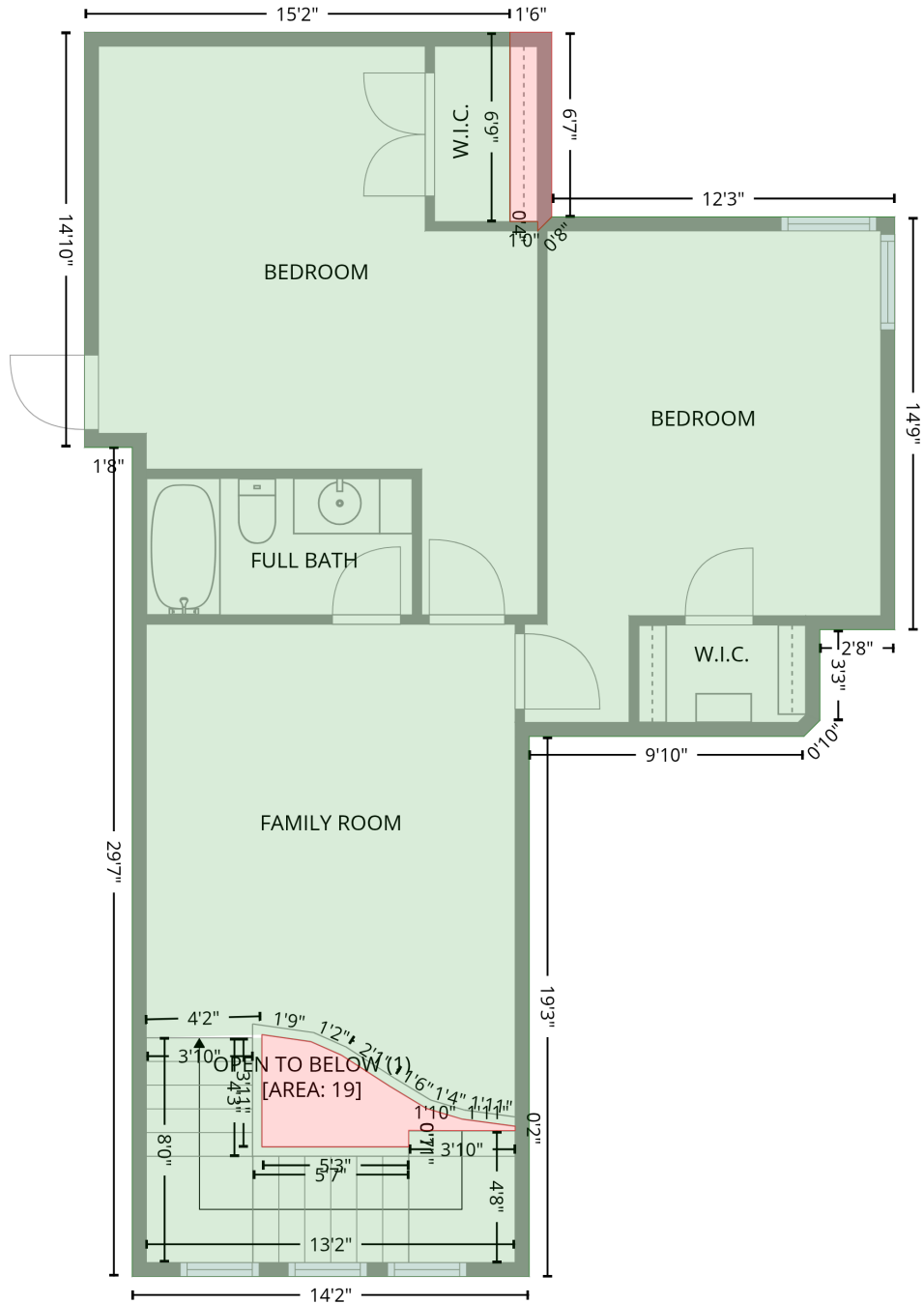
1st_floor_1930_old_river_road_montgomery



2nd_floor_1930_old_river_road_montgomery

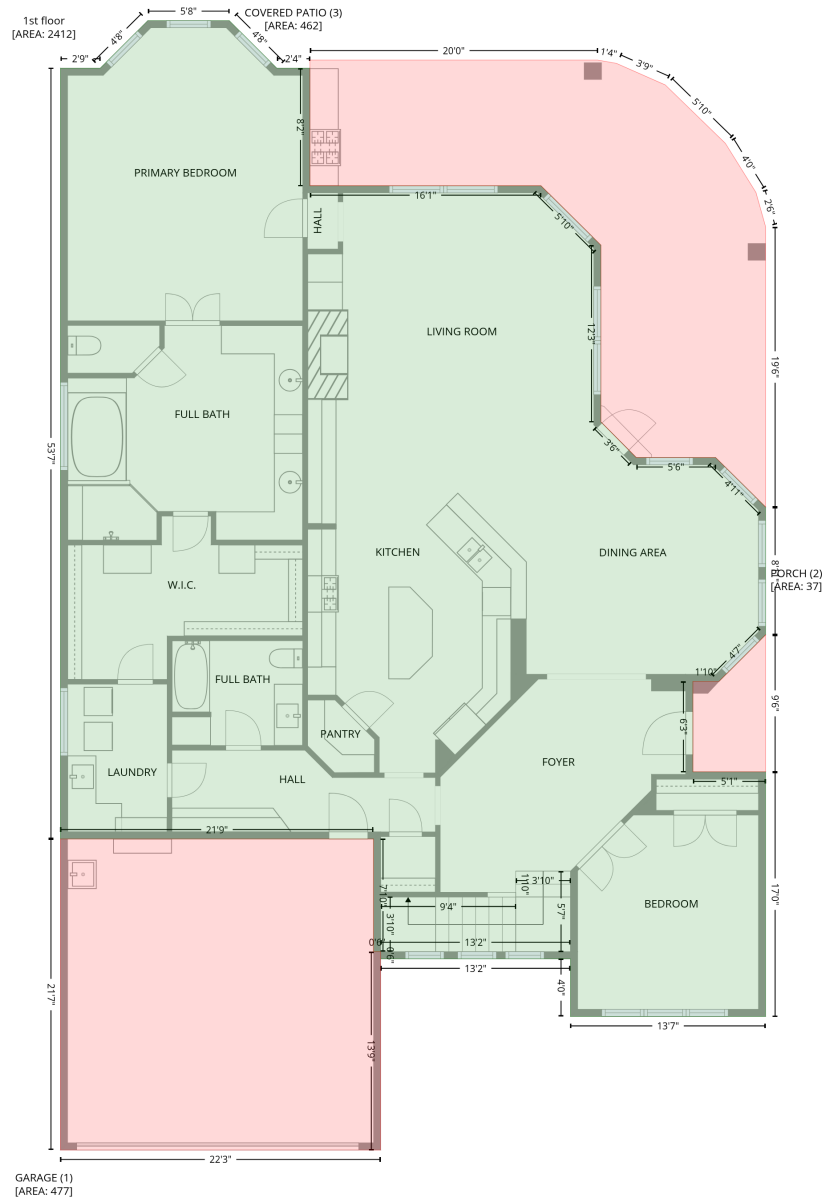
2nd floor
[AREA: 863]

LOW CEILING (2)
[AREA: 10]



Gross Living Area: 3275 sq. ft

Level 1



1930 Old River Road, Lake Conroe, Montgomery, Montgomery County, Texas, United States, 77356

Jointly e-verify: joint.ly/ver/S3j2-J5Xp-ttXX-sHSM

Gross Living Area: 3275 sq. ft

Level 1

Space	Area (sq. ft)	Calculation <small>Coordinate Polygon Area Algorithm using inches</small>
1st floor (Living area)	2412	$ \begin{aligned} & -((314.2 + 381.9) * (-49.4 - -49.4) + (381.9 + 421.7) * (-49.4 - -9.7) + (421.7 + 449.2) * (-9.7 - -9.7) \\ & + (449.2 + 449.2) * (-9.7 - 88.4) + (449.2 + 641.8) * (88.4 - 88.4) + (641.8 + 691.8) * (88.4 - 138) + \\ & (691.8 + 691.8) * (138 - 285.4) + (691.8 + 721.3) * (285.4 - 315.1) + (721.3 + 787.4) * (315.1 - \\ & 315.1) + (787.4 + 829.1) * (315.1 - 356.4) + (829.1 + 829.1) * (356.4 - 463) + (829.1 + 790.2) * \\ & (463 - 501.9) + (790.2 + 768.5) * (501.9 - 501.9) + (768.5 + 768.5) * (501.9 - 577.3) + (768.5 + \\ & 829.1) * (577.3 - 577.3) + (829.1 + 829.1) * (577.3 - 781.4) + (829.1 + 666.4) * (781.4 - 781.4) + \\ & (666.4 + 666.4) * (781.4 - 733.3) + (666.4 + 508.3) * (733.3 - 733.3) + (508.3 + 508.3) * (733.3 - \\ & 727.3) + (508.3 + 502.3) * (727.3 - 727.3) + (502.3 + 502.3) * (727.3 - 633.3) + (502.3 + 241.2) * \\ & (633.3 - 633.3) + (241.2 + 241.2) * (633.3 - -9.7) + (241.2 + 274.4) * (-9.7 - -9.7) + (274.4 + 314.2) \\ & * (-9.7 - -49.4)) * 0.5 * 0.00694 \end{aligned} $
GARAGE (Non-living area)	477	$ \begin{aligned} & -((502.3 + 502.3) * (633.3 - 727.3) + (502.3 + 508.3) * (727.3 - 727.3) + (508.3 + 508.3) * (727.3 - \\ & 892.8) + (508.3 + 241.2) * (892.8 - 892.8) + (241.2 + 241.2) * (892.8 - 633.3) + (241.2 + 502.3) * \\ & (633.3 - 633.3)) * 0.5 * 0.00694 \end{aligned} $
PORCH (Non-living area)	37	$ \begin{aligned} & -((829.1 + 829.1) * (463 - 577.3) + (829.1 + 768.5) * (577.3 - 577.3) + (768.5 + 768.5) * (577.3 - \\ & 501.9) + (768.5 + 790.2) * (501.9 - 501.9) + (790.2 + 829.1) * (501.9 - 463)) * 0.5 * 0.00694 \end{aligned} $
COVERED PATIO (Non-living area)	462	$ \begin{aligned} & -((689.1 + 704.7) * (-16.5 - -13.7) + (704.7 + 745.4) * (-13.7 - 4.3) + (745.4 + 795.6) * (4.3 - 53) + \\ & (795.6 + 821) * (53 - 94) + (821 + 829.1) * (94 - 122.7) + (829.1 + 829.1) * (122.7 - 356.4) + \\ & (829.1 + 787.4) * (356.4 - 315.1) + (787.4 + 721.3) * (315.1 - 315.1) + (721.3 + 691.8) * (315.1 - \\ & 285.4) + (691.8 + 691.8) * (285.4 - 138) + (691.8 + 641.8) * (138 - 88.4) + (641.8 + 449.2) * (88.4 \\ & - 88.4) + (449.2 + 449.2) * (88.4 - -16.5) + (449.2 + 689.1) * (-16.5 - -16.5)) * 0.5 * 0.00694 \end{aligned} $

1930 Old River Road, Lake Conroe, Montgomery, Montgomery County, Texas, United States, 77356

Jointly e-verify: joint.ly/ver/S3j2-J5Xp-ttXX-sHSM

Gross Living Area: 3275 sq. ft

Level 2

Space	Area (sq. ft)	Calculation <small>Coordinate Polygon Area Algorithm using inches</small>
2nd floor (Living area)	863	$-\left((664.2 + 664.2) * (200.2 - 281.3) + (664.2 + 676.1) * (281.3 - 281.3) + (676.1 + 676.1) * (281.3 - 285.3) + (676.1 + 682.1) * (285.3 - 279.3) + (682.1 + 829.1) * (279.3 - 279.3) + (829.1 + 829.1) * (279.3 - 456.2) + (829.1 + 797) * (456.2 - 456.2) + (797 + 797) * (456.2 - 495) + (797 + 790.2) * (495 - 501.9) + (790.2 + 672.4) * (501.9 - 501.9) + (672.4 + 672.4) * (501.9 - 733.3) + (672.4 + 502.3) * (733.3 - 733.3) + (502.3 + 502.3) * (733.3 - 378.1) + (502.3 + 481.8) * (378.1 - 378.1) + (481.8 + 481.8) * (378.1 - 200.2) + (481.8 + 664.2) * (200.2 - 200.2) * 0.5 * 0.00694 - ((557.8 + 508.3) * (629.7 - 631) + (508.3 + 557.8) * (631 - 631) + (557.8 + 557.8) * (631 - 677.8) + (557.8 + 620.8) * (677.8 - 677.8) + (620.8 + 620.8) * (677.8 - 670.8) + (620.8 + 666.4) * (670.8 - 670.8) + (666.4 + 666.4) * (670.8 - 668.9) + (666.4 + 643.8) * (668.9 - 665.9) + (643.8 + 628.5) * (665.9 - 661.4) + (628.5 + 612.7) * (661.4 - 651.8) + (612.7 + 592) * (651.8 - 638.5) + (592 + 578.9) * (638.5 - 632.7) + (578.9 + 557.8) * (632.7 - 629.7)) * 0.5 * 0.00694$
OPEN TO BELOW (Non-living area)	19	$-\left((557.8 + 578.9) * (629.7 - 632.7) + (578.9 + 592) * (632.7 - 638.5) + (592 + 612.7) * (638.5 - 651.8) + (612.7 + 628.5) * (651.8 - 661.4) + (628.5 + 643.8) * (661.4 - 665.9) + (643.8 + 666.4) * (665.9 - 668.9) + (666.4 + 666.4) * (668.9 - 670.8) + (666.4 + 643) * (670.8 - 670.8) + (643 + 620.8) * (670.8 - 670.6) + (620.8 + 620.8) * (670.6 - 677.8) + (620.8 + 557.8) * (677.8 - 677.8) + (557.8 + 557.8) * (677.8 - 629.7)) * 0.5 * 0.00694$
LOW CEILING (Non-living area)	10	$-\left((682.1 + 682.1) * (200.2 - 279.3) + (682.1 + 676.1) * (279.3 - 285.3) + (676.1 + 676.1) * (285.3 - 281.3) + (676.1 + 664.2) * (281.3 - 281.3) + (664.2 + 664.2) * (281.3 - 200.2) + (664.2 + 682.1) * (200.2 - 200.2)) * 0.5 * 0.00694$