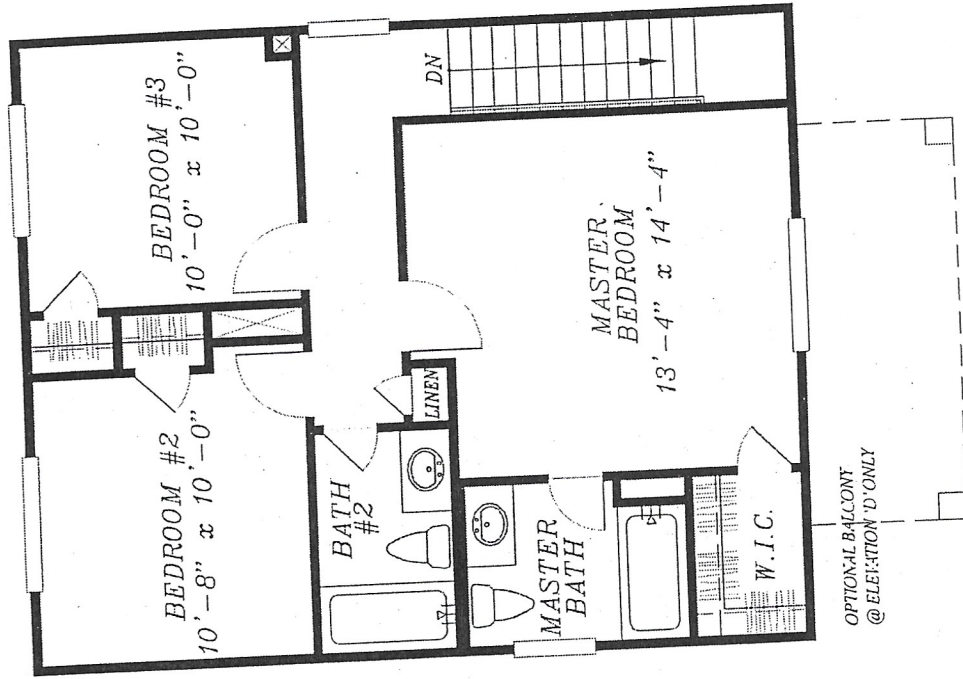
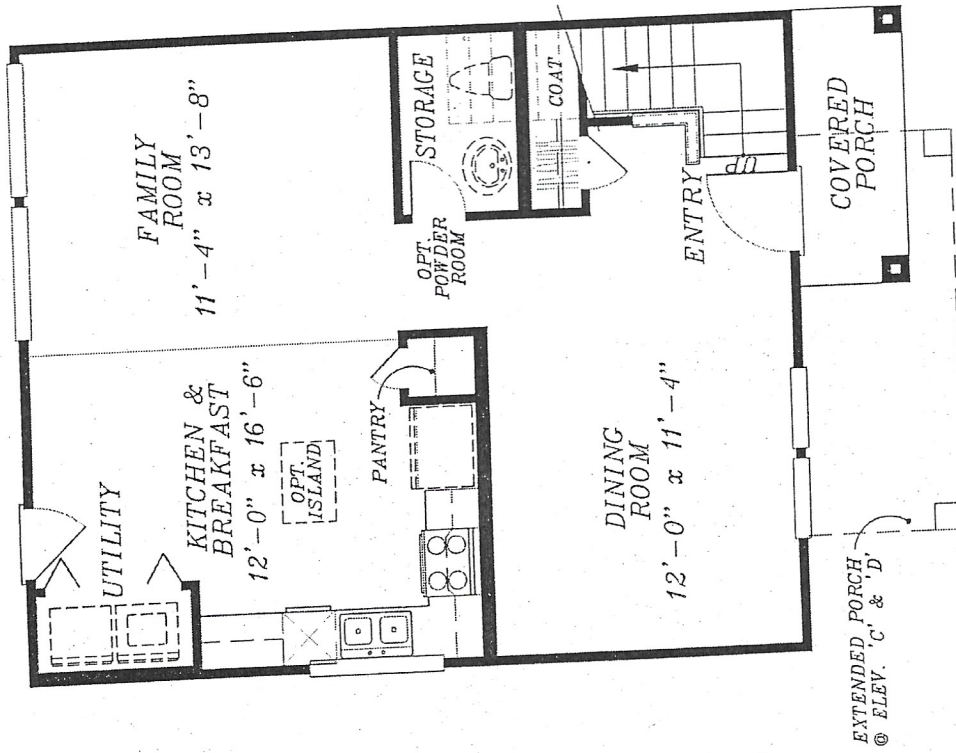


The Bayberry II

Plan #A202



SECOND FLOOR



FIRST FLOOR



Floor plans, room sizes, elevations and actual price may vary based on the option selected. The builder reserves the right to modify plans, specifications, and prices at any time without prior notification.



Parkside Series @ Park at Meadowhill

~ Bungalow Home Features ~
(281) 651-1830, khov.com

ENERGY SAVING FEATURES

- High efficiency, 14 SEER air conditioning system
- 85% efficient natural gas furnace
- R-30 blown attic insulation in flat ceilings
- Foil-backed air conditioning duct
- Ductwork with an R-6 Rating
- Weatherization measures around the slab, windows, and exterior doors to reduce air infiltration
- Insulated low-E double pane white windows with screens on operable windows. Windows contain coating that blocks 83% of the sun ultraviolet rays and 96% of the suns infrared heat
- 40 (approximate) gallon high efficiency gas water heater
- Gas and electric dryer hook ups with outside vent

CONSTRUCTION FEATURES

- Tongue in groove subflooring glued with ring shank nails and screwed
- 7/16" OSB roof decking
- 210 lb. 20-year roof shingles over 15 lb. felt
- 100 Amp. electrical service
- All copper interior electrical wiring
- BF Goodrich flow guard gold plumbing pipe
- Exterior satin acrylic paints and primer
- Exterior color selections by a national, award-winning design firm
- National 10 year limited warranty protection administered by Professional Warranty Service Corporation

KITCHEN FEATURES

- GE white on white appliance package including gas range oven, vent hood with light, and energy efficient 5 cycle dishwasher
- Stainless steel double sink with Moen single handle faucet, heavy duty garbage disposal and vegetable sprayer
- Oak Cabinetry with framed flat panel doors
- Custom applied Wilsonart laminate counter tops with 4" backsplash
- No wax vinyl flooring
- Pre-installed ice maker plumbing
- Fluorescent lighting in work areas

EXCEPTIONAL UPGRADES

- Distinctive traditional brick elevations
- Ceiling fans and ceiling fan prewires
- Additional phone, cable, electrical prewires
- Light kits for ceiling fans
- 42" upper kitchen cabinets
- GE microwave oven and exhaust
- Nine (9) foot first floor ceiling height
- Kitchen island and refrigerator cabinets
- Carpet, vinyl and/or wood flooring upgrades
- Study options per plan
- Computer desk per plan
- Six-panel interior doors
- Granite kitchen countertops

DISTINCTIVE EXTERIORS

- Hardiplank siding with 50 year limited manufacturer's warranty
- Two (2) exterior faucets for easy watering
- Weatherproof electrical outlets at front and rear
- Full guttering and downspouts on home
- Concrete driveways and walks
- Engineered post tension foundation via soil testing
- Landscaped and fully sodded front yards
- Fully fenced rear yard

INTERIOR DETAILING

- All plans offer customizing options
- Telephone prewires in kitchen, master bedroom, and gameroom or study
- Cable TV prewires in family room, master bedroom, and gamerooms
- Ceiling lights
- Family room, master bedroom, and gamerooms blocked and wired for ceiling fans
- Smoke detectors in every bedroom
- 2" faux wood blinds in all front windows

BATH FEATURES

- Low maintenance fiberglass tub and shower combination
- Cultured marble vanity tops featuring Moen faucets
- Oak Cabinetry w/framed flat panel doors
- Polished chrome bathroom hardware
- Bathroom mirrors with make-up lighting
- Exhaust fans in all windowless bathrooms & utility rooms