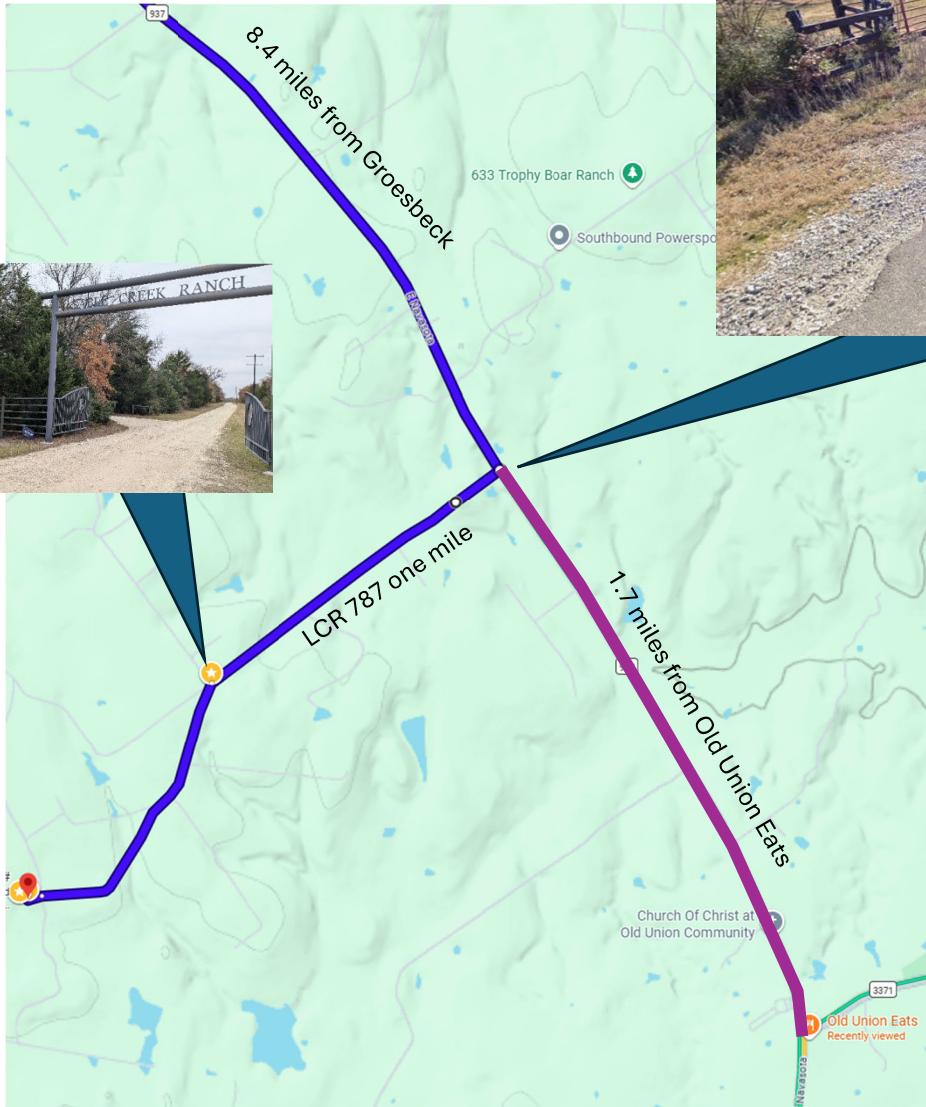


DIRECTIONS

Groesbeck



Roads are mislabeled (and reported) in your favorite maps apps.

From Groesbeck: go south on E Navasota (Hwy 937) 8.4 miles, R on LCR 787 (maps are mislabeled as LCR 791A) at "Little John" ranch 1 mile.

From Old Union Eats Café: go north 1.7 miles on 937, L on LCR 787 at "Little John" ranch 1 mile.

Enter Sable Creek Ranch (gate code provided on appointment). Immediately veer left. Private gravel road ends at the production pad at the property.