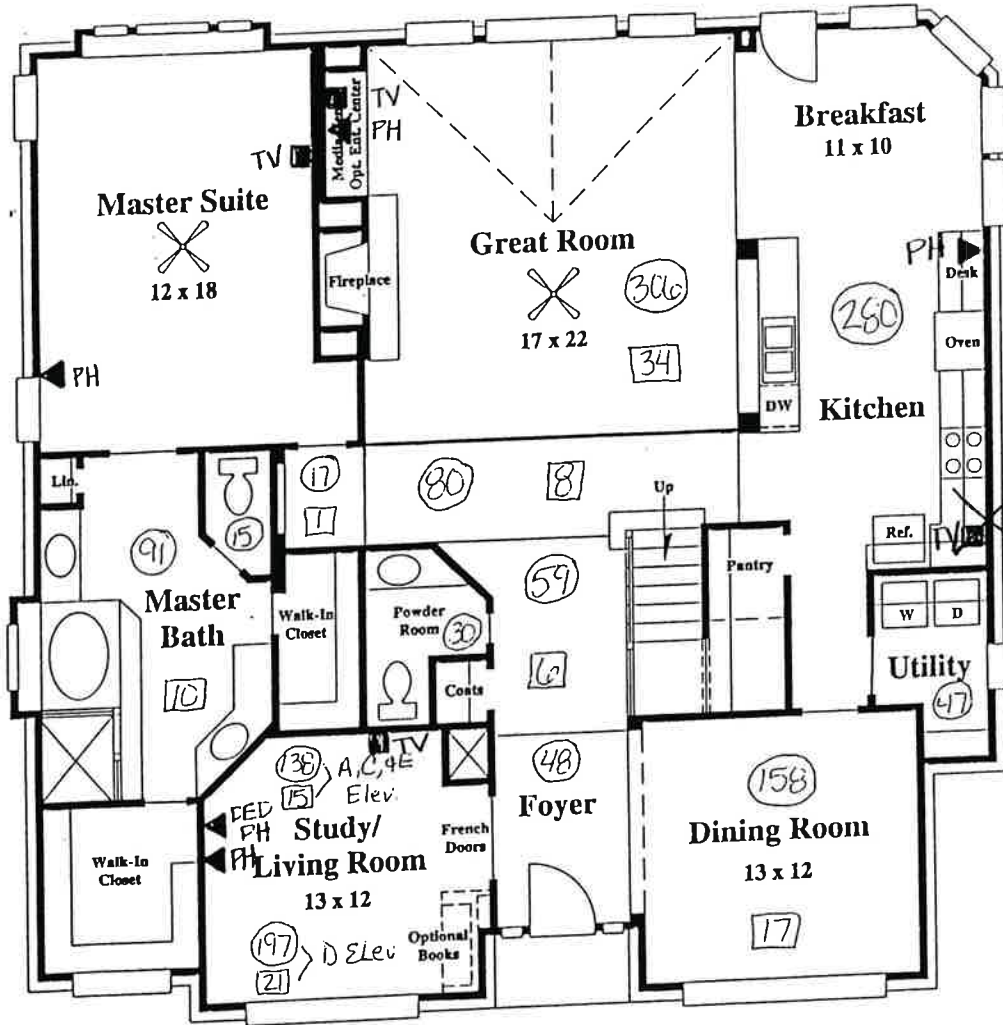


LOUISVILLE

PLAN 462 - 3068 SQ. FT.

*30°
RF.*



Delete

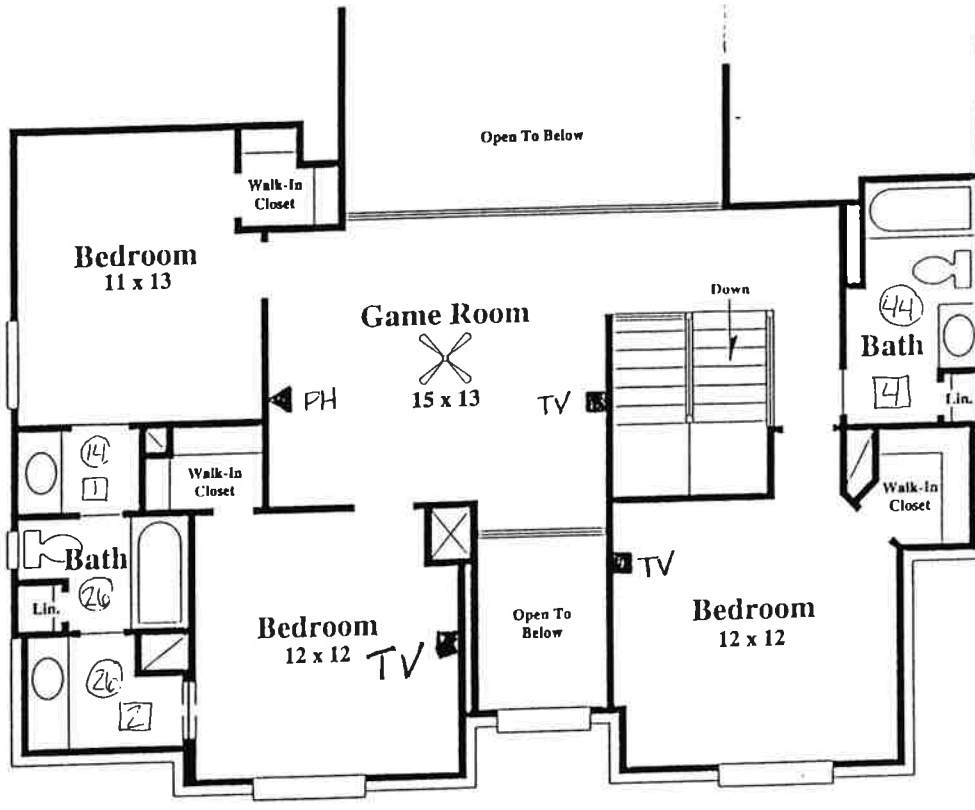
First Floor

- Denotes Square Footage
- Denotes Square Yards

Ash Golden Nutmeg Cabinets

VB

3.10
P.R.



Second Floor

- Sensational two-story Great Room with unique sloped ceiling, architectural windows and media center.
- Gourmet kitchen with large island, walk-in pantry and desk with bookshelves, is open to the great room.
- Study with French doors is a standard feature of this home with ability to add optional bookshelves.
- Spacious master suite with window seat, his and hers walk-in closets and make-up desk.
- Optional fifth bedroom upstairs for growing families.



Optional Bedroom 5



VILLAGE BUILDERS

© 1997 Village Builders Incorporated. All Rights Reserved.

All Plans and Elevations are subject to change per community. Window placement, roof line and porches may vary by elevation. Square footage and room dimensions are approximate. Variances in square footage may occur in different elevations or when different exterior materials are used. Plans, specifications and special features are subject to change without notice.

9/97

