

10606 NOVY GROVE DR

Missouri City, TX 77459

TURNKEY LUXURY.
MOVE IN READY. FULLY EQUIPPED.



Turnkey Perry Home (2024) with a full set of included furnishings and essentials
End-of-cul-de-sac lot • Green space views across the street • No rear neighbors • Oversized backyard privacy

HOME SPECS

- Perry Homes, built 2024 (barely lived-in)
- 4 bedrooms • 3.5 baths
- Home office + upstairs game room
- Primary suite downstairs
- Downstairs guest suite (full bedroom + full bath)
- Oversized 8,712 sq ft cul-de-sac lot
- Extended covered patio
- No rear neighbors and rare backyard privacy

NOTABLE HIGHLIGHTS & UPGRADES

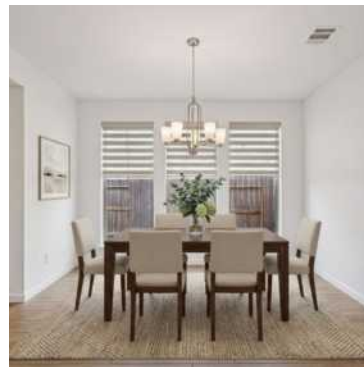
- Premium window treatments throughout (zebra shades + floor-to-ceiling curtains)
- Professional epoxy garage floors
- Wi-Fi enabled smart switches
- Exterior security camera system (front + back)
- Full gutters (front + back)
- Front and backyard sprinkler system
- Added shower shampoo niches
- Comfort-height toilets in all bathrooms
- Added recessed lights and fans in bedrooms
- Energy features: high-efficiency HVAC (13+ SEER), Low-E windows, radiant attic barrier, blown fiberglass insulation
- Minutes to Sienna amenities, parks, and trails

INCLUDED WITH THE HOME

Seller intends for the following items to convey with the home.

- Two 85" TVs (mounted) in living room and game room
- Two modern L-shaped sectionals (living room + game room)
- Four beds with mattresses (all bedrooms furnished)
- LG refrigerator
- GE washer and dryer set
- Patio furniture (extended covered patio)
- Premium window treatments throughout the entire home (all windows)
- Wi-Fi enabled smart switches
- Exterior security camera system

Resort-style amenities including pools, splash pads, fitness centers, trails, parks, and year-round community events. Zoned to Fort Bend ISD.



DAVID EDGERTON

281-800-8014 | edge.homesales@gmail.com