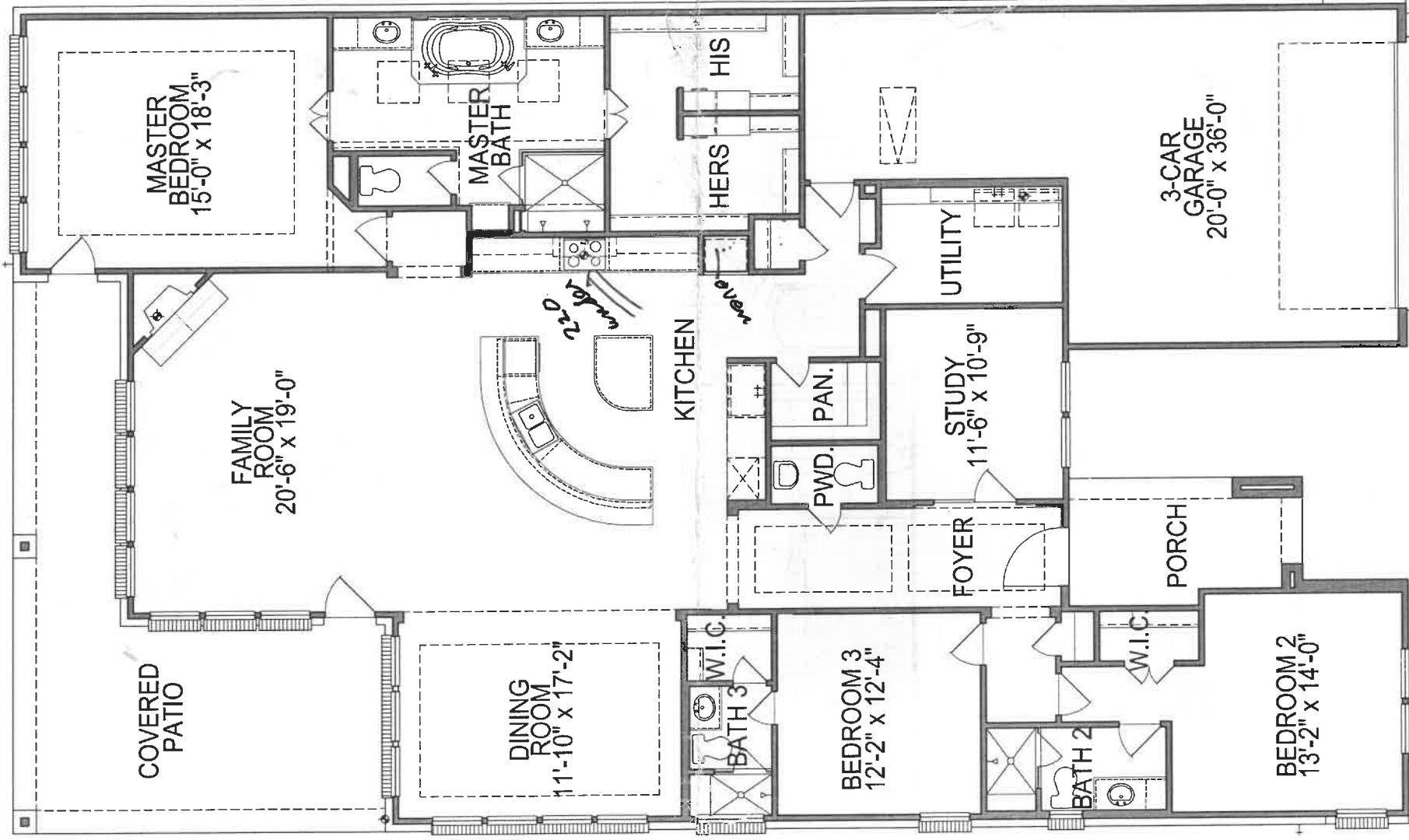




**TRENDMAKER  
HOMES**

**Floorplan PB62** 2,896 Sq. Ft.

3 Bedrooms | 3.5 Baths | 3 Car Garage



**FIRST FLOOR PLAN**

Floorplans, square footage, specifications, prices, and available options may vary by elevation and/or community and are subject to change without prior notice. Images are an artist's conception and not a guarantee of final specifications. Please see your Trendmaker New Home Advisor for details and additional information.

**TrendmakerHomes.com**

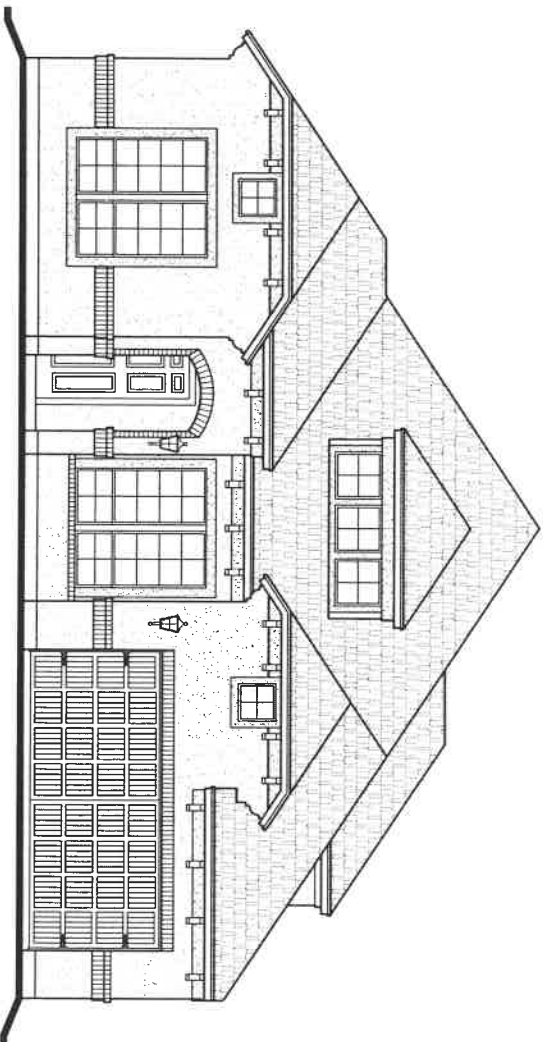


LAST REVISED 04/20/18

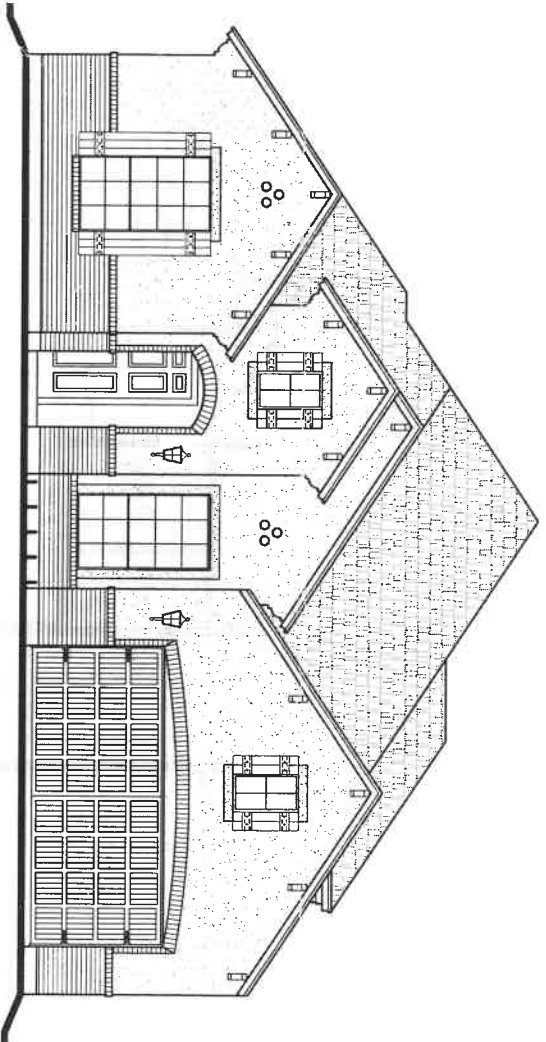


**TRENDMAKER  
HOMES**

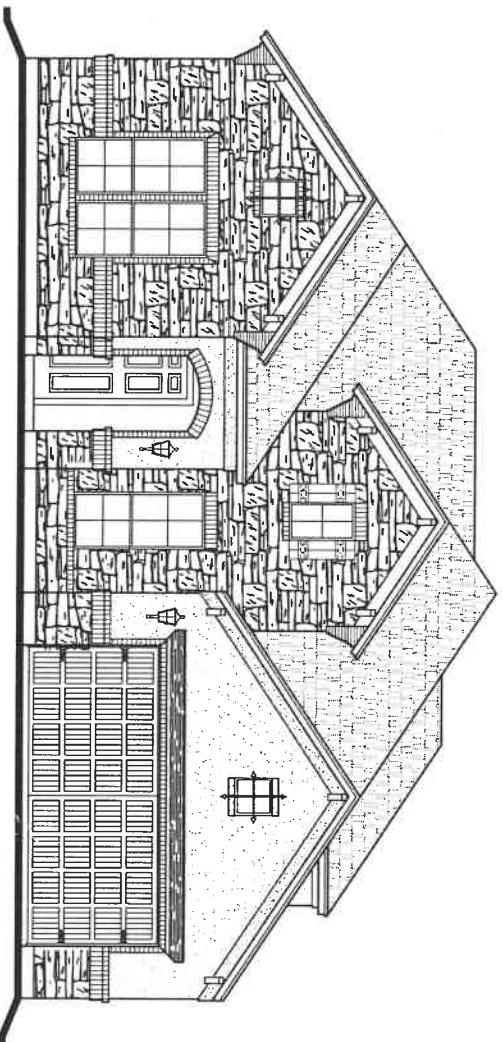
**Elevations PB62 2,896 Sq. Ft.**  
3 Bedrooms | 3.5 Baths | 3 Car Garage



**Elevation - W**



**Elevation - X**



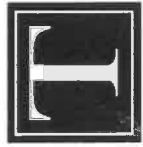
**Elevation - Y**

Floorplans, square footage, specifications, prices, and available options may vary by elevation and/or community and are subject to change without prior notice. Images are an artist's conception and not a guarantee of final specifications. Please see your Trendmaker New Home Advisor for details and additional information.

TrendmakerHomes.com

LAST REVISED 02/26/17

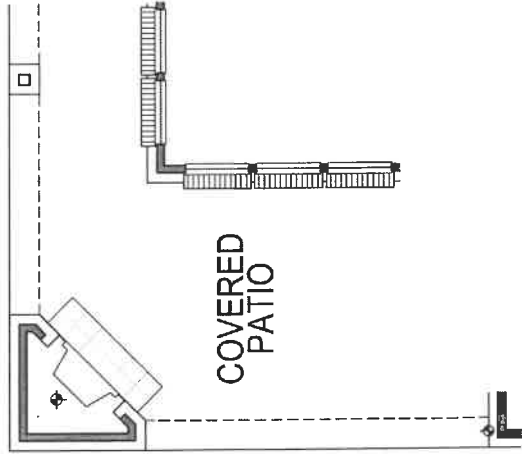




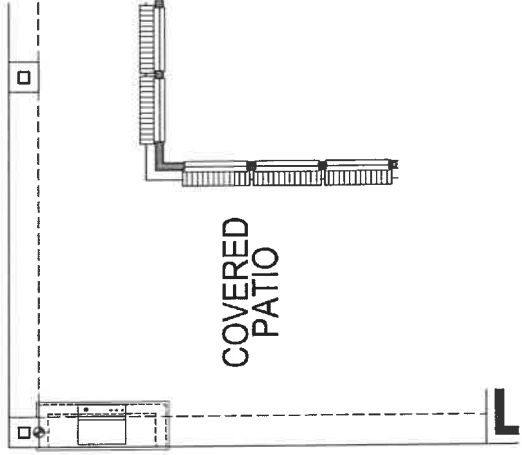
**TRENDMAKER  
HOMES**

**Floorplan PB62** 2,896 Sq. Ft.  
3 Bedrooms | 3.5 Baths | 3 Car Garage

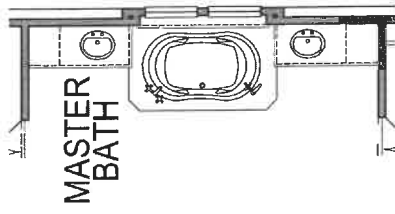
Plan Options



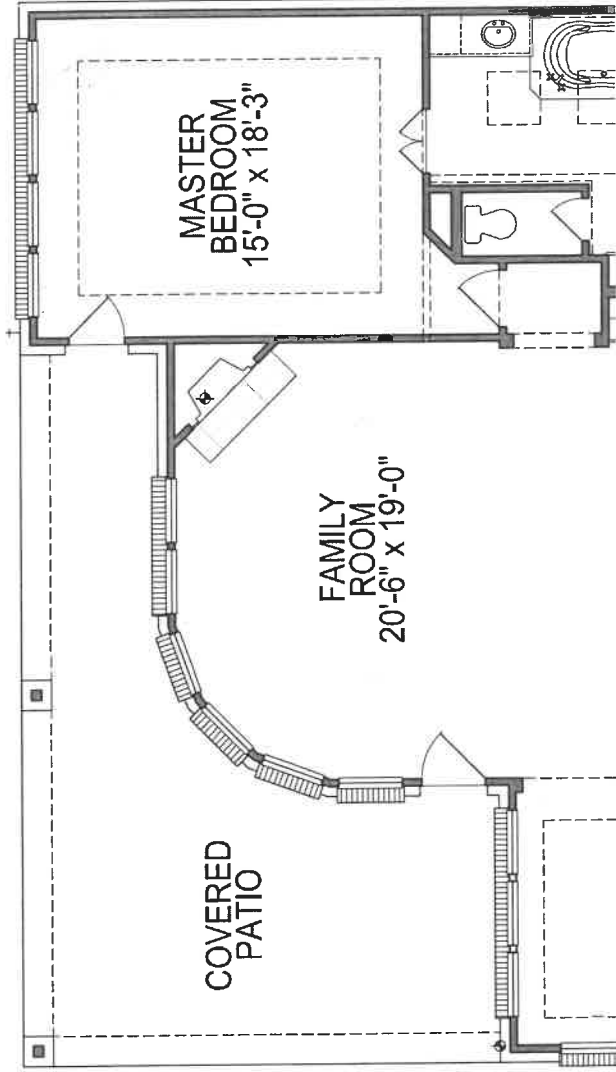
**FIRST FLOOR PLAN  
OPT. #0273  
OUTDOOR FIREPLACE**



**FIRST FLOOR PLAN  
OPT. #0191  
OUTDOOR KITCHEN**



**FIRST FLOOR PLAN  
OPT. #0377  
MSTR BATH  
WINDOWS**  
NON ZERO LOTS ONLY



**FIRST FLOOR PLAN  
OPT. #0672  
CURVED WINDOWS @ FAMILY**

Floorplans, square footage, specifications, prices, and available options may vary by elevation and/or community and are subject to change without prior notice. Images are an artist's conception and not a guarantee of final specifications. Please see your Trendmaker New Home Advisor for details and additional information.

