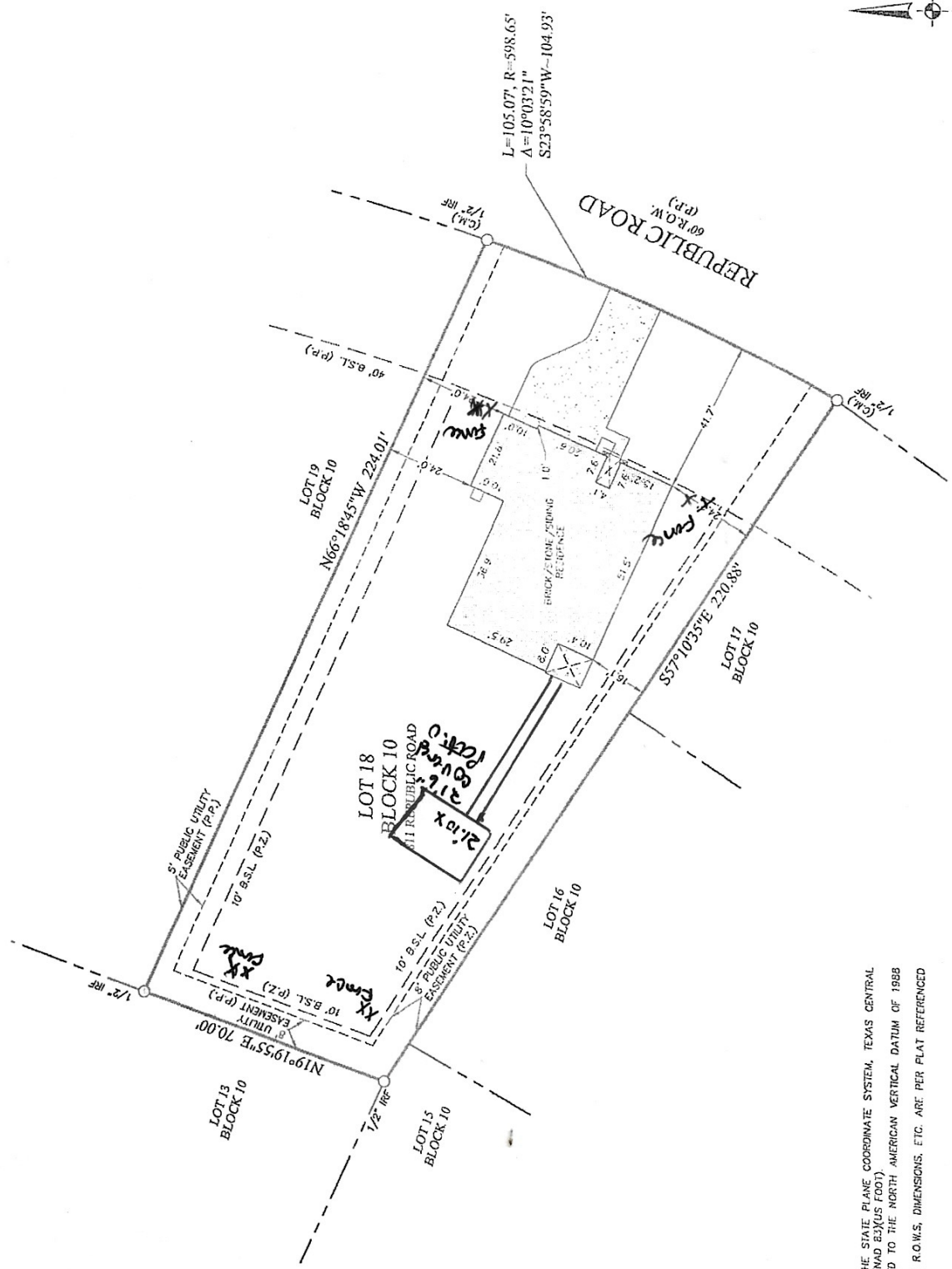


LAND TITLE SURVEY

LEGEND

- a/c unit
- cable tv
- ⊗ electric meter
- ⊕ fire dept. connection
- ⊕ fire hydrant
- ⊕ gas valve
- ⊕ ballard
- ⊕ gas meter
- ⊕ light pole
- ⊕ sign
- ⊕ sanitary sewer manhole
- ⊕ storm water manhole
- ⊕ telephone manhole
- ⊕ tank fill lid
- ⊕ telephone pedestal
- ⊕ traffic signal pole
- ⊕ transformer
- ⊕ utility clean out
- ⊕ utility cabinet
- ⊕ utility vault
- ⊕ utility pole
- ⊕ utility sign
- ⊕ water shutoff
- ⊕ water valve
- ⊕ water manhole
- ⊕ water meter
- ⊕ iron rod found
- ⊕ 1/2" iron rod with cap
- ⊕ stamped "STRAND" set
- ⊕ controlling monument
- ⊕ building setback line
- ⊕ post zoning requirements
- ⊕ gas, electric, telephone, & cable tv easement
- ⊕ boundary line
- ⊕ adjoiner line
- ⊕ easement line
- ⊕ fence
- ⊕ concrete
- ⊕ drainage arrow



NOTES:

1. K. BETTERTON, REGISTERED PROFESSIONAL LAND SURVEYOR OF THE STATE OF TEXAS, DO HEREBY CERTIFY THAT THIS SURVEY IS A TRUE, CORRECT AND ACCURATE REPRESENTATION OF THE PROPERTY AS DESCRIBED HEREIN, AND THAT THE SURVEY HAS BEEN MADE IN ACCORDANCE WITH THE RULES AND REGULATIONS OF THE BOARD OF SURVEYORS AND LAND SURVEYORS AND WAS PREPARED IN ACCORDANCE WITH THE TEXAS BOARD OF SURVEYORS AND LAND SURVEYORS, THEREFORE, EASEMENTS, AGREEMENTS, OR OTHER DOCUMENTS RECORDED, OR UNRECORDED, MAY EXIST THAT AFFECT THE SUBJECT PROPERTY THAT ARE NOT SHOWN HEREON. THIS SURVEY BY ANY OTHER PARTY SHALL BE AT THEIR OWN RISK AND UNDESIGNED IS NOT RESPONSIBLE TO OTHERS FOR ANY LOSS RESULTING THEREFROM.

INDICATES BUILDING LINES, EASEMENTS, R.O.W.S, DIMENSIONS, ETC. ARE PER PLAT REFERENCED DESCRIPTION.

UNITS SHOWN HEREON ARE REFERENCED TO THE NORTH AMERICAN VERTICAL DATUM OF 1988 (US FOOT).

NGS AND DISTANCES ARE BASED ON THE STATE PLANE COORDINATE SYSTEM, TEXAS CENTRAL DATUM OF 1983 (NAD 83)(US FOOT).

