

## ANN ARBOR

plan 4582 - approx. 1,702 sqft



elevation A - brick - standard



elevation A - stone - optional



elevation D - brick - standard



elevation D - stone - optional



elevation E - brick - standard



elevation E - stone - optional

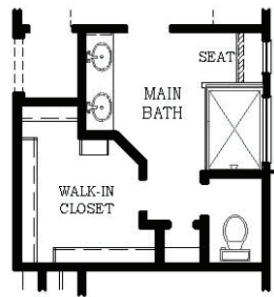
## ANN ARBOR

plan 4582 - approx. 1,702 sqft

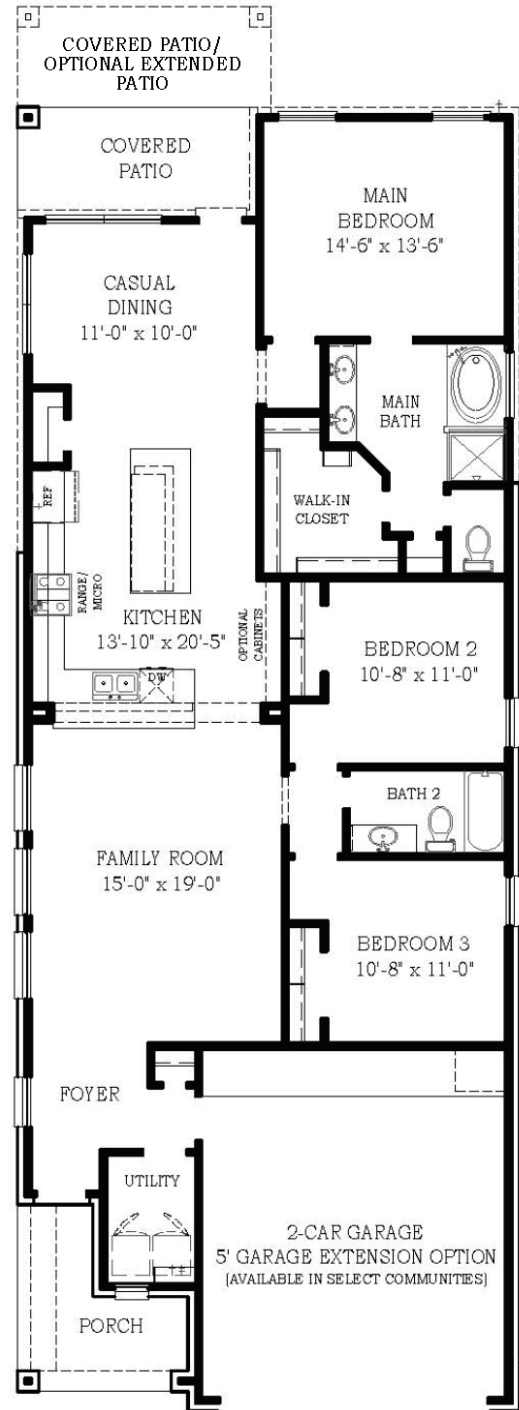
### THIS HOME FEATURES | OPTIONS

- 3 Bedrooms
- 2 Baths
- Covered Patio
- 2-Car Attached Garage

- Large Shower instead of Tub
- Extended Patio



**OPTIONAL MAIN BATH WITHOUT TUB**



### FLOOR PLAN