

Greg A. Brooks, P.E.
PO Box 2373
Freeport, TX 77542

June 5, 2024
(979)229-0068

HOUSE LEVELING FINAL INSPECTION REPORT: JOB NO. 24-LJ115

LOCATION: 501 Elm St
Lake Jackson, TX

CONTRACTOR: Max-Press Foundation Repair
Richwood, TX

DATE OF PILE INSTALLATION & LEVELING: May 25, 2024

INSPECTIONS PERFORMED

April 25, 2024 - Initial Inspection
May 14, 2024 - Final Inspection

CONCRETE SPEC:

All pile sections are pre-cast, 6000 psi at 28-day performance, non-reinforced concrete.

PILES:

54 exterior pressed pile locations were driven to support the main structure in accordance with the details and specifications shown on the attached drawing. Each pile consists of 6" x 12" concrete sections, with the number of 6" x 12" sections varying with driving resistance. Pile sections were installed by hydraulic ram using the weight of the house to provide the driving load. Installation of each pile was to the depth at which the driving started to lift the foundation. All piles were completely driven prior to leveling the house. Concrete capstones were placed on top of the piling sections, from which the house was jacked to a level position. After leveling, two 6"x 12" concrete cylinders were placed on the capstones and shimmed against the grade beam with steel shims.

COMMENTS:

The job meets all standard engineering practices, and the undersigned engineer's specifications. This repair work should stabilize this part of the foundation to its intended function for the life of the structure. It is recommended that the owner have a plan to water around the base of the foundation during dry weather conditions. This will help avoid the need for additional foundation repairs.

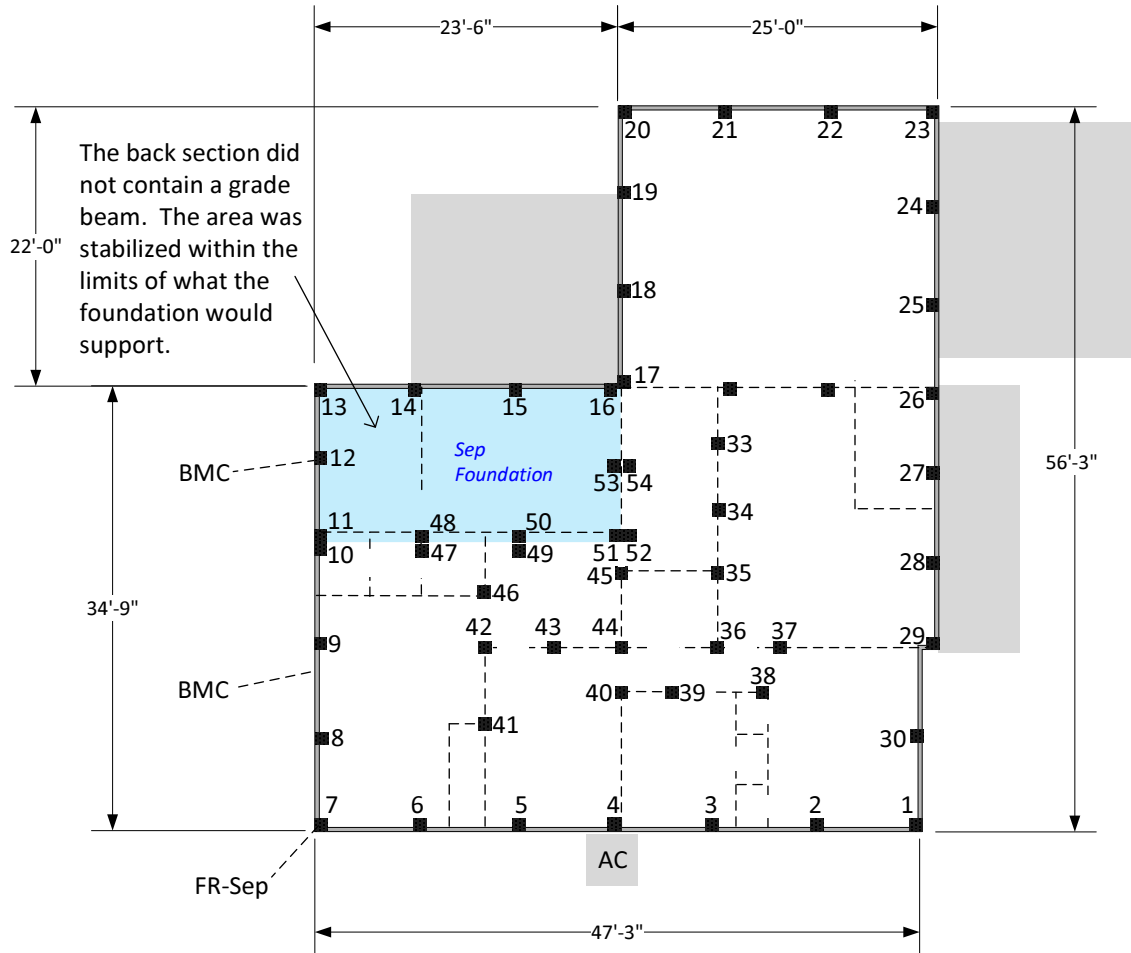
Respectfully submitted,



Greg A. Brooks, P.E. #114197
F-15269

6/5/2024





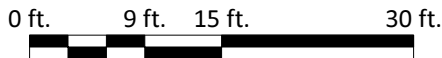
■ Completed Pressed Piles

Completed Pile Placement

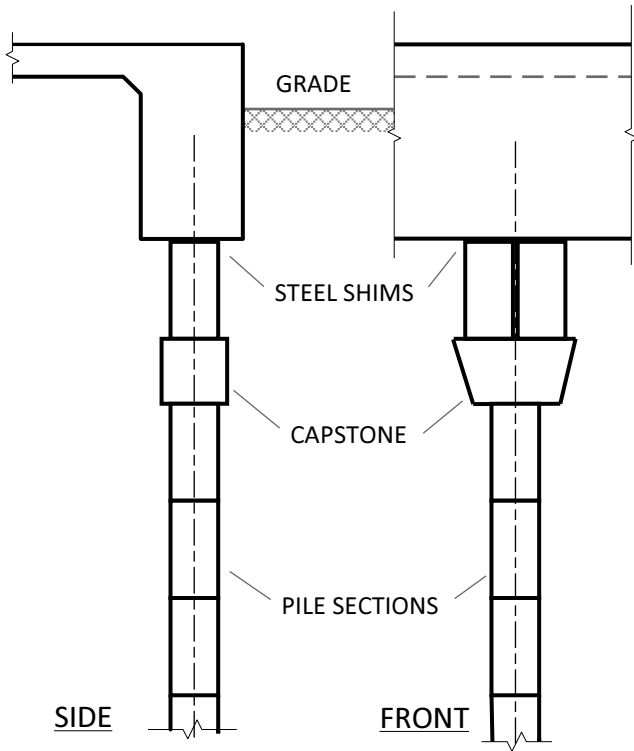
Piles 1-7 placed on 7'-9" centers
 Piles 7-10 placed on 7'-0" centers
 Piles 10-11 placed at slab joint
 Pile 12 placed at center of back slab
 Piles 13-16 placed on 7'-6" centers
 Piles 17-20 placed on 7'-0" centers
 Piles 20-23 placed on 8'-0" centers
 Piles 23-30 placed on 6'-11" centers
 Piles 31-46 are interior piers placed at approximate location as shown on the drawing. Adjust as necessary as interior grade beams are found.
 Piles 47-54 are double piles to support the interior joint of where the two separate foundations meet.

[Handwritten Signature]

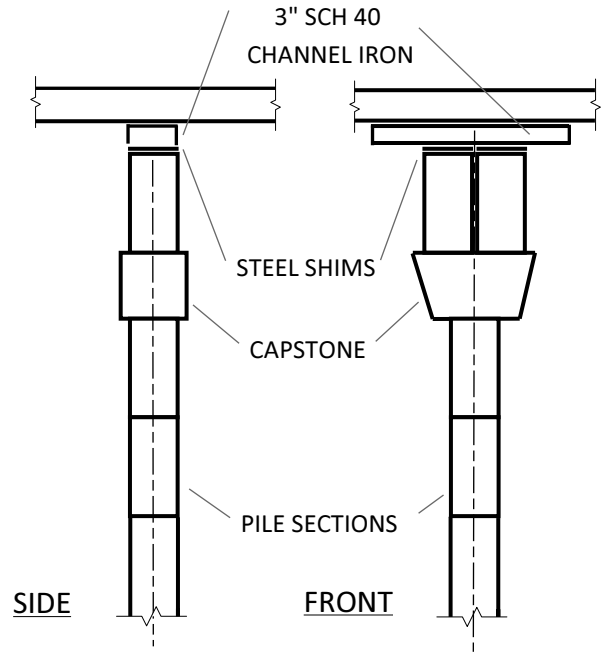
6/5/2024



Firm Reg. # F-15269 This document is the property of G A Brooks Engineering LLC, and the information contained within is confidential and privileged. It may not be copied or distributed without written consent from G A Brooks Engineering LLC.					
<u>Completed Foundation Repair</u> 501 Elm Street Lake Jackson, TX					
PO Box 2373 Freeport, TX 77542		SIZE L	JOB NO	DWG NO 24-LJ115-01	REV 0
gregbrookspe@yahoo.com (979)229-0068		SCALE 1in = 15ft. 0in.	SHEET		1 of 2



SLABS WITH GRADE BEAM



SLABS WITH NO GRADE BEAM

NOTES:

1. Piles shall be placed at a maximum of 8'-0" in single story areas, 6' 0" in two story areas.
2. Pile sections shall consist of 6" diameter x 12" long cylinders. Square or rectangular blocks will not be permitted for use as pile sections.
3. Pile sections shall be installed by jack or hydraulic ram using the weight of the structure to provide the driving load.
4. Piles shall be driven until the foundation starts to lift or the driving load exceeds 6,500 psig
5. Elevate foundation on hydraulic jacks, hold in place with steel shims placed on top of 6" diameter cylinders placed on top of a rectangular solid 6"x6"x12" concrete capstone
5. Contractor to verify underground obstructions, and obtain required permits before beginning job.
6. After leveling, fill voids created, backfill holes and replant where applicable



6/5/2024

Firm Reg. # F-15269 This document is the property of G A Brooks Engineering LLC, and the information contained within is confidential and privileged. It may not be copied or distributed without written consent from G A Brooks Engineering LLC.			
PO Box 2373 Freeport, TX 77542		Pier Detail 501 Elm Street Lake Jackson, TX	
SIZE	JOB NO	DWG NO	REV
L		24-LJ115-02	0
SCALE	1in = 15ft. 0in.	SHEET	2 of 2