

65.84 Acres of Unrestricted Land

In the Path of Growth



OFFERING MEMORANDUM | \$987,600 | HUFFMAN, TX

KW COMMERCIAL | HOUSTON-NORTHEAST PRESENTED BY:

20665 W. Lake Houston Pkwy
Kingwood, TX 77346

AMBER GUILLOTTE

Commercial Broker Associate
office: (281) 217-2916
amber.guillotte@kwcommercial.com
619800, Texas



The calculations and data presented are deemed to be accurate, but not guaranteed. They are intended for the purpose of illustrative projections and analysis. The information provided is not intended to replace or serve as substitute for any legal, accounting, investment, real estate, tax or other professional advice, consultation or service. The user of this software should consult with a professional in the respective legal, accounting, tax or other professional area before making any decisions.

Table of Contents



Executive Summary	3
Property Photos	4
Location Maps	7

Disclaimer

All materials and information received or derived from KW Commercial its directors, officers, agents, advisors, affiliates and/or any third party sources are provided without representation or warranty as to completeness, veracity, or accuracy, condition of the property, compliance or lack of compliance with applicable governmental requirements, developability or suitability, financial performance of the property, projected financial performance of the property for any party's intended use or any and all other matters.

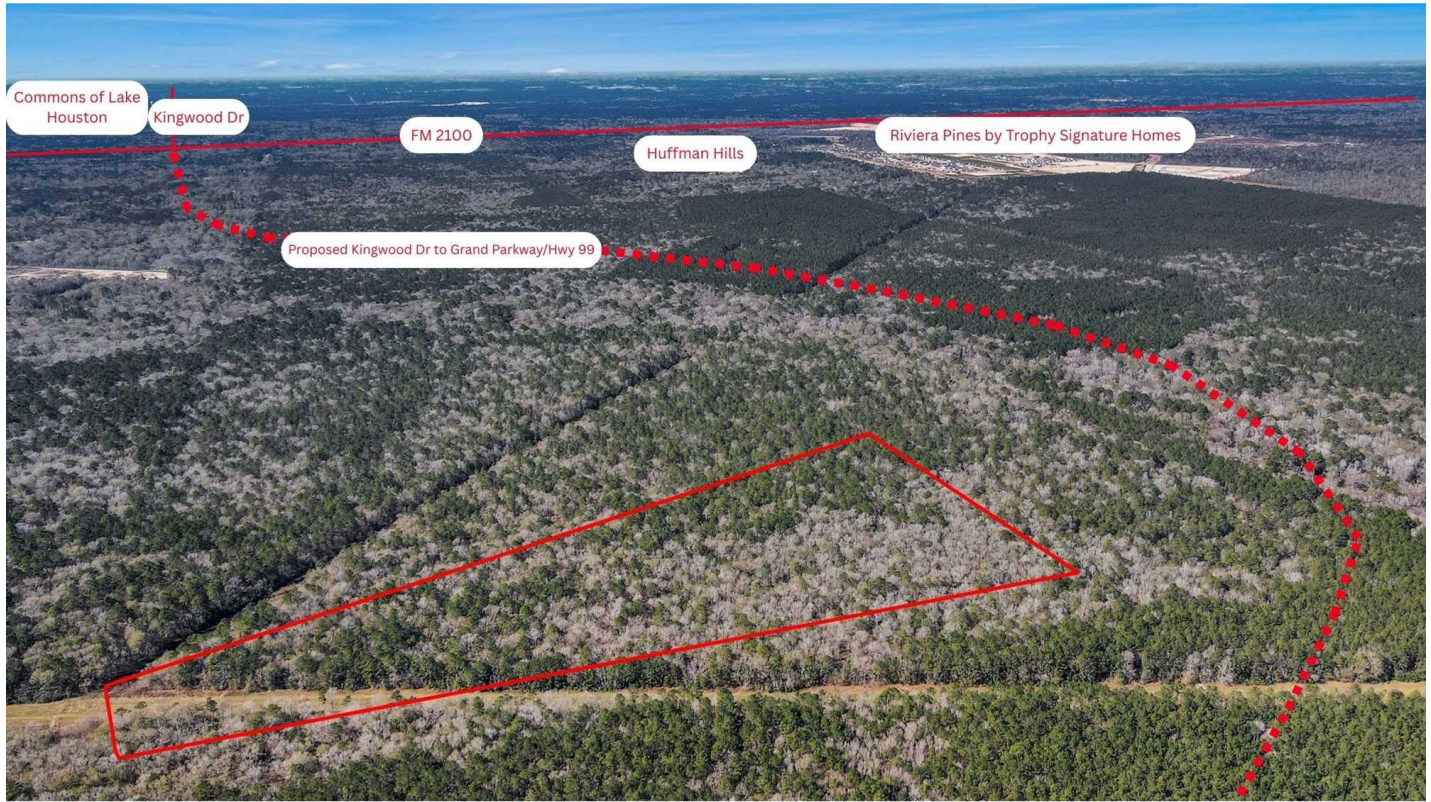
Neither KW Commercial its directors, officers, agents, advisors, or affiliates makes any representation or warranty, express or implied, as to accuracy or completeness of the materials or information provided, derived, or received. Materials and information from any source, whether written or verbal, that may be furnished for review are not a substitute for a party's active conduct of its own due diligence to determine these and other matters of significance to such party. KW Commercial will not investigate or verify any such matters or conduct due diligence for a party unless otherwise agreed in writing.

EACH PARTY SHALL CONDUCT ITS OWN INDEPENDENT INVESTIGATION AND DUE DILIGENCE.

Any party contemplating or under contract or in escrow for a transaction is urged to verify all information and to conduct their own inspections and investigations including through appropriate third-party independent professionals selected by such party. All financial data should be verified by the party including by obtaining and reading applicable documents and reports and consulting appropriate independent professionals. KW Commercial makes no warranties and/or representations regarding the veracity, completeness, or relevance of any financial data or assumptions. KW Commercial does not serve as a financial advisor to any party regarding any proposed transaction.

All data and assumptions regarding financial performance, including those used for financial modeling purposes, may differ from actual data or performance. Any estimates of market rents and/or projected rents that may be provided do not necessarily mean that rents can be established at or increased to that level. Parties must evaluate any applicable contractual and governmental limitations as well as market conditions, vacancy factors and other issues in order to determine rents from or for the property. Legal questions should be discussed by the party with an attorney. Tax questions should be discussed by the party with a certified public accountant or tax attorney. Title questions should be discussed by the party with a title officer or attorney. Questions regarding the condition of the property and whether the property complies with applicable governmental requirements should be discussed by the party with appropriate engineers, architects, contractors, other consultants, and governmental agencies. All properties and services are marketed by KW Commercial in compliance with all applicable fair housing and equal opportunity laws.

Executive Summary

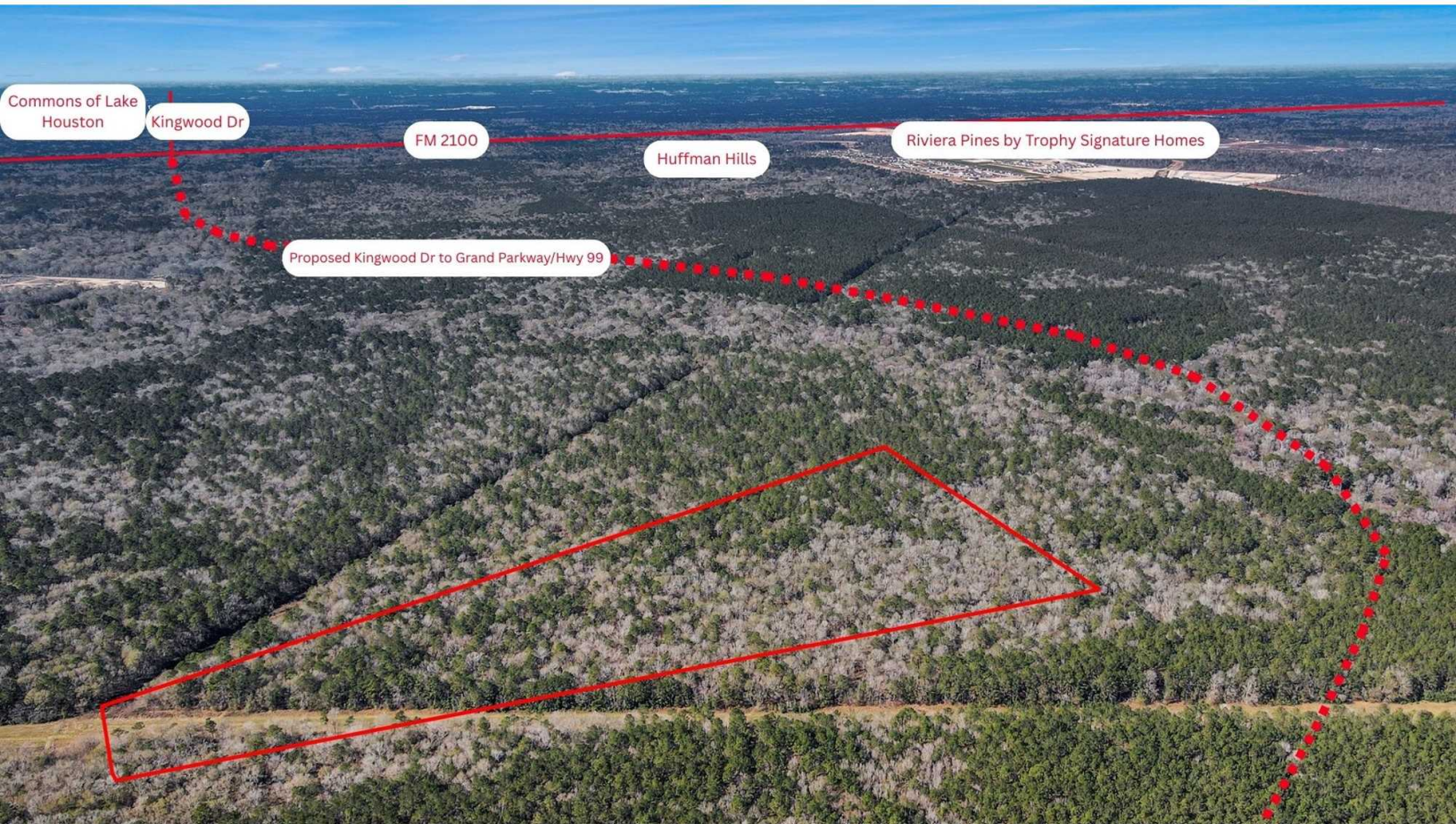


Property Description

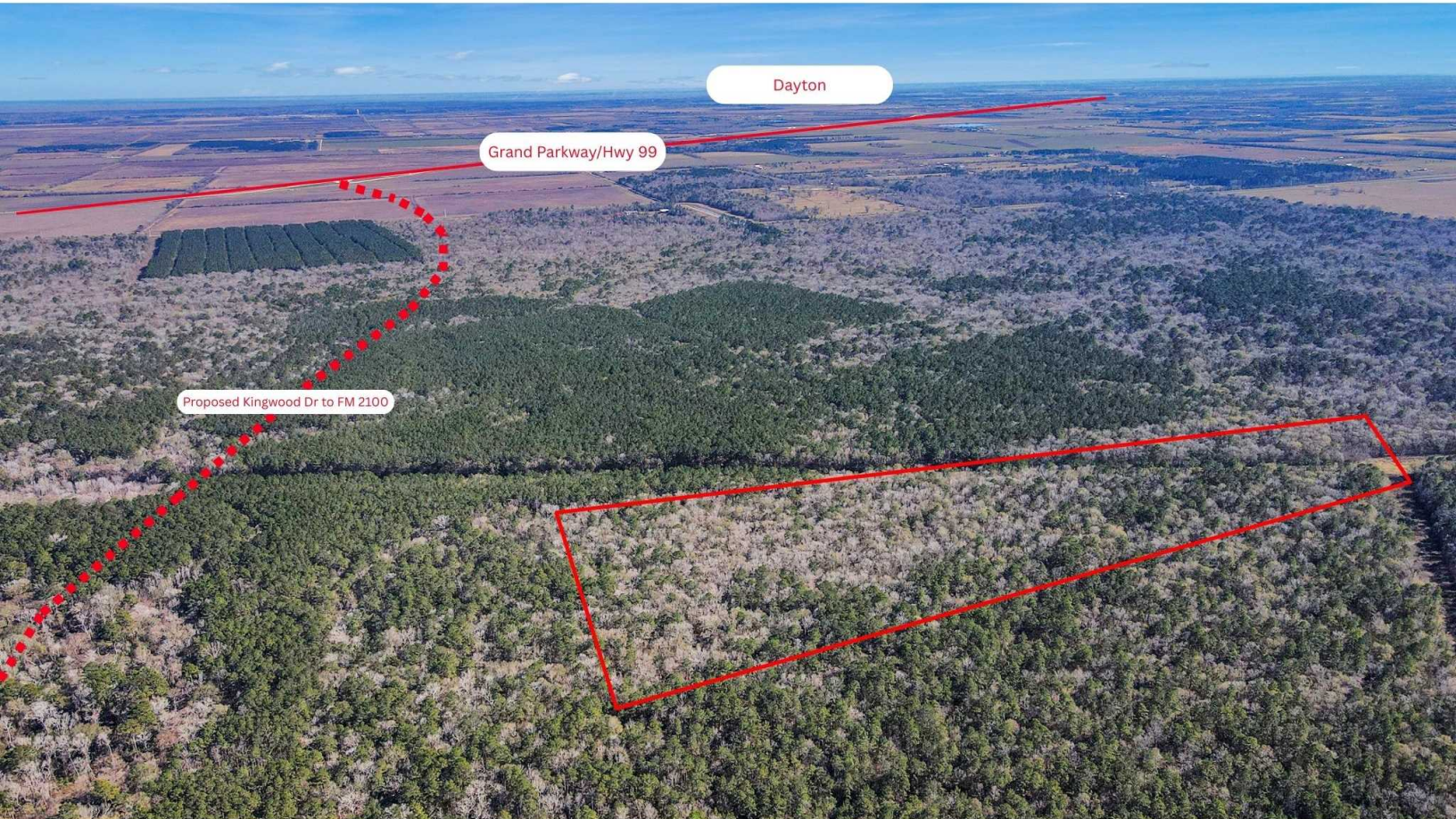
Rare opportunity to acquire 65.84 acres of unrestricted land in the rapidly growing Huffman area. This expansive tract offers exceptional flexibility for residential, commercial, mixed-use, or investment purposes. The property is conveniently located near FM 1960, FM 2100 and Highway 99 (Grand Parkway), providing strong regional connectivity and easy access to Kingwood, Atascocita, and the greater Houston market. Adding to its long-term upside, the land sits near the proposed path of the Kingwood Parkway, placing it in the direct path of future growth and infrastructure expansion. With significant development activity already underway in the surrounding area, this tract presents a compelling opportunity for developers, investors, or end users seeking scale, visibility, and strategic location. A rare combination of size, location, and growth potential — secure your position in one of Northeast Houston's most promising corridors.



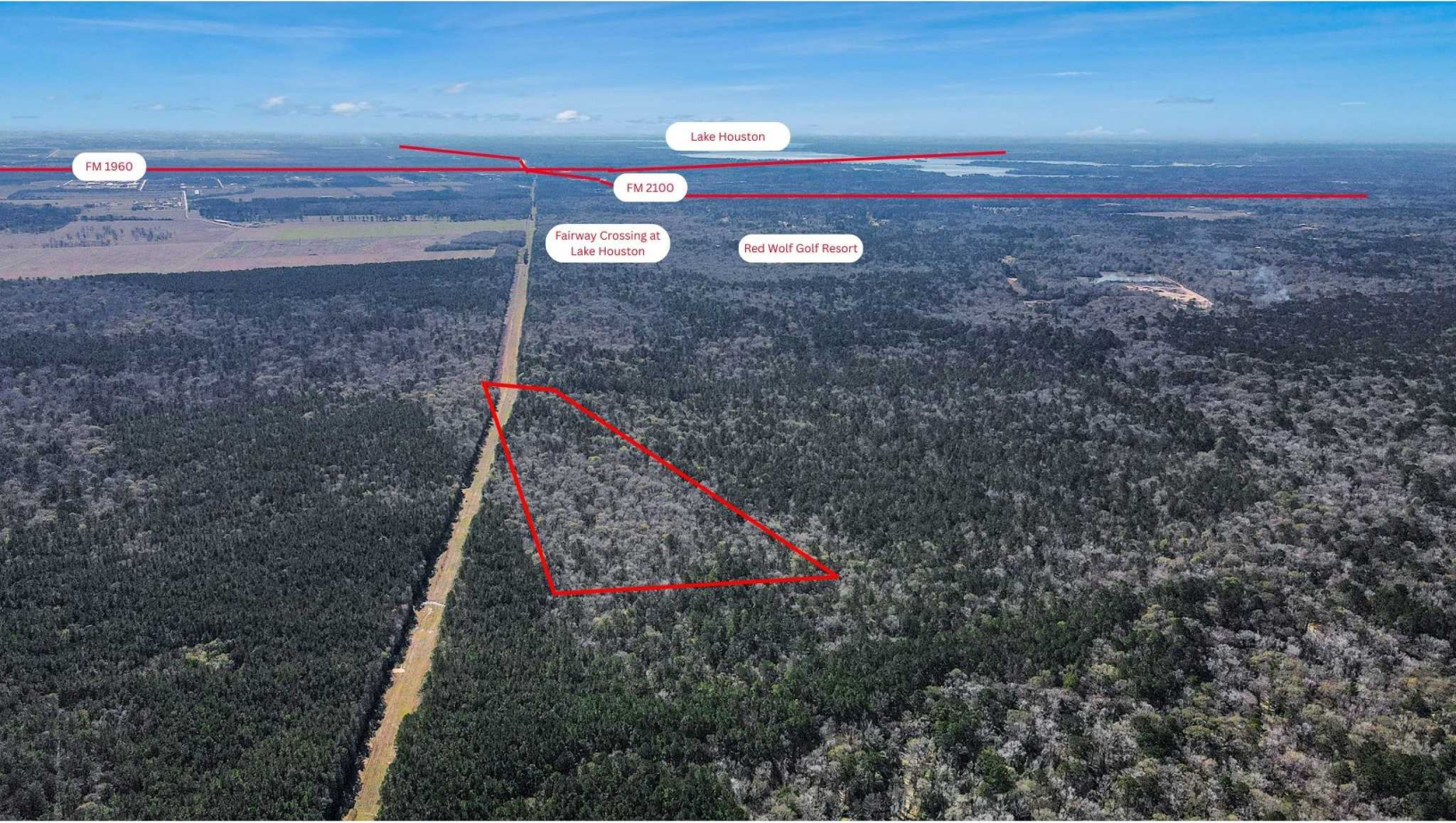
Property Photos



Property Photos



Property Photos



Location Maps

