

2021 Sandy Coast Circle, League City, Texas 77573, United States

Gross Living Area: 5213 sq. ft

FLOOR 1
[AREA: 2397]



Space	Area (sq. ft)	Calculation <small>Coordinate Polygon Area Algorithm using inches</small>
FLOOR 1 (Living area)	2397	$ \begin{aligned} & -((270.9 + 270.9) * (-2.3 - 203) + (270.9 + 347.4) * (203 - 203) + (347.4 + 347.4) * (203 - 228.4) + \\ & (347.4 + 435.4) * (228.4 - 228.4) + (435.4 + 435.4) * (228.4 - 361.5) + (435.4 + 600) * (361.5 - \\ & 361.5) + (600 + 600) * (361.5 - 777.8) + (600 + 371.9) * (777.8 - 777.8) + (371.9 + 371.9) * \\ & (777.8 - 744.8) + (371.9 + 215.7) * (744.8 - 744.8) + (215.7 + 215.7) * (744.8 - 777.8) + (215.7 + \\ & 29.3) * (777.8 - 777.8) + (29.3 + 29.3) * (777.8 - 322.3) + (29.3 + 12.3) * (322.3 - 304.6) + (12.3 + \\ & 12.3) * (304.6 - 256.1) + (12.3 + 29.3) * (256.1 - 238.4) + (29.3 + 29.3) * (238.4 - -2.3) + (29.3 + \\ & 270.9) * (-2.3 - -2.3)) * 0.5 * 0.00694 \end{aligned} $

2021 Sandy Coast Circle, League City, Texas 77573, United States

Gross Living Area: 5213 sq. ft.
[AREA: 2278]



Space	Area (sq. ft)	Calculation
FLOOR 2 (Living area)	2278	Coordinate Polygon Area Algorithm using inches $-((253.8 + 253.8) * (-2.2 - 228.5) + (253.8 + 418.4) * (228.5 - 228.5) + (418.4 + 418.4) * (228.5 - 307.2) + (418.4 + 582.9) * (307.2 - 307.2) + (582.9 + 582.9) * (307.2 - 777.9) + (582.9 + 354.8) * (777.9 - 777.9) + (354.8 + 354.8) * (777.9 - 744.9) + (354.8 + 356.8) * (744.9 - 738.9) + (356.8 + 356.8) * (738.9 - 508.2) + (356.8 + 245.9) * (508.2 - 508.2) + (245.9 + 245.9) * (508.2 - 596.3) + (245.9 + 301.1) * (596.3 - 596.5) + (301.1 + 301.1) * (596.5 - 653) + (301.1 + 245.9) * (653 - 653) + (245.9 + 245.9) * (653 - 744.9) + (245.9 + 198.7) * (744.9 - 744.9) + (198.7 + 198.7) * (744.9 - 777.9) + (198.7 + 12.3) * (777.9 - 777.9) + (12.3 + 12.3) * (777.9 - -2.2) + (12.3 + 253.8) * (-2.2 -$

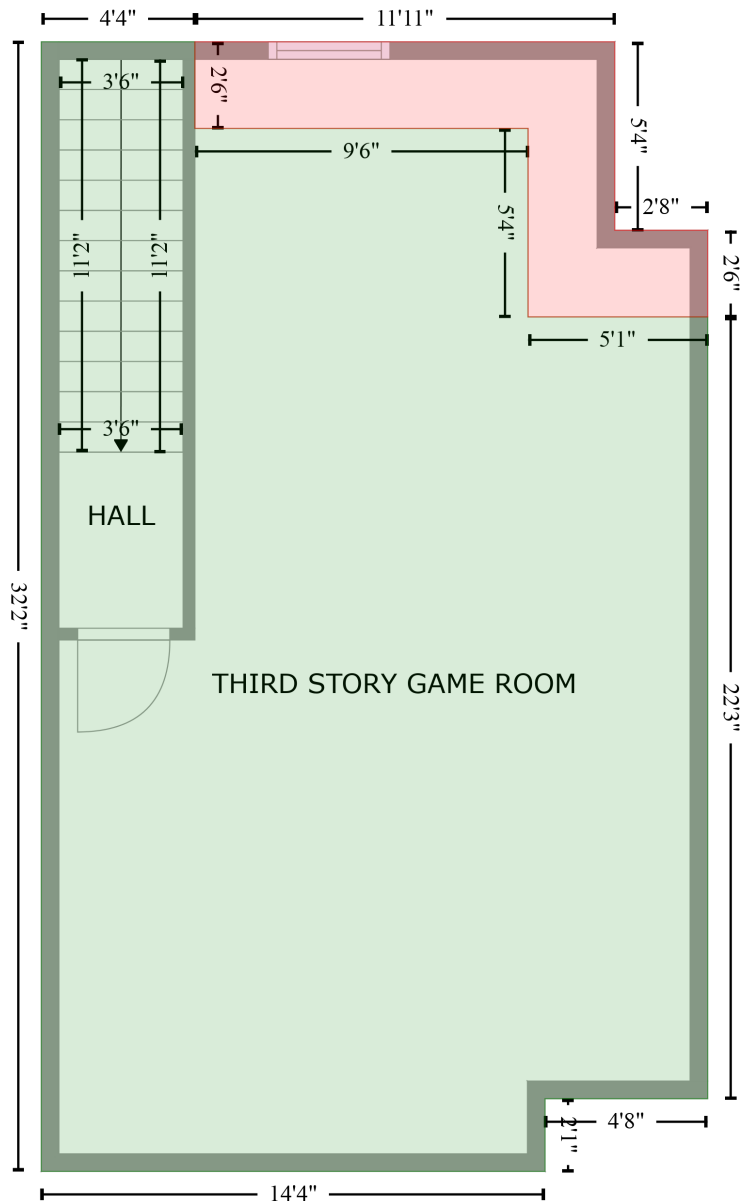
Space	Area (sq. ft)	Calculation
OPEN TO BELOW (Non-living area)	160	Coordinate Polygon Area Algorithm using inches $-2.2)) * 0.5 * 0.00694$ $-((356.8 + 356.8) * (508.2 - 738.9) + (356.8 + 354.8) * (738.9 - 744.9) + (354.8 + 245.9) * (744.9 - 744.9) + (245.9 + 245.9) * (744.9 - 653) + (245.9 + 301.1) * (653 - 653) + (301.1 + 301.1) * (653 - 596.5) + (301.1 + 245.9) * (596.5 - 596.3) + (245.9 + 245.9) * (596.3 - 508.2) + (245.9 + 356.8) * (508.2 - 508.2)) * 0.5 * 0.00694$

2021 Sandy Coast Circle, League City, Texas 77573, United States

Gross Living Area: 5213 sq. ft

FLOOR 3
[AREA: 538]

LOW CEILING (1)
[AREA: 49]



Space	Area (sq. ft)	Calculation <small>Coordinate Polygon Area Algorithm using inches</small>
FLOOR 3 (Living area)	538	$-\left((240 + 240) * (277.2 - 306.8) + (240 + 353.9) * (306.8 - 306.8) + (353.9 + 353.9) * (306.8 - 371.3) + (353.9 + 415.3) * (371.3 - 371.3) + (415.3 + 415.3) * (371.3 - 638.7) + (415.3 + 359.7) * (638.7 - 638.7) + (359.7 + 359.7) * (638.7 - 663.6) + (359.7 + 187.6) * (663.6 - 663.6) + (187.6 + 187.6) * (663.6 - 277.2) + (187.6 + 240) * (277.2 - 277.2)\right) * 0.5 * 0.00694$
LOW CEILING (Non-living area)	49	$-\left((383.5 + 383.5) * (277.2 - 341.6) + (383.5 + 415.3) * (341.6 - 341.6) + (415.3 + 415.3) * (341.6 - 371.3) + (415.3 + 353.9) * (371.3 - 371.3) + (353.9 + 353.9) * (371.3 - 306.8) + (353.9 + 240) * (306.8 - 306.8) + (240 + 240) * (306.8 - 277.2) + (240 + 383.5) * (277.2 - 277.2)\right) * 0.5 * 0.00694$