

First Floor

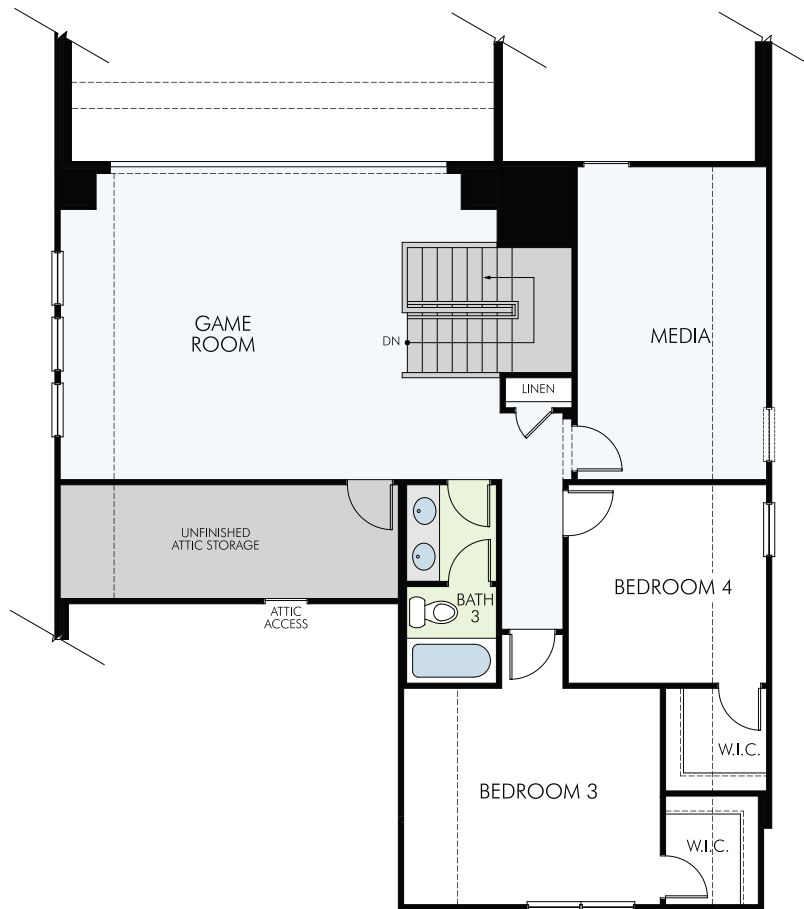


877-Ask-Meritage (275.6374) | meritagehomes.com | 909 Hidden Ridge, Suite 190, Irving, TX



The floorplan rendering may not be drawn to scale. Any dimensions on the floorplan rendering are approximate and actual dimensions may vary. Plans and specifications are subject to change without notice. Homes may be constructed with a floorplan that is the reverse of the floorplan rendering. Plans are copyrighted and or otherwise subject to intellectual property rights of Meritage and or others and cannot be reproduced or copied without Meritage's prior written consent.

Second Floor



877-Ask-Meritage (275.6374) | meritagehomes.com | 909 Hidden Ridge, Suite 190. Irving, TX



The floorplan rendering may not be drawn to scale. Any dimensions on the floorplan rendering are approximate and actual dimensions may vary. Plans and specifications are subject to change without notice. Homes may be constructed with a floorplan that is the reverse of the floorplan rendering. Plans are copyrighted and or otherwise subject to intellectual property rights of Meritage and or others and cannot be reproduced or copied without Meritage's prior written consent.

The Silver Maple 4010

4 Bed | 3 Bath | 2 Garage | 2 Story

3,038 sq. ft.

\$0

\$0

Disclaimer: Pricing and availability to subject to change. Please consult your sales representative to confirm pricing Date 06.06.2017

877-Ask-Meritage (275.6374) | meritagehomes.com | 909 Hidden Ridge, Suite 190. Irving, TX



The floorplan rendering may not be drawn to scale. Any dimensions on the floorplan rendering are approximate and actual dimensions may vary. Plans and specifications are subject to change without notice. Homes may be constructed with a floorplan that is the reverse of the floorplan rendering. Plans are copyrighted and or otherwise subject to intellectual property rights of Meritage and or others and cannot be reproduced or copied without Meritage's prior written consent.