

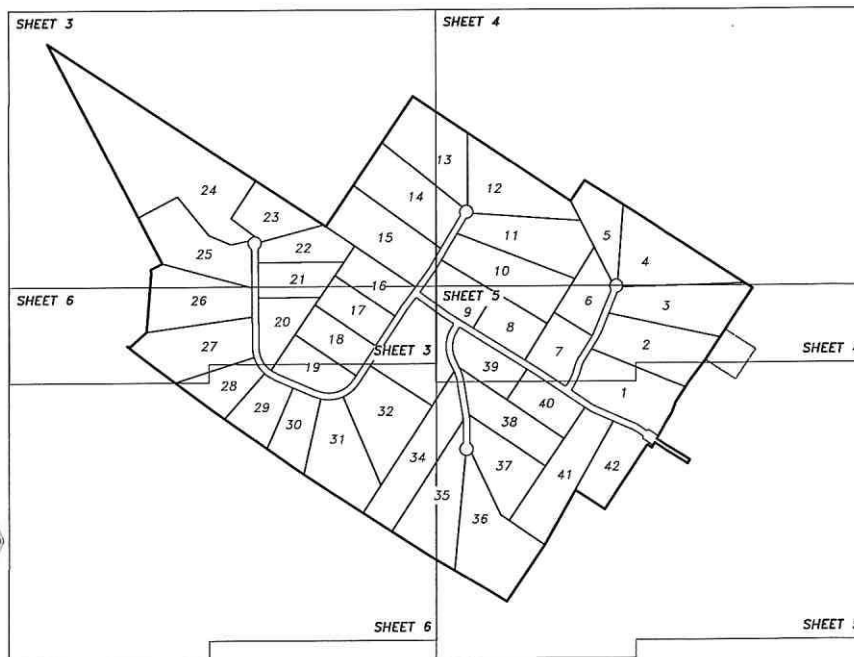
MANAGING MEMBER

NOTARY PUBLIC IN AND FOR THE STATE OF TEXAS

BYRON RYDER, COUNTY JUDGE, LEON COUNTY, TEXAS

DAVID GRIMES, COMMISSIONER PRECINCT IV LEON COUNTY, TEXAS

DANNY J. STARK, R.P.L.S. NO. 5602



1 OF 6
SHEET

HUGH MATHERSON SURVEY, ABSTRACT NO. 577 AND THE GEORGE E. DWIGHT SURVEY, ABSTRACT NO. 222 IN LEON COUNTY AND BEING A PORTION OF A TRACT OF LAND CALLED IN A WARRANTY DEED DATED APRIL 21, 2021, FROM THE ESTATE OF JESSE R. HOLT TO LSLP TIMBERCREST RANCH, LLC, OF RECORD IN DOCUMENT NO. 2021-443112 AND FILED OFFICIAL RECORDS OF LEON COUNTY, TEXAS, SAID 354.64 ACRE TRACT BEING MORE PARTICULARLY DESCRIBED BY METES AND BOUNDS AS FOLLOWS:

THE MONUMENT NEAR THE BASE OF A FENCE POST ALONG THE NORTHEASTERLY LINE OF A CALLED 597.65 ACRE TRACT AS SHOWN ON DOCUMENT TO LEO F. TREFFY IN RECORDS OF LEON COUNTY, BEING A SOUTHERLY CORNER OF A CALLED 113.75 ACRE TRACT AS SHOWN ON DOCUMENT TO CAMERON S. DOBOS IN VOLUME 568, PAGE 828 OF THE D POINT OF BEGINNING HAVING A NORTHING OF 10,449,861.86 US FT, AND AN EASTING OF 5,590,464.18 US FT, OF THE TEXAS COORDINATE SYSTEM, CENTRAL ZONE, NAD 83

BE SOUTHERLY LINE OF SAID 113.75 ACRE TRACT, PASSING THE CALCULATED SOUTHWESTERLY CORNER OF A CALLED 55.903 ACRE TRACT AS SHOWN ON DOCUMENT TO LAIRON W. 38906 OF THE OFFICIAL RECORDS OF LEON COUNTY AT A DISTANCE OF 2102.77', AND CONTINUING ALONG THE SOUTHERLY LINE OF SAID 55.903 ACRE TRACT FOR A TOTAL DISTANCE AT THE BASE OF A 6" PINE CREOSOTED FENCE POST AT THE SOUTHEAST CORNER OF SAID 55.903 ACRE TRACT AND A REENTRANT CORNER HEREOF;

E SOUTHEASTERLY LINE OF SAID 55.903 ACRE TRACT, GENERALLY ALONG A FENCE, A DISTANCE OF 1432.70' TO A POINT FOR CORNER, WHENCE A 1/2" IRON ROD FOUND AT THE 1ST BEARS SOUTH 36°16'42" WEST, A DISTANCE OF 7.72' (ADJOINING 38.251 ACRE DEED CALLS FOR CORNER TO BE NORTH OF SAID FOUND PIN AT FENCE CORNER BY 7.72'), SAID 1TERLY CORNER OF A CALLED 38.251 ACRE TRACT AS SHOWN ON DOCUMENT TO LAIRON W. DOWDEN, JR. IN DOCUMENT NO. 2020-00439004 OF THE OFFICIAL RECORDS OF LEON HER HEREOF;

BE SOUTHERLY LINE OF SAID 113.75 ACRE TRACT, PASSING THE CALCULATED SOUTHWESTERLY CORNER OF A CALLED 55.903 ACRE TRACT AS SHOWN ON DOCUMENT TO LAIRON W. 38906 OF THE OFFICIAL RECORDS OF LEON COUNTY AT A DISTANCE OF 2102.77', AND CONTINUING ALONG THE SOUTHERLY LINE OF SAID 55.903 ACRE TRACT FOR A TOTAL DISTANCE AT THE BASE OF A 6" PINE CREOSOTED FENCE POST AT THE SOUTHEAST CORNER OF SAID 55.903 ACRE TRACT AND A REENTRANT CORNER HEREOF;

E SOUTHEASTERLY LINE OF SAID 55.903 ACRE TRACT, GENERALLY ALONG A FENCE, A DISTANCE OF 1432.70' TO A POINT FOR CORNER, WHENCE A 1/2" IRON ROD FOUND AT THE 1ST BEARS SOUTH 36°16'42" WEST, A DISTANCE OF 7.72' (ADJOINING 38.251 ACRE DEED CALLS FOR CORNER TO BE NORTH OF SAID FOUND PIN AT FENCE CORNER BY 7.72'), SAID 1TERLY CORNER OF A CALLED 38.251 ACRE TRACT AS SHOWN ON DOCUMENT TO LAIRON W. DOWDEN, JR. IN DOCUMENT NO. 2020-00439004 OF THE OFFICIAL RECORDS OF LEON HER HEREOF;

BE SOUTHERLY LINE OF SAID 113.75 ACRE TRACT, PASSING THE CALCULATED SOUTHWESTERLY CORNER OF A CALLED 55.903 ACRE TRACT AS SHOWN ON DOCUMENT TO LAIRON W. 38906 OF THE OFFICIAL RECORDS OF LEON COUNTY AT A DISTANCE OF 2102.77', AND CONTINUING ALONG THE SOUTHERLY LINE OF SAID 55.903 ACRE TRACT FOR A TOTAL DISTANCE AT THE BASE OF A 6" PINE CREOSOTED FENCE POST AT THE SOUTHEAST CORNER OF SAID 55.903 ACRE TRACT AND A REENTRANT CORNER HEREOF;

E SOUTHEASTERLY LINE OF SAID 55.903 ACRE TRACT, GENERALLY ALONG A FENCE, A DISTANCE OF 1432.70' TO A POINT FOR CORNER, WHENCE A 1/2" IRON ROD FOUND AT THE 1ST BEARS SOUTH 36°16'42" WEST, A DISTANCE OF 7.72' (ADJOINING 38.251 ACRE DEED CALLS FOR CORNER TO BE NORTH OF SAID FOUND PIN AT FENCE CORNER BY 7.72'), SAID 1TERLY CORNER OF A CALLED 38.251 ACRE TRACT AS SHOWN ON DOCUMENT TO LAIRON W. DOWDEN, JR. IN DOCUMENT NO. 2020-00439004 OF THE OFFICIAL RECORDS OF LEON HER HEREOF;

BE SOUTHERLY LINE OF SAID 113.75 ACRE TRACT, PASSING THE CALCULATED SOUTHWESTERLY CORNER OF A CALLED 55.903 ACRE TRACT AS SHOWN ON DOCUMENT TO LAIRON W. 38906 OF THE OFFICIAL RECORDS OF LEON COUNTY AT A DISTANCE OF 2102.77', AND CONTINUING ALONG THE SOUTHERLY LINE OF SAID 55.903 ACRE TRACT FOR A TOTAL DISTANCE AT THE BASE OF A 6" PINE CREOSOTED FENCE POST AT THE SOUTHEAST CORNER OF SAID 55.903 ACRE TRACT AND A REENTRANT CORNER HEREOF;

SAID 60' WIDE ROADWAY, GENERALLY NORTH OF A WIRE FENCE, ALONG THE SOUTH LINE OF A CALLED 14.80 ACRE TRACT AS SHOWN ON DOCUMENT TO LAIRON W. DOWDEN, JR. 'TICAL RECORDS OF LEON COUNTY, THEN ALONG THE SOUTHERLY LINE OF A CALLED 72.939 ACRE TRACT OF LAND DESCRIBED IN A DOCUMENT TO ANNEVA BETH ROBERTSON GUIDRYOF AL RECORDS OF LEON COUNTY, TEXAS, AND THE NORTHERLY LINE HEREOF, THE FOLLOWING COURSES AND DISTANCES:

2" IRON PIN FOUND WITH "TREE" CAP AT THE SOUTHEASTERLY CORNER OF SAID 7.603 ACRE, 50FT. WIDE ROADWAY, BEING A SOUTHERLY CORNER OF SAID 14.80 ACRE TRACT AT A TANCE OF 259.27' TO A 1/2" IRON PIN FOUND WITH "TREE" CAP;

E OF 312.89' PASSING A FOUND 1/2" IRON PIN WITH "TREE" CAP AT THE SOUTHEAST CORNER OF SAID 14.80 ACRE TRACT, AND BEING THE SOUTHWESTERLY CORNER OF SAID OF 1161.89' TO A 1/2" IRON ROD SET WITH PLASTIC CAP STAMPED "CUPLIN" FOR THE NORTHEAST CORNER HEREOF, WHENCE A 3/4" IRON ROD FOUND NEAR A FENCE CORNER AT IT TRACT, ALONG THE WEST LINE OF A CALLED 109.30 ACRE TRACT AS SHOWN ON DOCUMENT TO GARY LYNN COOGLER, II IN VOLUME 1724, PAGE 130 OF THE OFFICIAL RECORDS OF RNER OF SAID 378.00 ACRE TRACT BEARS SOUTH 56°47'45" EAST, AT A DISTANCE OF 858.34';

RE TRACT AND ALONG THE EASTERLY LINE HEREOF, THE FOLLOWING COURSES AND DISTANCES:

783.71 FEET TO A 3/4" IRON ROD FOUND FOR ANGLE POINT HEREOF;

2" OF 259.27' TO A 1" POST FOR CORNER;

2" OF 216.45' TO A DEAD 12" POST OAK TREE;

2" OF 102.56' TO A 1" POST FOR CORNER; AND

UNCE OF 274.55' TO A 1/2" IRON PIN SET WITH PLASTIC CAP STAMPED "CUPLIN" NEAR THE BASE OF A 6" PINE FENCE CORNER POST AT THE SOUTHWEST CORNER OF A 2N DOCUMENT TO SABRINA GOODCHILD IN VOLUME 1758, PAGE 524 OF THE OFFICIAL RECORDS OF LEON COUNTY;

VO THE SOUTHERLY LINE OF SAID 15.000 ACRE TRACT, AND A NORTHERLY HEREOF, A DISTANCE OF 356.73' TO A 1/2" IRON PIN SET WITH PLASTIC CAP STAMPED "CUPLIN" NEAR THE 1" OF A CALLED 2.645 ACRE NON-EXCLUSIVE RIGHT-OF-WAY AND ROADWAY EASEMENT AS DESCRIBED IN VOLUME 443, PAGE 181 OF THE OFFICIAL RECORDS OF LEON COUNTY, KNOWN NORTHEAST CORNER OF SAID 0.327 ACRE TRACT, WHENCE A FOUND 1/2" IRON PIN AT THE SOUTHEAST CORNER OF SAID 15.000 ACRE TRACT BEARS SOUTH 57°47'36" EAST, A

2NG A WEST LINE OF SAID 2.645 ACRE TRACT, COUNTY ROAD NO. 389, AND THE EAST LINE HEREOF, A DISTANCE OF 40.01' TO A 1/2" IRON PIN SET WITH PLASTIC CAP LINE OF A CALLED 20.752 ACRE TRACT, SAVE AN EXCEPT 2.00 ACRES AS SHOWN ON DOCUMENT TO SABRINA GOODCHILD IN VOLUME 1758, PAGE 524 OF THE OFFICIAL RECORDS OF ER OF SAID 2.645 ACRE TRACT, AND BEING A SOUTHEAST CORNER HEREOF;

2NG THE NORTH LINE OF SAID 20.752 ACRE TRACT, AND THE SOUTH LINE HEREOF, A DISTANCE OF 355.79' TO A 1/2" IRON PIN FOUND NEAR THE BASE OF A 6" PINE FENCE 1" OF SAID 20.752 ACRE TRACT AND A REENTRANT CORNER HEREOF;

VO THE WESTERLY LINE OF SAID 20.752 ACRE TRACT, GENERALLY ALONG A FENCE, A DISTANCE OF 52.85' TO A 1/2" IRON PIN SET WITH PLASTIC CAP STAMPED "CUPLIN" NEAR THE OR A SOUTHEAST CORNER HEREOF;

RALLY ALONG A FENCE, A DISTANCE OF 50.95' TO A 5/8" IRON PIN FOUND NEAR THE BASE OF A 6" PINE FENCE CORNER POST AT THE NORTHWEST CORNER OF SAID 20.752 ACRE

IF WESTERLY LINE OF SAID 20.752 ACRE TRACT, AND HEREOF, GENERALLY ALONG A WIRE FENCE, A DISTANCE OF 711.60' TO A 1/2" IRON PIN SET WITH PLASTIC CAP STAMPED OF;

RE TRACT, THE FOLLOWING COURSES AND DISTANCES:

324.99' TO A 1/2" IRON PIN SET WITH PLASTIC CAP STAMPED "CUPLIN" FOR A REENTRANT CORNER HEREOF;

574.27' TO A 1/2" IRON ROD SET WITH PLASTIC CAP STAMPED "CUPLIN" FOR ANGLE POINT HEREOF;

1 823.89' TO A 1/2" IRON ROD SET WITH PLASTIC CAP STAMPED "CUPLIN" ALONG THE NORTHERLY LINE OF A CALLED 147 ACRE TRACT AS DESCRIBED IN DOCUMENT TO EUGENE THE OFFICIAL RECORDS OF LEON COUNTY, FOR THE SOUTHERNMOST SOUTHEAST CORNER HEREOF

ID 147 ACRE TRACT, WITH AN OLDER WIRE FENCE AS OCCUPIED AND LOCATED ON THE GROUND, THE FOLLOWING COURSES AND DISTANCES:

200.24' TO A 20" POST OAK TREE;

642.12' TO A 1" POST;

732.39' TO A 6" PINE FENCE CORNER POST;

544.57' TO A 6" PINE FENCE CORNER POST AT THE SOUTHEAST SIDE OF A 13' WIDE GATE;

354.33' TO A 12" PINE CREOSOTED FENCE CORNER POST;

958.03' TO A 1" POST;

618.08' TO A 1" POST;

F 364.43' TO A 1/2" IRON PIN FOUND NEAR THE BASE OF A DEAD 24" POST OAK TREE, FOR THE NORTHWEST CORNER OF SAID 147 ACRE SHEPHERD TRACT, A SOUTHEASTERLY SOUTHWESTERLY CORNER HEREOF;

SAID 597.65 ACRE TRACT, AND THE SOUTHWESTERLY LINE HEREOF, THE FOLLOWING COURSES AND DISTANCES:

1 WITH A FENCE, A DISTANCE OF 35.07' TO A 6" CEDAR FENCE POST;

2 AND RUNNING GENERALLY SOUTHEAST OF SAID FENCE, OF A DISTANCE OF 195.72' TO A 20" BLACK JACK OAK TREE FOR CORNER;

335.41' TO A DEAD POST OAK;

VOE OF 40.44' TO A 1/2" IRON PIN SET WITH PLASTIC CAP STAMPED "CUPLIN" CALLED TO BE ALONG THE INTERSECTION OF A NORTH-SOUTH FENCE, THE NORTHERLY LINE OF THE E SOUTHERLY LINE OF THE J.A. SMITH SURVEY, ABSTRACT NO. 793;

D SURVEY LINE, DEPARTING SAID FENCE, A DISTANCE OF 117.65' TO A 1/2" IRON PIN SET WITH PLASTIC CAP STAMPED "CUPLIN" AT THE CALLED INTERIOR CORNER OF SAID HUGH

CEDAR FENCE POST ON-LINE AT A DISTANCE OF 1709', AND CONTINUING GENERALLY ALONG SAID FENCE AND COMMON DEED LINES FOR A TOTAL DISTANCE OF 2272.21' TO THE TO CONTAIN 354.64 ACRES.

LINE TABLE		
LINE	BEARING	DISTANCE
L1	N34°14'31"E	228.34'
(L1)	N38°28'35"E	228.41'
L2	S36°39'43"W	259.27'
(L2)	S45°14'48"W	265.56'
L3	S32°18'06"W	216.45'
(L3)	S32°27'19"W	270.13'
L4	S19°52'47"W	102.56'
(L4)	S23°09'21"W	105.21'
L5	S30°00'36"W	274.55'
(L5)	S33°34'05"W	---
L6	S31°21'20"W	40.01'
(L6)	S34°56'31"W	40.00'
L7	S30°00'36"W	52.85'
(L7)	S33°34'05"W	---
L8	N55°28'18"W	50.95'
(L8)	N52°31'36"W	50.54'
L9	N88°03'37"E	35.07'
(L9)	N89°31'57"E	35.21'
L10	N48°34'33"E	195.72'
L11	N01°58'06"W	40.44'
(L11)	N04°35'23"W	41.92'
L12	N62°12'02"E	117.65'
(L12)	N64°56'49"E	114.43'
L13	N32°17'16"E	59.90'
(L13)	N34°34'14"E	60.00'
L14	S57°47'36"E	356.73'
(L14)	S55°01'32"E	356.73'
L15	N57°47'36"W	355.79'
(L15)	N55°01'32"W	355.79'
L16	N55°39'29"W	100.04'
(L16)	N55°39'29"W	107.62'
L17	N55°39'29"W	107.62'
(L17)	N55°39'29"W	70.30'
L18	N55°39'29"W	70.30'
(L18)	N55°39'29"W	70.30'
L19	S55°39'29"W	70.30'
(L19)	S55°39'29"W	131.01'
L20	S36°23'11"W	195.71'
(L20)	S36°23'11"W	195.71'
L21	S36°23'11"W	195.71'
(L21)	S36°23'11"W	114.90'
L22	S24°53'39"E	97.11'
(L22)	S24°53'39"E	97.11'

CURVE TABLE					
CURVE	DELTA ANGLE	RADIUS	ARC LEN	CHD LEN	CHD BRG
C1	90°00'00"	10.00'	15.71'	14.14'	S79°20'31"W
C2	90°00'00"	10.00'	15.71'	14.14'	N79°20'31"E
C3	90°00'00"	10.00'	15.71'	14.14'	S10°39'29"E
C4	90°00'00"	10.00'	15.71'	14.14'	S10°39'29"E
C5	11°04'45"	330.04'	63.82'	63.72'	S61°11'51"E
C6	11°04'45"	270.03'	52.22'	52.13'	S61°11'51"E
C7	10°38'46"	270.03'	50.17'	50.10'	S61°24'50"E
C8	10°38'46"	330.04'	61.32'	61.24'	N61°24'50"W
C9	90°00'00"	10.00'	15.71'	14.14'	N1°05'28"W
C10	90°00'00"	10.00'	15.71'	14.14'	N78°54'32"E
C11	16°55'28"	270.03'	79.78'	79.47'	S25°28'49"W
C12	16°55'28"	330.04'	97.49'	97.14'	S25°28'49"W
C13	15°10'48"	330.04'	87.44'	87.19'	S24°34'28"W
C14	15°10'48"	270.03'	71.54'	71.33'	S24°34'28"W
C15	9°59'35"	270.03'	47.10'	47.04'	S27°10'04"W
C16	9°59'35"	330.04'	57.56'	57.49'	S27°10'04"W
C17	55°09'00"	10.00'	9.63'	9.26'	S05°24'13"E
C18	55°09'00"	10.00'	9.63'	9.26'	S49°44'47"W
C19	180°00'00"	60.01'	188.52'	120.01'	N90°00'00"W
C20	90°00'00"	10.00'	15.71'	14.14'	N76°49'11"E
C21	90°00'00"	10.00'	15.71'	14.14'	N13°10'49"W
C22	56°42'51"	330.04'	326.69'	313.52'	N03°27'46"E
C23	56°42'51"	270.03'	267.29'	256.51'	N03°27'46"E
C24	15°46'48"	330.04'	90.89'	90.89'	N17°00'15"W
C25	15°46'48"	270.03'	74.37'	74.14'	N17°00'15"W
C26	9°06'51"	330.04'	52.50'	52.45'	N04°33'26"W
C27	9°06'51"	270.03'	42.98'	42.91'	N04°33'26"W
C28	55°09'00"	10.00'	9.63'	9.26'	N27°34'30"W
C29	55°09'00"	10.00'	9.63'	9.26'	S27°34'30"W
C30	55°09'00"	60.01'	57.76'	55.56'	N27°34'30"E
C31	4°34'09"	270.03'	21.52'	21.52'	N55°53'49"W
C32	4°34'09"	330.04'	26.30'	26.30'	N55°53'49"W
C33	90°00'00"	10.00'	15.71'	14.14'	S08°36'49"E
C34	90°00'00"	10.00'	15.71'	14.14'	S81°23'11"W
C35	5°17'49"	270.03'	24.98'	24.96'	N33°44'17"E
C36	5°17'49"	330.04'	30.51'	30.50'	N33°44'17"E
C37	55°09'00"	10.00'	9.63'	9.26'	N03°30'52"E
C38	55°09'00"	10.00'	9.63'	9.26'	S56°39'28"W
C39	180°00'00"	60.01'	188.52'	120.01'	N90°00'00"E
C40	3°06'37"	330.04'	17.92'	17.91'	N34°49'53"E
C41	3°06'37"	270.03'	14.66'	14.66'	S34°49'53"W
C42	79°57'44"	330.04'	460.61'	424.13'	S73°15'26"W
C43	79°57'44"	270.03'	376.86'	347.01'	S73°15'26"W
C44	66°20'11"	330.04'	382.12'	361.13'	N33°35'36"W
C45	66°20'11"	270.03'	312.64'	295.47'	S33°35'36"E
C46	55°09'00"	10.00'	9.63'	9.26'	N27°08'59"E
C47	55°09'00"	10.00'	9.63'	9.26'	N28°00'01"W
C48	180°00'00"	60.01'	188.52'	120.01'	N90°00'00"E
C49	68°59'52"	60.01'	72.26'	67.98'	S42°49'21"W
C50	84°51'15"	59.56'	88.21'	80.37'	S33°43'06"E
C51	61°43'47"	60.01'	64.65'	61.57'	S73°22'30"W
C52	75°29'20"	60.01'	79.08'	73.47'	S04°45'56"W
C53	86°36'40"	59.61'	100.51'	89.02'	N07°16'08"W
C54	97°57'27"	60.01'	60.70'	58.15'	N69°35'27"E
C55	136°17'10"	59.86'	142.38'	111.11'	N13°22'28"W
C56	72°06'11"	60.01'	75.52'	70.63'	S50°11'17"W
C57	93°55'03"	60.01'	98.36'	87.71'	N32°49'20"W
C58	51°19'20"	60.01'	53.75'	51.97'	N74°33'29"E
C59	72°57'27"	60.01'	76.41'	71.35'	S12°25'05"W
C60	69°11'12"	59.63'	72.01'	67.72'	S19°50'58"W
C61	72°45'10"	60.01'	76.20'	71.18'	N51°00'39"W
C62	71°09'51"	60.01'	74.53'	69.83'	N5°01'50"E
C63	77°01'26"	60.01'	80.67'	74.73'	N17°03'48"W
C64	6°26'25"	270.03'	30.35'	30.34'	N05°53'39"W
C65	2°40'27"	270.03'	12.60'	12.60'	N01°20'13"W
C66	33°25'12"	330.04'	192.51'	189.79'	S49°59'10"W
C67	36°00'28"	330.04'	207.42'	204.02'	S84°42'00"W
C68	10°32'03"	330.04'	60.68'	60.68'	S77°01'43"E
C70	18°22'19"	330.04'	105.83'	105.58'	S57°34'32"E
C71	13°05'39"	270.03'	61.71'	61.58'	S60°12'52"E
C72	53°14'32"	270.03'	250.93'	242.00'	N27°02'47"W
C73	30°52'14"	330.04'	177.82'	175.68'	S32°57'15"E
C74	17°05'37"	330.04'	98.47'	98.10'	S08°58'20"E
C75	04°1'02"	270.03'	3.22'	3.22'	S31°49'21"W
C76	9°18'33"	270.03'	43.87'	43.83'	N26°49'33"E

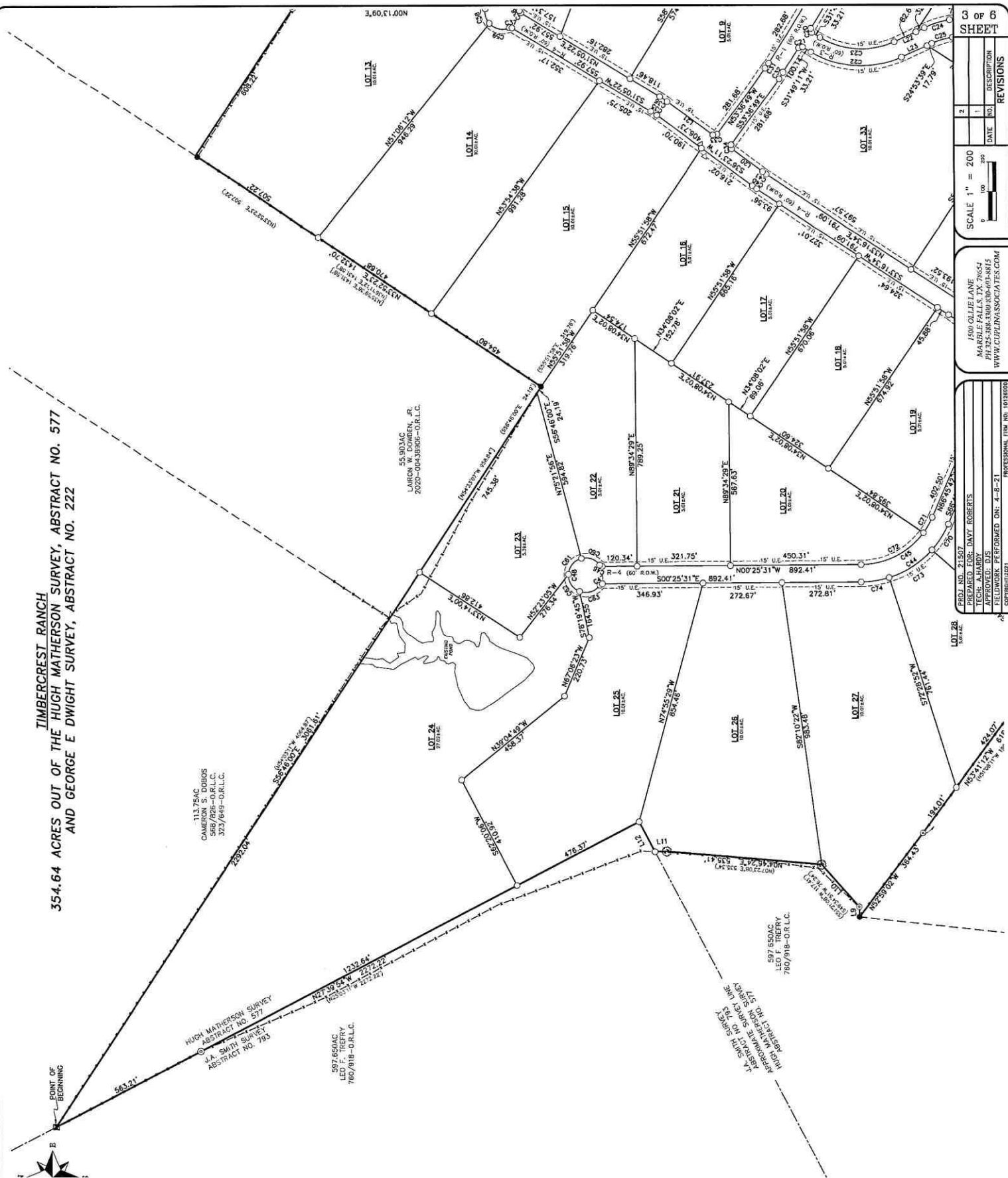
TIMBERCREST RANCH
354.64 ACRES OUT OF THE HUGH MATHERSON SURVEY, ABSTRACT NO. 577
AND GEORGE E DWIGHT SURVEY, ABSTRACT NO. 222

DEVELOPER:
DAVE ROBERTS
LONESTAR LAND PARTNERS
P.O. BOX 1987
MARBLE FALLS, TX. 78654

PROJ. NO. 21507
PREPARED FOR: DAVE ROBERTS
TECH: A.HARDY
APPROVED: DJS
FIELDWORK PERFORMED ON: 4-8-21
COPYRIGHT: 2021
PROFESSIONAL FIRM NO: 10128800

1500 OLLIE LANE
MARBLE FALLS, TX. 78654
PH.325-388-3300 FAX.693-8815
WWW.CUPLINASSOCIATES.COM

TIMBERCREST RANCH
354.64 ACRES OUT OF THE HUGH MATHERSON SURVEY, ABSTRACT NO. 577
AND GEORGE E DWIGHT SURVEY, ABSTRACT NO. 222



3 OF 6
SHEET

REVISIONS	
NO.	DESCRIPTION
1	
2	

SCALE 1" = 200'

1500 OLLIE LANE

MARBLE FALLS, TX 76654

PH 325-386-3300 FAX 325-601-8815

WWW.CUPLINASOCIATES.COM

PROJ. NO. 21507

PREPARED FOR: DAVE ROBERTS

TECH: ALABOY

APPROVED: DJS

FIELDWORK PERFORMED ON: 4-8-21

PROFESSIONAL ITEM NO. 10128000

COPYRIGHT © 2021