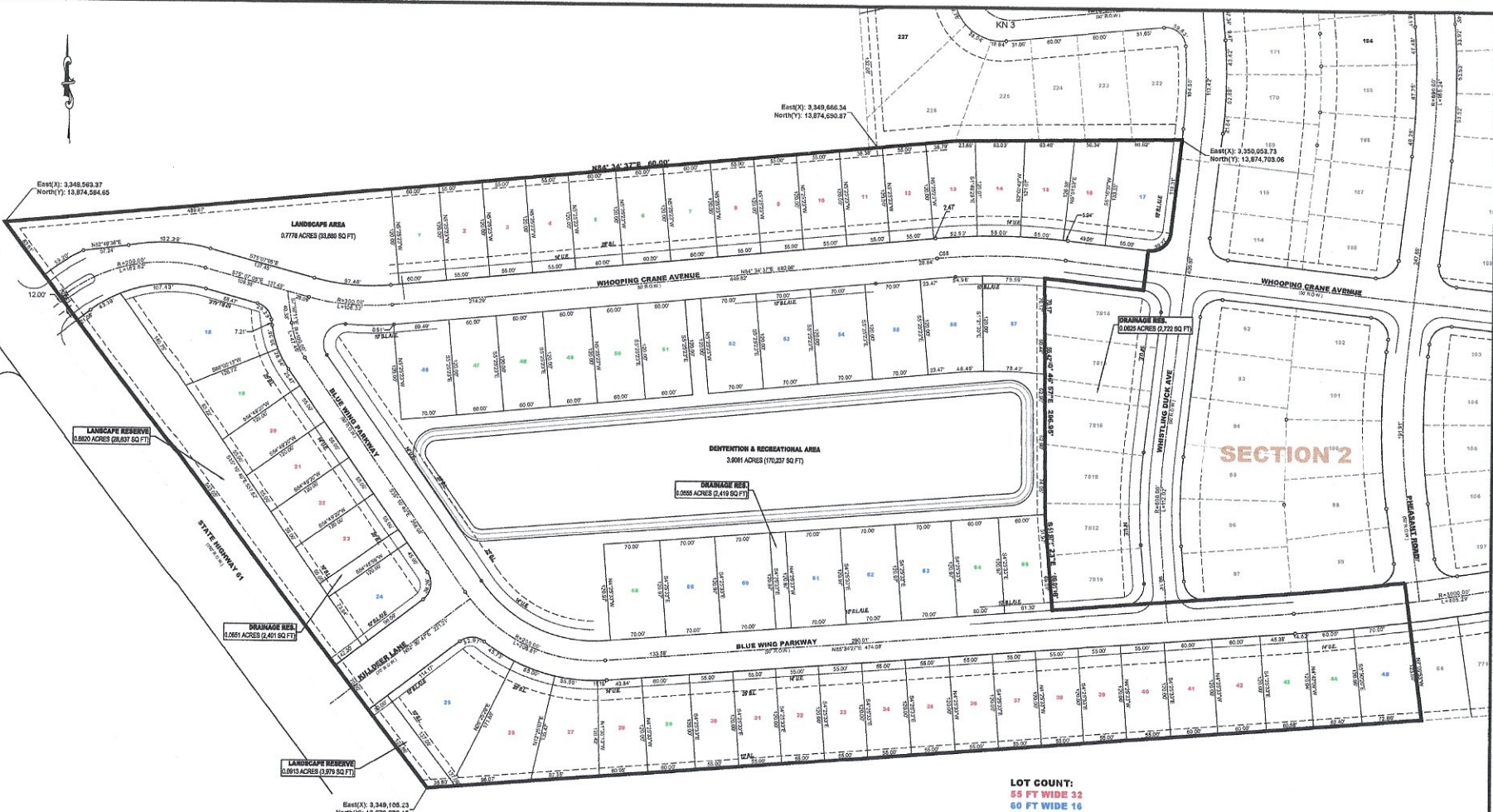


Legend

- Geotechnical Borings 35' Depth Locations
- Geotechnical Boring 30' Depth Locations
- Geotechnical Borings 25' Depth Locations

HTS, Inc. Consultants			
Proposed Utilities, Roadways, Detention Pond, and Lift Station Riverview Estates Chambers County, Texas			
DRAWN BY:	IAT	DATE:	06-24-22
CHECKED BY:	JH	DATE:	06-24-22
HTS PROPOSAL NO.:	22-S-245		FIGURE:
Boring Locations			2
		SCALE:	NTS



17.4827 acres Section 1 x0.75
ac-ft/acre = 13.112 ac-ft
required

LOT COUNT:
55 FT WIDE 32
60 FT WIDE 16
70 FT WIDE 17
TOTAL: 65

17.4827 acres Section 1 x0.75 ac-ft/acre = 13.112 ac-ft required
 APP REVISIONS DATE

DESIGNED: JC
 DRAWN: LR
 CHECKED: JC
 SCALE: SCALE: 1" = 80'


HUTCHINSON & ASSOCIATES
 ENGINEERS, LAND PLANNERS, SURVEYORS
 ENGINEERING FIRM # F-287
 SURVEYING FIRM # 100293-00
 www.ha-tx.com

BLUE WING SUBDIVISION (SECTION 1)
 MASTER PLAN LAND PLAN
 CHAMBERS COUNTY, ANAHUAC, TEXAS

Feb. 13, 2023
 JOB # 5927
 SHEET: OF