

18904 West Grand Pine Circle
 Lot 17, Block 3, of GRAND HARBOR, Section 12, a subdivision in Montgomery County, Texas, according to the map or plat thereof recorded in Public Survey L, Sheet 209 of the Map Records of Montgomery County, Texas.



SURVEYOR'S CERTIFICATE

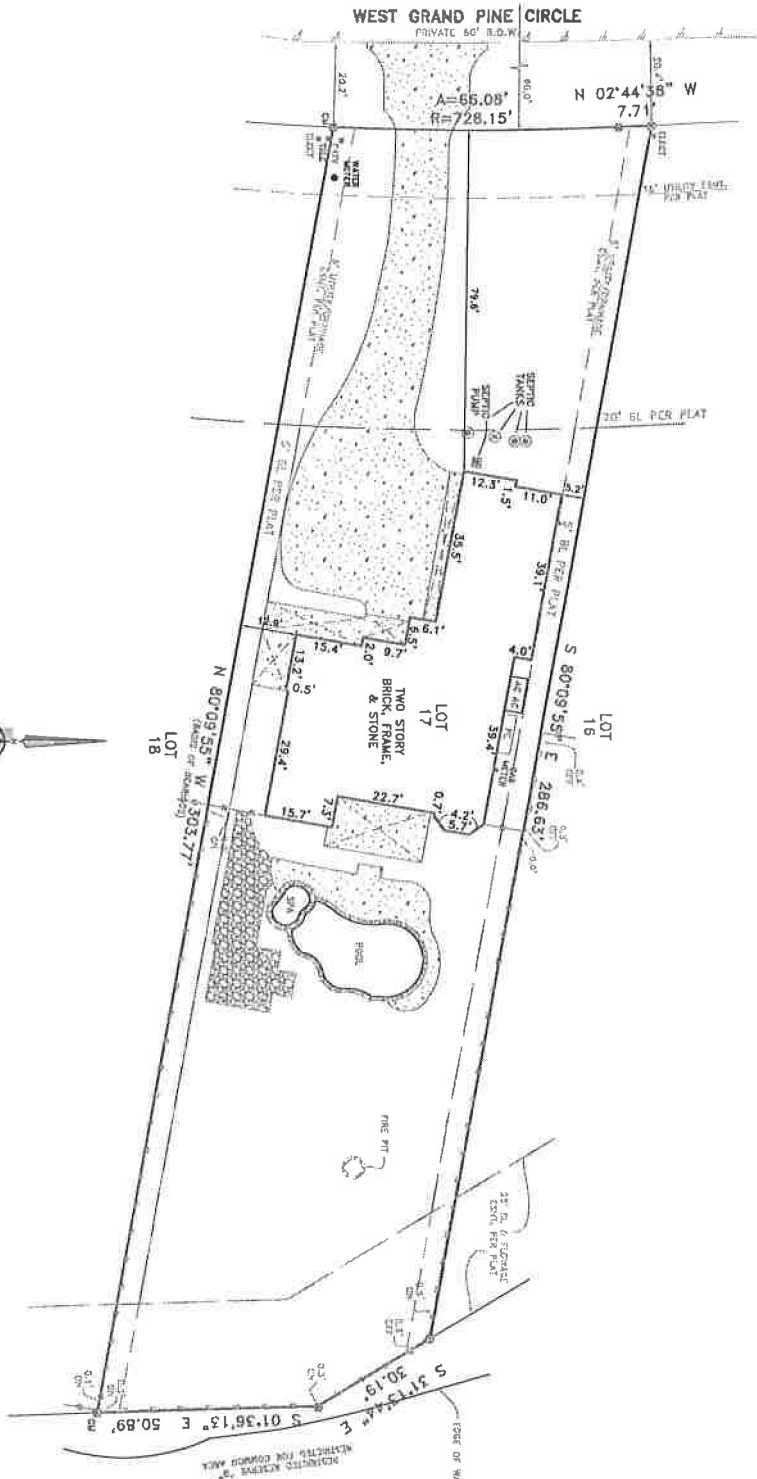
The undersigned Registered Professional Land Surveyor hereby certifies to Henry M. Weissborn, Jr. and Suzanne K. Weissborn, Old Republic National Title Insurance Company and Partners Title Company that, (a) this plat of survey and the property description set forth hereon were prepared from a true and correct survey of the real property Grand Harbour Section 12, as described in C.M.N. 2010015813, and shown hereon; (b) such survey was conducted by the Surveyor, or under his direct supervision, and the location, size and type of material thereof are correctly shown; (c) except as shown hereon there are no observable protrusions on to the Property or observable indentations therefrom, there are no observable discrepancies, conflicts, shortages in area or boundary line conflicts; (d) the size, location and type of improvements, if any, are shown hereon, and all are located within the boundaries of the Property, and set back from the Property less the distances indicated; (e) the distance from the nearest intersection street or road is as shown; (f) the Property has apparent access to and from a public roadway; (g) recorded easements listed hereon have been labeled and platted hereon; (h) the boundaries, dimensions and other details shown hereon are shown to the appropriate accuracy standards of the State of Texas; (i) the Property is not located in a 100 Year Flood Plain or in an identified Flood Prone Area as defined by the U. S. Department of Housing and Urban Development (Federal Emergency Role Map Control Panel No. 46333006, pursuant to the Flood Disaster Protection Act of 1973 (amended date if amended)).

The surveyor expressly understands and agrees that entities mentioned above are entitled to rely on this survey as having been performed to the appropriate standards of the current (2021 Edition) Texas Society of Professional Surveyors Standards and Specifications for a Category 1A, Condition II Survey.

Use of this survey by any other parties and/or for other purposes shall be at user's own risk and any loss resulting therefrom shall not be the responsibility of the undersigned.

EXECUTED this 29th day of April, 2024.

Registered Professional Land Surveyor



NOTE: According to the F.R.M. in Map No. 4833902006, this property does lie in Zone X.

ACCEPTED BY

[Signature]

DATE

5/16/24

DATE

DATE

NOTE: PROPERTY SUBJECT TO EASES, ENCUMBRANCES, AND EASEMENTS CONTAINED IN INSTRUMENTS RECORDED IN VOL. 2, PG. 206 OF BOOK 2007-13888, 2009-01878, 2010-01748, 2011-01780, 2011-03241, 2011-03258, 2011-03259, 2011-03260, 2011-03261, 2011-03262, 2011-03263, 2011-03264, 2011-03265, 2011-03266, 2011-03267, 2011-03268, 2011-03269, 2011-03270, 2011-03271, 2011-03272, 2011-03273, 2011-03274, 2011-03275, 2011-03276, 2011-03277, 2011-03278, 2011-03279, 2011-03280, 2011-03281, 2011-03282, 2011-03283, 2011-03284, 2011-03285, 2011-03286, 2011-03287, 2011-03288, 2011-03289, 2011-03290, 2011-03291, 2011-03292, 2011-03293, 2011-03294, 2011-03295, 2011-03296, 2011-03297, 2011-03298, 2011-03299, 2011-03300, 2011-03301, 2011-03302, 2011-03303, 2011-03304, 2011-03305, 2011-03306, 2011-03307, 2011-03308, 2011-03309, 2011-03310, 2011-03311, 2011-03312, 2011-03313, 2011-03314, 2011-03315, 2011-03316, 2011-03317, 2011-03318, 2011-03319, 2011-03320, 2011-03321, 2011-03322, 2011-03323, 2011-03324, 2011-03325, 2011-03326, 2011-03327, 2011-03328, 2011-03329, 2011-03330, 2011-03331, 2011-03332, 2011-03333, 2011-03334, 2011-03335, 2011-03336, 2011-03337, 2011-03338, 2011-03339, 2011-03340, 2011-03341, 2011-03342, 2011-03343, 2011-03344, 2011-03345, 2011-03346, 2011-03347, 2011-03348, 2011-03349, 2011-03350, 2011-03351, 2011-03352, 2011-03353, 2011-03354, 2011-03355, 2011-03356, 2011-03357, 2011-03358, 2011-03359, 2011-03360, 2011-03361, 2011-03362, 2011-03363, 2011-03364, 2011-03365, 2011-03366, 2011-03367, 2011-03368, 2011-03369, 2011-03370, 2011-03371, 2011-03372, 2011-03373, 2011-03374, 2011-03375, 2011-03376, 2011-03377, 2011-03378, 2011-03379, 2011-03380, 2011-03381, 2011-03382, 2011-03383, 2011-03384, 2011-03385, 2011-03386, 2011-03387, 2011-03388, 2011-03389, 2011-03390, 2011-03391, 2011-03392, 2011-03393, 2011-03394, 2011-03395, 2011-03396, 2011-03397, 2011-03398, 2011-03399, 2011-03400, 2011-03401, 2011-03402, 2011-03403, 2011-03404, 2011-03405, 2011-03406, 2011-03407, 2011-03408, 2011-03409, 2011-03410, 2011-03411, 2011-03412, 2011-03413, 2011-03414, 2011-03415, 2011-03416, 2011-03417, 2011-03418, 2011-03419, 2011-03420, 2011-03421, 2011-03422, 2011-03423, 2011-03424, 2011-03425, 2011-03426, 2011-03427, 2011-03428, 2011-03429, 2011-03430, 2011-03431, 2011-03432, 2011-03433, 2011-03434, 2011-03435, 2011-03436, 2011-03437, 2011-03438, 2011-03439, 2011-03440, 2011-03441, 2011-03442, 2011-03443, 2011-03444, 2011-03445, 2011-03446, 2011-03447, 2011-03448, 2011-03449, 2011-03450, 2011-03451, 2011-03452, 2011-03453, 2011-03454, 2011-03455, 2011-03456, 2011-03457, 2011-03458, 2011-03459, 2011-03460, 2011-03461, 2011-03462, 2011-03463, 2011-03464, 2011-03465, 2011-03466, 2011-03467, 2011-03468, 2011-03469, 2011-03470, 2011-03471, 2011-03472, 2011-03473, 2011-03474, 2011-03475, 2011-03476, 2011-03477, 2011-03478, 2011-03479, 2011-03480, 2011-03481, 2011-03482, 2011-03483, 2011-03484, 2011-03485, 2011-03486, 2011-03487, 2011-03488, 2011-03489, 2011-03490, 2011-03491, 2011-03492, 2011-03493, 2011-03494, 2011-03495, 2011-03496, 2011-03497, 2011-03498, 2011-03499, 2011-03500, 2011-03501, 2011-03502, 2011-03503, 2011-03504, 2011-03505, 2011-03506, 2011-03507, 2011-03508, 2011-03509, 2011-03510, 2011-03511, 2011-03512, 2011-03513, 2011-03514, 2011-03515, 2011-03516, 2011-03517, 2011-03518, 2011-03519, 2011-03520, 2011-03521, 2011-03522, 2011-03523, 2011-03524, 2011-03525, 2011-03526, 2011-03527, 2011-03528, 2011-03529, 2011-03530, 2011-03531, 2011-03532, 2011-03533, 2011-03534, 2011-03535, 2011-03536, 2011-03537, 2011-03538, 2011-03539, 2011-03540, 2011-03541, 2011-03542, 2011-03543, 2011-03544, 2011-03545, 2011-03546, 2011-03547, 2011-03548, 2011-03549, 2011-03550, 2011-03551, 2011-03552, 2011-03553, 2011-03554, 2011-03555, 2011-03556, 2011-03557, 2011-03558, 2011-03559, 2011-03560, 2011-03561, 2011-03562, 2011-03563, 2011-03564, 2011-03565, 2011-03566, 2011-03567, 2011-03568, 2011-03569, 2011-03570, 2011-03571, 2011-03572, 2011-03573, 2011-03574, 2011-03575, 2011-03576, 2011-03577, 2011-03578, 2011-03579, 2011-03580, 2011-03581, 2011-03582, 2011-03583, 2011-03584, 2011-03585, 2011-03586, 2011-03587, 2011-03588, 2011-03589, 2011-03590, 2011-03591, 2011-03592, 2011-03593, 2011-03594, 2011-03595, 2011-03596, 2011-03597, 2011-03598, 2011-03599, 2011-03600, 2011-03601, 2011-03602, 2011-03603, 2011-03604, 2011-03605, 2011-03606, 2011-03607, 2011-03608, 2011-03609, 2011-03610, 2011-03611, 2011-03612, 2011-03613, 2011-03614, 2011-03615, 2011-03616, 2011-03617, 2011-03618, 2011-03619, 2011-03620, 2011-03621, 2011-03622, 2011-03623, 2011-03624, 2011-03625, 2011-03626, 2011-03627, 2011-03628, 2011-03629, 2011-03630, 2011-03631, 2011-03632, 2011-03633, 2011-03634, 2011-03635, 2011-03636, 2011-03637, 2011-03638, 2011-03639, 2011-03640, 2011-03641, 2011-03642, 2011-03643, 2011-03644, 2011-03645, 2011-03646, 2011-03647, 2011-03648, 2011-03649, 2011-03650, 2011-03651, 2011-03652, 2011-03653, 2011-03654, 2011-03655, 2011-03656, 2011-03657, 2011-03658, 2011-03659, 2011-03660, 2011-03661, 2011-03662, 2011-03663, 2011-03664, 2011-03665, 2011-03666, 2011-03667, 2011-03668, 2011-03669, 2011-03670, 2011-03671, 2011-03672, 2011-03673, 2011-03674, 2011-03675, 2011-03676, 2011-03677, 2011-03678, 2011-03679, 2011-03680, 2011-03681, 2011-03682, 2011-03683, 2011-03684, 2011-03685, 2011-03686, 2011-03687, 2011-03688, 2011-03689, 2011-03690, 2011-03691, 2011-03692, 2011-03693, 2011-03694, 2011-03695, 2011-03696, 2011-03697, 2011-03698, 2011-03699, 2011-03700, 2011-03701, 2011-03702, 2011-03703, 2011-03704, 2011-03705, 2011-03706, 2011-03707, 2011-03708, 2011-03709, 2011-03710, 2011-03711, 2011-03712, 2011-03713, 2011-03714, 2011-03715, 2011-03716, 2011-03717, 2011-03718, 2011-03719, 2011-03720, 2011-03721, 2011-03722, 2011-03723, 2011-03724, 2011-03725, 2011-03726, 2011-03727, 2011-03728, 2011-03729, 2011-03730, 2011-03731, 2011-03732, 2011-03733, 2011-03734, 2011-03735, 2011-03736, 2011-03737, 2011-03738, 2011-03739, 2011-03740, 2011-03741, 2011-03742, 2011-03743, 2011-03744, 2011-03745, 2011-03746, 2011-03747, 2011-03748, 2011-03749, 2011-03750, 2011-03751, 2011-03752, 2011-03753, 2011-03754, 2011-03755, 2011-03756, 2011-03757, 2011-03758, 2011-03759, 2011-03760, 2011-03761, 2011-03762, 2011-03763, 2011-03764, 2011-03765, 2011-03766, 2011-03767, 2011-03768, 2011-03769, 2011-03770, 2011-03771, 2011-03772, 2011-03773, 2011-03774, 2011-03775, 2011-03776, 2011-03777, 2011-03778, 2011-03779, 2011-03780, 2011-03781, 2011-03782, 2011-03783, 2011-03784, 2011-03785, 2011-03786, 2011-03787, 2011-03788, 2011-03789, 2011-03790, 2011-03791, 2011-03792, 2011-03793, 2011-03794, 2011-03795, 2011-03796, 2011-03797, 2011-03798, 2011-03799, 2011-03800, 2011-03801, 2011-03802, 2011-03803, 2011-03804, 2011-03805, 2011-03806, 2011-03807, 2011-03808, 2011-03809, 2011-03810, 2011-03811, 2011-03812, 2011-03813, 2011-03814, 2011-03815, 2011-03816, 2011-03817, 2011-03818, 2011-03819, 2011-03820, 2011-03821, 2011-03822, 2011-03823, 2011-03824, 2011-03825, 2011-03826, 2011-03827, 2011-03828, 2011-03829, 2011-03830, 2011-03831, 2011-03832, 2011-03833, 2011-03834, 2011-03835, 2011-03836, 2011-03837, 2011-03838, 2011-03839, 2011-03840, 2011-03841, 2011-03842, 2011-03843, 2011-03844, 2011-03845, 2011-03846, 2011-03847, 2011-03848, 2011-03849, 2011-03850, 2011-03851, 2011-03852, 2011-03853, 2011-03854, 2011-03855, 2011-03856, 2011-03857, 2011-03858, 2011-03859, 2011-03860, 2011-03861, 2011-03862, 2011-03863, 2011-03864, 2011-03865, 2011-03866, 2011-03867, 2011-03868, 2011-03869, 2011-03870, 2011-03871, 2011-03872, 2011-03873, 2011-03874, 2011-03875, 2011-03876, 2011-03877, 2011-03878, 2011-03879, 2011-03880, 2011-03881, 2011-03882, 2011-03883, 2011-03884, 2011-03885, 2011-03886, 2011-03887, 2011-03888, 2011-03889, 2011-03890, 2011-03891, 2011-03892, 2011-03893, 2011-03894, 2011-03895, 2011-03896, 2011-03897, 2011-03898, 2011-03899, 2011-03900, 2011-03901, 2011-03902, 2011-03903, 2011-03904, 2011-03905, 2011-03906, 2011-03907, 2011-03908, 2011-03909, 2011-03910, 2011-03911, 2011-03912, 2011-03913, 2011-03914, 2011-03915, 2011-03916, 2011-03917, 2011-03918, 2011-03919, 2011-03920, 2011-03921, 2011-03922, 2011-03923, 2011-03924, 2011-03925, 2011-03926, 2011-03927, 2011-03928, 2011-03929, 2011-03930, 2011-03931, 2011-03932, 2011-03933, 2011-03934, 2011-03935, 2011-03936, 2011-03937, 2011-03938, 2011-03939, 2011-03940, 2011-03941, 2011-03942, 2011-03943, 2011-03944, 2011-03945, 2011-03946, 2011-03947, 2011-03948, 2011-03949, 2011-03950, 2011-03951, 2011-03952, 2011-03953, 2011-03954, 2011-03955, 2011-03956, 2011-03957, 2011-03958, 2011-03959, 2011-03960, 2011-03961, 2011-03962, 2011-03963, 2011-03964, 2011-03965, 2011-03966, 2011-03967, 2011-03968, 2011-03969, 2011-03970, 2011-03971, 2011-03972, 2011-03973, 2011-03974, 2011-03975, 2011-03976, 2011-03977, 2011-03978, 2011-03979, 2011-03980, 2011-03981, 2011-03982, 2011-03983, 2011-03984, 2011-03985, 2011-03986, 2011-03987, 2011-03988, 2011-03989, 2011-03990, 2011-03991, 2011-03992, 2011-03993, 2011-03994, 2011-03995, 2011-03996, 2011-03997, 2011-03998, 2011-03999, 2011-04000, 2011-04001, 2011-04002, 2011-04003, 2011-04004, 2011-04005, 2011-04006, 2011-04007, 2011-04008, 2011-04009, 2011-04010, 2011-04011, 2011-04012, 2011-04013, 2011-04014, 2011-04015, 2011-04016, 2011-04017, 2011-04018, 2011-04019, 2011-04020, 2011-04021, 2011-04022, 2011-04023, 2011-04024, 2011-04025, 2011-04026, 2011-04027, 2011-04028, 2011-04029, 2011-04030, 2011-04031, 2011-04032, 2011-04033, 2011-04034, 2011-04035, 2011-04036, 2011-04037, 2011-04038, 2011-04039, 2011-04040, 2011-04041, 2011-04042, 2011-04043, 2011-04044, 2011-04045, 2011-04046, 2011-04047, 2011-04048, 2011-04049, 2011-04050, 2011-04051, 2011-04052, 2011-04053, 2011-04054, 2011-04055, 2011-04056, 2011-04057, 2011-04058, 2011-04059, 2011-04060, 2011-04061, 2011-04062, 2011-04063, 2011-04064, 2011-04065, 2011-04066, 2011-04067, 2011-04068, 2011-04069, 2011-04070, 2011-04071, 2011-04072, 2011-04073, 2011-04074, 2011-04075, 2011-04076, 2011-04077, 2011-04078, 2011-04079, 2011-04080, 2011-04081, 2011-04082, 2011-04083, 2011-04084, 2011-04085, 2011-04086, 2011-04087, 2011-04088, 2011-04089, 2011-04090, 2011-04091, 2011-04092, 2011-04093, 2011-04094, 2011-04095, 2011-04096, 2011-04097, 2011-04098, 2011-04099, 2011-04100, 2011-04101, 2011-04102, 2011-04103, 2011-04104, 2011-04105, 2011-04106, 2011-04107, 2011-04108, 2011-04109, 2011-04110, 2011-04111, 2011-04112, 2011-04113, 2011-04114, 2011-04115, 2011-04116, 2011-04117, 2011-04118, 2011-04119, 2011-04120, 2011-04121, 2011-04122, 2011-04123, 2011-04124, 2011-04125, 2011-04126, 2011-04127, 2011-04128, 2011-04129, 2011-04130, 2011-04131, 2011-04132, 2011-04133, 2011-04134, 2011-04135, 2011-04136, 2011-04137, 2011-04138, 2011-04139, 2011-04140, 2011-04141, 2011-04142, 2011-04143, 2011-04144, 2011-04145, 2011-04146, 2011-04147, 2011-04148, 2011-04149, 2011-04150, 2011-04151, 2011-04152, 2011-04153, 201