

# 24011 TAYLOE HOUSE LANE



## FEATURES AND AMENITIES

24011 TAYLOE HOUSE LANE WAS UPGRADED THROUGHOUT TO CREATE A WELCOMING HAVEN. THE FUNCTIONAL FLOORPLAN BOASTS A NEUTRAL COLOR PALETTE FULL OF NATURAL LIGHT, SHOWCASING THE FARMHOUSE AESTHETIC & MOVE-IN READY CANVAS.

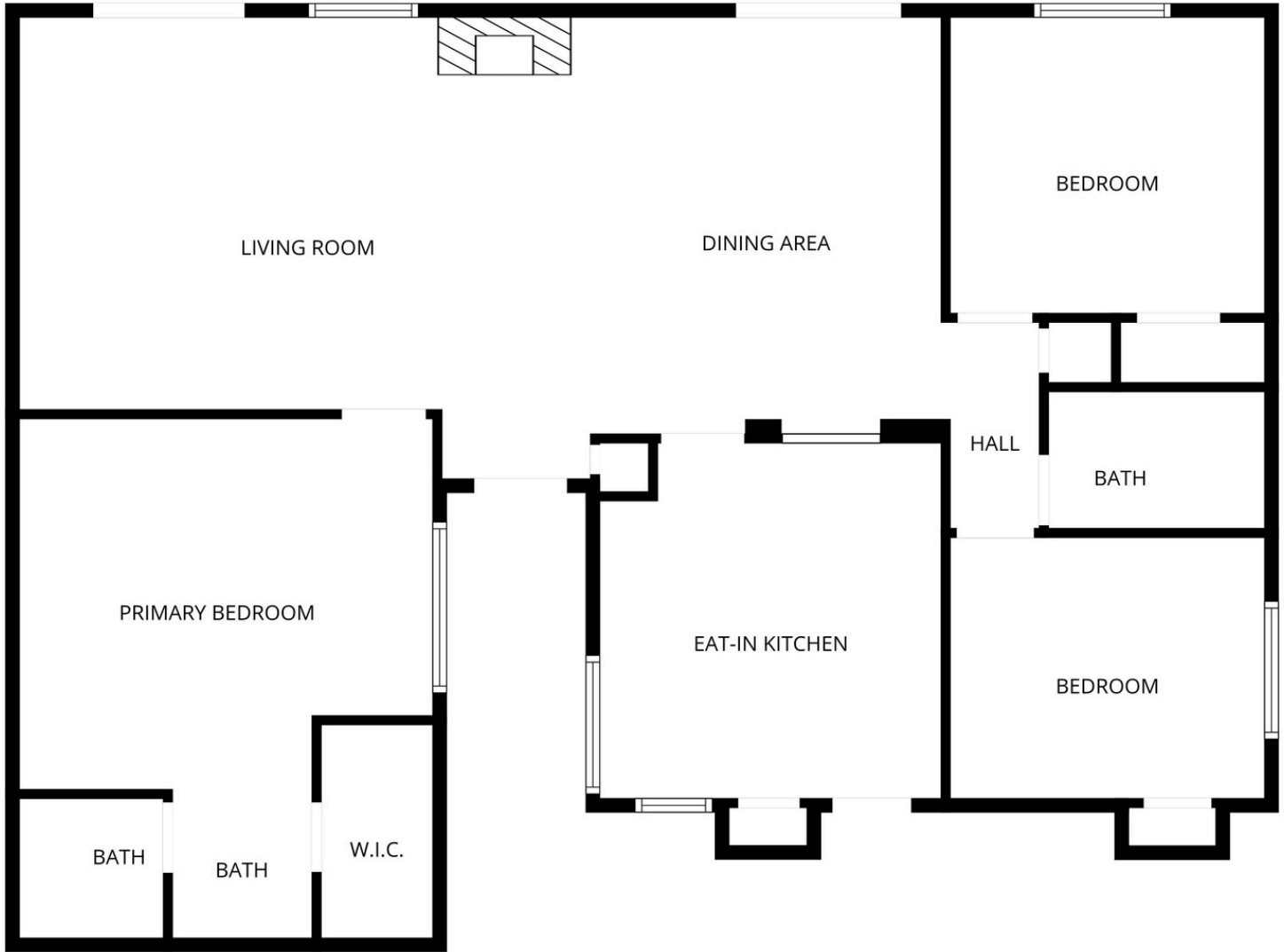
- 1,435 square feet (per HCAD)
- 3 Bedrooms/2 Bathrooms
- Single story
- Neutral paint & finishes
- Spacious eat-in kitchen
- Crisp white cabinetry
- Stainless steel appliances
- Subway backsplash
- Formal dining room/flex space
- Spacious family room w fireplace
- All solid surface tile flooring
- Updated bathrooms
- Lavish primary retreat w en-suite bathroom & walk-in closet
- Light-filled secondary bedrooms
- Expansive covered patio
- Attached 2 car garage w extra wide driveway for ample parking
- Upgraded siding, paint & gutters
- Window treatments included
- Recent HVAC, roof & water heater

*All information provided as a courtesy and should be independently verified by any prospective buyer.*

# FEATURES AND AMENITIES

- Prime location on a culdesac street in the heart of the community w end of street access to Callegari Park & easy access to the community amenities including a clubhouse, pool & park.
  - Optimal single story layout for functionality & daily enjoyment.
  - Solid surface tile flooring throughout for low maintenance and low allergen living (no carpet).
  - Neutral paint throughout for a blank canvas for the new owners.
  - Upgraded lighting & fans in many rooms.
  - Window treatments included throughout for privacy & lighting control.
  - Formal dining room for entertaining.
  - Eat-in kitchen w recently painted white cabinetry, subway backsplash, and stainless steel appliances.
  - Light-filled breakfast room in kitchen with window niches overlooking the entry.
  - Spacious living room w vaulted ceiling, charming brick fireplace & back patio access through an upgraded French door.
  - Expansive primary suite w walk-in-closet & space for a sitting area/desk.
  - Primary en-suite bathroom w upgraded vanity & remodeled shower/tub combination.
  - Split floorplan for privacy.
  - Secondary bedrooms w ceiling fans share an updated bathroom w shower/tub combination.
- System upgrades and features:**
- HVAC & thermostat replaced 2025
  - Roof replacement 2021
  - Hot water heater replacement 2020's
  - Dishwasher 2025
  - Ring doorbell
  - Upgraded toilets
  - Upgraded supply line plumbing
  - Exterior siding, soffits, gutters and paint
  - Fence on two sides replaced
  - Double pane windows on back of home and solar screens on front of home
  - Extra wide driveway for ample parking
  - Expansive covered patio was added to the home for all-season year-round enjoyment. This is tied into the roofline with composition shingles, has a concrete floor, and has lighting for enjoyment in the evening and nighttime hours.

# 24011 TAYLOE HOUSE LANE FLOOR PLAN



FLOOR PLAN CREATED BY CUBICASA APP. MEASUREMENTS DEEMED HIGHLY RELIABLE BUT NOT GUARANTEED.