



PINEHOLLOW

AN ELEVATED GATED COMMUNITY



FARB
HOMES

713-505-8805



NEW AGE
REAL ESTATE

WELCOME TO PINEHOLLOW

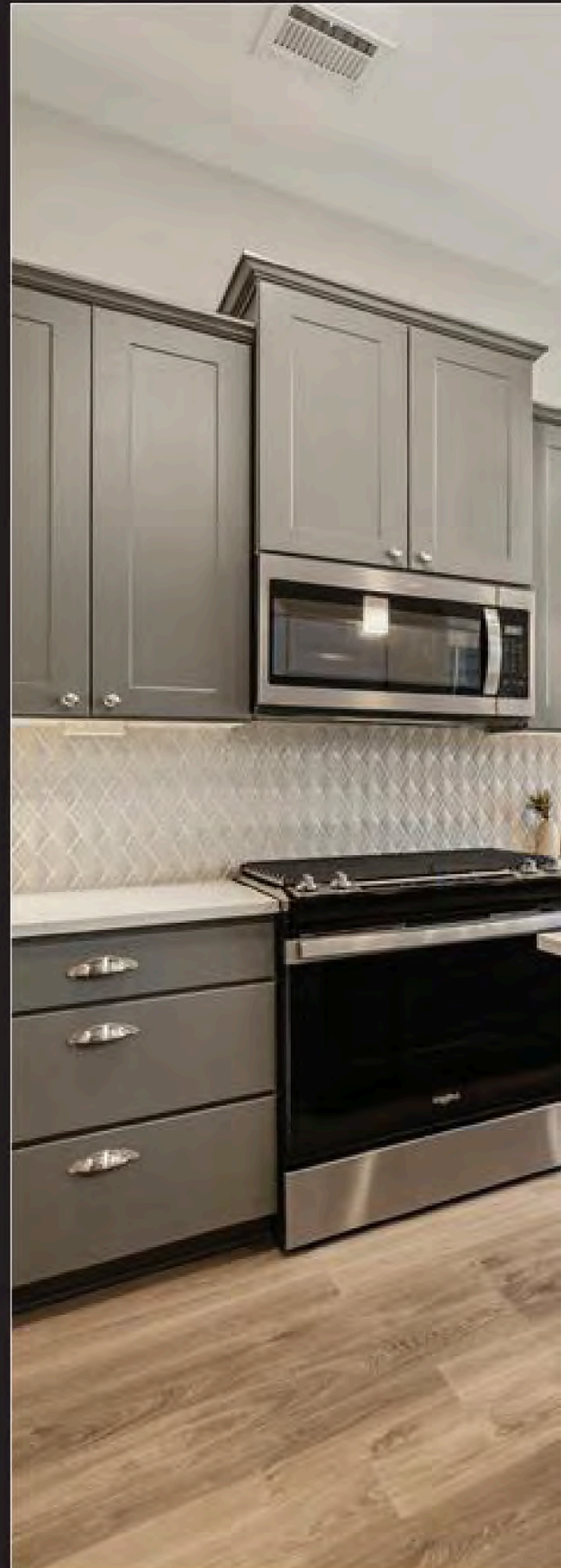
Modern Comfort • Gated Security • Central Living

Thoughtfully designed and masterfully built by Farb Homes, Pinehollow offers a private gated enclave of two-story, single-family homes tailored for today's lifestyle. Featuring first-floor open living, private fenced yards, attached two-car garages, and two distinct floor plans, Pinehollow blends style, functionality, and value in one of Houston's most desirable neighborhoods.

Perfect for first-time buyers, frequent travelers, or those seeking proximity to Houston's premier private schools and inner-loop amenities, Pinehollow combines smart design, energy efficiency, and modern finishes at an exceptional price point.

COMMUNITY FEATURES

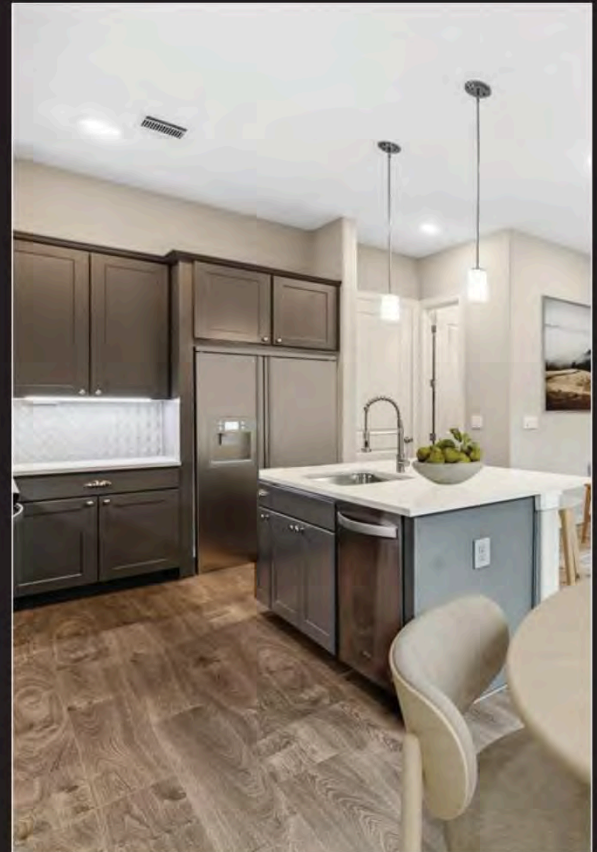
- Fully enclosed gated community
- Two-story, single-family detached residences
- First-floor open-concept living
- 3 Bedrooms | 2.5 Bathrooms
- Private fenced yards
- 2-car attached garages + private driveways
- Ample storage space in garages
- Low HOA fees





KITCHEN & LIVING

- Gourmet kitchens with quartz countertops
- Seating island with extended bar for entertaining
- Stainless steel appliance package (range, microwave, dishwasher)
- Soft-close cabinetry with undercabinet lighting
- Dedicated pantry
- Living rooms with large windows + French doors to backyard
- Powder room with pedestal sink & Moen fixtures



PRIMARY & SECONDARY SUITES

- Spacious primary bedrooms with abundant natural light
- Spa-inspired baths: double vanities, frameless glass showers, freestanding tubs
- Designer sconce lighting
- Walk-in closets with ample storage
- Secondary bedrooms with plush carpet, Hollywood bath & Moen fixtures





AMBER 3 Bed | 2.5 Bath | 2-Car Garage | 1,806 Sq Ft

Living: 11' x 11'
Kitchen: 10' x 13'
Dining: 16' x 8'
Primary: 18' x 13'
Bath: 18' x 6'

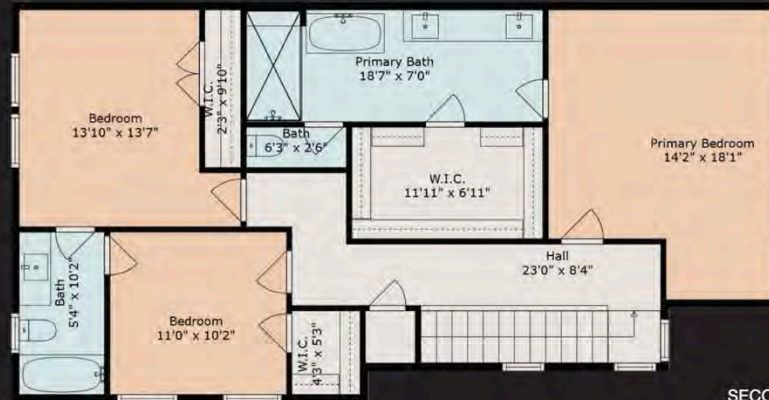
Backyard Depth: 25 ft



DAWN 3 Bed | 2.5 Bath | 2-Car Garage | 1,932 Sq Ft

Living: 16' x 11'
Kitchen: 12' x 12'
Dining: 9' x 12'
Primary: 14' x 18'
Bath: 18' x 7'

Ceiling Heights: 10', 11', 12'





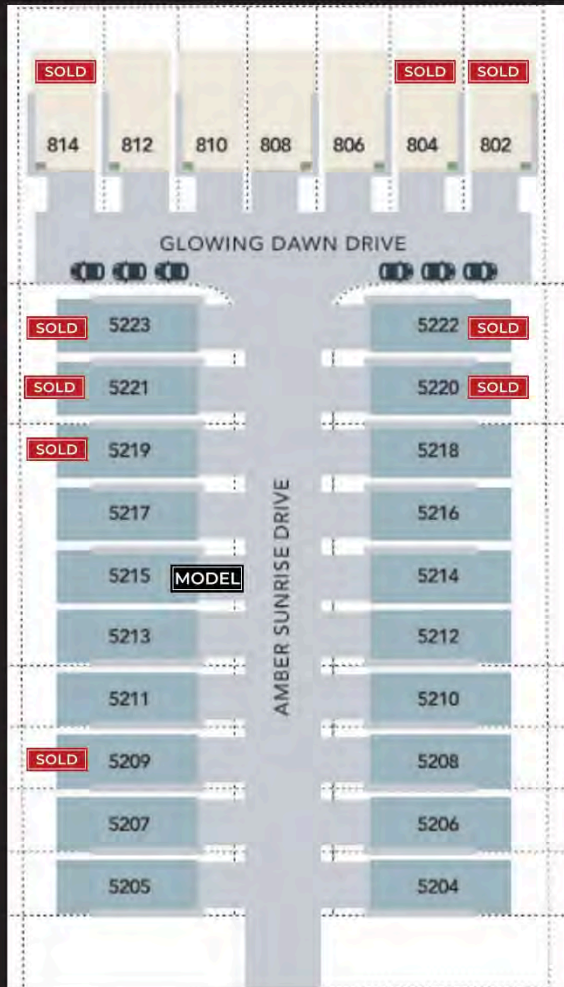
LOCATION ADVANTAGES

- Behind St. Pius X High School
- Quick access to major freeways & inner-loop Houston
- Minutes to Oak Forest shopping, dining, and entertainment

**FARB
HOMES**



PINEHOLLOW AT OAK FOREST



804 GLOWING DAWN DRIVE | DAWN
 SOLD
 3 Bedrooms | 2.5 Bathrooms | 1,932 Sq Ft

806 GLOWING DAWN DRIVE | DAWN
 \$419,700
 3 Bedrooms | 2.5 Bathrooms | 1,932 Sq Ft

808 GLOWING DAWN DRIVE | DAWN
 \$419,700
 3 Bedrooms | 2.5 Bathrooms | 1,932 Sq Ft

5204 AMBER SUNRISE DRIVE | AMBER
 \$409,700
 3 Bedrooms | 2.5 Bathrooms | 1,806 Sq Ft

5208 AMBER SUNRISE DRIVE | AMBER
 \$424,700
 3 Bedrooms | 2.5 Bathrooms | 1,806 Sq Ft

5217 AMBER SUNRISE DRIVE | AMBER
 \$424,700
 3 Bedrooms | 2.5 Bathrooms | 1,806 Sq Ft

SEVERAL ALREADY SOLD

Limited sites available - Reserve yours today!



713-505-8805

