

| | | |
|-----|--|------------|
| No. | Issue Description | YYYY-MM-DD |
| 1 | ISSUE FOR PERMIT REVIEW | 01/11/14 |
| 2 | ISSUE FOR PERMIT PRELIM AND CONSTRUCTION | 01/11/14 |

| | | |
|-----|----------------------|------------|
| No. | Revision Description | YYYY-MM-DD |
| 1 | CONSTRUCTION | 01/11/14 |
| 2 | CONSTRUCTION | 01/11/14 |

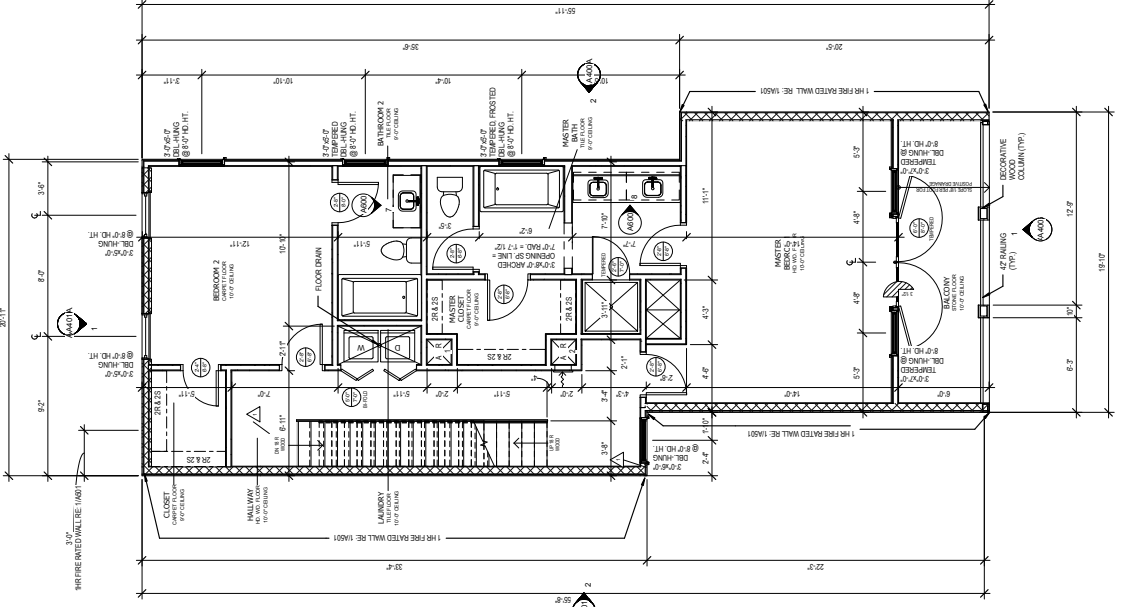
ELYSIAN
HOMES-REFERENCE
MASTER PROJECT #
141110807

FLOOR PLANS

| | |
|----------------|-----------|
| Project Number | 141037.00 |
| Drawn by | K.S. |
| Checked by | B.E. |

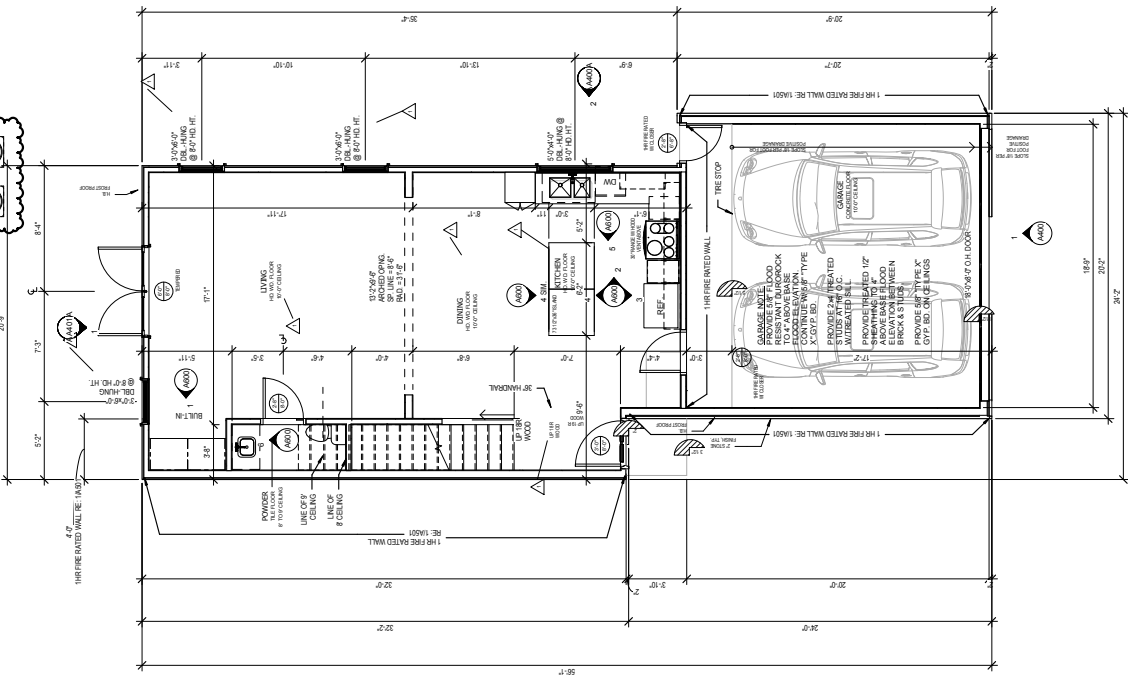
A201

| | |
|-------|--------------|
| Scale | 1/4" = 1'-0" |
|-------|--------------|



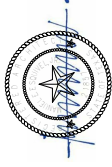
2 FLOOR PLAN - LEVEL 2
 1/4" = 1'-0"

XXXXXXXXX DESIGNATES 2x4 WOOD STUD WALL



1 FLOOR PLAN - LEVEL 1
 1/4" = 1'-0"

XXXXXXXXX DESIGNATES 2x4 WOOD STUD WALL



| | | |
|-----|--|------------|
| No. | Issue Description | YYYY-MM-DD |
| 1 | ISSUED FOR PERMITTING AND CONSTRUCTION | 2014-10-09 |

| | | |
|-----|----------------------|------------|
| No. | Revision Description | YYYY-MM-DD |
| 1 | CORR REVISION | TITLES/TA |

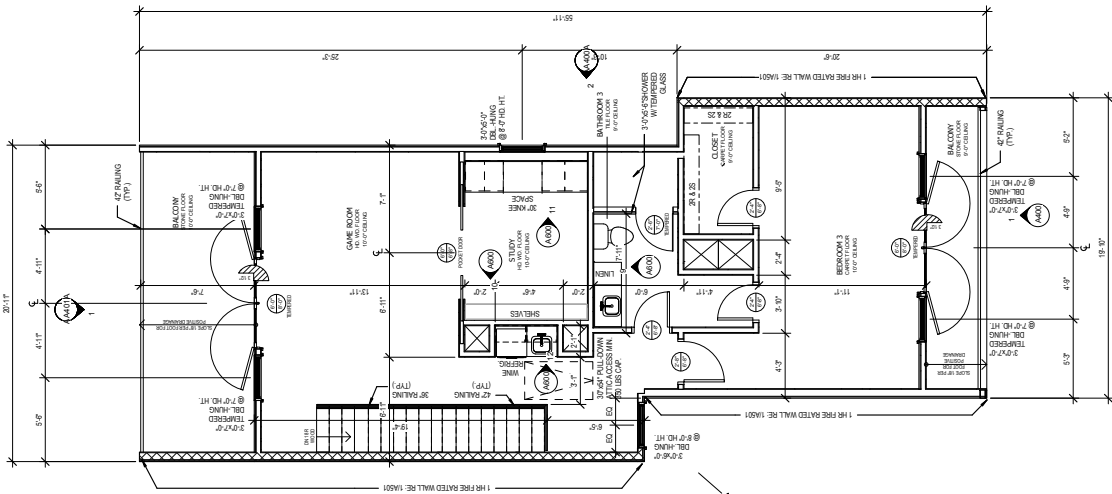
**ELYSIAN
HOMES-REFERENCE
MASTER PROJECT #
141110807**

FLOOR PLANS

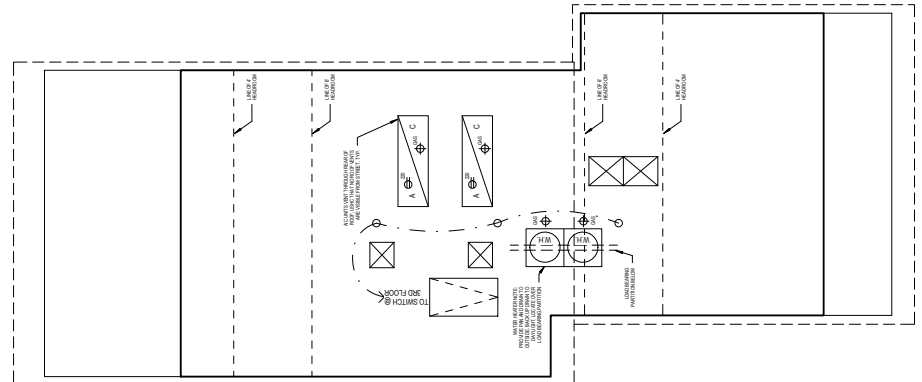
| | |
|----------------|-----------|
| Project number | 141037.00 |
| Drawn by | K.S. |
| Checked by | B.E. |

A202

| | |
|-------|--------------|
| Scale | 1/4" = 1'-0" |
|-------|--------------|



1 FLOOR PLAN - LEVEL 3
1/4" = 1'-0"



2 ATTIC PLAN
1/4" = 1'-0"

**MECCA
HOMES**

Project
**ELYSIAN
HOMES-REFERENCE
MASTER PROJECT #
141110807**

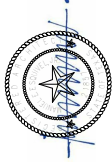
estudio

2180 NORTH LOOP WEST, SUITE 800
HOUSTON, TEXAS 77018

VOICE: 713.433.8900

FAX: 832.565.8800

ESPINOZA@ESTUDIOARCHITECTURE.COM
WWW.ESTUDIOARCHITECTURE.COM
CONTACT: BARRY ESPINOZA



No. Issue Description
1. ISSUE FOR PERMIT PRELIMINARY
2. CONSTRUCTION

No. Revision Description
1. CORRECTIONS
2. CORRECTIONS

DATE
DATE

**ELYSIAN
HOMES-REFERENCE
MASTER PROJECT #
141110807**

ELEVATIONS

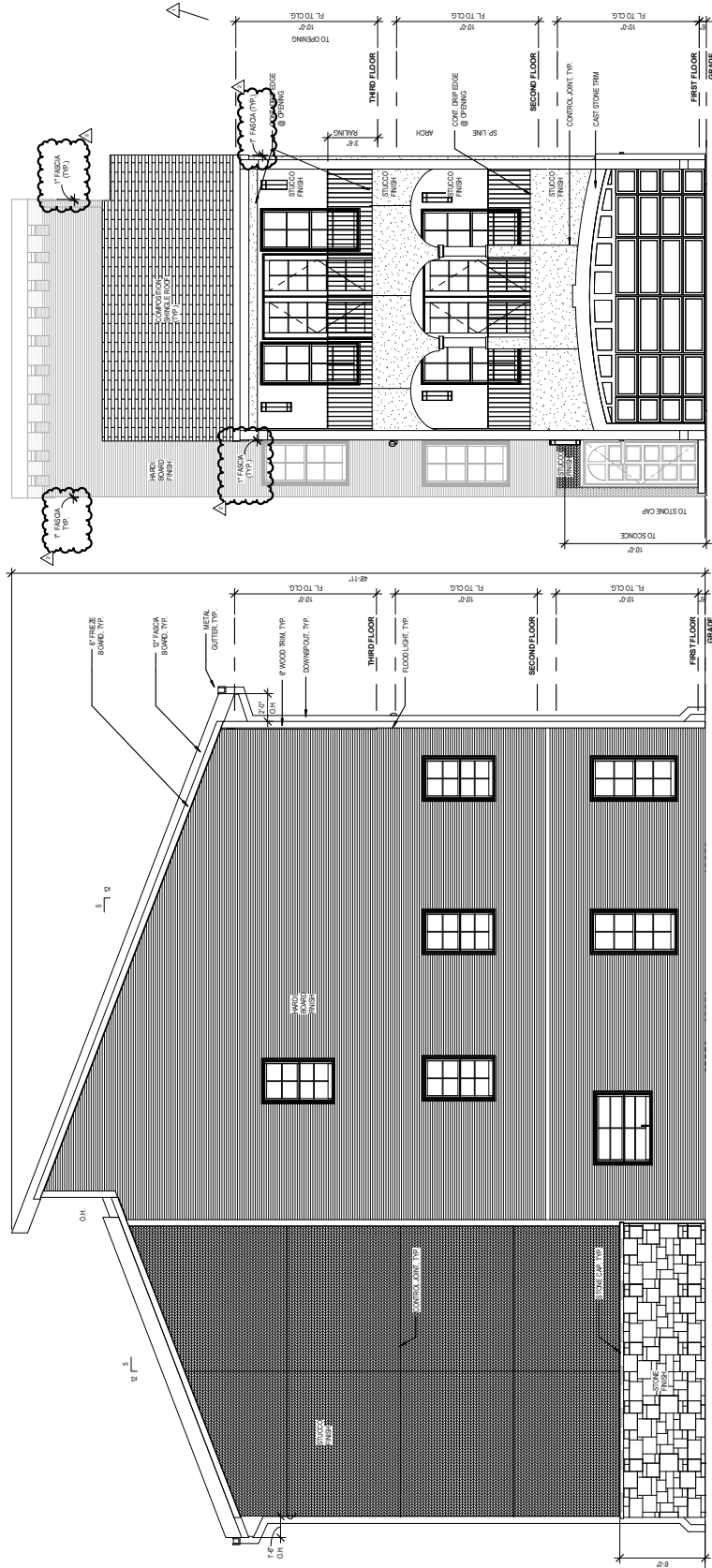
Project number 14037.00

Drawn by K.S.

Checked by B.E.

A400

Scale 1/4" = 1'-0"



1 FRONT ELEVATION - OPTION 1
1/4" = 1'-0"

2 RIGHT ELEVATION
1/4" = 1'-0"