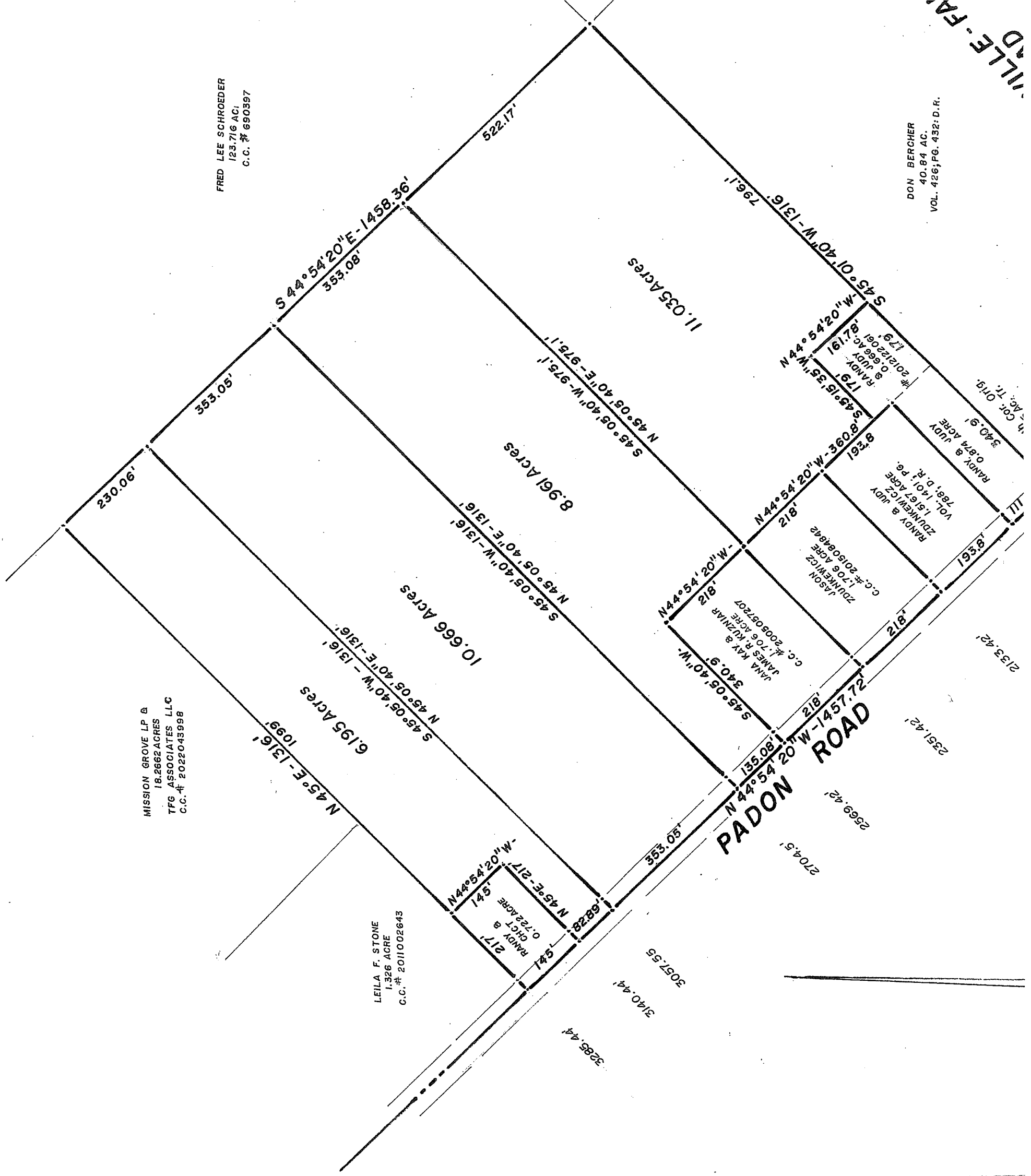


DON BERCHER
40.84 AC.
VOL. 426; PG. 432; D.R.

FRED LEE SCHROEDER
123.716 AC.
C.C. # 690397

MISSION GROVE LP &
18.2662 ACRES
TFG ASSOCIATES LLC
C.C. # 2022043998

LEILA F. STONE
1.326 ACRE
C.C. # 2011002843



230.06'

353.05'

S 44° 54' 20" E - 1458.36'
353.08'

522.17'

11.035 ACRES

796.1'

S 45° 01' 40" W - 1316'
S 44° 54' 20" W - 179'
RANDY & JUDY
C.C. # 201212061
179'
RANDY & JUDY
C.C. # 201212061
179'
RANDY & JUDY
C.C. # 201212061
179'

340.9'
RANDY & JUDY
C.C. # 201212061
179'

8.961 ACRES

N 45° 05' 40" W - 975.1'
N 44° 54' 20" W - 366.9'

340.9'
RANDY & JUDY
C.C. # 201212061
179'
RANDY & JUDY
C.C. # 201212061
179'
RANDY & JUDY
C.C. # 201212061
179'

10.666 ACRES

N 45° 05' 40" W - 1316'
N 44° 54' 20" W - 218'

JASON
ZUMWILTZ
C.C. # 201504942
1706 ACRE
RANDY & JUDY
VOL. 1401 PG.
ZUMWILTZ
VOL. 1401 PG.
RANDY & JUDY
C.C. # 201504942
1706 ACRE

2133.42'

6.195 ACRES

N 45° 05' 40" W - 1316'
N 44° 54' 20" W - 218'

JANA KAY & RIZVIAR
C.C. # 200807207
340.9'
N 45° 05' 40" W - 1316'

PADON ROAD
N 44° 54' 20" W - 1457.72'
218'

2351.42'

N 45° E - 1316'
1099'

N 44° 54' 20" W - 145'
N 45° E - 217'
RANDY & JUDY
C.C. # 2011002843
1.326 ACRE

3285.44'

3140.44'

2704.5'

2569.42'

2133.42'

3057.55'