



280 CRESTMONT STREET
POINT BLANK, TEXAS
1,336 SQ FT | 3 BEDROOMS | 2 BATHROOMS | 2 CAR GARAGE



280 CRESTMONT STREET



Beautifully remodeled, this waterfront home combines modern updates with the serenity of lake living. Set along a canal with a brand-new bulkhead, it offers sweeping views of Lake Livingston right from your backyard. Inside, you'll find a refreshed interior with granite countertops, custom cabinetry, durable laminate flooring, and fresh paint throughout. Practical upgrades include PEX piping, cement board siding for lasting durability, and a newer roof for added confidence. Whether you're relaxing by the water, entertaining friends, or enjoying a day on the lake, this move-in ready property is the perfect lakeside getaway.



Markham Realty
Selling Quality Texas Properties Since 1970
contact@markhamrealty.com
936-295-5989 | markhamrealty.com

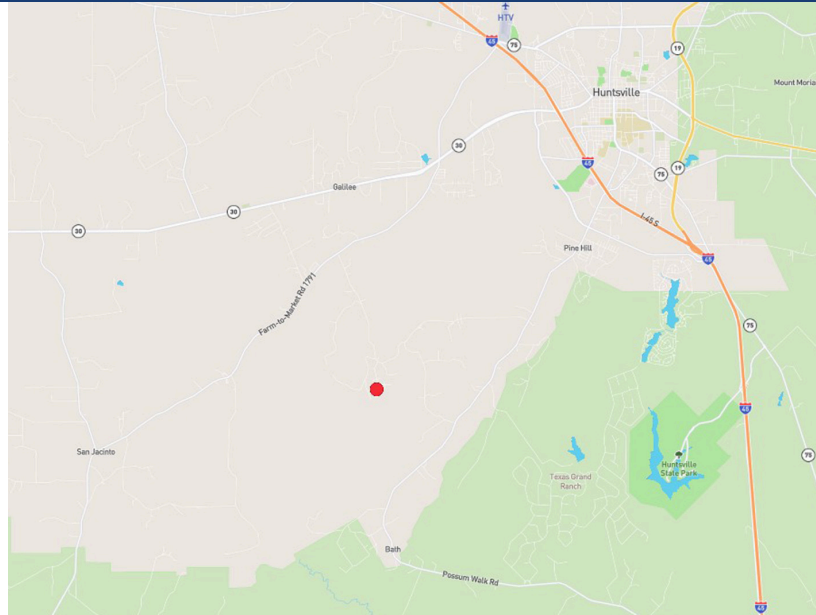
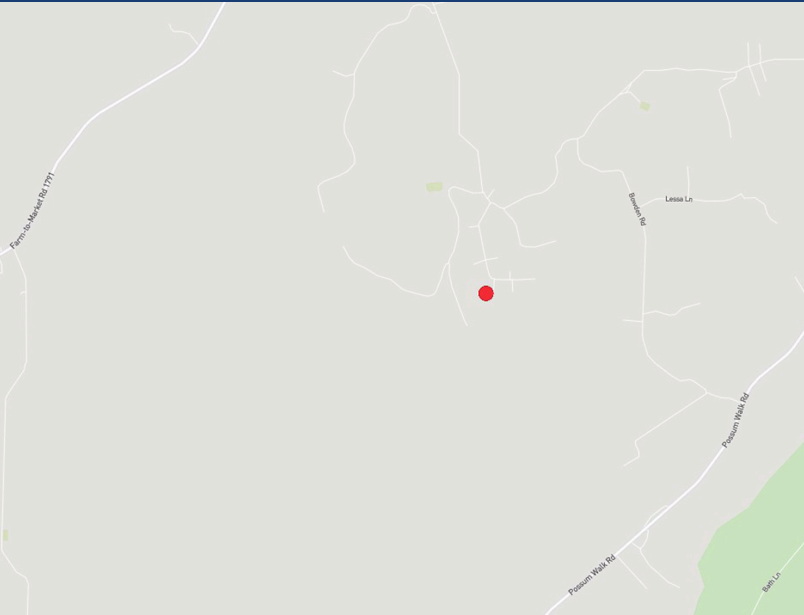


Scan here for additional information & photos.

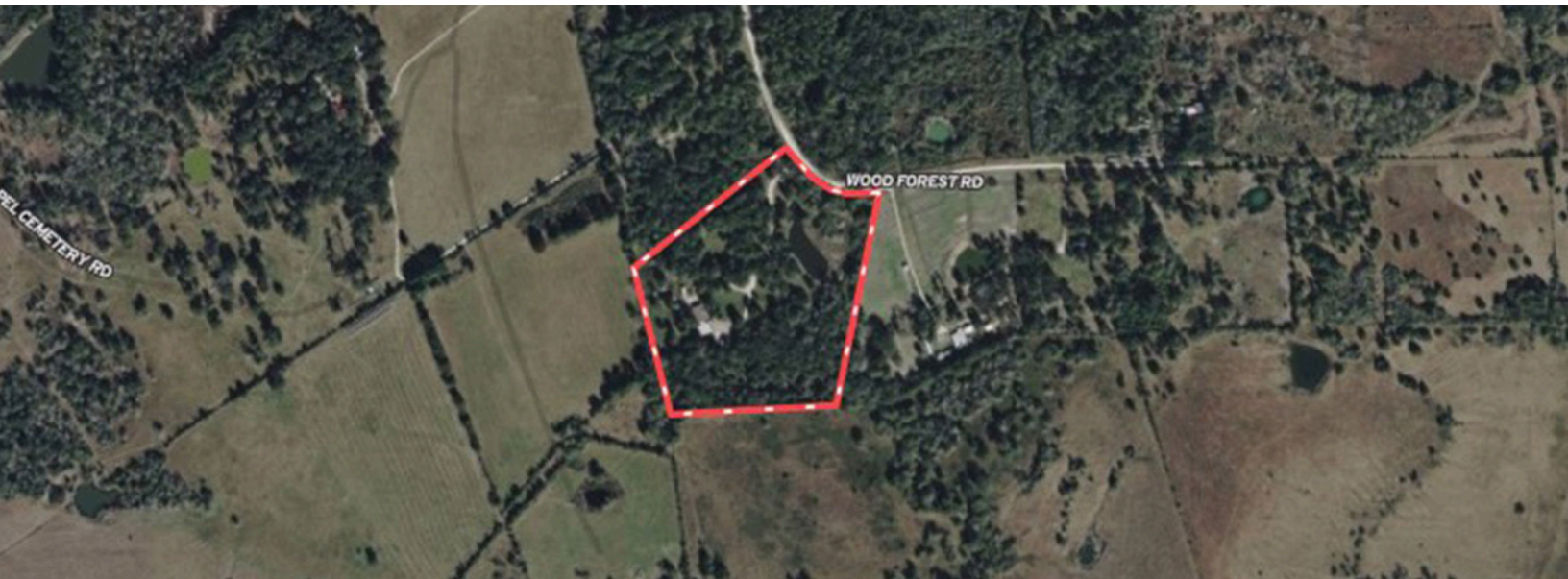


Information furnished is from sources deemed reliable, but is not guaranteed by Markham Realty, Inc. The offerings are subject to change in price, errors, omissions, prior sales, or withdrawal without notice. Square footage, acreage size and lot dimensions are approximate. All persons and firms named in this brochure are licensed brokers or salespersons. Markham Realty, Inc. will co-broker with any licensed Broker if Broker and/or agent accompanies his or her prospective buyer from the first (1st) showing forward.

280 CRESTMONT STREET POINT BLANK, TEXAS



Directions: Hwy 190 - Turn South on FM 980 - turn left on Point Lookout - Follow to Crestmont - House will be on the right.



Markham Realty
Selling Quality Texas Properties Since 1970
contact@markhamrealty.com
936-295-5989 | markhamrealty.com



Scan here for additional information & photos.



Information furnished is from sources deemed reliable, but is not guaranteed by Markham Realty, Inc. The offerings are subject to change in price, errors, omissions, prior sales, or withdrawal without notice. Square footage, acreage size and lot dimensions are approximate. All persons and firms named in this brochure are licensed brokers or salespersons. Markham Realty, Inc. will co-broker with any licensed Broker if Broker and/or agent accompanies his or her prospective buyer from the first (1st) showing forward.