



# Notable Features + Amenities

**2 Bedrooms | 2 Full & 1 Half Baths | 2 Assigned Parking Spaces | 3-Car Private Garage  
2,382 Unit Sq. Ft. (Per HCAD) | Built in 2024 (Per Builder)**

## Building Amenities

- Access to Thompson Hotel gym and pool
- Residents receive a 10% discount at Sol7 and Maven (restaurants in the attached hotel)
- Residents receive a 20% discount at the attached Thompson Hotel
- Residents can reserve a variety of rooms for entertainment and business purposes: poker room, party room, conference room, and lap pool
- Residents can access all amenities from the attached hotel at their own expense, such as room service and housekeeping
- Building has on site concierge and valet parking

## Miscellaneous Features

- 10' Ceilings throughout
- Private 3-car garage included with unit
  - Located in the 2nd floor of the parking garage
- All walls primed for custom paint selections
- Wired for high speed internet
- Sliding pocket doors to bathrooms and in bedrooms

## Kitchen – 19' x 12'

- Porcelain countertop and full quartz slab backsplash extending to ceiling
- Island with bar seating, stainless steel ULine beverage refrigerator, and built-in cabinet storage
- Stainless steel deep basin sink with stainless steel restaurant-style faucet with spray function
- Stainless steel Thermador cooktop with five gas burners and stainless steel Thermador vent hood
- Stainless steel Thermador microwave
- Stainless steel Thermador oven
- Stainless steel Thermador refrigerator and freezer with cabinet facade
- Stainless steel Thermador dishwasher with cabinet facade
- Custom built-in Pedini cabinetry with soft-close doors and integrated under-cabinet lighting and built-in pantry
- Recessed lighting
- 7" Engineered wood floors

## Dining Room – 16' x 10'

- Wiring for chandelier
- Storage closet
- Recessed lighting
- 5" Multi-piece baseboards
- 7" Engineered wood floors

## Living Room – 21' x 18'

- Panoramic floor-to-ceiling windows with recessed niche wired for motorized drupe installation
- Recessed lighting
- 5" Multi-piece baseboards
- 7" Engineered wood floors

## Sitting Room – 19' x 9'

- Panoramic floor-to-ceiling windows with recessed niche wired for motorized drupe installation
- Recessed lighting
- 5" Multi-piece baseboards
- 7" Engineered wood floors

## Primary Bedroom – 19' x 16'

- Panoramic floor-to-ceiling windows with recessed niche wired for motorized drupe installation
- Wiring for chandelier installation
- Recessed lighting
- 5" Multi-piece baseboards
- 7" Engineered wood floors

## Primary Bathroom – 16' x 11'

- Vanity with porcelain countertop with dual sinks and built-in cabinetry with soft-close doors and drawers
- Private lavatory closet
- Shower with glass door, floor-to-ceiling quartz paneling, standard shower head, hand sprayer, and overhead rainfall shower head
- Freestanding porcelain soaking tub with quartz backsplash
- Walk-in closet with empty space; built-to-suit – 9' x 8'
- Wiring for chandelier and wall sconce installation
- Oversized tile floors with tile baseboards

## Bedroom 2 – 18' x 14'

- Panoramic floor-to-ceiling windows with recessed niche wired for motorized drupe installation
- Wiring for chandelier installation
- Recessed lighting
- 5" Multi-piece baseboards
- 7" Engineered wood floors

## Bedroom 2 Bathroom – 11' x 8'

- Vanity with porcelain countertop with single sink and built-in cabinetry with soft-close doors and drawers
- Private lavatory closet
- Shower with glass door, floor-to-ceiling quartz paneling and standard shower head
- Walk-in closet with empty space; built-to-suit – 12' x 5'
- Wiring for chandelier and wall sconce installation
- Oversized tile floors with tile baseboards

## Powder Bath – 8' x 4'

- Porcelain pedestal sink with gooseneck faucet
- Porcelain commode
- Wall-mounted mirror
- Recessed lighting
- 5" Multi-piece baseboards
- 7" Engineered wood floors

## Utility Room – 4' x 2'6"

- Space for stacked washer/dryer with electric connections
- Tile floors

## Covered Patio – 14' x 8'

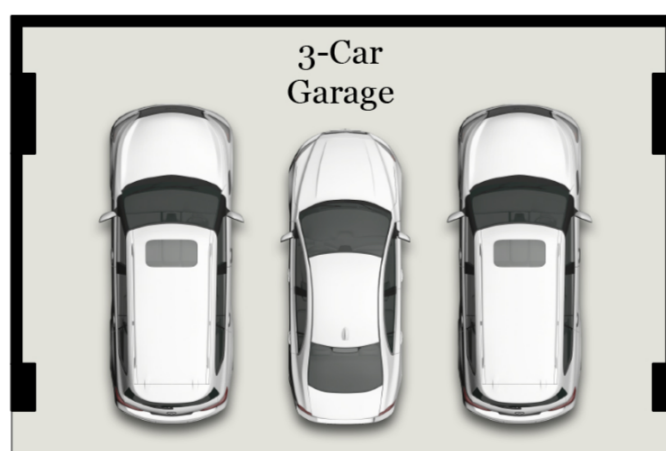
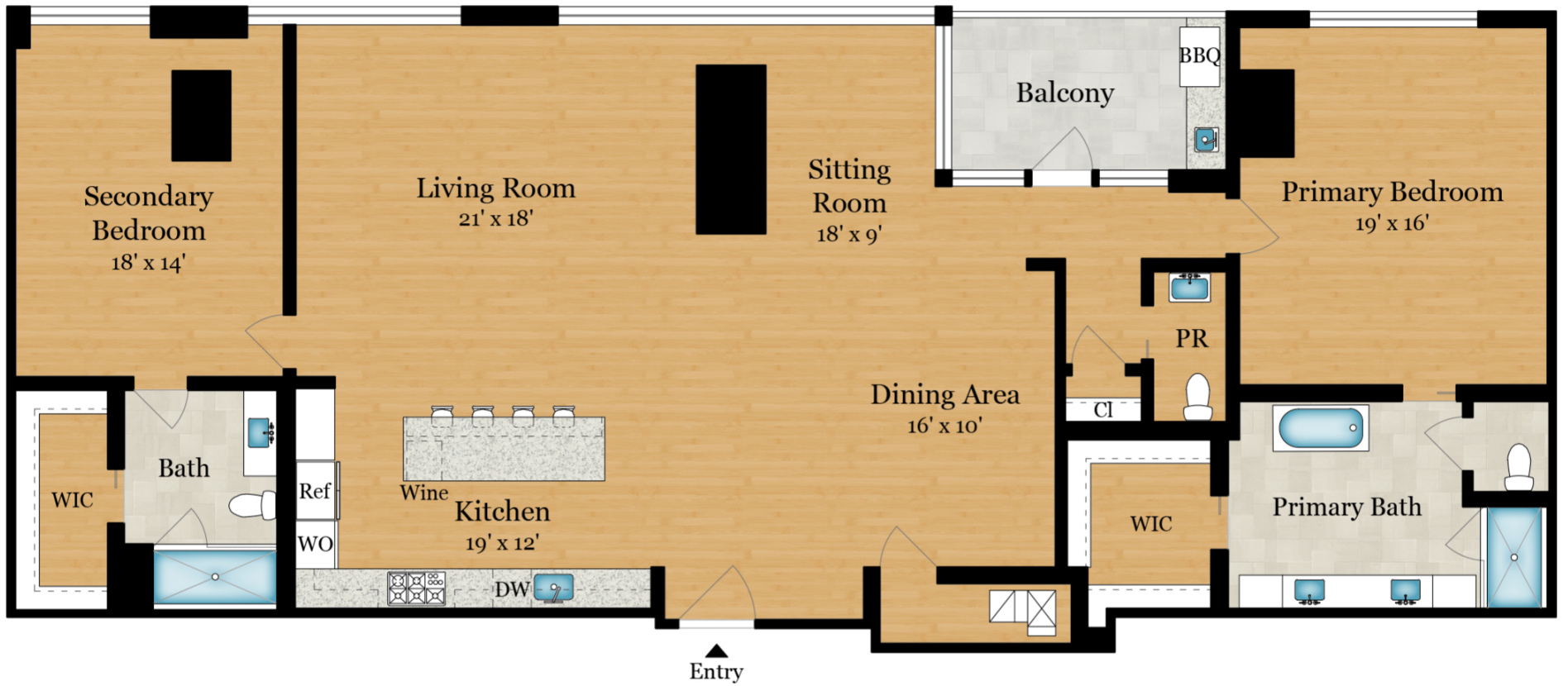
- Built-in cabinetry with quartz countertop, stainless steel sink with gooseneck faucet, stainless steel Coyote grill, and soft-close doors and drawers
- Wood paneled ceiling with recessed lighting
- Stained concrete floors



## Floor Plan

Total Square Footage: 2,443 Sq. Ft.

Ceiling Height: 10'-0"



The measurements in the drawings provided are approximate and should be independently verified.

